



CITY OF

**BEACH GROVE
INDIANA**

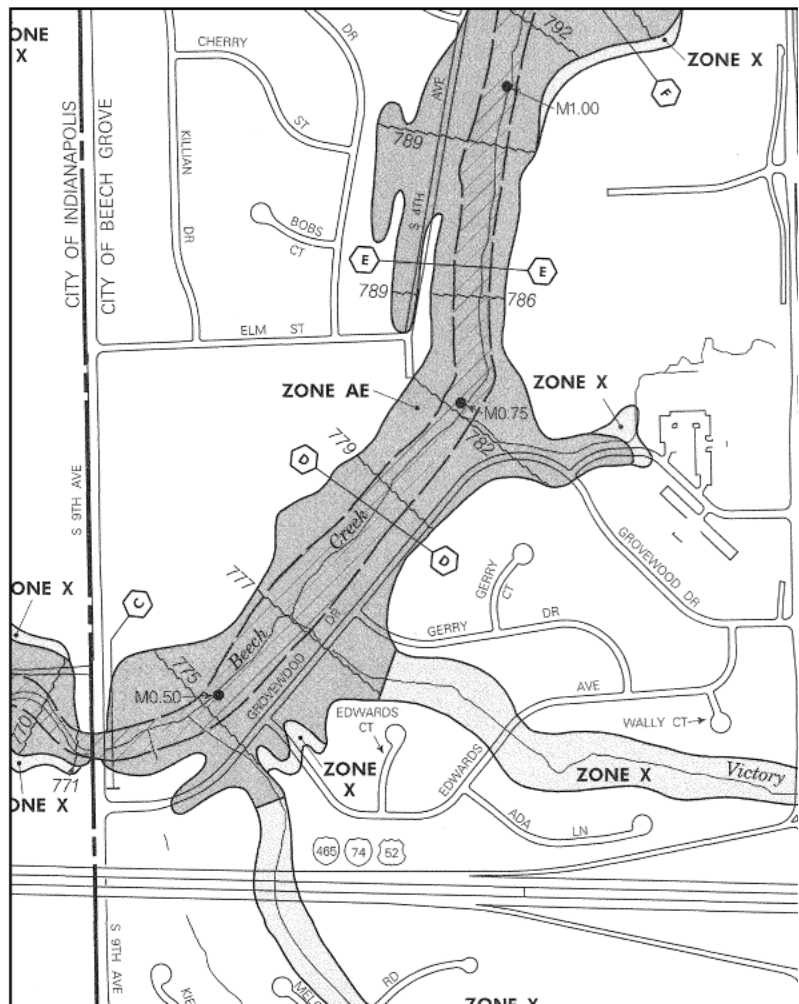
CASE STUDY

By Wessler Engineering

Background

A couple of Beech Grove residents, whose homes were situated on a hill, were paying for flood insurance, which can be costly. However, the flood waters from Beech Creek never reached the street in front of their homes. So, they contacted the mayor to find out why they were paying for flood insurance and to see if anything could be done. Recognizing the area affected may include more than the two homes in question, the City turned to Wessler Engineering to assist them in the process of updating the floodplain maps.

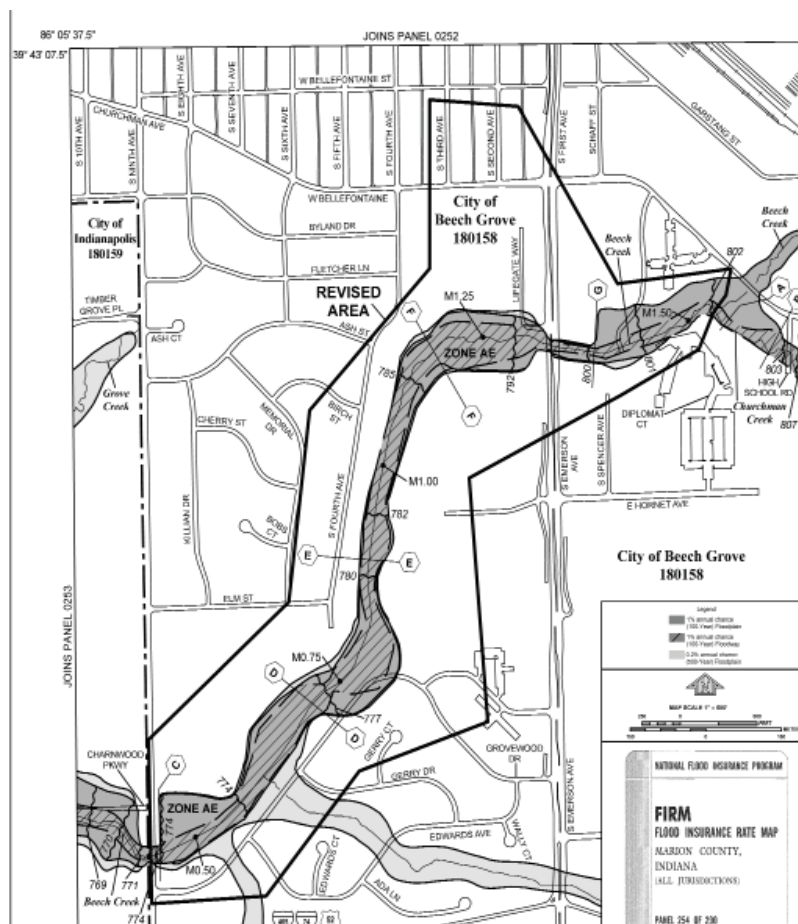
Many residents along Grovewood Drive between 9th Avenue and Emerson Avenue, and along South 4th Avenue between Elm and Ash Streets, were located in the flood zone of Beech Creek according to the Federal Emergency Management Agency's (FEMA) Flood Insurance Rate Maps (FIRMs). As a result, these homeowners were required to pay annual flood insurance premiums. Several residents had not experienced flood damage, while other residential properties had damage resulting from Beech Creek flooding.



Flood Insurance Rate Map - January 5, 2001

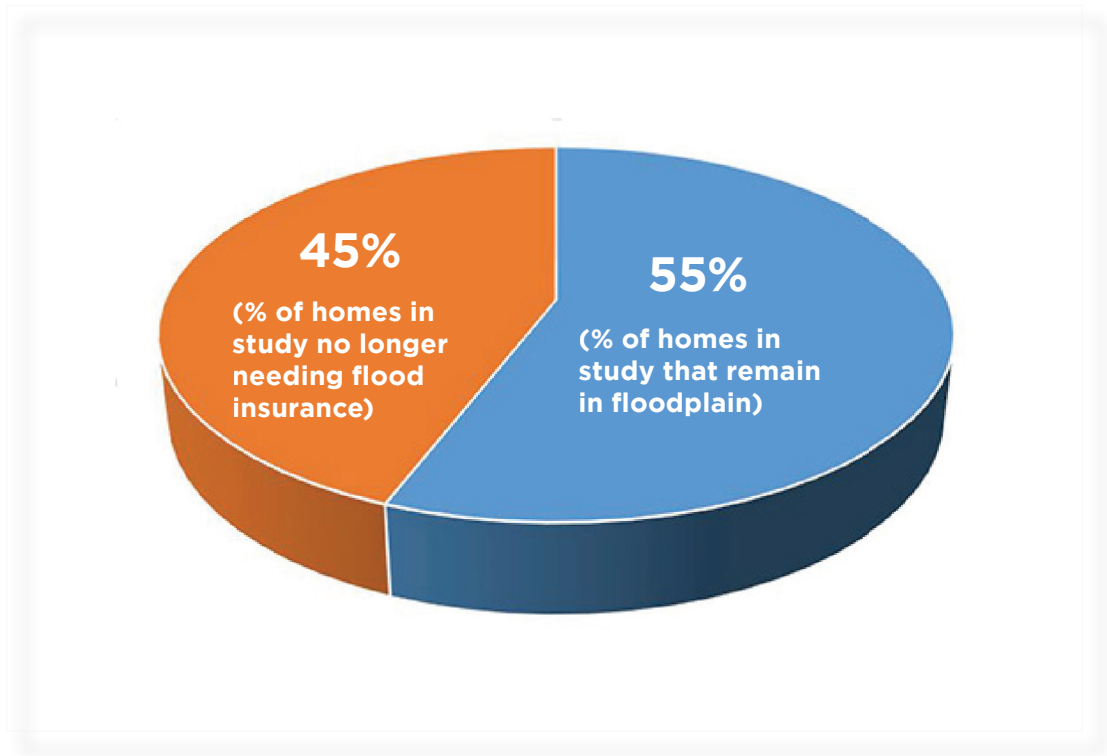
Actions

To check FIRM accuracy of floodplain limits along Beech Creek, Wessler completed field-surveyed cross sections and revised the existing Flood Insurance Study hydraulic model. It was found that FEMA's FIRMs were inaccurate and floodplain limits were actually narrower than shown on the existing FIRMs. The model and updated floodplain limits were submitted to the Indiana Department of Natural Resources (IDNR) for a Letter of Map Revision (LOMR). Wessler received LOMR approval notice from the IDNR and submitted the model and updated floodplain mapping to FEMA for final approval.



Flood Insurance Rate Map - February 10, 2012

Results



Approximately 150 residential homes were removed from the flood zone. “This allowed those Beech Grove residents to petition their insurance companies to remove the requirement to carry flood insurance. They no longer had to carry costly insurance for homes that historically had never flooded. This saved them thousands of dollars in insurance costs while increasing their property values at the same time”, said Brad Meriwether.

“I was satisfied the revised floodplain area removed homes that should not have been included in the first place. These families were so grateful to Wessler and the City of Beech Grove for all of the benefits the LOMR provided to them. It was a successful project on every level, and the people at Wessler were great to work with.

“It was a successful project on every level, and the people at Wessler were great to work with.”

**- Brad Meriwether,
City of Beech Grove**

Each Beech Grove resident whose home was removed from the flood zone received a document from Wessler Engineering verifying this change had occurred. “Many of the residents have placed this document with their homeowner documentation. This will come in handy when they are ready to sell their home as it demonstrates they have been removed from the flood zone, which will save the buyer money on insurance premiums”, said Mary Atkins, Project Manager, Wessler

Engineering. “The City of Beech Grove couldn’t have asked for better results”, said Brad.

Brad Meriwether is the Director of Public Works and the MS4 Operator for the City of Beech Grove. Brad is directly involved with the [Beech Grove] residents and works with residents who have stormwater/flooding concerns.

About Wessler

Wessler is an engineering firm dedicated to bringing our clients' vision to life. We strive to make our relationships
More than a Project™



WWW.WESSLERENGINEERING.COM

Wessler Engineering is headquartered in Indianapolis, Indiana with additional offices in Fort Wayne, Evansville, and West Lafayette. Our markets and services include:

- » *Wastewater Treatment*
- » *Wastewater Collection*
- » *Drinking Water Treatment*
- » *Drinking Water Distribution*
- » *Stormwater*
- » *Environmental Services*
- » *Transportation*
- » *Electrical*
- » *Field Services*
- » *Construction Services*
- » *Airports*
- » *Industrial*

About the Author



EDUCATION

Purdue University
B.S., Environmental Engineering,
B.S., Forestry &
Natural Resources

REGISTRATIONS

Registered Professional Engineer,
Indiana

CERTIFICATIONS

Certified Professional in Erosion
and Sediment Control (CPESC)

Leadership in Energy and
Environmental Design Accredited
Professional (LEED AP)

National Environmental Policy Act
(NEPA) Training Certification and
Categorical Exclusion Training

Mary K. Atkins, P.E., C.P.E.S.C., LEED AP, is the head of the Environmental Services Group and project manager with more than ten years of professional experience on environmental planning and permitting projects. Mary is responsible for the planning, scheduling, and technical quality control/quality assurance of our environmental projects and is experienced in DNR construction in a floodway permitting; stormwater pollution prevention planning; stormwater utility formation; wellhead protection planning; erosion and sediment control planning and permitting; IDEM and Army Corps water quality permitting; post-construction stormwater quality; NPDES permitting for industrial activities exposed to storm water runoff; Phase II NPDES permitting for Municipal Separate Storm Sewer Systems; Spill Prevention Control and Countermeasures planning; environmental impact evaluations; industrial pretreatment programming and wetland delineations.

INSIDER'S SCOOP:

After graduating from Purdue, Mary's first job interview was with Wessler. She was offered the job and has been with Wessler for more than a decade.



6219 South East Street
Indianapolis, IN 46227

(317) 788-4551
MaryA@wesslerengineering.com

WWW.WESSLERENGINEERING.COM