

Medicare Eligibility Navigator

for Permobil Seating & Positioning Products

permobil

At a glance:

HCPCS Code descriptions and qualifying Seating & Positioning Products

The convenient way to arrive at the correct HCPCS codes—
based on the individual's needs and diagnoses.

Cushions

HPCPS	Description	Qualifying Permobil Products
E2601	General use wheelchair seat cushion, width less than 22 inches, any depth	ROHO® MOSAIC® Cushion (E2601 only), Comfort ELEMENTS® Cushion, Comfort Curve Cushion, Comfort Support Pro 7 Series Cushion (E2602 only)
E2602	General use wheelchair seat cushion, width 22 inches or greater, any depth	
E2603	Skin protection and positioning wheelchair seat cushion, width less than 22 inches, any depth	Comfort Ascent Cushion
E2604	Skin protection and positioning wheelchair seat cushion, width 22 inches or greater, any depth	
E2605	Positioning wheelchair seat cushion, width less than 22 inches, any depth	ROHO® AirLITE® Cushion (E2605 only)
E2606	Positioning wheelchair seat cushion, width 22 inches or greater, any depth	
E2607	Skin protection and positioning wheelchair seat cushion, width less than 22 inches, any depth	Comfort M2 Cushion, Comfort ACTA-EMBRACE® Cushion, Comfort Saddle Cushion, Comfort Saddle 7 Series Cushion (E2608 only)
E2608	Skin protection and positioning wheelchair seat cushion, width 22 inches or greater, any depth	
E2609	Custom fabricated wheelchair seat cushion, any size	ROHO® Custom Cushion, Comfort Custom Inception Cushion
E2622	Skin protection wheelchair seat cushion, adjustable, width less than 22 inches, any depth	ROHO® HIGH PROFILE®, MID PROFILE™, or LOW PROFILE® Single Compartment Cushion, ROHO® HIGH PROFILE® Sensor Ready™ or ROHO® MID PROFILE™ Sensor Ready™ Single Compartment Cushion, ROHO® Hybrid Elite® Cushion, ROHO® nexus SPIRIT® Cushion (E2622 only), Vicair® Adjuster O2
E2623	Skin protection wheelchair seat cushion, adjustable, width 22 inches or greater, any depth	
E2624	Skin protection and positioning wheelchair seat cushion, width less than 22 inches, any depth	ROHO® QUADTRO SELECT® HIGH PROFILE®, MID PROFILE™ or LOW PROFILE® Cushion, ROHO® CONTOUR SELECT® Cushion, ROHO® ENHANCER® Cushion, ROHO® HIGH PROFILE® or LOW PROFILE® Dual Compartment Cushion, ROHO® Hybrid Select (E2624 only), Comfort ACTA-EMBRACE® Cushion with ATI, Comfort M2 Cushion with ATI, Vicair® Vector O2, Vicair® Active O2
E2625	Skin protection and positioning wheelchair seat cushion, width 22 inches or greater, any depth	

Backs

HCPCS	Description	Qualifying Permobil Products
E2611	General use wheelchair back cushion, width less than 22 inches, any height, including any type mounting hardware.	ROHO® AGILITY® Back Support (foam only) (E2611 only), ELEMENTS® Back Support, Visco Back Support
E2612	General use wheelchair back cushion, width 22 inches or greater, any height, including any type mounting hardware.	
E2613	Positioning wheelchair back cushion, posterior, width less than 22 inches, any height, including any type mounting hardware.	ROHO® AGILITY® Back Support (foam + lumbar) (E2613 only), ACTA-BACK® Back Support, ACTA-EMBRACE® Back Support, INCREDIBACK® Back Support, INCREDIBACK® Deep Back Support
E2614	Positioning wheelchair back cushion, posterior, width 22 inches or greater, any height, including any type mounting hardware.	
E2615	Positioning wheelchair back cushion, posterior, width less than 22 inches, any height, including any type mounting hardware.	ROHO® AGILITY® Back Support (foam with air insert + lumbar) (E2615 only), ACTA-BACK® Deep Back Support, ACTA--Relief Back Support (E2615 only)
E2616	Positioning wheelchair back cushion, posterior, width 22 inches or greater, any height, including any type mounting hardware.	
E2617	Custom fabricated wheelchair back cushion, any size, including any type mounting hardware.	ROHO® Custom Back, ROHO® Custom AGILITY® Back, Custom ACTA-BACK® Back Support, Custom ACTA-BACK® Deep Back Support, Custom ACTA-EMBRACE® Back Support, Custom ACTA-Relief Back Support
E2620	Positioning wheelchair back cushion, posterior, width less than 22 inches, any height, including any type mounting hardware.	ROHO® AGILITY® Back Support (foam with air insert) (E2620 only), ACTA-BACK® Contour Back Support, ACTA-BACK® LTS Back Support, Acta-Relief LTS Back Support, ACTA-EMBRACE® LTS Back Support
E2621	Positioning wheelchair back cushion, posterior, width 22 inches or greater, any height, including any type mounting hardware.	

Accessories

HCPCS	Description	Qualifying Permobil Products
K0019	Arm pad, replacement only	Arm Pad Replacement
K0108	Wheelchair component or accessory, not otherwise specified	Lateral Rolls
E0950	Wheelchair accessory, tray	Durasoft Full Lap Tray, Durasoft Half Lap Tray
E0953	Wheelchair accessory, lateral thigh or knee support, any type including fixed mounting hardware	BodiLink® Lateral Pelvic/Thigh Support Pads
E0954	Wheelchair accessory, foot box, any type, includes attachment and mounting hardware	Comfort Foot Single, Comfort Foot Double (x2)
E0955	Wheelchair accessory, headrest, cushioned, any type, including fixed mounting hardware	BodiLink® Head Support Pads
E0956	Wheelchair accessory, lateral trunk or hip support, any type, including fixed mounting hardware	BodiLink® Lateral Trunk Support Pads
E0957	Wheelchair accessory, medial thigh support, any type, including fixed mounting hardware	BodiLink® Medial Knee/Thigh Support Pads
E0960	Wheelchair accessory, shoulder harness/straps or chest strap, including any type mounting hardware	Body Point Chest Hardware
E0978	Wheelchair accessory, positioning belt/safety belt/pelvic strap	Body Point Hip Belt
E0992	Manual wheelchair accessory, solid seat insert	Rigid Insert
E0995	Wheelchair accessory, calf rest/pad, replacement only	Calf Pad
E1020	Residual limb support system for wheelchair	Quick Release Amputee, Swing-Away Amputee, TB3 Amputee
E1028	Wheelchair accessory, manual swingaway, retractable or removable mounting hardware for joystick, other control interface or positioning accessory	BodiLink® Head Support Removable Hardware, BodiLink® Lateral Trunk Support Swing-Away Hardware, BodiLink® Lateral Pelvic/Thigh Support Removable Hardware, BodiLink® Medial Knee/Thigh Support Swing-Away Hardware, EAD Hardware
E1399	Durable medical equipment, miscellaneous	Gait Belt
E2209	Accessory, arm trough, with or without hang support	Arm Support—TB3, Molded Arm, COMFORT ARM® Support
E2231	Solid seat support base	Removable Solid Seat Pan

Let's get started:

Need to find the right Seating &
Positioning product for the diagnosis?

Does the individual have a wheelchair and meet Medicare coverage criteria for it?

NO

Not covered by Medicare, other funding options may be available.

YES

Does the individual have any diagnosis which may pertain to skin protection and/or positioning?

NO

Turn to page 7
for **General Use** Permobil Wheelchair Cushions and Backs.

YES

Turn to page 9
for **Adjustable Skin Protection** Permobil Wheelchair Cushions and their qualifying ICD-10 Diagnosis Codes.

Turn to page 14
for **Positioning** Permobil Wheelchair Cushions and Backs and their qualifying ICD-10 Diagnosis Codes.

Turn to page 22
for **Skin Protection and Positioning** Permobil Wheelchair Cushions and Backs and their qualifying ICD-10 Diagnosis Codes.

Turn to page 32
for **Custom** Permobil Wheelchair Cushions and Backs and their qualifying conditions.

Turn to page 39
for Permobil **Accessories** and their qualifying conditions.

General Use Products

HCPCS Codes

E2601

General use wheelchair seat cushion, width *less than* 22 inches, any depth.

E2602

General use wheelchair seat cushion, width 22 inches *or greater*, any depth.

E2611

General use wheelchair back cushion, width *less than* 22 inches, any height, including any type mounting hardware.

E2612

General use wheelchair back cushion, width 22 inches *or greater*, any height, including any type mounting hardware.



ROHO® MOSAIC® Cushion
(E2601)



Comfort ELEMENTS® Cushion
(E2601, E2602)



Comfort Curve Cushion
(E2601, E2602)



Comfort Support Pro 7
Series Cushion
(E2602)

Qualifying HCPCS Conditions

A general use seat cushion (E2601) and a general use wheelchair back cushion (E2611-E2612) is covered for a beneficiary who has a manual wheelchair or a power wheelchair with a sling/solid seat/back which meets Medicare coverage criteria. If the beneficiary does not have a covered wheelchair, then the cushion will be denied as not reasonable and necessary. If the beneficiary has a POV or a power wheelchair with a captain's chair seat, the cushion will be denied as not reasonable and necessary.

For beneficiaries who meet coverage criteria for a power wheelchair and who do not have special skin protection or positioning needs, a power wheelchair with Captain's Chair provides appropriate support. Therefore, if a general use cushion is provided with a power wheelchair with a sling/solid seat/back instead of Captain's Chair, the wheelchair and the cushion(s) will be covered if EITHER criterion 1 or criterion 2 is met:

1. The cushion is provided with a covered power wheelchair base that is not available in a Captain's Chair model – i.e., codes K0839, K0840, K0843, K0860 – K0864, K0870, K0871, K0879, K0880, K0886, K0890, K0891; or
2. A skin protection and/or positioning seat or back cushion that meets coverage criteria is provided.

If one of these criteria is not met, both the power wheelchair with a sling/solid seat and the general use cushion will be denied as not reasonable and necessary.

If the beneficiary has a POV or a power wheelchair with a captain's chair seat, a separate seat and/or back cushion will be denied as not reasonable and necessary.



ROHO® AGILITY® Back Support
(Foam only)
(E2611)



Comfort ELEMENTS®
Back Support
(E2611, E2612)



Comfort Visco Back Support
(E2611, E2612)



ROHO® AGILITY® Active
Aluminum Back Support
(Foam only)
(E2611)

Adjustable Skin Protection

The presence of an ICD-10 code listed in this section is not sufficient by itself to assure coverage. Refer to the section on Coverage Indications, Limitation and/or Medical Necessity for other coverage criteria and payment information.

HCPCS Codes

E2622

Skin protection wheelchair seat cushion, adjustable, width *less than* 22 inches, any depth.

E2623

Skin protection wheelchair seat cushion, adjustable, width 22 inches *or greater*, any depth.



ROHO® HIGH PROFILE® Single Compartment Cushion (E2622, E2623)



ROHO® MID PROFILE™ Single Compartment Cushion (E2622, E2623)



ROHO® LOW PROFILE® Single Compartment Cushion (E2622, E2623)



ROHO® MID PROFILE™ Sensor Ready™ Single Compartment Cushion (E2622, E2623)



ROHO® HIGH PROFILE® Sensor Ready™ Single Compartment Cushion (E2622, E2623)



Vicair® Adjuster O2 Cushion (E2622, E2623)

Qualifying ICD-10 Diagnosis Conditions and Codes

A skin protection seat cushion (E2622, E2623) is covered for a beneficiary who meets the following criteria:

1. The beneficiary has a manual wheelchair or a power wheelchair with a sling/solid seat/back and the beneficiary meets Medicare coverage criteria for it; AND
2. The beneficiary has EITHER of the following:
 - a. Current pressure ulcer or past history of a pressure ulcer (see diagnosis codes that support medical necessity section below) on the area of contact with the seating surface; OR
 - b. Absent or impaired sensation in the area of contact with the seating surface or inability to carry out a functional weight shift due to one of the following diagnoses: spinal cord injury resulting in quadriplegia or paraplegia, other spinal cord disease, multiple sclerosis, other demyelinating disease, cerebral palsy, anterior horn cell diseases including amyotrophic lateral sclerosis, post polio paralysis, traumatic brain injury resulting in quadriplegia, spina bifida, childhood cerebral degeneration, Alzheimer's disease, Parkinson's disease, muscular dystrophy, hemiplegia, Huntington's chorea, idiopathic torsion dystonia, athetoid cerebral palsy, arthrogryposis, osteogenesis imperfecta, spinocerebellar disease or transverse myelitis (see diagnosis codes that support medical necessity section on the next page).



ROHO® nexus SPIRIT® Cushion
(E2622)



ROHO® Hybrid Elite® Cushion
(E2622, E2623)

Diagnosis Codes

B91	Sequelae of poliomyelitis	G36.0	Neuromyelitis optica [Devic]
E75.00	GM2 gangliosidosis, unspecified	G36.1	Acute and subacute hemorrhagic leukoencephalitis [Hurst]
E75.01	Sandhoff disease	G36.8	Other specified acute disseminated demyelination
E75.02	Tay-Sachs disease	G36.9	Acute disseminated demyelination, unspecified
E75.09	Other GM2 gangliosidosis	G37.0	Diffuse sclerosis of central nervous system
E75.10	Unspecified gangliosidosis	G37.1	Central demyelination of corpus callosum
E75.11	Mucopolidosis IV	G37.2	Central pontine myelinolysis
E75.19	Other gangliosidosis	G37.3	Acute transverse myelitis in demyelinating disease of central nervous system
E75.23	Krabbe disease	G37.4	Subacute necrotizing myelitis of central nervous system
E75.25	Metachromatic leukodystrophy	G37.5	Concentric sclerosis [Balo] of central nervous system
E75.29	Other sphingolipidosis	G37.8	Other specified demyelinating diseases of central nervous system
E75.4	Neuronal ceroid lipofuscinosis	G37.9	Demyelinating disease of central nervous system, unspecified
F84.2	Rett's syndrome	G61.0	Guillain-Barre Syndrome
G04.1	Tropical spastic paraplegia	G71.00	Muscular dystrophy
G04.89	Other myelitis	G71.01	Duchenne or Becker muscular dystrophy
G10	Huntington's disease	G71.02	Facioscapulohumeral muscular dystrophy
G11.0	Congenital nonprogressive ataxia	G71.09	Other specified muscular dystrophies
G11.1	Early-onset cerebellar ataxia	G71.11	Myotonic muscular dystrophy
G11.2	Late-onset cerebellar ataxia	G71.2	Congenital myopathies
G11.3	Cerebellar ataxia with defective DNA repair	G80.0	Spastic quadriplegic cerebral palsy
G11.4	Hereditary spastic paraplegia	G80.1	Spastic diplegic cerebral palsy
G11.8	Other hereditary ataxias	G80.2	Spastic hemiplegic cerebral palsy
G11.9	Hereditary ataxia, unspecified	G80.3	Athetoid cerebral palsy
G12.0	Infantile spinal muscular atrophy, type I [Werdnig-Hoffman]	G80.4	Ataxic cerebral palsy
G12.1	Other inherited spinal muscular atrophy	G80.8	Other cerebral palsy
G12.20	Motor neuron disease, unspecified	G80.9	Cerebral palsy, unspecified
G12.21	Amyotrophic lateral sclerosis	G81.00	Flaccid hemiplegia affecting unspecified side
G12.23	Primary lateral sclerosis	G81.01	Flaccid hemiplegia affecting right dominant side
G12.24	Familial motor neuron disease	G81.02	Flaccid hemiplegia affecting left dominant side
G12.25	Progressive spinal muscle atrophy	G81.03	Flaccid hemiplegia affecting right nondominant side
G12.29	Other motor neuron disease	G81.04	Flaccid hemiplegia affecting left nondominant side
G12.8	Other spinal muscular atrophies and related syndromes	G81.10	Spastic hemiplegia affecting unspecified side
G12.9	Spinal muscular atrophy, unspecified	G81.11	Spastic hemiplegia affecting right dominant side
G14	Postpolio syndrome	G81.12	Spastic hemiplegia affecting left dominant side
G20	Parkinson's disease	G81.13	Spastic hemiplegia affecting right nondominant side
G21.4	Vascular parkinsonism	G81.14	Spastic hemiplegia affecting left nondominant side
G24.1	Genetic torsion dystonia	G81.90	Hemiplegia, unspecified affecting unspecified side
G30.0	Alzheimer's disease with early onset		
G30.1	Alzheimer's disease with late onset		
G30.8	Other Alzheimer's disease		
G30.9	Alzheimer's disease, unspecified		
G31.81	Alpers disease		
G31.82	Leigh's disease		
G32.0	Subacute combined degeneration of spinal cord in diseases classified elsewhere		
G32.81	Cerebellar ataxia in diseases classified elsewhere		
G32.89	Other specified degenerative disorders of nervous system in diseases classified elsewhere		
G35	Multiple sclerosis		

G81.91	Hemiplegia, unspecified affecting right dominant side	I69.252	Hemiplegia and hemiparesis following other nontraumatic intracranial hemorrhage affecting left dominant side
G81.92	Hemiplegia, unspecified affecting left dominant side	I69.253	Hemiplegia and hemiparesis following other nontraumatic intracranial hemorrhage affecting right non-dominant side
G81.93	Hemiplegia, unspecified affecting right nondominant side	I69.254	Hemiplegia and hemiparesis following other nontraumatic intracranial hemorrhage affecting left non-dominant side
G81.94	Hemiplegia, unspecified affecting left nondominant side	I69.259	Hemiplegia and hemiparesis following other nontraumatic intracranial hemorrhage affecting unspecified side
G82.20	Paraplegia, unspecified	I69.351	Hemiplegia and hemiparesis following cerebral infarction affecting right dominant side
G82.21	Paraplegia, complete	I69.352	Hemiplegia and hemiparesis following cerebral infarction affecting left dominant side
G82.22	Paraplegia, incomplete	I69.353	Hemiplegia and hemiparesis following cerebral infarction affecting right non-dominant side
G82.50	Quadriplegia, unspecified	I69.354	Hemiplegia and hemiparesis following cerebral infarction affecting left non-dominant side
G82.51	Quadriplegia, C1-C4 complete	I69.359	Hemiplegia and hemiparesis following cerebral infarction affecting unspecified side
G82.52	Quadriplegia, C1-C4 incomplete	I69.851	Hemiplegia and hemiparesis following other cerebrovascular disease affecting right dominant side
G82.53	Quadriplegia, C5-C7 complete	I69.852	Hemiplegia and hemiparesis following other cerebrovascular disease affecting left dominant side
G82.54	Quadriplegia, C5-C7 incomplete	I69.853	Hemiplegia and hemiparesis following other cerebrovascular disease affecting right non-dominant side
G93.89	Other specified disorders of brain	I69.854	Hemiplegia and hemiparesis following other cerebrovascular disease affecting left non-dominant side
G93.9	Disorder of brain, unspecified	I69.859	Hemiplegia and hemiparesis following other cerebrovascular disease affecting unspecified side
G94	Other disorders of brain in diseases classified elsewhere	I69.951	Hemiplegia and hemiparesis following unspecified cerebrovascular disease affecting right dominant side
G95.0	Syringomyelia and syringobulbia	I69.952	Hemiplegia and hemiparesis following unspecified cerebrovascular disease affecting left dominant side
G95.11	Acute infarction of spinal cord (embolic) (nonembolic)	I69.953	Hemiplegia and hemiparesis following unspecified cerebrovascular disease affecting right nondominant side
G95.19	Other vascular myelopathies	I69.954	Hemiplegia and hemiparesis following unspecified cerebrovascular disease affecting left nondominant side
G99.2	Myelopathy in diseases classified elsewhere	I69.959	Hemiplegia and hemiparesis following unspecified cerebrovascular disease affecting unspecified side
I69.051	Hemiplegia and hemiparesis following nontraumatic subarachnoid hemorrhage affecting right dominant side	L89.130	Pressure ulcer of right lower back, unstageable
I69.052	Hemiplegia and hemiparesis following nontraumatic subarachnoid hemorrhage affecting left dominant side	L89.131	Pressure ulcer of right lower back, stage 1
I69.053	Hemiplegia and hemiparesis following nontraumatic subarachnoid hemorrhage affecting right nondominant side	L89.132	Pressure ulcer of right lower back, stage 2
I69.054	Hemiplegia and hemiparesis following nontraumatic subarachnoid hemorrhage affecting left nondominant side	L89.133	Pressure ulcer of right lower back, stage 3
I69.059	Hemiplegia and hemiparesis following nontraumatic subarachnoid hemorrhage affecting unspecified side	L89.134	Pressure ulcer of right lower back, stage 4
I69.151	Hemiplegia and hemiparesis following nontraumatic intracerebral hemorrhage affecting right dominant side	L89.140	Pressure ulcer of left lower back, unstageable
I69.152	Hemiplegia and hemiparesis following nontraumatic intracerebral hemorrhage affecting left dominant side	L89.141	Pressure ulcer of left lower back, stage 1
I69.153	Hemiplegia and hemiparesis following nontraumatic intracerebral hemorrhage affecting right nondominant side	L89.142	Pressure ulcer of left lower back, stage 2
I69.154	Hemiplegia and hemiparesis following nontraumatic intracerebral hemorrhage affecting left nondominant side	L89.143	Pressure ulcer of left lower back, stage 3
I69.159	Hemiplegia and hemiparesis following nontraumatic intracerebral hemorrhage affecting unspecified side		
I69.251	Hemiplegia and hemiparesis following other nontraumatic intracranial hemorrhage affecting right dominant side		

L89.144	Pressure ulcer of left lower back, stage 4	Q05.4	Unspecified spina bifida with hydrocephalus
L89.150	Pressure ulcer of sacral region, unstageable	Q05.5	Cervical spina bifida without hydrocephalus
L89.151	Pressure ulcer of sacral region, stage 1	Q05.6	Thoracic spina bifida without hydrocephalus
L89.152	Pressure ulcer of sacral region, stage 2	Q05.7	Lumbar spina bifida without hydrocephalus
L89.153	Pressure ulcer of sacral region, stage 3	Q05.8	Sacral spina bifida without hydrocephalus
L89.154	Pressure ulcer of sacral region, stage 4	Q05.9	Spina bifida, unspecified
L89.200	Pressure ulcer of unspecified hip, unstageable	Q07.00	Arnold-Chiari syndrome without spina bifida or hydrocephalus
L89.201	Pressure ulcer of unspecified hip, stage 1	Q07.01	Arnold-Chiari syndrome with spina bifida
L89.202	Pressure ulcer of unspecified hip, stage 2	Q07.02	Arnold-Chiari syndrome with hydrocephalus
L89.203	Pressure ulcer of unspecified hip, stage 3	Q07.03	Arnold-Chiari syndrome with spina bifida and hydrocephalus
L89.204	Pressure ulcer of unspecified hip, stage 4	Q67.8	Other congenital deformities of chest
L89.210	Pressure ulcer of right hip, unstageable	Q68.1	Congenital deformity of finger(s) and hand
L89.211	Pressure ulcer of right hip, stage 1	Q74.3	Arthrogryposis multiplex congenita
L89.212	Pressure ulcer of right hip, stage 2	Q78.0	Osteogenesis imperfecta
L89.213	Pressure ulcer of right hip, stage 3		
L89.214	Pressure ulcer of right hip, stage 4		
L89.220	Pressure ulcer of left hip, unstageable		
L89.221	Pressure ulcer of left hip, stage 1		
L89.222	Pressure ulcer of left hip, stage 2		
L89.223	Pressure ulcer of left hip, stage 3		
L89.224	Pressure ulcer of left hip, stage 4		
L89.300	Pressure ulcer of unspecified buttock unstageable		
L89.301	Pressure ulcer of unspecified buttock, stage 1		
L89.302	Pressure ulcer of unspecified buttock, stage 2		
L89.303	Pressure ulcer of unspecified buttock, stage 3		
L89.304	Pressure ulcer of unspecified buttock, stage 4		
L89.310	Pressure ulcer of right buttock, unstageable		
L89.311	Pressure ulcer of right buttock, stage 1		
L89.312	Pressure ulcer of right buttock, stage 2		
L89.313	Pressure ulcer of right buttock, stage 3		
L89.314	Pressure ulcer of right buttock, stage 4		
L89.320	Pressure ulcer of left buttock, unstageable		
L89.321	Pressure ulcer of left buttock, stage 1		
L89.322	Pressure ulcer of left buttock, stage 2		
L89.323	Pressure ulcer of left buttock, stage 3		
L89.324	Pressure ulcer of left buttock, stage 4		
L89.41	Pressure ulcer of contiguous site of back, buttock and hip, stage 1		
L89.42	Pressure ulcer of contiguous site of back, buttock and hip, stage 2		
L89.43	Pressure ulcer of contiguous site of back, buttock and hip, stage 3		
L89.44	Pressure ulcer of contiguous site of back, buttock and hip, stage 4		
L89.45	Pressure ulcer of contiguous site of back, buttock and hip, unstageable		
M62.3	Immobility syndrome (paraplegic)		
M62.89	Other specified disorders of muscle		
Q05.0	Cervical spina bifida with hydrocephalus		
Q05.1	Thoracic spina bifida with hydrocephalus		
Q05.2	Lumbar spina bifida with hydrocephalus		
Q05.3	Sacral spina bifida with hydrocephalus		

Positioning

HCPCS Codes

E2605

Positioning wheelchair seat cushion, width ***less than*** 22 inches, any depth

E2606

Positioning wheelchair seat cushion, width 22 inches ***or greater***, any depth

E2613

Positioning wheelchair back cushion, posterior, width ***less than*** 22 inches, any height, including any type mounting hardware.

E2614

Positioning wheelchair back cushion, posterior, width 22 inches ***or greater***, any height, including any type mounting hardware.

E2615

Positioning wheelchair back cushion, posterior, width ***less than*** 22 inches, any height, including any type mounting hardware.

E2616

Positioning wheelchair back cushion, posterior, width 22 inches ***or greater***, any height, including any type mounting hardware.

E2620

Positioning wheelchair back cushion, posterior, width ***less than*** 22 inches, any height, including any type mounting hardware.

E2621

Positioning wheelchair back cushion, posterior, width 22 inches ***or greater***, any height, including any type mounting hardware.



ROHO® AirLITE® Cushion
(E2605)



ROHO® AGILITY® Back Support
(foam + lumbar)
(E2613)



ROHO® AGILITY® Back Support
(foam with air insert + lumbar)
(E2615)



ROHO® AGILITY® Back Support
(foam with air insert)
(E2620)



Comfort ACTA-BACK®
Back Support
(E2613, E2614)



Comfort ACTA-EMBRACE®
Back Support
(E2613, E2614)



Comfort INCREDIBACK® Back
Support, Comfort INCREDIBACK®
Deep Back Support
(E2613, E2614)



Comfort ACTA-Relief
Back Support
(E2615)



Comfort ACTA-BACK® Deep
Back Support
(E2615, E2616)



Comfort ACTA-BACK®
Contour Back Support
(E2620, E2621)



Comfort ACTA-Relief
LTS Back Support
(E2620, E2621)



Comfort ACTA-BACK®
LTS Back Support
(E2620, E2621)



Comfort ACTA-EMBRACE®
LTS Back Support
(E2620, E2621)

Qualifying ICD-10 Diagnosis Conditions and Codes

A positioning seat cushion (E2605, E2606) and positioning back cushion (E2613, E2615, E2620), is covered for a beneficiary who meets both of the following criteria:

1. The beneficiary has a manual wheelchair or a power wheelchair with a sling/solid seat/back and the beneficiary meets Medicare coverage criteria for it; and
2. The beneficiary has any significant postural asymmetries that are due to one of the diagnoses listed previously in criterion 2b or to one of the following diagnoses: monoplegia of the lower limb due to stroke, traumatic brain injury, or other etiology, spinocerebellar disease, above knee leg amputation, osteogenesis imperfecta, transverse myelitis (see diagnosis codes that support medical necessity on the next page).

Diagnosis Codes

B91	Sequelae of poliomyelitis	G36.1	Acute and subacute hemorrhagic leukoencephalitis [Hurst]
E75.00	GM2 gangliosidosis, unspecified	G36.8	Other specified acute disseminated demyelination
E75.01	Sandhoff disease	G36.9	Acute disseminated demyelination, unspecified
E75.02	Tay-Sachs disease	G37.0	Diffuse sclerosis of central nervous system
E75.09	Other GM2 gangliosidosis	G37.1	Central demyelination of corpus callosum
E75.10	Unspecified gangliosidosis	G37.2	Central pontine myelinolysis
E75.11	Mucopolipidosis IV	G37.3	Acute transverse myelitis in demyelinating disease of central nervous system
E75.19	Other gangliosidosis	G37.4	Subacute necrotizing myelitis of central nervous system
E75.23	Krabbe disease	G37.5	Concentric sclerosis [Balo] of central nervous system
E75.25	Metachromatic leukodystrophy	G37.8	Other specified demyelinating diseases of central nervous system
E75.29	Other sphingolipidosis	G37.9	Demyelinating disease of central nervous system, unspecified
E75.4	Neuronal ceroid lipofuscinosis	G61.00	Guillain-Barre syndrome
F84.2	Rett's syndrome	G71.00	Muscular dystrophy, unspecified
G04.1	Tropical spastic paraplegia	G71.01	Duchenne or Becker muscular dystrophy
G04.89	Other myelitis	G71.02	Facioscapulohumeral muscular dystrophy
G10	Huntington's disease	G71.09	Other specified muscular dystrophies
G11.0	Congenital nonprogressive ataxia	G71.11	Myotonic muscular dystrophy
G11.1	Early-onset cerebellar ataxia	G71.2	Congenital myopathies
G11.2	Late-onset cerebellar ataxia	G80.0	Spastic quadriplegic cerebral palsy
G11.3	Cerebellar ataxia with defective DNA repair	G80.1	Spastic diplegic cerebral palsy
G11.4	Hereditary spastic paraplegia	G80.2	Spastic hemiplegic cerebral palsy
G11.8	Other hereditary ataxias	G80.3	Athetoid cerebral palsy
G11.9	Hereditary ataxia, unspecified	G80.4	Ataxic cerebral palsy
G12.0	Infantile spinal muscular atrophy, type I [Werdnig-Hoffman]	G80.8	Other cerebral palsy
G12.1	Other inherited spinal muscular atrophy	G80.9	Cerebral palsy, unspecified
G12.20	Motor neuron disease, unspecified	G81.00	Flaccid hemiplegia affecting unspecified side
G12.21	Amyotrophic lateral sclerosis	G81.01	Flaccid hemiplegia affecting right dominant side
G12.23	Primary lateral sclerosis	G81.02	Flaccid hemiplegia affecting left dominant side
G12.24	Familial motor neuron disease	G81.03	Flaccid hemiplegia affecting right nondominant side
G12.25	Progressive spinal muscle atrophy	G81.04	Flaccid hemiplegia affecting left nondominant side
G12.29	Other motor neuron disease	G81.10	Spastic hemiplegia affecting unspecified side
G12.8	Other spinal muscular atrophies and related syndromes	G81.11	Spastic hemiplegia affecting right dominant side
G12.9	Spinal muscular atrophy, unspecified	G81.12	Spastic hemiplegia affecting left dominant side
G14	Postpolio syndrome	G81.13	Spastic hemiplegia affecting right nondominant side
G20	Parkinson's disease	G81.14	Spastic hemiplegia affecting left nondominant side
G21.4	Vascular parkinsonism	G81.90	Hemiplegia, unspecified affecting unspecified side
G24.1	Genetic torsion dystonia	G81.91	Hemiplegia, unspecified affecting right dominant side
G30.0	Alzheimer's disease with early onset	G81.92	Hemiplegia, unspecified affecting left dominant side
G30.1	Alzheimer's disease with late onset		
G30.8	Other Alzheimer's disease		
G30.9	Alzheimer's disease, unspecified		
G31.81	Alpers disease		
G31.82	Leigh's disease		
G32.0	Subacute combined degeneration of spinal cord in diseases classified elsewhere		
G32.81	Cerebellar ataxia in diseases classified elsewhere		
G32.89	Other specified degenerative disorders of nervous system in diseases classified elsewhere		
G35	Multiple sclerosis		
G36.0	Neuromyelitis optica [Devic]		

G81.93	Hemiplegia, unspecified affecting right nondominant side	I69.059	Hemiplegia and hemiparesis following nontraumatic subarachnoid hemorrhage affecting unspecified side
G81.94	Hemiplegia, unspecified affecting left nondominant side	I69.141	Monoplegia of lower limb following nontraumatic intracerebral hemorrhage affecting right dominant side
G82.20	Paraplegia, unspecified	I69.142	Monoplegia of lower limb following nontraumatic intracerebral hemorrhage affecting left dominant side
G82.21	Paraplegia, complete	I69.143	Monoplegia of lower limb following nontraumatic intracerebral hemorrhage affecting right nondominant side
G82.22	Paraplegia, incomplete	I69.144	Monoplegia of lower limb following nontraumatic intracerebral hemorrhage affecting left nondominant side
G82.50	Quadriplegia, unspecified	I69.149	Monoplegia of lower limb following nontraumatic intracerebral hemorrhage affecting unspecified side
G82.51	Quadriplegia, C1-C4 complete	I69.151	Hemiplegia and hemiparesis following nontraumatic intracerebral hemorrhage affecting right dominant side
G82.52	Quadriplegia, C1-C4 incomplete	I69.152	Hemiplegia and hemiparesis following nontraumatic intracerebral hemorrhage affecting left dominant side
G82.53	Quadriplegia, C5-C7 complete	I69.153	Hemiplegia and hemiparesis following nontraumatic intracerebral hemorrhage affecting right nondominant side
G82.54	Quadriplegia, C5-C7 incomplete	I69.154	Hemiplegia and hemiparesis following nontraumatic intracerebral hemorrhage affecting left nondominant side
G83.10	Monoplegia of lower limb affecting unspecified side	I69.159	Hemiplegia and hemiparesis following nontraumatic intracerebral hemorrhage affecting unspecified side
G83.11	Monoplegia of lower limb affecting right dominant side	I69.241	Monoplegia of lower limb following other nontraumatic intracranial hemorrhage affecting right dominant side
G83.12	Monoplegia of lower limb affecting left dominant side	I69.242	Monoplegia of lower limb following other nontraumatic intracranial hemorrhage affecting left dominant side
G83.13	Monoplegia of lower limb affecting right nondominant side	I69.243	Monoplegia of lower limb following other nontraumatic intracranial hemorrhage affecting right nondominant side
G83.14	Monoplegia of lower limb affecting left nondominant side	I69.244	Monoplegia of lower limb following other nontraumatic intracranial hemorrhage affecting left nondominant side
G93.89	Other specified disorders of brain	I69.249	Monoplegia of lower limb following other nontraumatic intracranial hemorrhage affecting unspecified side
G93.9	Disorder of brain, unspecified	I69.251	Hemiplegia and hemiparesis following other nontraumatic intracranial hemorrhage affecting right dominant side
G94	Other disorders of brain in diseases classified elsewhere	I69.252	Hemiplegia and hemiparesis following other nontraumatic intracranial hemorrhage affecting left dominant side
G95.0	Syringomyelia and syringobulbia	I69.253	Hemiplegia and hemiparesis following other nontraumatic intracranial hemorrhage affecting right non-dominant side
G95.11	Acute infarction of spinal cord (embolic) (nonembolic)	I69.254	Hemiplegia and hemiparesis following other nontraumatic intracranial hemorrhage affecting left non-dominant side
G95.19	Other vascular myelopathies		
G99.2	Myelopathy in diseases classified elsewhere		
I69.041	Monoplegia of lower limb following nontraumatic subarachnoid hemorrhage affecting right dominant side		
I69.042	Monoplegia of lower limb following nontraumatic subarachnoid hemorrhage affecting left dominant side		
I69.043	Monoplegia of lower limb following nontraumatic subarachnoid hemorrhage affecting right nondominant side		
I69.044	Monoplegia of lower limb following nontraumatic subarachnoid hemorrhage affecting left nondominant side		
I69.049	Monoplegia of lower limb following nontraumatic subarachnoid affecting unspecified side		
I69.051	Hemiplegia and hemiparesis following nontraumatic subarachnoid hemorrhage affecting right dominant side		
I69.052	Hemiplegia and hemiparesis following nontraumatic subarachnoid hemorrhage affecting left dominant side		
I69.053	Hemiplegia and hemiparesis following nontraumatic subarachnoid hemorrhage affecting right nondominant side		
I69.054	Hemiplegia and hemiparesis following nontraumatic subarachnoid hemorrhage affecting left nondominant side		

I69.259	Hemiplegia and hemiparesis following other nontraumatic intracranial hemorrhage affecting unspecified side	I69.942	Monoplegia of lower limb following unspecified cerebrovascular disease affecting left dominant side
I69.341	Monoplegia of lower limb following cerebral infarction affecting right dominant side	I69.943	Monoplegia of lower limb following unspecified cerebrovascular disease affecting right nondominant side
I69.342	Monoplegia of lower limb following cerebral infarction affecting left dominant side	I69.944	Monoplegia of lower limb following unspecified cerebrovascular disease affecting left non-dominant side
I69.343	Monoplegia of lower limb following cerebral infarction affecting right non-dominant side	I69.949	Monoplegia of lower limb following unspecified cerebrovascular disease affecting unspecified side
I69.344	Monoplegia of lower limb following cerebral infarction affecting left non-dominant side	I69.951	Hemiplegia and hemiparesis following unspecified cerebrovascular disease affecting right dominant side
I69.349	Monoplegia of lower limb following cerebral infarction affecting unspecified side	I69.952	Hemiplegia and hemiparesis following unspecified cerebrovascular disease affecting left dominant side
I69.351	Hemiplegia and hemiparesis following cerebral infarction affecting right dominant side	I69.953	Hemiplegia and hemiparesis following unspecified cerebrovascular disease affecting right nondominant side
I69.352	Hemiplegia and hemiparesis following cerebral infarction affecting left dominant side	I69.954	Hemiplegia and hemiparesis following unspecified cerebrovascular disease affecting left nondominant side
I69.353	Hemiplegia and hemiparesis following cerebral infarction affecting right non-dominant side	I69.959	Hemiplegia and hemiparesis following unspecified cerebrovascular disease affecting unspecified side
I69.354	Hemiplegia and hemiparesis following cerebral infarction affecting left non-dominant side	M62.3	Immobility syndrome (paraplegic)
I69.359	Hemiplegia and hemiparesis following cerebral infarction affecting unspecified side	M62.89	Other specified disorders of muscle
I69.841	Monoplegia of lower limb following other cerebrovascular disease affecting right dominant side	Q05.0	Cervical spina bifida with hydrocephalus
I69.842	Monoplegia of lower limb following other cerebrovascular disease affecting left dominant side	Q05.1	Thoracic spina bifida with hydrocephalus
I69.843	Monoplegia of lower limb following other cerebrovascular disease affecting right non-dominant side	Q05.2	Lumbar spina bifida with hydrocephalus
I69.844	Monoplegia of lower limb following other cerebrovascular disease affecting left non-dominant side	Q05.3	Sacral spina bifida with hydrocephalus
I69.849	Monoplegia of lower limb following other cerebrovascular disease affecting unspecified side	Q05.4	Unspecified spina bifida with hydrocephalus
I69.851	Hemiplegia and hemiparesis following other cerebrovascular disease affecting right dominant side	Q05.5	Cervical spina bifida without hydrocephalus
I69.852	Hemiplegia and hemiparesis following other cerebrovascular disease affecting left dominant side	Q05.6	Thoracic spina bifida without hydrocephalus
I69.853	Hemiplegia and hemiparesis following other cerebrovascular disease affecting right non-dominant side	Q05.7	Lumbar spina bifida without hydrocephalus
I69.854	Hemiplegia and hemiparesis following other cerebrovascular disease affecting left non-dominant side	Q05.8	Sacral spina bifida without hydrocephalus
I69.859	Hemiplegia and hemiparesis following other cerebrovascular disease affecting unspecified side	Q05.9	Spina bifida, unspecified
I69.941	Monoplegia of lower limb following unspecified cerebrovascular disease affecting right dominant side	Q07.00	Arnold-Chiari syndrome without spina bifida or hydrocephalus
		Q07.01	Arnold-Chiari syndrome with spina bifida
		Q07.02	Arnold-Chiari syndrome with hydrocephalus
		Q07.03	Arnold-Chiari syndrome with spina bifida and hydrocephalus
		Q67.8	Other congenital deformities of chest
		Q68.1	Congenital deformity of finger(s) and hand
		Q74.3	Arthrogryposis multiplex congenita
		Q78.0	Osteogenesis imperfecta
		S78.011A	Complete traumatic amputation at right hip joint, initial encounter
		S78.011D	Complete traumatic amputation at right hip joint, subsequent encounter
		S78.011S	Complete traumatic amputation at right hip joint, sequela
		S78.012A	Complete traumatic amputation at left hip joint, initial encounter

S78.012D	Complete traumatic amputation at left hip joint, subsequent encounter	S78.122A	Partial traumatic amputation at level between left hip and knee, initial encounter
S78.012S	Complete traumatic amputation at left hip joint, sequela	S78.122D	Partial traumatic amputation at level between left hip and knee, subsequent encounter
S78.019A	Complete traumatic amputation at unspecified hip joint, initial encounter	S78.122S	Partial traumatic amputation at level between left hip and knee, sequela
S78.019D	Complete traumatic amputation at unspecified hip joint, subsequent encounter	S78.129A	Partial traumatic amputation at level between unspecified hip and knee, initial encounter
S78.019S	Complete traumatic amputation at unspecified hip joint, sequela	S78.129D	Partial traumatic amputation at level between unspecified hip and knee, subsequent encounter
S78.021A	Partial traumatic amputation at right hip joint, initial encounter	S78.129S	Partial traumatic amputation at level between unspecified hip and knee, sequela
S78.021D	Partial traumatic amputation at right hip joint, subsequent encounter	S78.911A	Complete traumatic amputation of right hip and thigh, level unspecified, initial encounter
S78.021S	Partial traumatic amputation at right hip joint, sequela	S78.911D	Complete traumatic amputation of right hip and thigh, level unspecified, subsequent encounter
S78.022A	Partial traumatic amputation at left hip joint, initial encounter	S78.911S	Complete traumatic amputation of right hip and thigh, level unspecified, sequela
S78.022D	Partial traumatic amputation at left hip joint, subsequent encounter	S78.912A	Complete traumatic amputation of left hip and thigh, level unspecified, initial encounter
S78.022S	Partial traumatic amputation at left hip joint, sequela	S78.912D	Complete traumatic amputation of left hip and thigh, level unspecified, subsequent encounter
S78.029A	Partial traumatic amputation at unspecified hip joint, initial encounter	S78.912S	Complete traumatic amputation of left hip and thigh, level unspecified, sequela
S78.029D	Partial traumatic amputation at unspecified hip joint, subsequent encounter	S78.919A	Complete traumatic amputation of unspecified hip and thigh, level unspecified, initial encounter
S78.029S	Partial traumatic amputation at unspecified hip joint, sequela	S78.919D	Complete traumatic amputation of unspecified hip and thigh, level unspecified, subsequent encounter
S78.111A	Complete traumatic amputation at level between right hip and knee, initial encounter	S78.919S	Complete traumatic amputation of unspecified hip and thigh, level unspecified, sequela
S78.111D	Complete traumatic amputation at level between right hip and knee, subsequent encounter	S78.921A	Partial traumatic amputation of right hip and thigh, level unspecified, initial encounter
S78.111S	Complete traumatic amputation at level between right hip and knee, sequela	S78.921D	Partial traumatic amputation of right hip and thigh, level unspecified, subsequent encounter
S78.112A	Complete traumatic amputation at level between left hip and knee, initial encounter	S78.921S	Partial traumatic amputation of right hip and thigh, level unspecified, sequela
S78.112D	Complete traumatic amputation at level between left hip and knee, subsequent encounter	S78.922A	Partial traumatic amputation of left hip and thigh, level unspecified, initial encounter
S78.112S	Complete traumatic amputation at level between left hip and knee, sequela	S78.922D	Partial traumatic amputation of left hip and thigh, level unspecified, subsequent encounter
S78.119A	Complete traumatic amputation at level between unspecified hip and knee, initial encounter	S78.922S	Partial traumatic amputation of left hip and thigh, level unspecified, sequela
S78.119D	Complete traumatic amputation at level between unspecified hip and knee, subsequent encounter	S78.929A	Partial traumatic amputation of unspecified hip and thigh, level unspecified, initial encounter
S78.119S	Complete traumatic amputation at level between unspecified hip and knee, sequela	S78.929D	Partial traumatic amputation of unspecified hip and thigh, level unspecified, subsequent encounter
S78.121A	Partial traumatic amputation at level between right hip and knee, initial encounter		
S78.121D	Partial traumatic amputation at level between right hip and knee, subsequent encounter		
S78.121S	Partial traumatic amputation at level between right hip and knee, sequela		

S78.929S	Partial traumatic amputation of unspecified hip and thigh, level unspecified, sequela	S88.919A	Complete traumatic amputation of unspecified lower leg, level unspecified, initial encounter
S88.011A	Complete traumatic amputation at knee level, right lower leg, initial encounter	S88.919D	Complete traumatic amputation of unspecified lower leg, level unspecified, subsequent encounter
S88.011D	Complete traumatic amputation at knee level, right lower leg, subsequent encounter	S88.919S	Complete traumatic amputation of unspecified lower leg, level unspecified, sequela
S88.011S	Complete traumatic amputation at knee level, right lower leg, sequela	S88.921A	Partial traumatic amputation of right lower leg, level unspecified, initial encounter
S88.012A	Complete traumatic amputation at knee level, left lower leg, initial encounter	S88.921D	Partial traumatic amputation of right lower leg, level unspecified, subsequent encounter
S88.012D	Complete traumatic amputation at knee level, left lower leg, subsequent encounter	S88.921S	Partial traumatic amputation of right lower leg, level unspecified, sequela
S88.012S	Complete traumatic amputation at knee level, left lower leg, sequela	S88.922A	Partial traumatic amputation of left lower leg, level unspecified, initial encounter
S88.019A	Complete traumatic amputation at knee level, unspecified lower leg, initial encounter	S88.922D	Partial traumatic amputation of left lower leg, level unspecified, subsequent encounter
S88.019D	Complete traumatic amputation at knee level, unspecified lower leg, subsequent encounter	S88.922S	Partial traumatic amputation of left lower leg, level unspecified, sequela
S88.019S	Complete traumatic amputation at knee level, unspecified lower leg, sequela	S88.929A	Partial traumatic amputation of unspecified lower leg, level unspecified, initial encounter
S88.021A	Partial traumatic amputation at knee level, right lower leg, initial encounter	S88.929D	Partial traumatic amputation of unspecified lower leg, level unspecified, subsequent encounter
S88.021D	Partial traumatic amputation at knee level, right lower leg, subsequent encounter	S88.929S	Partial traumatic amputation of unspecified lower leg, level unspecified, sequela
S88.021S	Partial traumatic amputation at knee level, right lower leg, sequela	Z89.511	Acquired absence of right leg below knee
S88.022A	Partial traumatic amputation at knee level, left lower leg, initial encounter	Z89.512	Acquired absence of left leg below knee
S88.022D	Partial traumatic amputation at knee level, left lower leg, subsequent encounter	Z89.519	Acquired absence of unspecified leg below knee
S88.022S	Partial traumatic amputation at knee level, left lower leg, sequela	Z89.611	Acquired absence of right leg above knee
S88.029A	Partial traumatic amputation at knee level, unspecified lower leg, initial encounter	Z89.612	Acquired absence of left leg above knee
S88.029D	Partial traumatic amputation at knee level, unspecified lower leg, subsequent encounter	Z89.619	Acquired absence of unspecified leg above knee
S88.029S	Partial traumatic amputation at knee level, unspecified lower leg, sequela	Z89.621	Acquired absence of right hip joint
S88.911A	Complete traumatic amputation of right lower leg, level unspecified, initial encounter	Z89.622	Acquired absence of left hip joint
S88.911D	Complete traumatic amputation of right lower leg, level unspecified, subsequent encounter	Z89.629	Acquired absence of unspecified hip joint
S88.911S	Complete traumatic amputation of right lower leg, level unspecified, sequela		
S88.912A	Complete traumatic amputation of left lower leg, level unspecified, initial encounter		
S88.912D	Complete traumatic amputation of left lower leg, level unspecified, subsequent encounter		
S88.912S	Complete traumatic amputation of left lower leg, level unspecified, sequela		

Skin Protection & Positioning

HCPCS Codes

E2603 Skin protection and positioning wheelchair seat cushion, width *less than* 22 inches, any depth.

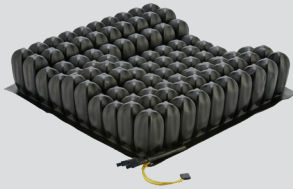
E2604 Skin protection and positioning wheelchair seat cushion, width 22 inches *or greater*, any depth.

E2607 Skin protection and positioning wheelchair seat cushion, width *less than* 22 inches, any depth.

E2608 Skin protection and positioning wheelchair seat cushion, width 22 inches *or greater*, any depth.

E2624 Skin protection and positioning wheelchair seat cushion, width *less than* 22 inches, any depth.

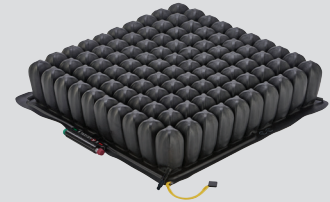
E2625 Skin protection and positioning wheelchair seat cushion, width 22 inches *or greater*, any depth.



ROHO® ENHANCER® Cushion
(E2624, E2625)



ROHO® CONTOUR SELECT®
Cushion (E2624, E2625)



ROHO® QUADTRO SELECT®
HIGH PROFILE® Cushion
(E2624, E2625)



ROHO® QUADTRO SELECT®
MID PROFILE™ Cushion
(E2624, E2625)



ROHO® QUADTRO SELECT®
LOW PROFILE® Cushion
(E2624, E2625)



ROHO® HIGH PROFILE® Dual
Compartment Cushion
(E2624, E2625)



ROHO® LOW PROFILE® Dual
Compartment Cushion
(E2624, E2625)



Comfort Ascent Cushion
(E2603, E2604)



Comfort M2 Cushion
(E2607, E2608)



Comfort ACTA-EMBRACE®
Cushion
(E2607, E2608)



Comfort Saddle Cushion
(E2067, E2608)



Comfort Saddle 7 Series Cushion
(E2608)



Comfort ACTA-EMBRACE®
Cushion with ATI
(E2624, E2625)



Comfort M2 Cushion with ATI
(E2624, E2625)



ROHO® Hybrid Select Cushion
(E2624)



Vicair® Vector O2 Cushion
(E2624, E2625)



Vicair® Active O2 Cushion
(E2624, E2625)

Qualifying ICD-10 Diagnosis Conditions and Codes

A combination skin protection and positioning seat cushion (E2607, E2608, E2624, E2625) is covered for a beneficiary who meets the criteria for BOTH a skin protection seat cushion AND a positioning seat cushion.

If a skin protection seat cushion, positioning seat cushion, or combination skin protection and positioning seat cushion is provided and if the stated coverage criteria are not met, it will be denied as not reasonable and necessary.

If a positioning back cushion is provided for a beneficiary who does not meet the stated coverage criteria, it will be denied as not reasonable and necessary.

For HCPCS codes E2607, E2608, E2624 & E2625, use one of the following (either a or b): (a) one diagnosis code from Group 2 or (b) one diagnosis code from Group 1 and one diagnosis from Group 3 (total of 2 diagnosis codes).

a) One of the following ICD-10 codes:

B91	Sequelae of poliomyelitis	G35	Multiple sclerosis
E75.00	GM2 gangliosidosis, unspecified	G36.0	Neuromyelitis optica [Devic]
E75.01	Sandhoff disease	G36.1	Acute and subacute hemorrhagic leukoencephalitis [Hurst]
E75.02	Tay-Sachs disease	G36.8	Other specified acute disseminated demyelination
E75.09	Other GM2 gangliosidosis	G36.9	Acute disseminated demyelination, unspecified
E75.10	Unspecified gangliosidosis	G37.0	Diffuse sclerosis of central nervous system
E75.11	Mucopolipidosis IV	G37.1	Central demyelination of corpus callosum
E75.19	Other gangliosidosis	G37.2	Central pontine myelinolysis
E75.23	Krabbe disease	G37.3	Acute transverse myelitis in demyelinating disease of central nervous system
E75.25	Metachromatic leukodystrophy	G37.4	Subacute necrotizing myelitis of central nervous system
E75.29	Other sphingolipidosis	G37.5	Concentric sclerosis [Balo] of central nervous system
E75.4	Neuronal ceroid lipofuscinosis	G37.8	Other specified demyelinating diseases of central nervous system
F84.2	Rett's syndrome	G37.9	Demyelinating disease of central nervous system, unspecified
G04.1	Tropical spastic paraplegia	G61.0	Guillain-Barre syndrome
G04.89	Other myelitis	G71.00	Muscular dystrophy
G10	Huntington's disease	G71.01	Duchenne or Becker muscular dystrophy
G11.0	Congenital nonprogressive ataxia	G71.02	Facioscapulohumeral muscular dystrophy
G11.1	Early-onset cerebellar ataxia	G71.09	Other specified muscular dystrophies
G11.2	Late-onset cerebellar ataxia	G71.11	Myotonic muscular dystrophy
G11.3	Cerebellar ataxia with defective DNA repair	G71.2	Congenital myopathies
G11.4	Hereditary spastic paraplegia	G80.0	Spastic quadriplegic cerebral palsy
G11.8	Other hereditary ataxias	G80.1	Spastic diplegic cerebral palsy
G11.9	Hereditary ataxia, unspecified	G80.2	Spastic hemiplegic cerebral palsy
G12.0	Infantile spinal muscular atrophy, type I [Werdnig-Hoffman]	G80.3	Athetoid cerebral palsy
G12.1	Other inherited spinal muscular atrophy	G80.4	Ataxic cerebral palsy
G12.20	Motor neuron disease, unspecified	G80.8	Other cerebral palsy
G12.21	Amyotrophic lateral sclerosis	G80.9	Cerebral palsy, unspecified
G12.23	Primary lateral sclerosis	G81.00	Flaccid hemiplegia affecting unspecified side
G12.24	Familial motor neuron disease	G81.01	Flaccid hemiplegia affecting right dominant side
G12.25	Progressive spinal muscle atrophy	G81.02	Flaccid hemiplegia affecting left dominant side
G12.29	Other motor neuron disease	G81.03	Flaccid hemiplegia affecting right nondominant side
G12.8	Other spinal muscular atrophies and related syndromes	G81.04	Flaccid hemiplegia affecting left nondominant side
G12.9	Spinal muscular atrophy, unspecified	G81.10	Spastic hemiplegia affecting unspecified side
G14	Postpolio syndrome	G81.11	Spastic hemiplegia affecting right dominant side
G20	Parkinson's disease	G81.12	Spastic hemiplegia affecting left dominant side
G21.4	Vascular parkinsonism	G81.13	Spastic hemiplegia affecting right nondominant side
G24.1	Genetic torsion dystonia	G81.14	Spastic hemiplegia affecting left nondominant side
G30.0	Alzheimer's disease with early onset		
G30.1	Alzheimer's disease with late onset		
G30.8	Other Alzheimer's disease		
G30.9	Alzheimer's disease, unspecified		
G31.81	Alpers disease		
G31.82	Leigh's disease		
G32.0	Subacute combined degeneration of spinal cord in diseases classified elsewhere		
G32.81	Cerebellar ataxia in diseases classified elsewhere		
G32.89	Other specified degenerative disorders of nervous system in diseases classified elsewhere		

G81.90	Hemiplegia, unspecified affecting unspecified side	I69.251	Hemiplegia and hemiparesis following other nontraumatic intracranial hemorrhage affecting right dominant side
G81.91	Hemiplegia, unspecified affecting right dominant side	I69.252	Hemiplegia and hemiparesis following other nontraumatic intracranial hemorrhage affecting left dominant side
G81.92	Hemiplegia, unspecified affecting left dominant side	I69.253	Hemiplegia and hemiparesis following other nontraumatic intracranial hemorrhage affecting right non-dominant side
G81.93	Hemiplegia, unspecified affecting right nondominant side	I69.254	Hemiplegia and hemiparesis following other nontraumatic intracranial hemorrhage affecting left non-dominant side
G81.94	Hemiplegia, unspecified affecting left nondominant side	I69.259	Hemiplegia and hemiparesis following other nontraumatic intracranial hemorrhage affecting unspecified side
G82.20	Paraplegia, unspecified	I69.351	Hemiplegia and hemiparesis following cerebral infarction affecting right dominant side
G82.21	Paraplegia, complete	I69.352	Hemiplegia and hemiparesis following cerebral infarction affecting left dominant side
G82.22	Paraplegia, incomplete	I69.353	Hemiplegia and hemiparesis following cerebral infarction affecting right non-dominant side
G82.50	Quadriplegia, unspecified	I69.354	Hemiplegia and hemiparesis following cerebral infarction affecting left non-dominant side
G82.51	Quadriplegia, C1-C4 complete	I69.359	Hemiplegia and hemiparesis following cerebral infarction affecting unspecified side
G82.52	Quadriplegia, C1-C4 incomplete	I69.851	Hemiplegia and hemiparesis following other cerebrovascular disease affecting right dominant side
G82.53	Quadriplegia, C5-C7 complete	I69.852	Hemiplegia and hemiparesis following other cerebrovascular disease affecting left dominant side
G82.54	Quadriplegia, C5-C7 incomplete	I69.853	Hemiplegia and hemiparesis following other cerebrovascular disease affecting right non-dominant side
G93.89	Other specified disorders of brain	I69.854	Hemiplegia and hemiparesis following other cerebrovascular disease affecting left non-dominant side
G93.9	Disorder of brain, unspecified	I69.859	Hemiplegia and hemiparesis following other cerebrovascular disease affecting unspecified side
G94	Other disorders of brain in diseases classified elsewhere	I69.951	Hemiplegia and hemiparesis following unspecified cerebrovascular disease affecting right dominant side
G95.0	Syringomyelia and syringobulbia	I69.952	Hemiplegia and hemiparesis following unspecified cerebrovascular disease affecting left dominant side
G95.11	Acute infarction of spinal cord (embolic) (nonembolic)	I69.953	Hemiplegia and hemiparesis following unspecified cerebrovascular disease affecting right nondominant side
G95.19	Other vascular myelopathies	I69.954	Hemiplegia and hemiparesis following unspecified cerebrovascular disease affecting left nondominant side
G99.2	Myelopathy in diseases classified elsewhere	I69.959	Hemiplegia and hemiparesis following unspecified cerebrovascular disease affecting unspecified side
I69.051	Hemiplegia and hemiparesis following nontraumatic subarachnoid hemorrhage affecting right dominant side		
I69.052	Hemiplegia and hemiparesis following nontraumatic subarachnoid hemorrhage affecting left dominant side		
I69.053	Hemiplegia and hemiparesis following nontraumatic subarachnoid hemorrhage affecting right nondominant side		
I69.054	Hemiplegia and hemiparesis following nontraumatic subarachnoid hemorrhage affecting left nondominant side		
I69.059	Hemiplegia and hemiparesis following nontraumatic subarachnoid hemorrhage affecting unspecified side		
I69.151	Hemiplegia and hemiparesis following nontraumatic intracerebral hemorrhage affecting right dominant side		
I69.152	Hemiplegia and hemiparesis following nontraumatic intracerebral hemorrhage affecting left dominant side		
I69.153	Hemiplegia and hemiparesis following nontraumatic intracerebral hemorrhage affecting right nondominant side		
I69.154	Hemiplegia and hemiparesis following nontraumatic intracerebral hemorrhage affecting left nondominant side		
I69.159	Hemiplegia and hemiparesis following nontraumatic intracerebral hemorrhage affecting unspecified side		

M62.3	Immobility syndrome (paraplegic)
M62.89	Other specified disorders of muscle
Q05.0	Cervical spina bifida with hydrocephalus
Q05.1	Thoracic spina bifida with hydrocephalus
Q05.2	Lumbar spina bifida with hydrocephalus
Q05.3	Sacral spina bifida with hydrocephalus
Q05.4	Unspecified spina bifida with hydrocephalus
Q05.5	Cervical spina bifida without hydrocephalus
Q05.6	Thoracic spina bifida without hydrocephalus
Q05.7	Lumbar spina bifida without hydrocephalus
Q05.8	Sacral spina bifida without hydrocephalus
Q05.9	Spina bifida, unspecified
Q07.00	Arnold-Chiari syndrome without spina bifida or hydrocephalus
Q07.01	Arnold-Chiari syndrome with spina bifida
Q07.02	Arnold-Chiari syndrome with hydrocephalus
Q07.03	Arnold-Chiari syndrome with spina bifida and hydrocephalus
Q67.8	Other congenital deformities of chest
Q68.1	Congenital deformity of finger(s) and hand
Q74.3	Arthrogryposis multiplex congenita
Q78.0	Osteogenesis imperfecta

OR

b) A combination of ICD-10 code:

L89.130	Pressure ulcer of right lower back, unstageable
L89.131	Pressure ulcer of right lower back, stage 1
L89.132	Pressure ulcer of right lower back, stage 2
L89.133	Pressure ulcer of right lower back, stage 3
L89.134	Pressure ulcer of right lower back, stage 4
L89.140	Pressure ulcer of left lower back, unstageable
L89.141	Pressure ulcer of left lower back, stage 1
L89.142	Pressure ulcer of left lower back, stage 2
L89.143	Pressure ulcer of left lower back, stage 3
L89.144	Pressure ulcer of left lower back, stage 4
L89.150	Pressure ulcer of sacral region, unstageable
L89.151	Pressure ulcer of sacral region, stage 1
L89.152	Pressure ulcer of sacral region, stage 2
L89.153	Pressure ulcer of sacral region, stage 3
L89.154	Pressure ulcer of sacral region, stage 4
L89.200	Pressure ulcer of unspecified hip, unstageable
L89.201	Pressure ulcer of unspecified hip, stage 1
L89.202	Pressure ulcer of unspecified hip, stage 2
L89.203	Pressure ulcer of unspecified hip, stage 3
L89.204	Pressure ulcer of unspecified hip, stage 4
L89.210	Pressure ulcer of right hip, unstageable
L89.211	Pressure ulcer of right hip, stage 1

L89.212	Pressure ulcer of right hip, stage 2
L89.213	Pressure ulcer of right hip, stage 3
L89.214	Pressure ulcer of right hip, stage 4
L89.220	Pressure ulcer of left hip, unstageable
L89.221	Pressure ulcer of left hip, stage 1
L89.222	Pressure ulcer of left hip, stage 2
L89.223	Pressure ulcer of left hip, stage 3
L89.224	Pressure ulcer of left hip, stage 4
L89.300	Pressure ulcer of unspecified buttock, unstageable
L89.301	Pressure ulcer of unspecified buttock, stage 1
L89.302	Pressure ulcer of unspecified buttock, stage 2
L89.303	Pressure ulcer of unspecified buttock, stage 3
L89.304	Pressure ulcer of unspecified buttock, stage 4
L89.310	Pressure ulcer of right buttock, unstageable
L89.311	Pressure ulcer of right buttock, stage 1
L89.312	Pressure ulcer of right buttock, stage 2
L89.313	Pressure ulcer of right buttock, stage 3
L89.314	Pressure ulcer of right buttock, stage 4
L89.320	Pressure ulcer of left buttock, unstageable
L89.321	Pressure ulcer of left buttock, stage 1
L89.322	Pressure ulcer of left buttock, stage 2
L89.323	Pressure ulcer of left buttock, stage 3
L89.324	Pressure ulcer of left buttock, stage 4
L89.41	Pressure ulcer of contiguous site of back, buttock and hip, stage 1
L89.42	Pressure ulcer of contiguous site of back, buttock and hip, stage 2
L89.43	Pressure ulcer of contiguous site of back, buttock and hip, stage 3
L89.44	Pressure ulcer of contiguous site of back, buttock and hip, stage 4
L89.45	Pressure ulcer of contiguous site of back, buttock and hip, unstageable

AND

One of the following ICD-10 codes:

G83.10	Monoplegia of lower limb affecting unspecified side
G83.11	Monoplegia of lower limb affecting right dominant side
G83.12	Monoplegia of lower limb affecting left dominant side
G83.13	Monoplegia of lower limb affecting right nondominant side
G83.14	Monoplegia of lower limb affecting left nondominant side
I69.041	Monoplegia of lower limb following nontraumatic subarachnoid hemorrhage affecting right dominant side

I69.042	Monoplegia of lower limb following nontraumatic subarachnoid hemorrhage affecting left dominant side	I69.843	Monoplegia of lower limb following other cerebrovascular disease affecting right non-dominant side
I69.043	Monoplegia of lower limb following nontraumatic subarachnoid hemorrhage affecting right nondominant side	I69.844	Monoplegia of lower limb following other cerebrovascular disease affecting left non-dominant side
I69.044	Monoplegia of lower limb following nontraumatic subarachnoid hemorrhage affecting left nondominant side	I69.849	Monoplegia of lower limb following other cerebrovascular disease affecting unspecified side
I69.049	Monoplegia of lower limb following nontraumatic subarachnoid hemorrhage affecting unspecified side	I69.941	Monoplegia of lower limb following unspecified cerebrovascular disease affecting right dominant side
I69.141	Monoplegia of lower limb following nontraumatic intracerebral hemorrhage affecting right dominant side	I69.942	Monoplegia of lower limb following unspecified cerebrovascular disease affecting left dominant side
I69.142	Monoplegia of lower limb following nontraumatic intracerebral hemorrhage affecting left dominant side	I69.943	Monoplegia of lower limb following unspecified cerebrovascular disease affecting right nondominant side
I69.143	Monoplegia of lower limb following nontraumatic intracerebral hemorrhage affecting right nondominant side	I69.944	Monoplegia of lower limb following unspecified cerebrovascular disease affecting left non-dominant side
I69.144	Monoplegia of lower limb following nontraumatic intracerebral hemorrhage affecting left nondominant side	I69.949	Monoplegia of lower limb following unspecified cerebrovascular disease affecting unspecified side
I69.149	Monoplegia of lower limb following nontraumatic intracerebral hemorrhage affecting unspecified side	Q78.0	Osteogenesis imperfecta
I69.241	Monoplegia of lower limb following other nontraumatic intracranial hemorrhage affecting right dominant side	S78.011A	Complete traumatic amputation at right hip joint, initial encounter
I69.242	Monoplegia of lower limb following other nontraumatic intracranial hemorrhage affecting left dominant side	S78.011D	Complete traumatic amputation at right hip joint, subsequent encounter
I69.243	Monoplegia of lower limb following other nontraumatic intracranial hemorrhage affecting right nondominant side	S78.011S	Complete traumatic amputation at right hip joint, sequela
I69.244	Monoplegia of lower limb following other nontraumatic intracranial hemorrhage affecting left nondominant side	S78.012A	Complete traumatic amputation at left hip joint, initial encounter
I69.249	Monoplegia of lower limb following other nontraumatic intracranial hemorrhage affecting unspecified side	S78.012D	Complete traumatic amputation at left hip joint, subsequent encounter
I69.341	Monoplegia of lower limb following cerebral infarction affecting right dominant side	S78.012S	Complete traumatic amputation at left hip joint, sequela
I69.342	Monoplegia of lower limb following cerebral infarction affecting left dominant side	S78.019A	Complete traumatic amputation at unspecified hip joint, initial encounter
I69.343	Monoplegia of lower limb following cerebral infarction affecting right non-dominant side	S78.019D	Complete traumatic amputation at unspecified hip joint, subsequent encounter
I69.344	Monoplegia of lower limb following cerebral infarction affecting left non-dominant side	S78.019S	Complete traumatic amputation at unspecified hip joint, sequela
I69.349	Monoplegia of lower limb following cerebral infarction affecting unspecified side	S78.021A	Partial traumatic amputation at right hip joint, initial encounter
I69.841	Monoplegia of lower limb following other cerebrovascular disease affecting right dominant side	S78.021D	Partial traumatic amputation at right hip joint, subsequent encounter
I69.842	Monoplegia of lower limb following other cerebrovascular disease affecting left dominant side	S78.021S	Partial traumatic amputation at right hip joint, sequela
		S78.022A	Partial traumatic amputation at left hip joint, initial encounter
		S78.022D	Partial traumatic amputation at left hip joint, subsequent encounter
		S78.022S	Partial traumatic amputation at left hip joint, sequela
		S78.029A	Partial traumatic amputation at unspecified hip joint, initial encounter

S78.029D	Partial traumatic amputation at unspecified hip joint, subsequent encounter	S78.912S	Complete traumatic amputation of left hip and thigh, level unspecified, sequela
S78.029S	Partial traumatic amputation at unspecified hip joint, sequela	S78.919A	Complete traumatic amputation of unspecified hip and thigh, level unspecified, initial encounter
S78.111A	Complete traumatic amputation at level between right hip and knee, initial encounter	S78.919D	Complete traumatic amputation of unspecified hip and thigh, level unspecified, subsequent encounter
S78.111D	Complete traumatic amputation at level between right hip and knee, subsequent encounter	S78.919S	Complete traumatic amputation of unspecified hip and thigh, level unspecified, sequela
S78.111S	Complete traumatic amputation at level between right hip and knee, sequela	S78.921A	Partial traumatic amputation of right hip and thigh, level unspecified, initial encounter
S78.112A	Complete traumatic amputation at level between left hip and knee, initial encounter	S78.921D	Partial traumatic amputation of right hip and thigh, level unspecified, subsequent encounter
S78.112D	Complete traumatic amputation at level between left hip and knee, subsequent encounter	S78.921S	Partial traumatic amputation of right hip and thigh, level unspecified, sequela
S78.112S	Complete traumatic amputation at level between left hip and knee, sequela	S78.922A	Partial traumatic amputation of left hip and thigh, level unspecified, initial encounter
S78.119A	Complete traumatic amputation at level between unspecified hip and knee, initial encounter	S78.922D	Partial traumatic amputation of left hip and thigh, level unspecified, subsequent encounter
S78.119D	Complete traumatic amputation at level between unspecified hip and knee, subsequent encounter	S78.922S	Partial traumatic amputation of left hip and thigh, level unspecified, sequela
S78.119S	Complete traumatic amputation at level between unspecified hip and knee, sequela	S78.929A	Partial traumatic amputation of unspecified hip and thigh, level unspecified, initial encounter
S78.121A	Partial traumatic amputation at level between right hip and knee, initial encounter	S78.929D	Partial traumatic amputation of unspecified hip and thigh, level unspecified, subsequent encounter
S78.121D	Partial traumatic amputation at level between right hip and knee, subsequent encounter	S78.929S	Partial traumatic amputation of unspecified hip and thigh, level unspecified, sequela
S78.121S	Partial traumatic amputation at level between right hip and knee, sequela	S88.011A	Complete traumatic amputation at knee level, right lower leg, initial encounter
S78.122A	Partial traumatic amputation at level between left hip and knee, initial encounter	S88.011D	Complete traumatic amputation at knee level, right lower leg, subsequent encounter
S78.122D	Partial traumatic amputation at level between left hip and knee, subsequent encounter	S88.011S	Complete traumatic amputation at knee level, right lower leg, sequela
S78.122S	Partial traumatic amputation at level between left hip and knee, sequela	S88.012A	Complete traumatic amputation at knee level, left lower leg, initial encounter
S78.129A	Partial traumatic amputation at level between unspecified hip and knee, initial encounter	S88.012D	Complete traumatic amputation at knee level, left lower leg, subsequent encounter
S78.129D	Partial traumatic amputation at level between unspecified hip and knee, subsequent encounter	S88.012S	Complete traumatic amputation at knee level, left lower leg, sequela
S78.129S	Partial traumatic amputation at level between unspecified hip and knee, sequela	S88.019A	Complete traumatic amputation at knee level, unspecified lower leg, initial encounter
S78.911A	Complete traumatic amputation of right hip and thigh, level unspecified, initial encounter	S88.019D	Complete traumatic amputation at knee level, unspecified lower leg, subsequent encounter
S78.911D	Complete traumatic amputation of right hip and thigh, level unspecified, subsequent encounter	S88.019S	Complete traumatic amputation at knee level, unspecified lower leg, sequela
S78.911S	Complete traumatic amputation of right hip and thigh, level unspecified, sequela	S88.021A	Partial traumatic amputation at knee level, right lower leg, initial encounter
S78.912A	Complete traumatic amputation of left hip and thigh, level unspecified, initial encounter	S88.021D	Partial traumatic amputation at knee level, right lower leg, subsequent encounter
S78.912D	Complete traumatic amputation of left hip and thigh, level unspecified, subsequent encounter		

S88.021S	Partial traumatic amputation at knee level, . right lower leg, sequela	Z89.512	Acquired absence of left leg below knee
S88.022A	Partial traumatic amputation at knee level, left lower leg, initial encounter	Z89.519	Acquired absence of unspecified leg below knee
S88.022D	Partial traumatic amputation at knee level, left lower leg, subsequent encounter	Z89.611	Acquired absence of right leg above knee
S88.022S	Partial traumatic amputation at knee level, left lower leg, sequela	Z89.612	Acquired absence of left leg above knee
S88.029A	Partial traumatic amputation at knee level, unspecified lower leg, initial encounter	Z89.619	Acquired absence of unspecified leg above knee
S88.029D	Partial traumatic amputation at knee level, unspecified lower leg, subsequent encounter	Z89.621	Acquired absence of right hip joint
S88.029S	Partial traumatic amputation at knee level, unspecified lower leg, sequela	Z89.622	Acquired absence of left hip joint
S88.911A	Complete traumatic amputation of right lower leg, level unspecified, initial encounter	Z89.629	Acquired absence of unspecified hip joint
S88.911D	Complete traumatic amputation of right lower leg, level unspecified, subsequent encounter		
S88.911S	Complete traumatic amputation of right lower leg, level unspecified, sequela		
S88.912A	Complete traumatic amputation of left lower leg, level unspecified, initial encounter		
S88.912D	Complete traumatic amputation of left lower leg, level unspecified, subsequent encounter		
S88.912S	Complete traumatic amputation of left lower leg, level unspecified, sequela		
S88.919A	Complete traumatic amputation of unspecified lower leg, level unspecified, initial encounter		
S88.919D	Complete traumatic amputation of unspecified lower leg, level unspecified, subsequent encounter		
S88.919S	Complete traumatic amputation of unspecified lower leg, level unspecified, sequela		
S88.921A	Partial traumatic amputation of right lower leg, level unspecified, initial encounter		
S88.921D	Partial traumatic amputation of right lower leg, level unspecified, subsequent encounter		
S88.921S	Partial traumatic amputation of right lower leg, level unspecified, sequela		
S88.922A	Partial traumatic amputation of left lower leg, level unspecified, initial encounter		
S88.922D	Partial traumatic amputation of left lower leg, level unspecified, subsequent encounter		
S88.922S	Partial traumatic amputation of left lower leg, level unspecified, sequela		
S88.929A	Partial traumatic amputation of unspecified lower leg, level unspecified, initial encounter		
S88.929D	Partial traumatic amputation of unspecified lower leg, level unspecified, subsequent encounter		
S88.929S	Partial traumatic amputation of unspecified lower leg, level unspecified, sequela		
Z89.511	Acquired absence of right leg below knee		

Custom Products

HCPCS Codes

E2609

Custom fabricated wheelchair seat cushion, any size.

E2617

Custom fabricated wheelchair back cushion, any size, including any type of mounting hardware.

See diagnosis codes in groups 2 and 3 for E2617.



ROHO® Custom Cushion
(E2609)



Custom Inception Cushion
(E2609)



ROHO® Custom Back, ROHO®
AGILITY® Custom Back Support
(E2617)

Qualifying ICD-10 Diagnosis Codes

A custom fabricated seat cushion (E2609) is covered if criteria (1) and (3) below are met. A custom fabricated back cushion (E2617) is covered if criteria (2) and (3) below are met:

1. Beneficiary meets all of the criteria for a prefabricated skin protection seat cushion or positioning seat cushion (pages 22-30);
2. Beneficiary meets all of the criteria for a prefabricated positioning back cushion (pages 14-21);
3. There is a comprehensive written evaluation by a licensed/certified medical professional, such as a physical therapist (PT) or occupational therapist (OT), which clearly explains why a prefabricated seating system is not sufficient to meet the beneficiary's seating and positioning needs. The PT or OT may have no financial relationship with the supplier.

If a custom fabricated cushion is provided for a beneficiary who does not meet the stated coverage criteria, it will be denied as not reasonable and necessary.

A prefabricated seat cushion, a prefabricated positioning back cushion, or a brand name custom fabricated seat or back cushion which has not received a written coding verification from the Pricing, Data Analysis, and Coding (PDAC) contractor or which does not meet the criteria stated in the Coding Guidelines section will be denied as not reasonable and necessary.



Custom Acta-Back
(E2617)



Custom Acta-Back Deep
(E2617)



Custom Acta-Relief
(E2617)



Custom Acta-Embrace
(E2617)

Diagnosis Codes

B91	Sequelae of poliomyelitis	G36.0	Neuromyelitis optica [Devic]
E75.00	GM2 gangliosidosis, unspecified	G36.1	Acute and subacute hemorrhagic leukoencephalitis [Hurst]
E75.01	Sandhoff disease	G36.8	Other specified acute disseminated demyelination
E75.02	Tay-Sachs disease	G36.9	Acute disseminated demyelination, unspecified
E75.09	Other GM2 gangliosidosis	G37.0	Diffuse sclerosis of central nervous system
E75.10	Unspecified gangliosidosis	G37.1	Central demyelination of corpus callosum
E75.11	Mucopolipidosis IV	G37.2	Central pontine myelinolysis
E75.19	Other gangliosidosis	G37.3	Acute transverse myelitis in demyelinating disease of central nervous system
E75.23	Krabbe disease	G37.4	Subacute necrotizing myelitis of central nervous system
E75.25	Metachromatic leukodystrophy	G37.5	Concentric sclerosis [Balo] of central nervous system
E75.29	Other sphingolipidosis	G37.8	Other specified demyelinating diseases of central nervous system
E75.4	Neuronal ceroid lipofuscinosis	G37.9	Demyelinating disease of central nervous system, unspecified
F84.2	Rett's syndrome	G61.0	Guillain-Barre syndrome
G04.1	Tropical spastic paraplegia	G71.00	Muscular dystrophy, unspecified
G04.89	Other myelitis	G71.01	Duchenne or Becker muscular dystrophy
G10	Huntington's disease	G71.02	Facioscapulohumeral muscular dystrophy
G11.0	Congenital nonprogressive ataxia	G71.09	Other specified muscular dystrophy
G11.1	Early-onset cerebellar ataxia	G71.11	Myotonic muscular dystrophy
G11.2	Late-onset cerebellar ataxia	G71.2	Congenital myopathies
G11.3	Cerebellar ataxia with defective DNA repair	G80.0	Spastic quadriplegic cerebral palsy
G11.4	Hereditary spastic paraplegia	G80.1	Spastic diplegic cerebral palsy
G11.8	Other hereditary ataxias	G80.2	Spastic hemiplegic cerebral palsy
G11.9	Hereditary ataxia, unspecified	G80.3	Athetoid cerebral palsy
G12.0	Infantile spinal muscular atrophy, type I [Werdnig-Hoffman]	G80.4	Ataxic cerebral palsy
G12.1	Other inherited spinal muscular atrophy	G80.8	Other cerebral palsy
G12.20	Motor neuron disease, unspecified	G80.9	Cerebral palsy, unspecified
G12.21	Amyotrophic lateral sclerosis	G81.00	Flaccid hemiplegia affecting unspecified side
G12.23	Primary lateral sclerosis	G81.01	Flaccid hemiplegia affecting right dominant side
G12.24	Familial motor neuron disease	G81.02	Flaccid hemiplegia affecting left dominant side
G12.25	Progressive spinal muscle atrophy	G81.03	Flaccid hemiplegia affecting right nondominant side
G12.29	Other motor neuron disease	G81.04	Flaccid hemiplegia affecting left nondominant side
G12.8	Other spinal muscular atrophies and related syndromes	G81.10	Spastic hemiplegia affecting unspecified side
G12.9	Spinal muscular atrophy, unspecified	G81.11	Spastic hemiplegia affecting right dominant side
G14	Postpolio syndrome	G81.12	Spastic hemiplegia affecting left dominant side
G20	Parkinson's disease	G81.13	Spastic hemiplegia affecting right nondominant side
G21.4	Vascular parkinsonism	G81.14	Spastic hemiplegia affecting left nondominant side
G24.1	Genetic torsion dystonia	G81.90	Hemiplegia, unspecified affecting unspecified side
G30.0	Alzheimer's disease with early onset	G81.91	Hemiplegia, unspecified affecting right dominant side
G30.1	Alzheimer's disease with late onset		
G30.8	Other Alzheimer's disease		
G30.9	Alzheimer's disease, unspecified		
G31.81	Alpers disease		
G31.82	Leigh's disease		
G32.0	Subacute combined degeneration of spinal cord in diseases classified elsewhere		
G32.81	Cerebellar ataxia in diseases classified elsewhere		
G32.89	Other specified degenerative disorders of nervous system in diseases classified elsewhere		
G35	Multiple sclerosis		

G81.92	Hemiplegia, unspecified affecting left dominant side	I69.054	Hemiplegia and hemiparesis following nontraumatic subarachnoid hemorrhage affecting left non-dominant side
G81.93	Hemiplegia, unspecified affecting right nondominant side	I69.059	Hemiplegia and hemiparesis following nontraumatic subarachnoid hemorrhage affecting unspecified side
G81.94	Hemiplegia, unspecified affecting left nondominant side	I69.141	Monoplegia of lower limb following nontraumatic intracerebral hemorrhage affecting right dominant side
G82.20	Paraplegia, unspecified	I69.142	Monoplegia of lower limb following nontraumatic intracerebral hemorrhage affecting left dominant side
G82.21	Paraplegia, complete	I69.143	Monoplegia of lower limb following nontraumatic intracerebral hemorrhage affecting right non-dominant side
G82.22	Paraplegia, incomplete	I69.144	Monoplegia of lower limb following nontraumatic intracerebral hemorrhage affecting left non-dominant side
G82.50	Quadriplegia, unspecified	I69.149	Monoplegia of lower limb following nontraumatic intracerebral hemorrhage affecting unspecified side
G82.51	Quadriplegia, C1-C4 complete	I69.151	Hemiplegia and hemiparesis following nontraumatic intracerebral hemorrhage affecting right dominant side
G82.52	Quadriplegia, C1-C4 incomplete	I69.152	Hemiplegia and hemiparesis following nontraumatic intracerebral hemorrhage affecting left dominant side
G82.53	Quadriplegia, C5-C7 complete	I69.153	Hemiplegia and hemiparesis following nontraumatic intracerebral hemorrhage affecting right non-dominant side
G82.54	Quadriplegia, C5-C7 incomplete	I69.154	Hemiplegia and hemiparesis following nontraumatic intracerebral hemorrhage affecting left non-dominant side
G83.10	Monoplegia of lower limb affecting unspecified side	I69.159	Hemiplegia and hemiparesis following nontraumatic intracerebral hemorrhage affecting unspecified side
G83.11	Monoplegia of lower limb affecting right dominant side	I69.241	Monoplegia of lower limb following other nontraumatic intracranial hemorrhage affecting right dominant side
G83.12	Monoplegia of lower limb affecting left dominant side	I69.242	Monoplegia of lower limb following other nontraumatic intracranial hemorrhage affecting left dominant side
G83.13	Monoplegia of lower limb affecting right nondominant side	I69.243	Monoplegia of lower limb following other nontraumatic intracranial hemorrhage affecting right non-dominant side
G83.14	Monoplegia of lower limb affecting left nondominant side	I69.244	Monoplegia of lower limb following other nontraumatic intracranial hemorrhage affecting left non-dominant side
G93.89	Other specified disorders of brain	I69.249	Monoplegia of lower limb following other nontraumatic intracranial hemorrhage affecting unspecified side
G93.9	Disorder of brain, unspecified	I69.251	Hemiplegia and hemiparesis following other nontraumatic intracranial hemorrhage affecting right dominant side
G94	Other disorders of brain in diseases classified elsewhere	I69.252	Hemiplegia and hemiparesis following other nontraumatic intracranial hemorrhage affecting left dominant side
G95.0	Syringomyelia and syringobulbia	I69.253	Hemiplegia and hemiparesis following other nontraumatic intracranial hemorrhage affecting right non-dominant side
G95.11	Acute infarction of spinal cord (embolic) (nonembolic)		
G95.19	Other vascular myelopathies		
G99.2	Myelopathy in diseases classified elsewhere		
I69.041	Monoplegia of lower limb following nontraumatic subarachnoid hemorrhage affecting right dominant side		
I69.042	Monoplegia of lower limb following nontraumatic subarachnoid hemorrhage affecting left dominant side		
I69.043	Monoplegia of lower limb following nontraumatic subarachnoid hemorrhage affecting right non-dominant side		
I69.044	Monoplegia of lower limb following nontraumatic subarachnoid hemorrhage affecting left non-dominant side		
I69.049	Monoplegia of lower limb following nontraumatic subarachnoid hemorrhage affecting unspecified side		
I69.051	Hemiplegia and hemiparesis following nontraumatic subarachnoid hemorrhage affecting right dominant side		
I69.052	Hemiplegia and hemiparesis following nontraumatic subarachnoid hemorrhage affecting left dominant side		
I69.053	Hemiplegia and hemiparesis following nontraumatic subarachnoid hemorrhage affecting right non-dominant side		

I69.254	Hemiplegia and hemiparesis following other nontraumatic intracranial hemorrhage affecting left non-dominant side	I69.941	Monoplegia of lower limb following unspecified cerebrovascular disease affecting right dominant side
I69.259	Hemiplegia and hemiparesis following other nontraumatic intracranial hemorrhage affecting unspecified side	I69.942	Monoplegia of lower limb following unspecified cerebrovascular disease affecting left dominant side
I69.341	Monoplegia of lower limb following cerebral infarction affecting right dominant side	I69.943	Monoplegia of lower limb following unspecified cerebrovascular disease affecting right non-dominant side
I69.342	Monoplegia of lower limb following cerebral infarction affecting left dominant side	I69.944	Monoplegia of lower limb following unspecified cerebrovascular disease affecting left non-dominant side
I69.343	Monoplegia of lower limb following cerebral infarction affecting right non-dominant side	I69.949	Monoplegia of lower limb following unspecified cerebrovascular disease affecting unspecified side
I69.344	Monoplegia of lower limb following cerebral infarction affecting left non-dominant side	I69.951	Hemiplegia and hemiparesis following unspecified cerebrovascular disease affecting right dominant side
I69.349	Monoplegia of lower limb following cerebral infarction affecting unspecified side	I69.952	Hemiplegia and hemiparesis following unspecified cerebrovascular disease affecting left dominant side
I69.351	Hemiplegia and hemiparesis following cerebral infarction affecting right dominant side	I69.953	Hemiplegia and hemiparesis following unspecified cerebrovascular disease affecting right non-dominant side
I69.352	Hemiplegia and hemiparesis following cerebral infarction affecting left dominant side	I69.954	Hemiplegia and hemiparesis following unspecified cerebrovascular disease affecting left non-dominant side
I69.353	Hemiplegia and hemiparesis following cerebral infarction affecting right non-dominant side	I69.959	Hemiplegia and hemiparesis following unspecified cerebrovascular disease affecting unspecified side
I69.354	Hemiplegia and hemiparesis following cerebral infarction affecting left non-dominant side	L89.130	Pressure ulcer of right lower back, unstageable
I69.359	Hemiplegia and hemiparesis following cerebral infarction affecting unspecified side	L89.131	Pressure ulcer of right lower back, stage 1
I69.841	Monoplegia of lower limb following other cerebrovascular disease affecting right dominant side	L89.132	Pressure ulcer of right lower back, stage 2
I69.842	Monoplegia of lower limb following other cerebrovascular disease affecting left dominant side	L89.133	Pressure ulcer of right lower back, stage 3
I69.843	Monoplegia of lower limb following other cerebrovascular disease affecting right non-dominant side	L89.134	Pressure ulcer of right lower back, stage 4
I69.844	Monoplegia of lower limb following other cerebrovascular disease affecting left non-dominant side	L89.140	Pressure ulcer of left lower back, unstageable
I69.849	Monoplegia of lower limb following other cerebrovascular disease affecting unspecified side	L89.141	Pressure ulcer of left lower back, stage 1
I69.851	Hemiplegia and hemiparesis following other cerebrovascular disease affecting right dominant side	L89.142	Pressure ulcer of left lower back, stage 2
I69.852	Hemiplegia and hemiparesis following other cerebrovascular disease affecting left dominant side	L89.143	Pressure ulcer of left lower back, stage 3
I69.853	Hemiplegia and hemiparesis following other cerebrovascular disease affecting right non-dominant side	L89.144	Pressure ulcer of left lower back, stage 4
I69.854	Hemiplegia and hemiparesis following other cerebrovascular disease affecting left non-dominant side	L89.150	Pressure ulcer of sacral region, unstageable
I69.859	Hemiplegia and hemiparesis following other cerebrovascular disease affecting unspecified side	L89.151	Pressure ulcer of sacral region, stage 1
		L89.152	Pressure ulcer of sacral region, stage 2
		L89.153	Pressure ulcer of sacral region, stage 3
		L89.154	Pressure ulcer of sacral region, stage 4
		L89.200	Pressure ulcer of unspecified hip, unstageable
		L89.201	Pressure ulcer of unspecified hip, stage 1
		L89.202	Pressure ulcer of unspecified hip, stage 2
		L89.203	Pressure ulcer of unspecified hip, stage 3
		L89.204	Pressure ulcer of unspecified hip, stage 4
		L89.210	Pressure ulcer of right hip, unstageable
		L89.211	Pressure ulcer of right hip, stage 1
		L89.212	Pressure ulcer of right hip, stage 2
		L89.213	Pressure ulcer of right hip, stage 3

L89.214	Pressure ulcer of right hip, stage 4	Q78.0	Osteogenesis imperfecta
L89.220	Pressure ulcer of left hip, unstageable	S78.011A	Complete traumatic amputation at right hip joint, initial encounter
L89.221	Pressure ulcer of left hip, stage 1	S78.011D	Complete traumatic amputation at right hip joint, subsequent encounter
L89.222	Pressure ulcer of left hip, stage 2	S78.011S	Complete traumatic amputation at right hip joint, sequela
L89.223	Pressure ulcer of left hip, stage 3	S78.012A	Complete traumatic amputation at left hip joint, initial encounter
L89.224	Pressure ulcer of left hip, stage 4	S78.012D	Complete traumatic amputation at left hip joint, subsequent encounter
L89.300	Pressure ulcer of unspecified buttock, unstageable	S78.012S	Complete traumatic amputation at left hip joint, sequela
L89.301	Pressure ulcer of unspecified buttock, stage 1	S78.019A	Complete traumatic amputation at unspecified hip joint, initial encounter
L89.302	Pressure ulcer of unspecified buttock, stage 2	S78.019D	Complete traumatic amputation at unspecified hip joint, subsequent encounter
L89.303	Pressure ulcer of unspecified buttock, stage 3	S78.019S	Complete traumatic amputation at unspecified hip joint, sequela
L89.304	Pressure ulcer of unspecified buttock, stage 4	S78.021A	Partial traumatic amputation at right hip joint, initial encounter
L89.310	Pressure ulcer of right buttock, unstageable	S78.021D	Partial traumatic amputation at right hip joint, subsequent encounter
L89.311	Pressure ulcer of right buttock, stage 1	S78.021S	Partial traumatic amputation at right hip joint, sequela
L89.312	Pressure ulcer of right buttock, stage 2	S78.022A	Partial traumatic amputation at left hip joint, initial encounter
L89.313	Pressure ulcer of right buttock, stage 3	S78.022D	Partial traumatic amputation at left hip joint, subsequent encounter
L89.314	Pressure ulcer of right buttock, stage 4	S78.022S	Partial traumatic amputation at left hip joint, sequela
L89.320	Pressure ulcer of left buttock, unstageable	S78.029A	Partial traumatic amputation at unspecified hip joint, initial encounter
L89.321	Pressure ulcer of left buttock, stage 1	S78.029D	Partial traumatic amputation at unspecified hip joint, subsequent encounter
L89.322	Pressure ulcer of left buttock, stage 2	S78.029S	Partial traumatic amputation at unspecified hip joint, sequela
L89.323	Pressure ulcer of left buttock, stage 3	S78.111A	Complete traumatic amputation at level between right hip and knee, initial encounter
L89.324	Pressure ulcer of left buttock, stage 4	S78.111D	Complete traumatic amputation at level between right hip and knee, subsequent encounter
L89.41	Pressure ulcer of contiguous site of back, buttock and hip, stage 1	S78.111S	Complete traumatic amputation at level between right hip and knee, sequela
L89.42	Pressure ulcer of contiguous site of back, buttock and hip, stage 2	S78.112A	Complete traumatic amputation at level between left hip and knee, initial encounter
L89.43	Pressure ulcer of contiguous site of back, buttock and hip, stage 3	S78.112D	Complete traumatic amputation at level between left hip and knee, subsequent encounter
L89.44	Pressure ulcer of contiguous site of back, buttock and hip, stage 4	S78.112S	Complete traumatic amputation at level between left hip and knee, sequela
L89.45	Pressure ulcer of contiguous site of back, buttock and hip, unstageable	S78.119A	Complete traumatic amputation at level between unspecified hip and knee, initial encounter
M62.3	Immobility syndrome (paraplegic)	S78.119D	Complete traumatic amputation at level between unspecified hip and knee, subsequent encounter
M62.89	Other specified disorders of muscle		
Q05.0	Cervical spina bifida with hydrocephalus		
Q05.1	Thoracic spina bifida with hydrocephalus		
Q05.2	Lumbar spina bifida with hydrocephalus		
Q05.3	Sacral spina bifida with hydrocephalus		
Q05.4	Unspecified spina bifida with hydrocephalus		
Q05.5	Cervical spina bifida without hydrocephalus		
Q05.6	Thoracic spina bifida without hydrocephalus		
Q05.7	Lumbar spina bifida without hydrocephalus		
Q05.8	Sacral spina bifida without hydrocephalus		
Q05.9	Spina bifida, unspecified		
Q07.00	Arnold-Chiari syndrome without spina bifida or hydrocephalus		
Q07.01	Arnold-Chiari syndrome with spina bifida		
Q07.02	Arnold-Chiari syndrome with hydrocephalus		
Q07.03	Arnold-Chiari syndrome with spina bifida and hydrocephalus		
Q67.8	Other congenital deformities of chest		
Q68.1	Congenital deformity of finger(s) and hand		
Q74.3	Arthrogryposis multiplex congenita		

S78.119S	Complete traumatic amputation at level between unspecified hip and knee, sequela	S78.922S	Partial traumatic amputation of left hip and thigh, level unspecified, sequela
S78.121A	Partial traumatic amputation at level between right hip and knee, initial encounter	S78.929A	Partial traumatic amputation of unspecified hip and thigh, level unspecified, initial encounter
S78.121D	Partial traumatic amputation at level between right hip and knee, subsequent encounter	S78.929D	Partial traumatic amputation of unspecified hip and thigh, level unspecified, subsequent encounter
S78.121S	Partial traumatic amputation at level between right hip and knee, sequela	S78.929S	Partial traumatic amputation of unspecified hip and thigh, level unspecified, sequela
S78.122A	Partial traumatic amputation at level between left hip and knee, initial encounter	S88.011A	Complete traumatic amputation at knee level, right lower leg, initial encounter
S78.122D	Partial traumatic amputation at level between left hip and knee, subsequent encounter	S88.011D	Complete traumatic amputation at knee level, right lower leg, subsequent encounter
S78.122S	Partial traumatic amputation at level between left hip and knee, sequela	S88.011S	Complete traumatic amputation at knee level, right lower leg, sequela
S78.129A	Partial traumatic amputation at level between unspecified hip and knee, initial encounter	S88.012A	Complete traumatic amputation at knee level, left lower leg, initial encounter
S78.129D	Partial traumatic amputation at level between unspecified hip and knee, subsequent encounter	S88.012D	Complete traumatic amputation at knee level, left lower leg, subsequent encounter
S78.129S	Partial traumatic amputation at level between unspecified hip and knee, sequela	S88.012S	Complete traumatic amputation at knee level, left lower leg, sequela
S78.911A	Complete traumatic amputation of right hip and thigh, level unspecified, initial encounter	S88.019A	Complete traumatic amputation at knee level, unspecified lower leg, initial encounter
S78.911D	Complete traumatic amputation of right hip and thigh, level unspecified, subsequent encounter	S88.019D	Complete traumatic amputation at knee level, unspecified lower leg, subsequent encounter
S78.911S	Complete traumatic amputation of right hip and thigh, level unspecified, sequela	S88.019S	Complete traumatic amputation at knee level, unspecified lower leg, sequela
S78.912A	Complete traumatic amputation of left hip and thigh, level unspecified, initial encounter	S88.021A	Partial traumatic amputation at knee level, right lower leg, initial encounter
S78.912D	Complete traumatic amputation of left hip and thigh, level unspecified, subsequent encounter	S88.021D	Partial traumatic amputation at knee level, right lower leg, subsequent encounter
S78.912S	Complete traumatic amputation of left hip and thigh, level unspecified, sequela	S88.021S	Partial traumatic amputation at knee level, right lower leg, sequela
S78.919A	Complete traumatic amputation of unspecified hip and thigh, level unspecified, initial encounter	S88.022A	Partial traumatic amputation at knee level, left lower leg, initial encounter
S78.919D	Complete traumatic amputation of unspecified hip and thigh, level unspecified, subsequent encounter	S88.022D	Partial traumatic amputation at knee level, left lower leg, subsequent encounter
S78.919S	Complete traumatic amputation of unspecified hip and thigh, level unspecified, sequela	S88.022S	Partial traumatic amputation at knee level, left lower leg, sequela
S78.921A	Partial traumatic amputation of right hip and thigh, level unspecified, initial encounter	S88.029A	Partial traumatic amputation at knee level, unspecified lower leg, initial encounter
S78.921D	Partial traumatic amputation of right hip and thigh, level unspecified, subsequent encounter	S88.029D	Partial traumatic amputation at knee level, unspecified lower leg, subsequent encounter
S78.921S	Partial traumatic amputation of right hip and thigh, level unspecified, sequela	S88.029S	Partial traumatic amputation at knee level, unspecified lower leg, sequela
S78.922A	Partial traumatic amputation of left hip and thigh, level unspecified, initial encounter	S88.911A	Complete traumatic amputation of right lower leg, level unspecified, initial encounter
S78.922D	Partial traumatic amputation of left hip and thigh, level unspecified, subsequent encounter	S88.911D	Complete traumatic amputation of right lower leg, level unspecified, subsequent encounter
		S88.911S	Complete traumatic amputation of right lower leg, level unspecified, sequela

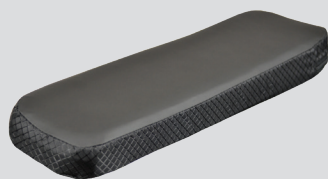
S88.912A	Complete traumatic amputation of left lower leg, level unspecified, initial encounter
S88.912D	Complete traumatic amputation of left lower leg, level unspecified, subsequent encounter
S88.912S	Complete traumatic amputation of left lower leg, level unspecified, sequela
S88.919A	Complete traumatic amputation of unspecified lower leg, level unspecified, initial encounter
S88.919D	Complete traumatic amputation of unspecified lower leg, level unspecified, subsequent encounter
S88.919S	Complete traumatic amputation of unspecified lower leg, level unspecified, sequela
S88.921A	Partial traumatic amputation of right lower leg, level unspecified, initial encounter
S88.921D	Partial traumatic amputation of right lower leg, level unspecified, subsequent encounter
S88.921S	Partial traumatic amputation of right lower leg, level unspecified, sequela
S88.922A	Partial traumatic amputation of left lower leg, level unspecified, initial encounter
S88.922D	Partial traumatic amputation of left lower leg, level unspecified, subsequent encounter
S88.922S	Partial traumatic amputation of left lower leg, level unspecified, sequela
S88.929A	Partial traumatic amputation of unspecified lower leg, level unspecified, initial encounter
S88.929D	Partial traumatic amputation of unspecified lower leg, level unspecified, subsequent encounter
S88.929S	Partial traumatic amputation of unspecified lower leg, level unspecified, sequela
Z89.511	Acquired absence of right leg below knee
Z89.512	Acquired absence of left leg below knee
Z89.519	Acquired absence of unspecified leg below knee
Z89.611	Acquired absence of right leg above knee
Z89.612	Acquired absence of left leg above knee
Z89.619	Acquired absence of unspecified leg above knee
Z89.621	Acquired absence of right hip joint
Z89.622	Acquired absence of left hip joint
Z89.629	Acquired absence of unspecified hip joint

Accessories

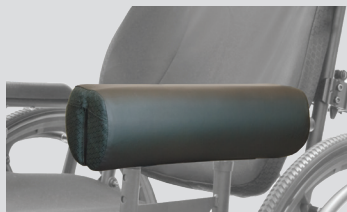
HCPSC Codes

K0019	Arm pad, replacement only	E0960	Wheelchair accessory, shoulder harness/straps or chest strap, including any type mounting hardware
K0108	Wheelchair component or accessory, not otherwise specified	E0978	Wheelchair accessory, positioning belt/safety belt/pelvic strap
E0950	Wheelchair accessory, tray	E0992	Manual wheelchair accessory, solid seat insert
E0953	Wheelchair accessory, lateral thigh or knee support, any type including fixed mounting hardware	E0995	Wheelchair accessory, calf rest/pad, replacement only
E0954	Wheelchair accessory, foot box, any type, includes attachment and mounting hardware	E1020	Residual limb support system for wheelchair
E0955	Wheelchair accessory, headrest, cushioned, any type, including fixed mounting hardware	E1028	Wheelchair accessory, manual swingaway, retractable or removing mounting hardware
E0956	Wheelchair accessory, lateral trunk or hip support, any type, including fixed mounting hardware	E1399	Durable medical equipment, miscellaneous
E0957	Wheelchair accessory, medial thigh support, any type including fixed mounting hardware.	E2209	Accessory, arm trough, with or without hang support
		E2231	Solid Seat Support Base

Qualifying Permobil Products



Arm Rest Pad Replacement
(K0019)



Lateral Rolls
(K0108)



Durasoft Full Lap Tray
(E0950)



Durasoft Half Lap Tray
(E0950)



BodiLink® Lateral Pelvic/Thigh
Support Pads
(E0953)



Comfort Foot Single
(E0954)



Comfort Foot Double
(E0954 x2)



BodiLink® Head Support Pads
(E0955)



BodiLink® Lateral Trunk
Support Pads
(E0956)



BodiLink® Medial Knee/Thigh
Support Pads
(E0957)



Bodypoint® Chest Hardware
(E0960)



Bodypoint® Hip Belt
(E0978)



Rigid Insert
(E0992)



Calf Pad
(E0995)



Quick Release Amp Support
(E1020)



Swing-Away Amp Support
(E1020)



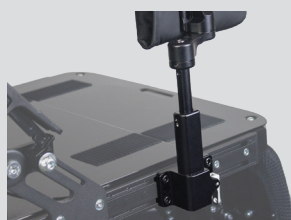
EAD Hardware
(E1028)



BodiLink® Head Support
Removable Hardware
(E1028)



BodiLink® Lateral Trunk Support
Swing-Away Hardware
(E1028)



BodiLink® Lateral Pelvic/Thigh
Support Removable Hardware
(E1028)



BodiLink® Medial Knee/Thigh
Support Swing-Away Hardware
(E1028)



Gait Belt
(E1399)



Molded Arm
(E2209)



COMFORT ARM® Support
(E2209)



Removable Solid Seat Pan
(E2231)

Qualifying ICD-10 Diagnosis Conditions and Codes

For the items addressed in this LCD, the “reasonable and necessary” criteria, based on Social Security Act §1862(a)(1)(A) provisions, are defined by the following coverage indications, limitations and/or medical necessity. Options and accessories for wheelchairs are covered if the beneficiary has a wheelchair that meets Medicare coverage criteria and the option/accessory itself is medically necessary. Coverage criteria for specific items are described below.

If these criteria are not met, the item will be denied as not reasonable and necessary.

Arm of Chair:

Adjustable arm height option (E0973, K0017, K0018, K0020) is covered if the beneficiary requires an arm height that is different from that available using

nonadjustable arms and the beneficiary spends at least 2 hours per day in the wheelchair.

An arm trough (E2209) is covered if the beneficiary has quadriplegia, hemiplegia, or uncontrolled arm movements.

Footrest/Legrest:

Elevating legrests (E0990, K0046, K0047, K0053, K0195) are covered if:

1. The beneficiary has a musculoskeletal condition or the presence of a cast or brace which prevents 90 degree flexion at the knee; or
2. The beneficiary has significant edema of the lower extremities that requires an elevating legrest; or
3. The beneficiary meets the criteria for and has a reclining back on the wheelchair.

Other Power Wheelchair Accessories:

An electronic interface (E2351) to allow a speech generating device to be operated by the power wheelchair control interface is covered if the beneficiary has a covered speech generating device. (Refer to the Speech Generating Devices LCD for details.)

Miscellaneous Accessories:

A safety belt/pelvic strap (E0978) is covered if the beneficiary has weak upper body muscles, upper body instability or muscle spasticity which requires use of this item for proper positioning.

One example (not all-inclusive) of a covered indication for swingaway, retractable, or removable hardware (E1028) would be to move the component out of the way so that a beneficiary can perform a slide transfer to a chair or bed.

Medicare Codes

Since U.S. Medicare coding is subject to change, the provider should always confirm the HCPCS code and coverage criteria as part of the client assessment process. For coverage criteria in other countries, consult your local Permobil distributor.

© 2020 Permobil

Permobil has policy of continual product improvement and reserves the right to amend this document. The current version of this document is available at permobil.com.

Language in the piece was taken directly from The Centers for Medicare & Medicaid Services, Local Coverage Determination (LCD): Wheelchair Seating (L33312), 2020.

The following are trademarks and registered trademarks of Permobil:

ACTA-BACK®, ACTA-EMBRACE®, AGILITY®, AirLITE®, BodiLink®, COMFORT ARM®, CONTOUR SELECT®, DRY FLOATATION®, ELEMENTS®, ENHANCER®, HIGH PROFILE®, Hybrid Elite®, Hybrid Elite SR™, INCREDIBACK®, LOW PROFILE®, MID PROFILE™, MOSAIC®, nexus SPIRIT®, QUADTRO SELECT®, ROHO®, Sensor Ready™, and Smart Check®.

Vicar® is a registered trademark of Vicair.

Bodypoint® is a registered trademark of Bodypoint.

Rev. 10/20, Print 10/20