

NOVIKBLOCK™ INSTALLATION GUIDE

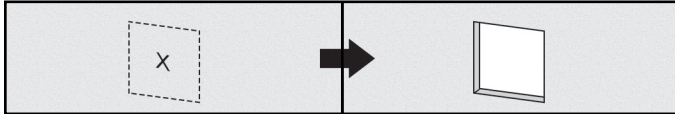
FRANÇAIS
AU VERSO

INSTALLATION STEPS (IMAGES CAN BE DIFFERENT THAN THE ACTUAL PRODUCT)

CAUTION: VERIFY WITH LOCAL CODE OFFICIALS AND THE CURRENT BUILDING CODE IN ORDER TO IDENTIFY THE REQUIREMENTS FOR THE VARIOUS OUTLET & MOUNTING BLOCK TYPES BEFORE BEGINNING THE INSTALLATION.

1-First, locate the desired position of the mounting block on wall and when it's necessary, cut the required opening. To create opening, use the base as a guide. Mark the inside edges of the base on the exterior wall. Once edges are marked properly cut the hole (Figure A).

Figure A




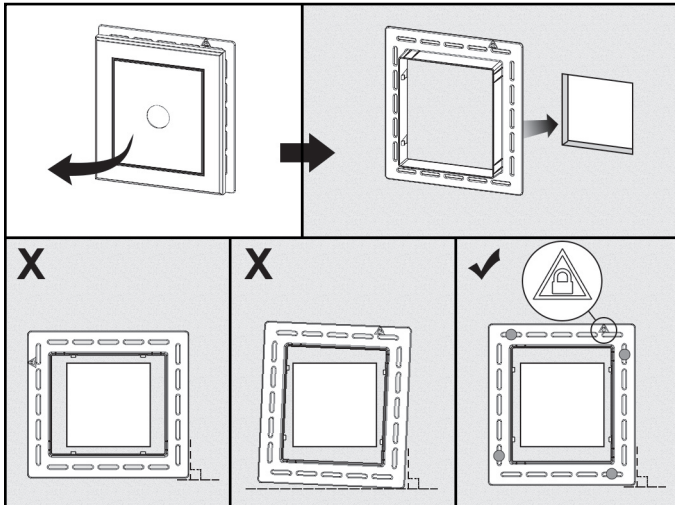
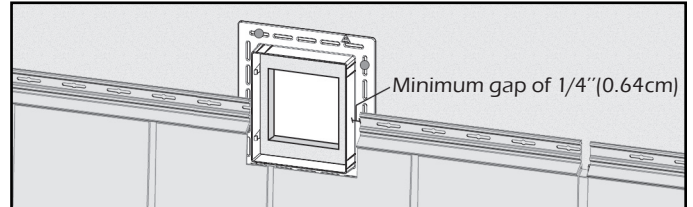
2-Remove the front cover of the two piece block and place the base over the opening. Make sure that the base is level and square, and the symbol  that indicates the "Top/Haut" is in the upward position as per the model below. Attach the base on wall with a minimum of 4 fasteners. Always use non-corrosive nails or screws that have a head of 0.4"(1cm) in diameter and a body of 0.150"(0.38cm) in diameter and penetrate a minimum of 1 1/4"(3.18cm) into a solid surface (Figure B). To ensure maximum watertight installation, apply sealant between the wall and the base as needed.

Figure B



3-Install the siding as per manufacturer's instructions. Make sure to leave a 1/4"(0.64cm) gap between the siding and the base for the siding expansion/contraction movement (Figure C).

Figure C



4-Attach front cover onto the base ensuring the symbols on the two components line up (Figure D). Pressure fit the front base to the desired depth setting for siding thickness being used. Three positions are available: 1 1/4"(3.18cm), 1"(2.54cm) and 3/4"(1.91cm). (Figure E)

Figure D

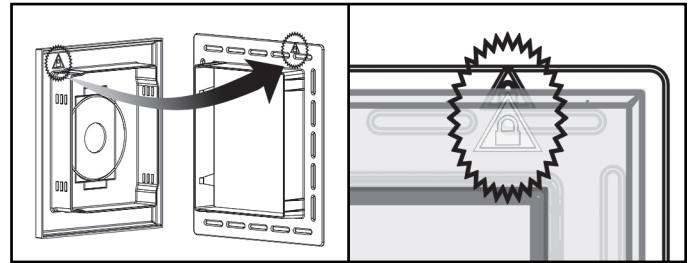
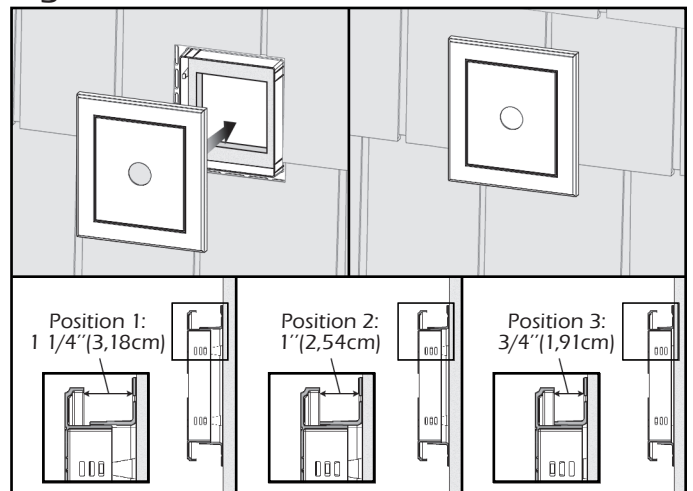


Figure E



Note: Do not attach accessories directly onto mounting blocks. The fasteners must be attached to a solid surface.