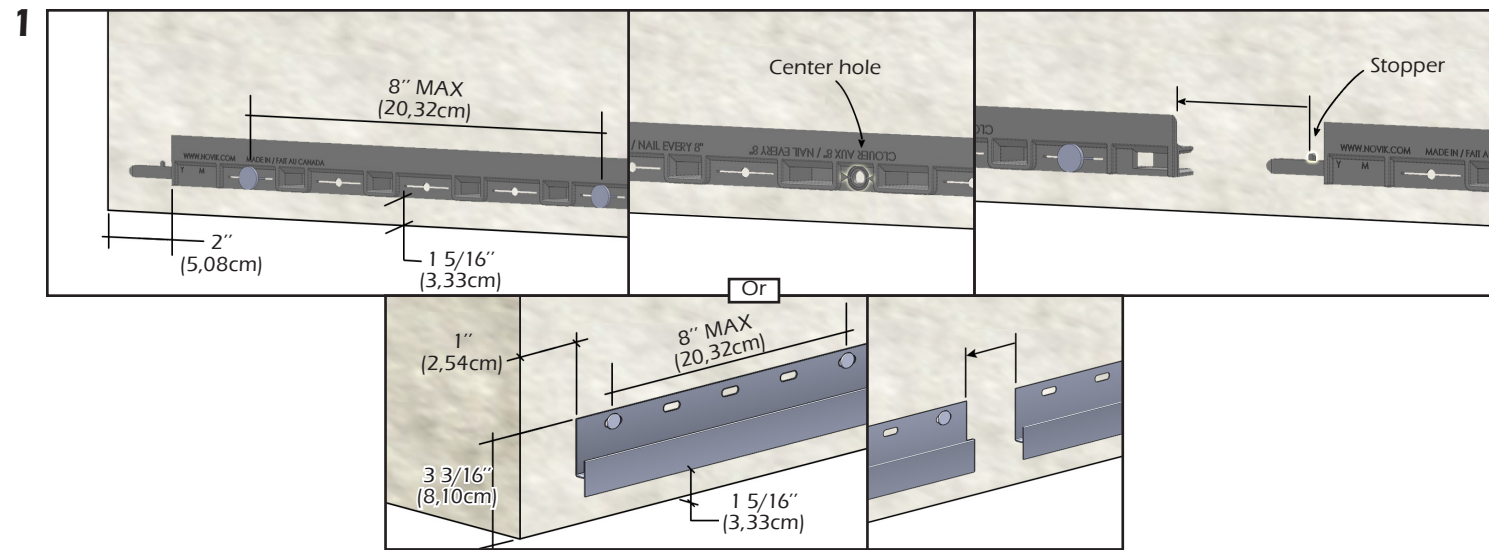


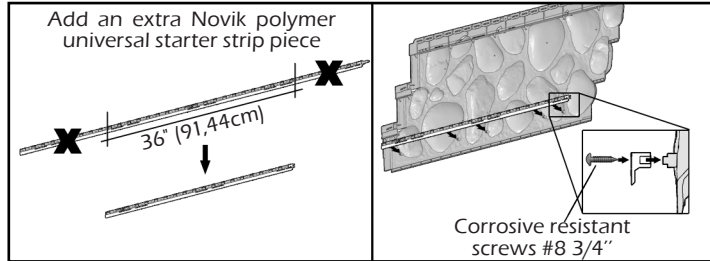
NOVIKSTONE™ RR - RIVER ROCK SUMMARY INSTALLATION GUIDE

CAUTION: ALWAYS INSTALL PRODUCT FROM LEFT TO RIGHT AND REMEMBER THAT POLYMER UNDERGOES EXPANSION/CONTRACTION DUE TO TEMPERATURE VARIATIONS. FOR A BETTER LOOK WE RECOMMEND TO INSTALL PANELS ON FLAT SURFACES (EX: PLYWOOD PANELS OR OSB PANELS). IF PANELS ARE INSTALLED ON A WALL WITH FURRINGS, FURRING STRIPS MUST BE INSTALLED OBLIQUELY AND SPACED BY 8" (20,32CM).

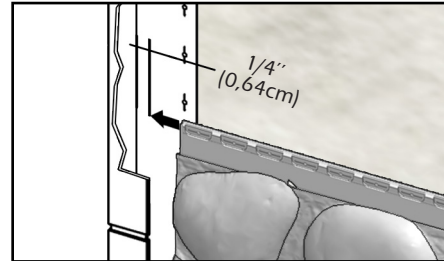
FRANÇAIS
AU VERSO



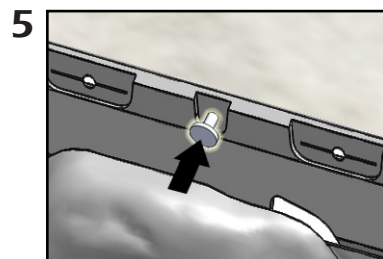
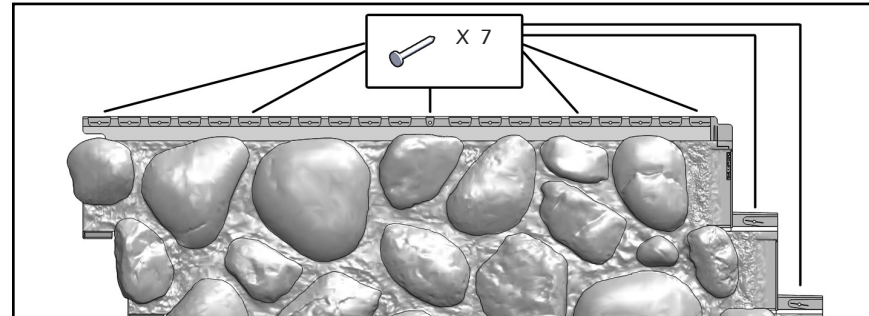
2 Important - Required on first rows' panels only



3 When used with Onepiece Trim 2"

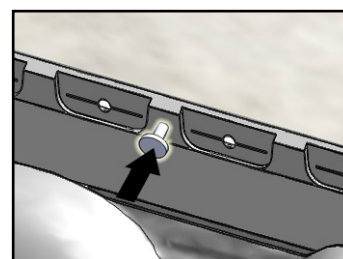
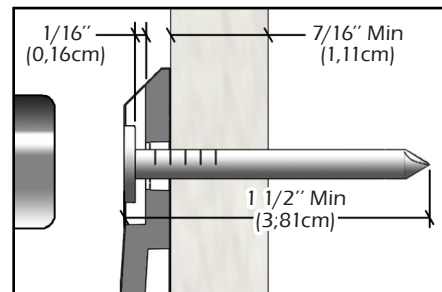


4 For full length panel

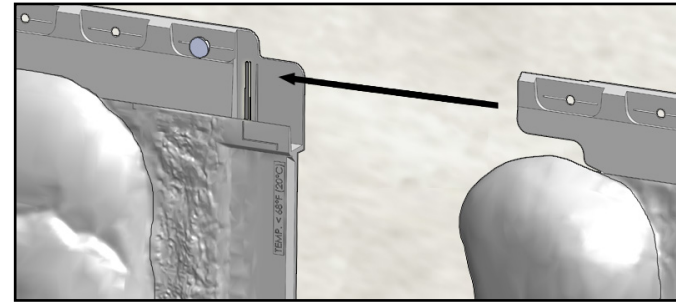


Block each panel at its center

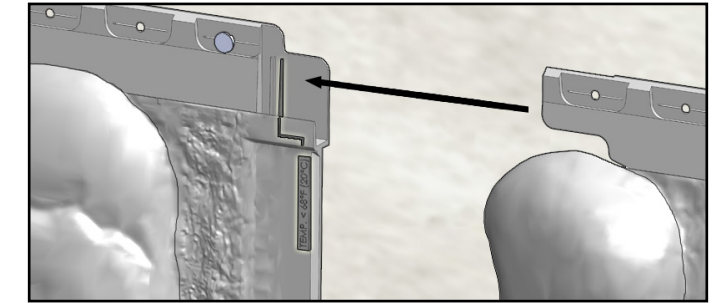
For each nail



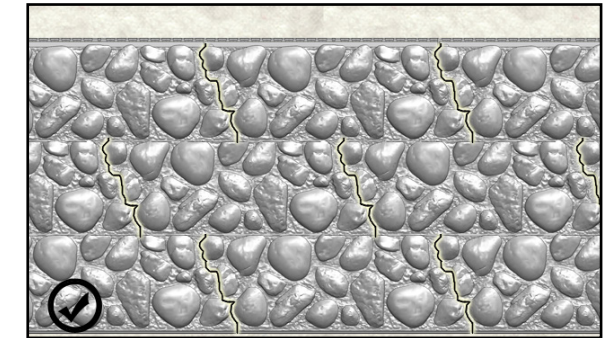
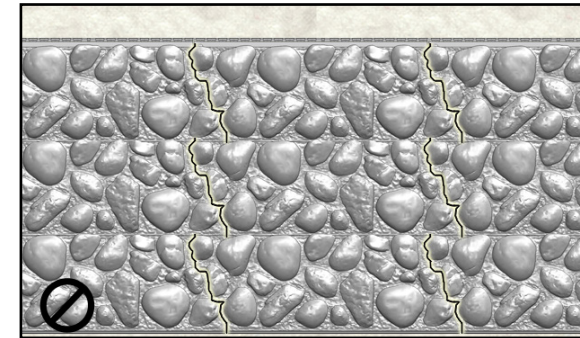
6 Installation when outdoor temperature is above 68°F(20°C). Press against big line.



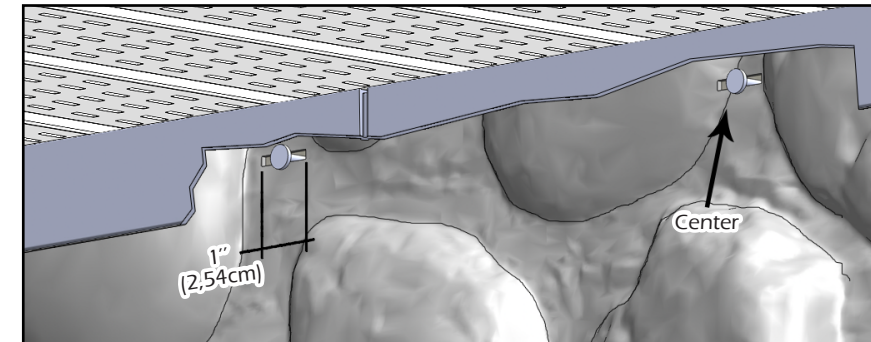
Installation when outdoor temperature is below 68°F(20°C). Stop at the small line.



7 Alternate the joints between rows



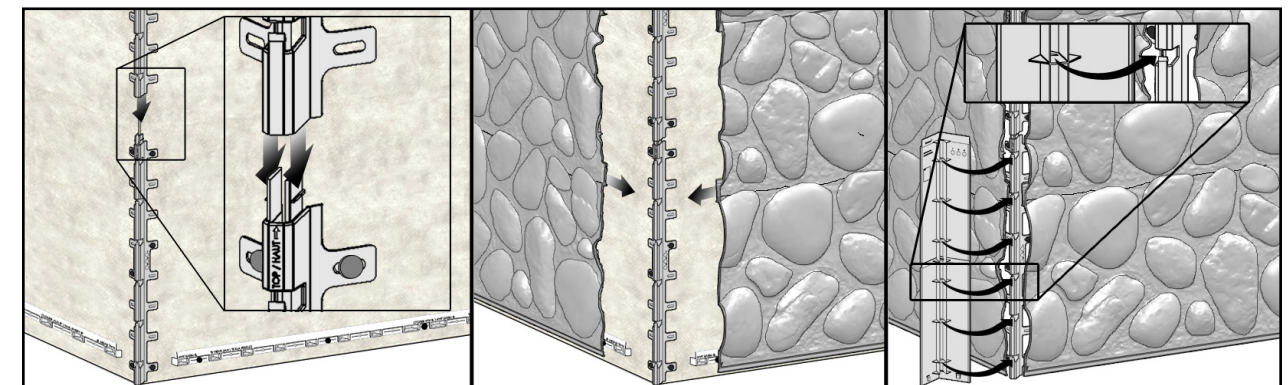
8



If you need to attach the siding in an area other than the installation hole, create a 1" (2,54 cm) long slot to allow nailing. Always nail in the middle of the slot.

9

INSTALLATION WITH NOVIK CORNER 3"

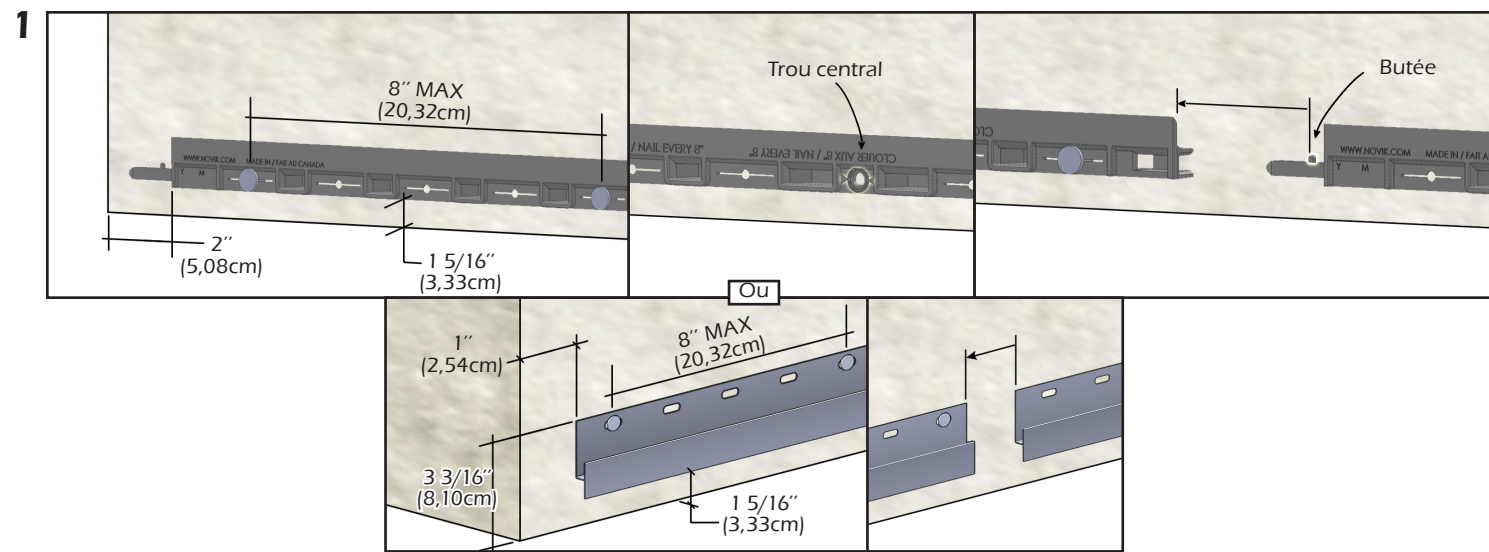


NOVIKSTONE^{MC} RR - PIERRES DE RIVIÈRE

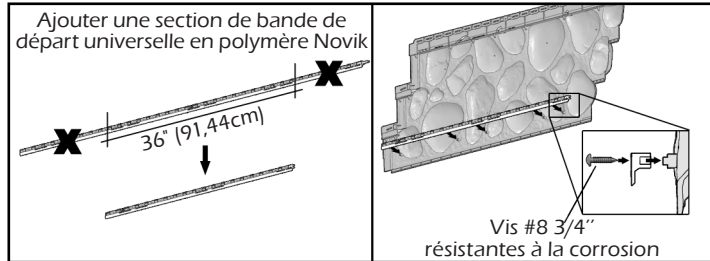
GUIDE D'INSTALLATION SOMMAIRE

ATTENTION: TOUJOURS INSTALLER LE PRODUIT DE LA GAUCHE VERS LA DROITE ET NE JAMAIS OUBLIER QUE LES POLYMÈRES SUBISSENT DE L'EXPANSION/CONTRACTION DUES AUX VARIATIONS DE TEMPÉRATURE. POUR UNE MEILLEURE APPARENCE, NOUS RECOMMANDONS D'INSTALLER LES PANNEAUX SUR DES SURFACES PLANES (EX: PANNEAUX DE CONTRE-PLAQUÉ OU OSB). SI INSTALLER SUR UN MUR LATTÉ, INSTALLER LES LATTES À L'OBLIQUE ET AUX 8" (20,32CM).

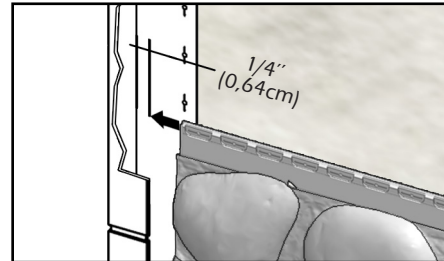
ENGLISH ON REVERSE



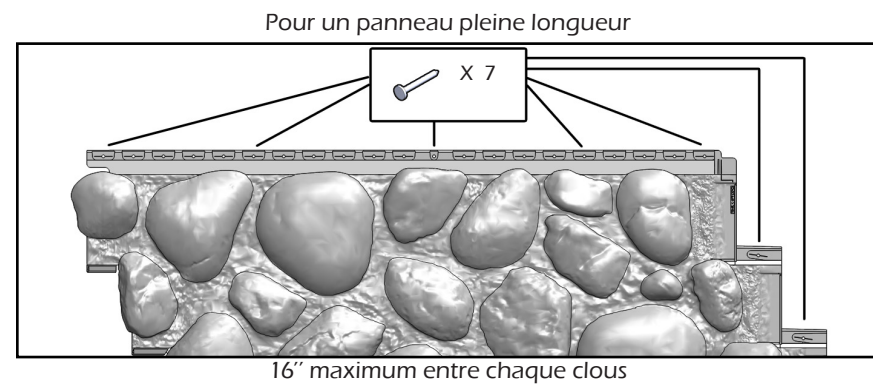
2 Important - Requis pour les panneaux des premières rangées seulement



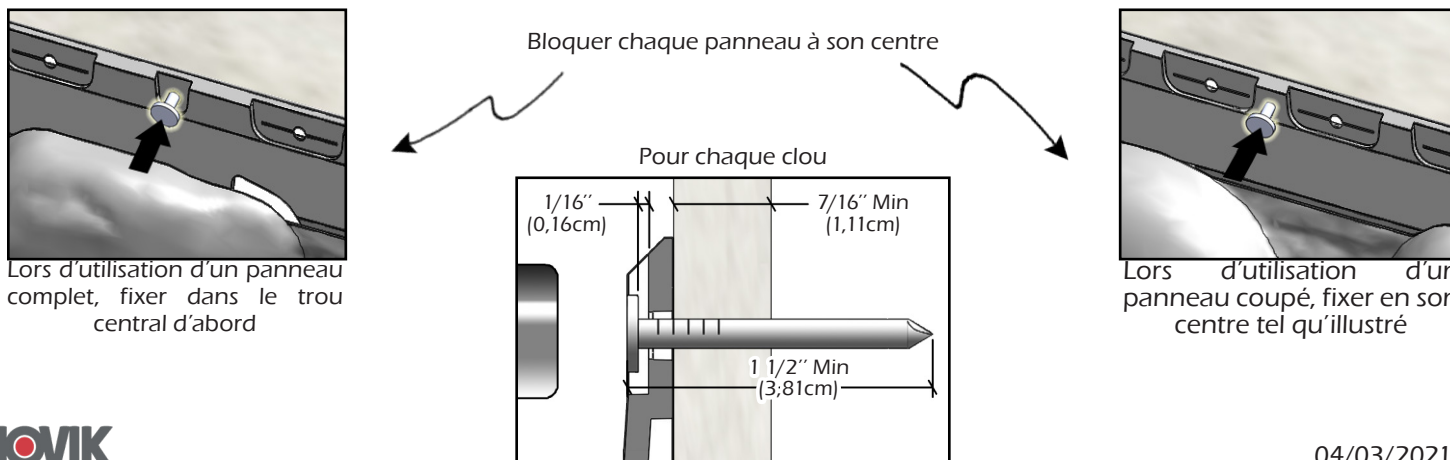
3 Lors d'utilisation de la moulure 1 pièce 2"



4

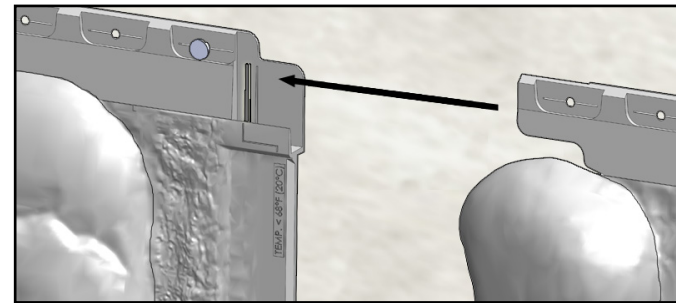


5

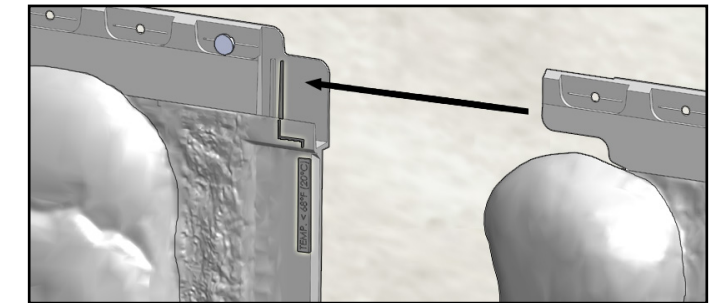


6

Installation à une température extérieure supérieure à 68°F(20°C). Arrêter à la grosse ligne.

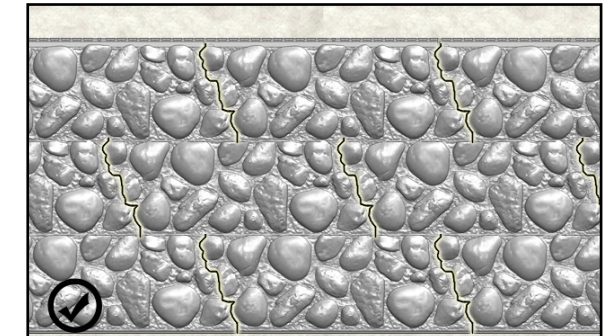
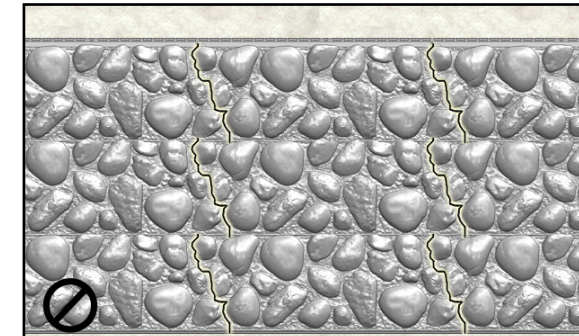


Installation à une température extérieure inférieure à 68°F(20°C). Arrêter à la petite ligne.

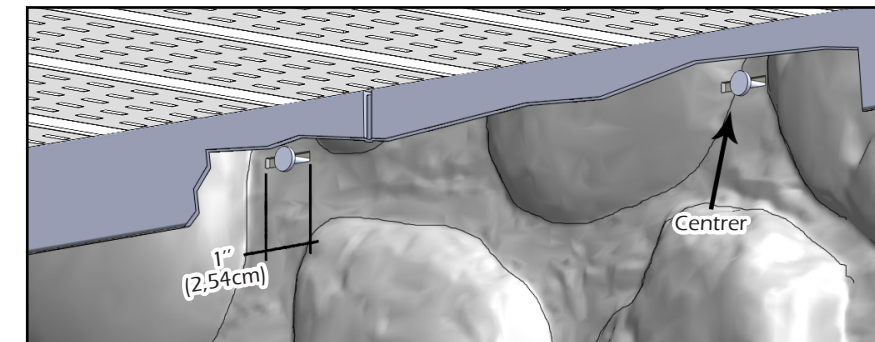


7

Alterner les joints entre les rangées



8



Si vous devez fixer les panneaux dans un endroit autre que dans les trous de fixation, faire une fente de 1"(2,54cm) pour permettre de clouer. Toujours clouer au centre de la fente.

9

INSTALLATION AVEC DES COINS 3" NOVIK

