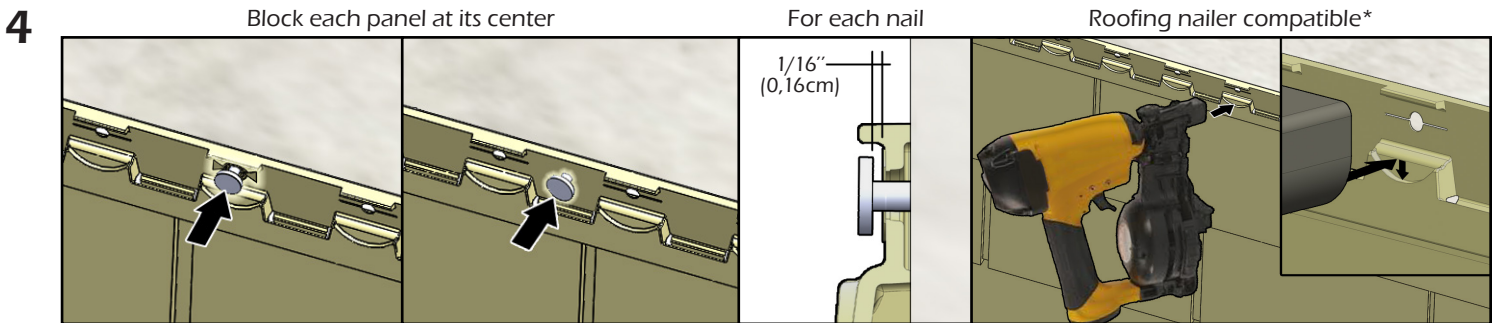
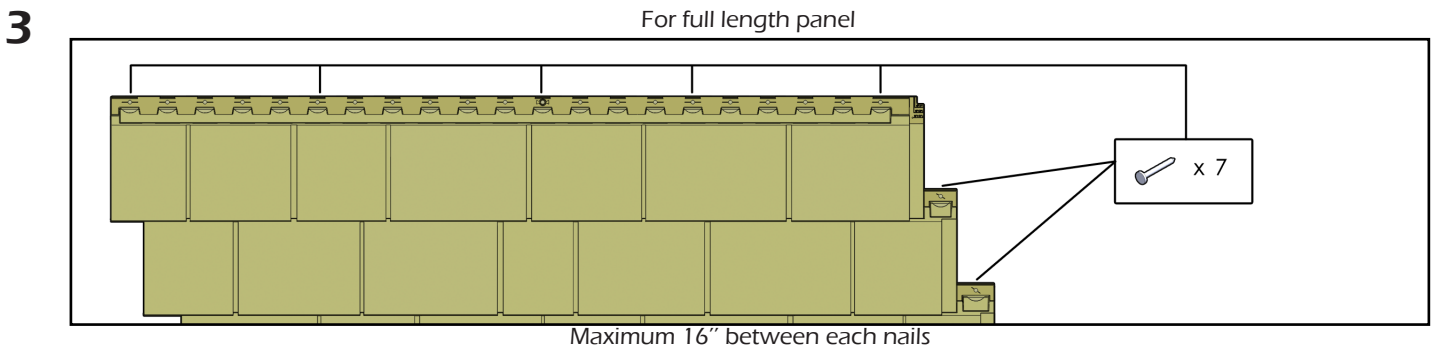
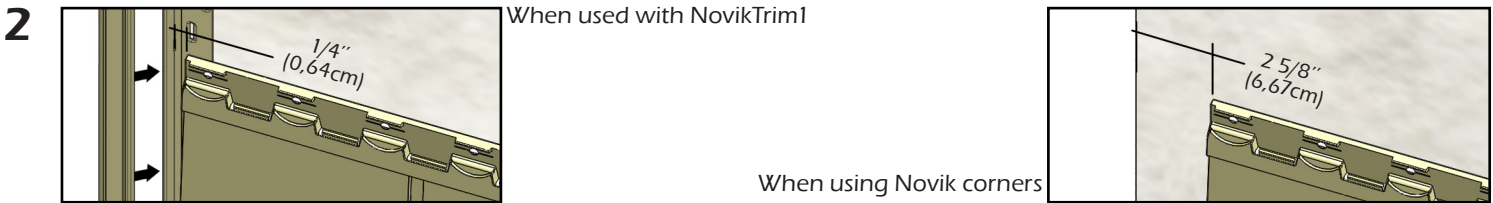
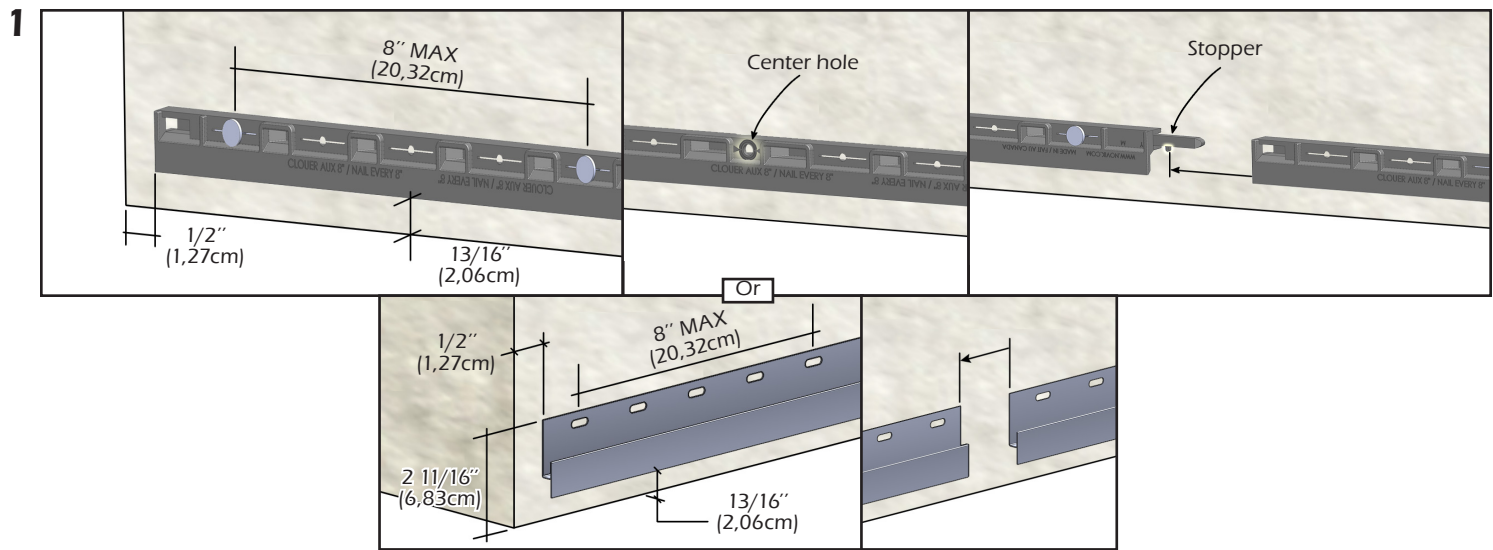


NOVIKSHAKE® NP - NORTHERN PERFECTION  
SUMMARY INSTALLATION GUIDE

CAUTION: ALWAYS INSTALL PRODUCT FROM LEFT TO RIGHT AND REMEMBER THAT POLYMER UNDERGOES EXPANSION/CONTRACTION DUE TO TEMPERATURE VARIATIONS. FOR A BETTER LOOK WE RECOMMEND TO INSTALL PANELS ON FLAT SURFACES (EX: PLYWOOD PANELS OR OSB PANELS). IF PANELS ARE INSTALLED ON A WALL WITH FURRINGS, FURRING STRIPS MUST BE INSTALLED ON A 45° ANGLE AND SPACED BY 8" (20,32CM).



When installing a full panel, nail in the center hole first. When installing a cut panel, nail in its center as shown. For each nail, leave a gap between nail head and panel. When using a roofing nailer, adjust its tip at the highest position and the air pressure according to the substrate in order to leave the required gap.

\* Roofing nailer as Bostitch RN46 and Hitachi NV45.

