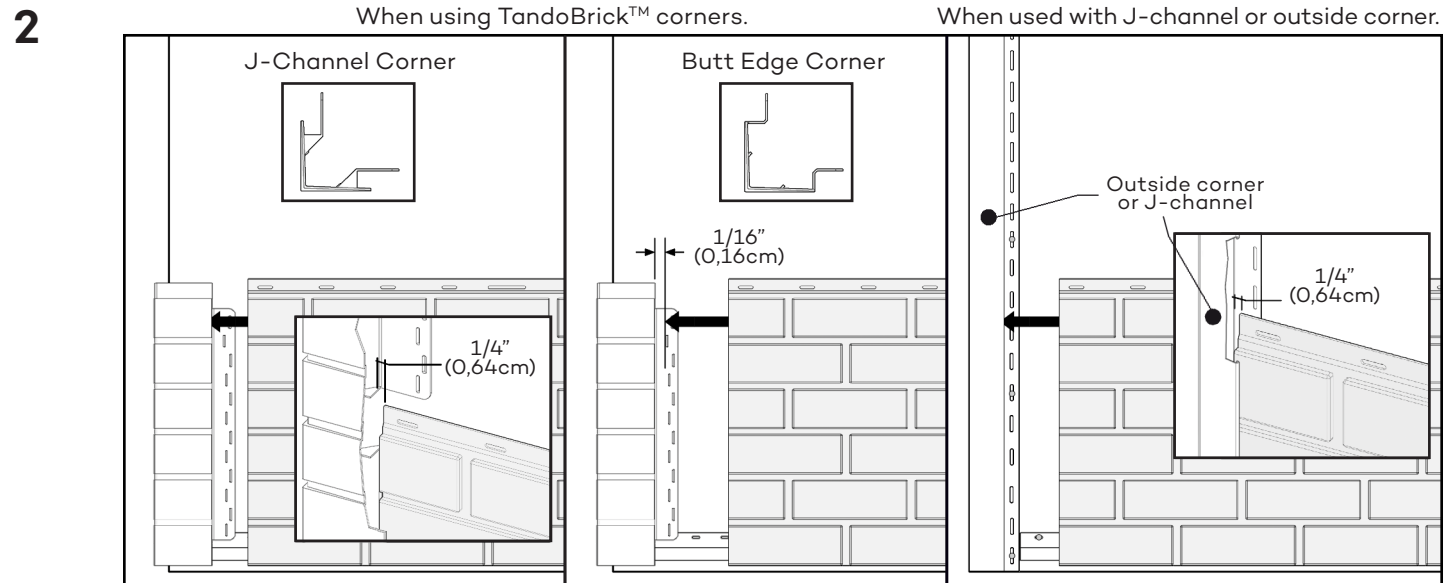
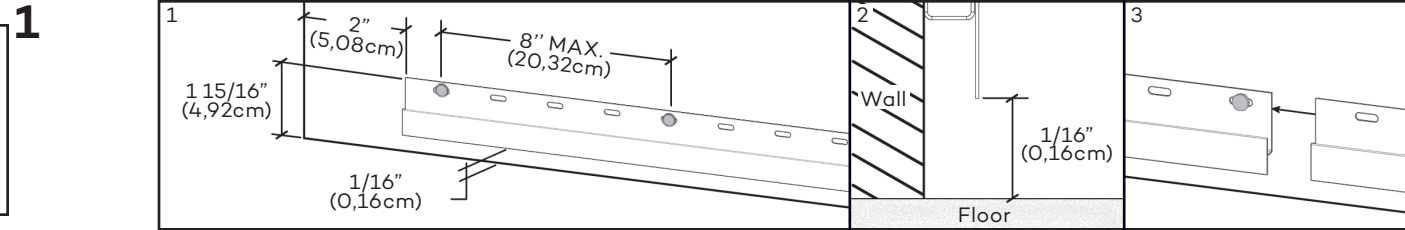
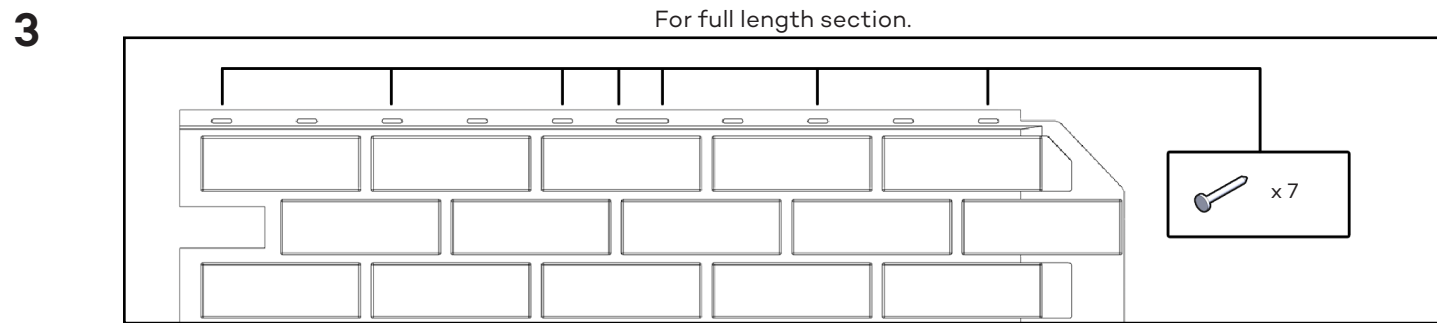


CAUTION: ALWAYS INSTALL PRODUCT FROM LEFT TO RIGHT AND REMEMBER THAT POLYMER UNDERGOES EXPANSION/CONTRACTION DUE TO TEMPERATURE VARIATIONS. FOR A BETTER LOOK WE RECOMMEND TO INSTALL PRODUCT ON FLAT SURFACES (EX: PLYWOOD PANELS OR OSB PANELS). IF SECTIONS ARE INSTALLED ON A WALL WITH FURRINGS, FURRING STRIPS MUST BE INSTALLED OBLIQUELY AND SPACED BY 8"(20,32CM).

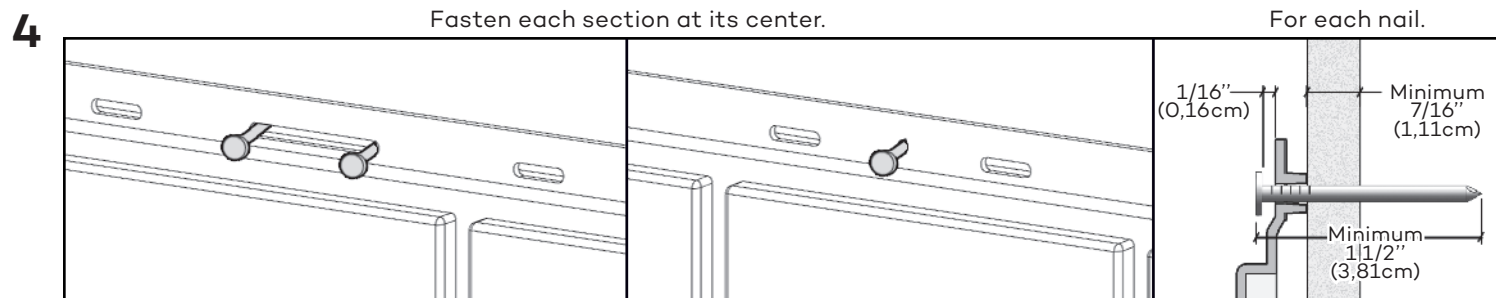
FRANCAIS
AU VERSO



All corner must be installed prior to installing the sections. See step 8.



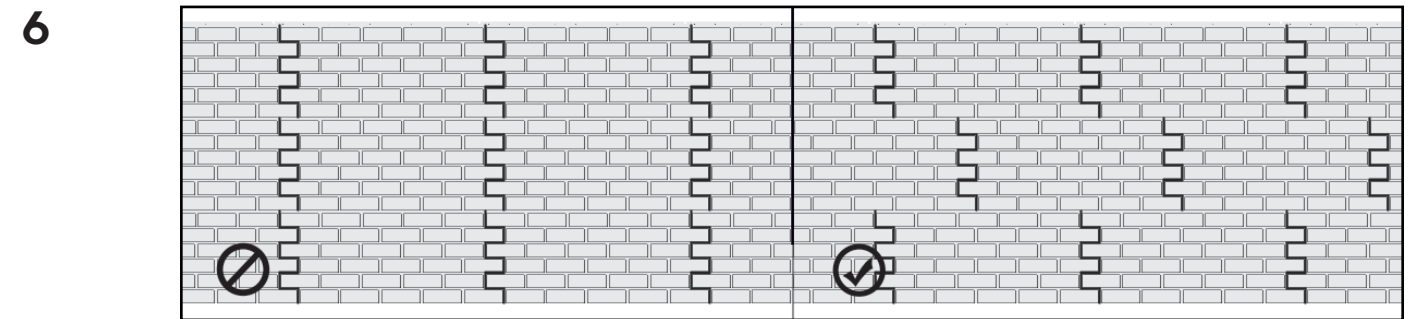
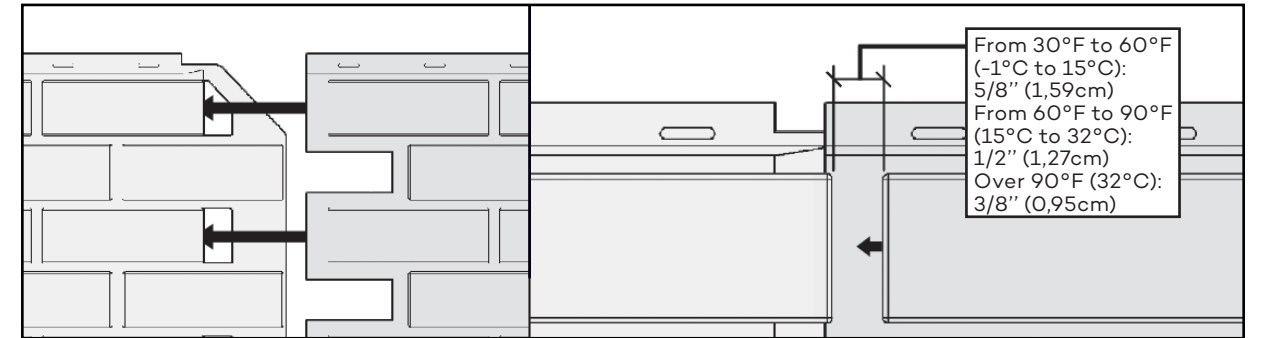
Maximum 8"(20,32cm) between each nails.



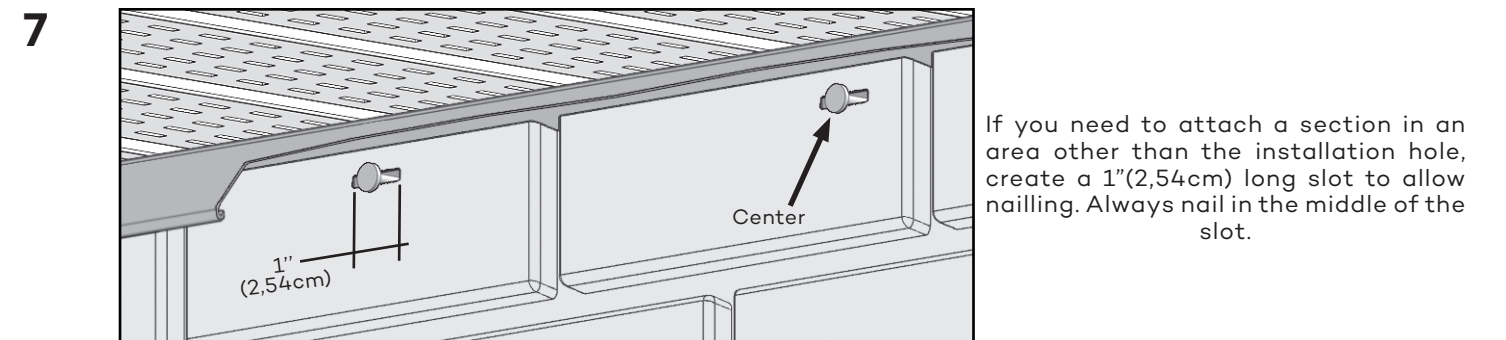
When installing a full section, nail each extremities of the center slot first.

When installing a cut section, nail in its center as shown.

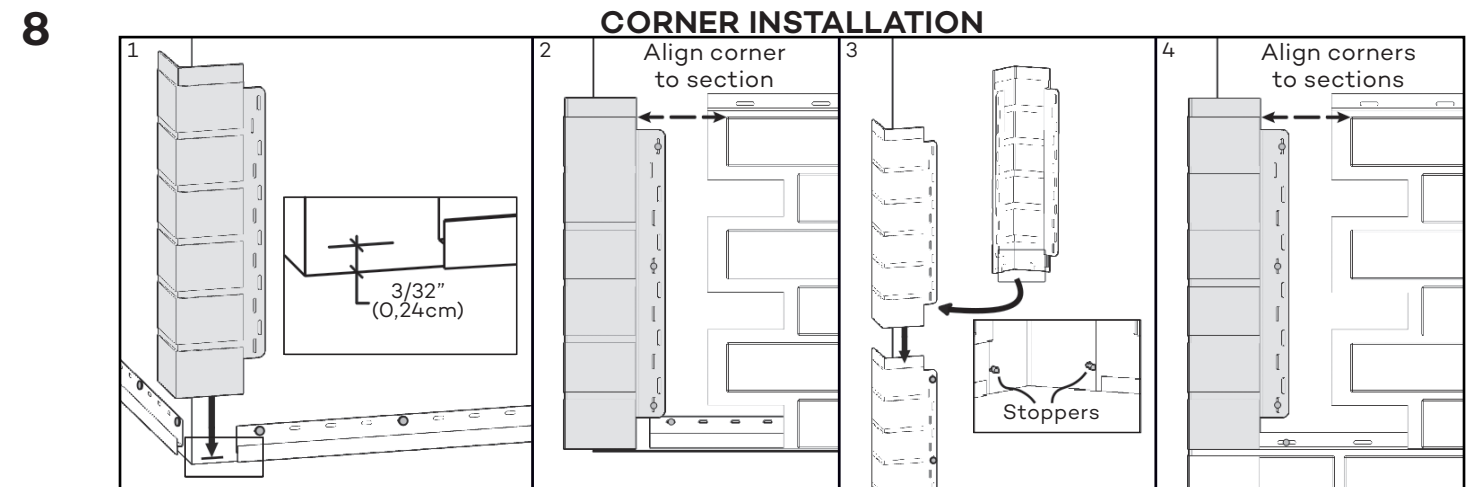
5 Install sections and space mortar joints equally between two sections according to the outside temperature during the installation.



Alternate the joints between rows.



If you need to attach a section in an area other than the installation hole, create a 1"(2,54cm) long slot to allow nailing. Always nail in the middle of the slot.



First TandoBrick™ corner.

Next TandoBrick™ corners.