

Imagine... a look that lasts forever!



Siding Systems

NOVIKSHAKE® NP
NORTHERN PERFECTION

INSTALLATION GUIDE



NOVIKSHAKE® NP - NORTHERN PERFECTION INSTALLATION GUIDE

GENERAL INFORMATION

CAUTION: REMEMBER THAT POLYMER UNDERGOES EXPANSION/CONTRACTION DUE TO VARIATIONS IN TEMPERATURE. THE FOLLOWING INSTRUCTIONS WILL ALLOW FOR THE EXPANSION / CONTRACTION OF THE MATERIAL.

1-Always begin the installation at the lowest part of the structure, from left to right.

2-Always nail through the installation holes. These holes include a polymer film, which permits for precise centering of the nail, allowing the expansion and contraction of the material. Each complete panel must be nailed through the center hole, at both extremities and have a minimum of 5 nails in the nailing channel at maximal intervals of 16" (40,64cm) or less and a nail in each lateral holes (Figure 1). If panels are installed on a wall with furrings, furring strips should be installed on a 45° angle, at 8" (20,32cm) center to center and a furring strip is required behind each nail. Always use corrosive resistant nails or screws with a head of 0.4" (1cm) in diameter and a body of 0.150" (0,38cm) in diameter and penetrate a minimum of 1 1/4" (3,18cm) into a solid surface.*

3-Never hammer the nails in completely; leave a gap of 1/16" (0,16cm). The stoppers located around the holes help to stop the hammer from driving the nails in too far, and provides the required gap. (Figure 2)

4-The Northern Perfection Shake nailing channel allows the use of roofing nailer (ex: Bostitch RN46 and Hitachi NV45). To do so, adjust the tip of the nailer at the highest position. Push the nozzle into the cavity under the nail holes and push against the panel to nail. Make sure each nail is aligned in the nailing hole. (Figure 3)

5-Make sure that all pieces are properly joined together (push firmly upwards on the panel making sure that the insertion is complete) (Figure 4).

* For all specifications and requirements for a Miami Dade code compliant installation, please refer to Miami Dade County Florida NOA 18-0716-05 expiration date: January 24, 2024.

Figure 1

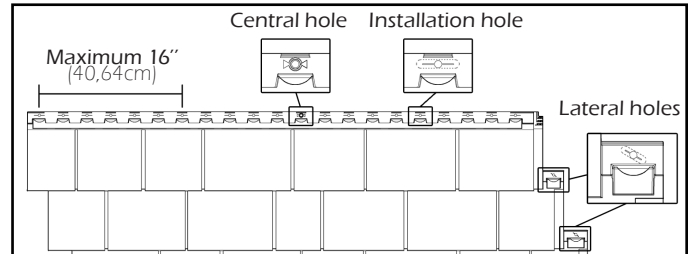


Figure 2

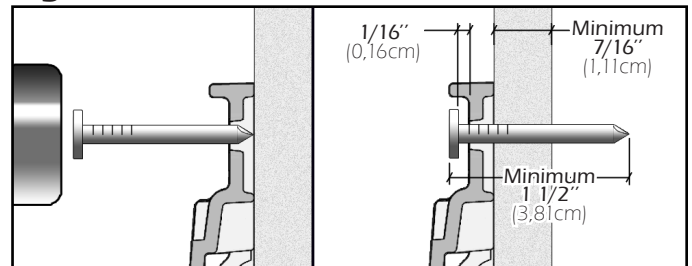


Figure 3

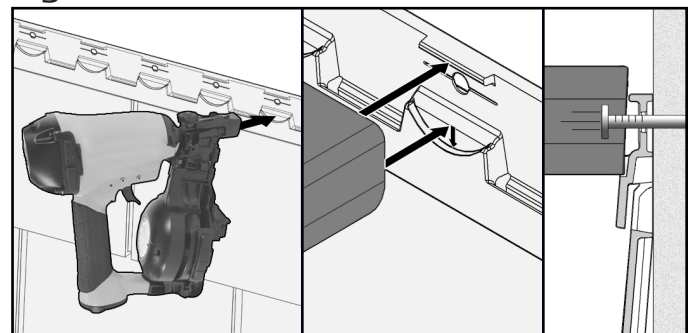
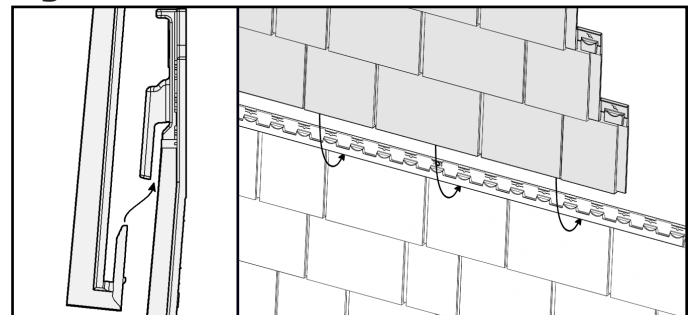


Figure 4



NOVIKSHAKE® NP - NORTHERN PERFECTION INSTALLATION GUIDE

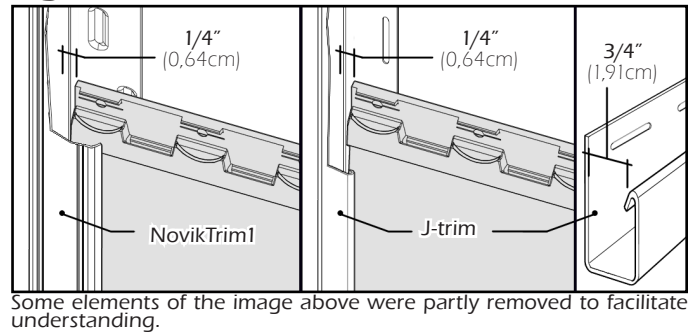
GENERAL INFORMATION (CONTINUATION)

6-When using a finition trim (i.e. NovikTrim1, J-trim, etc.), leave a space of 1/4"(0,64cm) between the trim and the siding (Figure 5). The required opening for finition trim is 3/4"(1,91cm).

Note:

- To cut the material, it is recommended to use a circular saw with a finishing blade.
- Keep the R-E-L number of your products (ex: REL-123456) for future references.

Figure 5



INSTALLATION STEPS

1-First install the starter strips at the lowest point of the structure. Make sure that the horizontal starting line is perfectly leveled and square with the wall.

- Polymer Unisersal Starter Strip (Figure A):

Leave a 1/2"(1,27cm) gap at each end of the wall when using decorative corners (1). If a floor is against the wall you must leave a gap of 13/16"(2,06cm) between the starter and the floor (2). If there is no floor, starter strips should be flush with the base of the wall. Nail the starter strips through the nailing holes at maximal intervals of 8"(20,32cm) or less. Do not forget to nail in the center hole (3). Install the next starter strip by sliding it leftward to the stopper in the previous one and nail it as mentioned above (4).*

- Pro Series Unisersal Starter Strip (Figure A.1):

Leave a 1/2"(1,27cm) gap at each end of the wall when using decorative corners (1). If a floor is against the wall, install the top of the starter strips at 2 11/16"(6,83cm) above it in order to leave a gap of 13/16"(2,06cm) between starter strips and the floor (2). If there is no floor, starter strips should be flush with the base of the wall. Nail the starter strips at maximal intervals of 8"(20,32cm) or less. Install the next starter strip by pressing it against the previous one (3) and nail it as mentioned above.*

Figure A

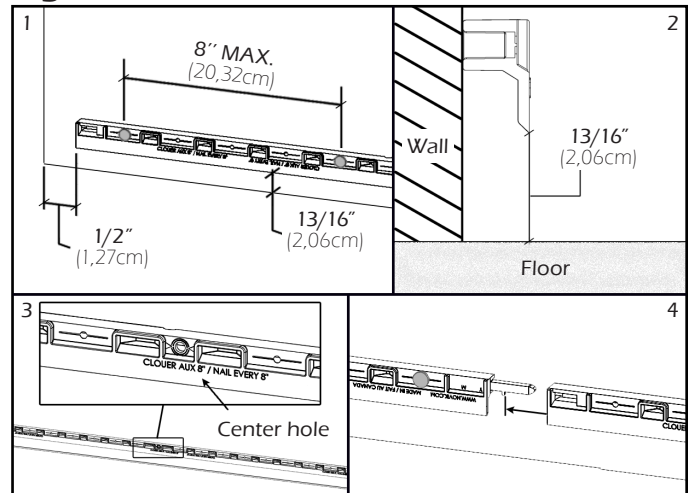
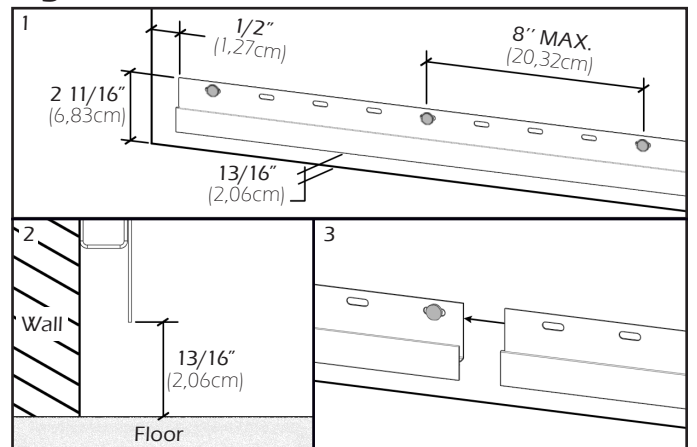


Figure A.1



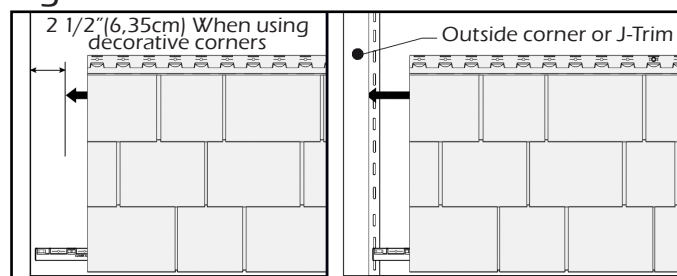
* For all specifications and requirements for a Miami Dade code compliant installation, please refer to Miami Dade County Florida NOA 18-0716-05 expiration date: January 24,2024.

NOVIKSHAKE® NP - NORTHERN PERFECTION INSTALLATION GUIDE

INSTALLATION STEPS (CONTINUATION)

2-When using decorative corners, cut the left side of a panel in a straight line, insert panel into the starter strip and nail the panel at 2 1/2" (6,35cm) from the wall edge. When using outside corner post or J-trim, cut the left side of a panel in a straight line, insert panel into the starter strip and slide it in the trim. Leave a space of 1/4" (0,64cm) between the inside wall of the trim and the siding (Figure B). Measure the wall length to determine where to cut your first panel in order to avoid having a very small piece at the right end of the wall. Be sure to align adjacent walls.

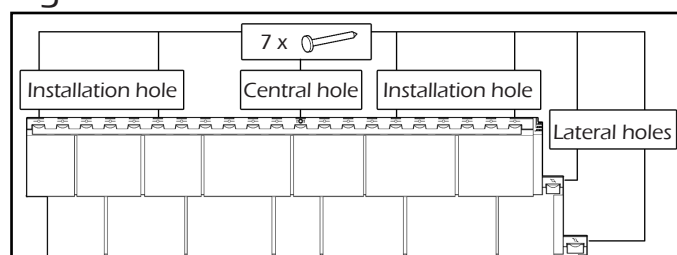
Figure B



3-On each panel, hammer a nail into the center hole of the panel, this will ensure even movement of panel in both directions during expansion/contraction. Also hammer a nail into the last hole on both ends, plus 2 other nails into nailing channel and a nail in each lateral holes (Figure C). Each full length panel should be secured with a minimum of 7 nails. If the panel is installed on a furring wall, a furring strip is required behind each nail.*

- N.B.: If a panel piece does not have the initial center hole in the middle, drill a new center hole of 1/8" (0,32cm) diameter at the same height as the other installation holes.

Figure C



4-Install the following panel by hooking it into the starter strip and sliding it to the left overlapping the previous panel. Make sure to properly engaged the lateral hooks and spaced equally the panels according to the outdoor temperature during the installation. See temperature marks on panels (Figure D).

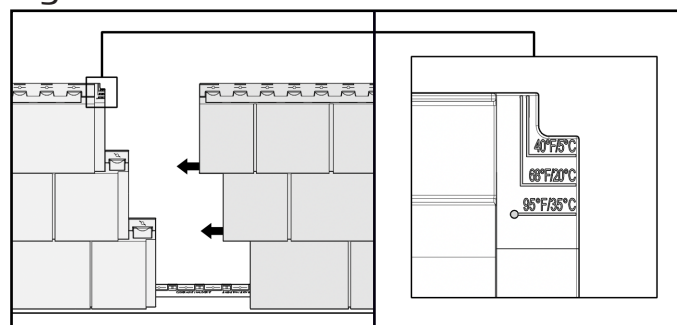
Installation:

35 °C (95 °F) spacing of 0.205" / 5,2mm

20 °C (68 °F) spacing of 0.245" / 6,2mm

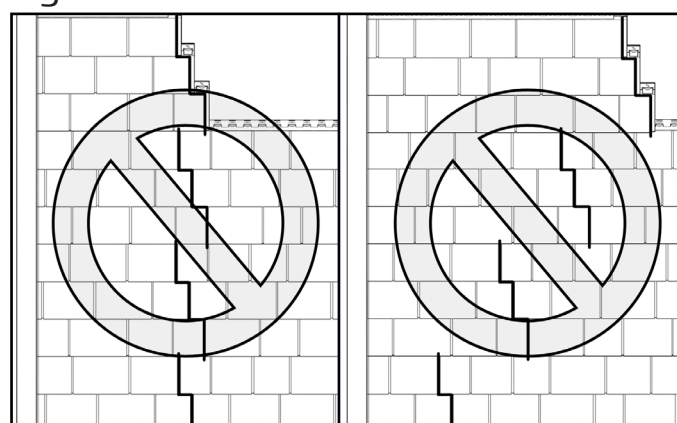
5 °C (40 °F) spacing of 0.305" / 7,8mm

Figure D



5-Begin the second row by cutting the first panel with approximately 16" (40,64cm) increment from the cutting line of the first row. Hooking the lower panel section with the top hooks of the last installed row. To eliminate stacking seams, alternate the cut positions for the following rows. (Figure E)

Figure E



Result to be avoided.

* For all specifications and requirements for a Miami Dade code compliant installation, please refer to Miami Dade County Florida NOA 18-0716-05 expiration date: January 24,2024.

NOVIKSHAKE® NP - NORTHERN PERFECTION INSTALLATION GUIDE

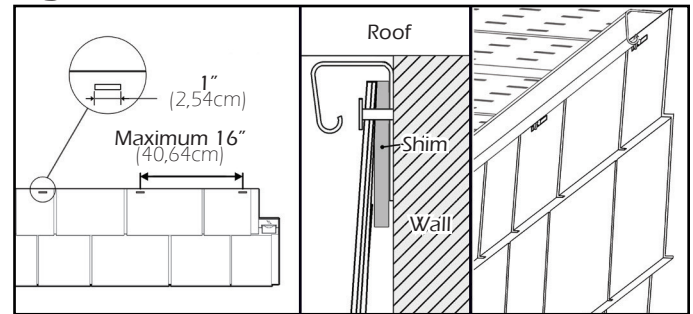
INSTALLATION STEPS (CONTINUATION)

6-For the last row or places where you may need to attach siding other than in installation holes at a concealed spot on the panel use a knife to create new 1" (2,54cm) slots (Figure F); the slot must be wider than the nail but not as wide as the nail head. Although not set in installation holes, this type of cutting will allow the expansion/contraction movement of siding.

-N.B.: For proper installation & optimal appearance, shim as required to adjust the angle of the last row.

Note: Do not set accessories directly on the siding. The fasteners must be fixed on a solid surface. If you need to set accessories on siding, at a concealed spot on the panel create a new 1" (2,54cm) slot larger than the nail body but smaller than the nail head to permit expansion/contraction of siding.

Figure F



DECORATIVE CORNERS INSTALLATION

1-The installation of corners begins once you have completed 2 adjacent walls.

-N.B.: For proper installation & optimal corner appearance, make sure that rows of adjacent walls are at 2 1/2" (6,35cm) from corner wall and at an equivalent height.

2-While installing, slip the two hooks located at rear of part under the starter strip. Push the corner upwards on siding shingles until proper fit (Figure G) then nail both sides of the nailing head.

Figure G

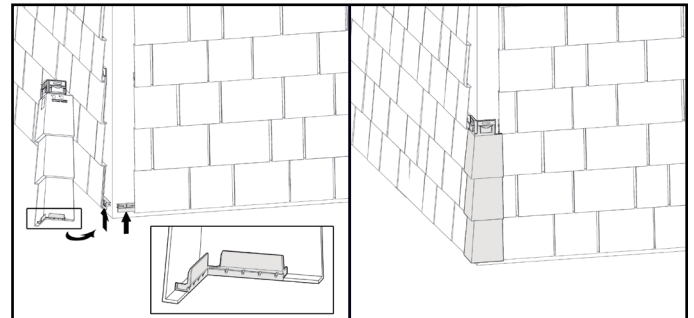
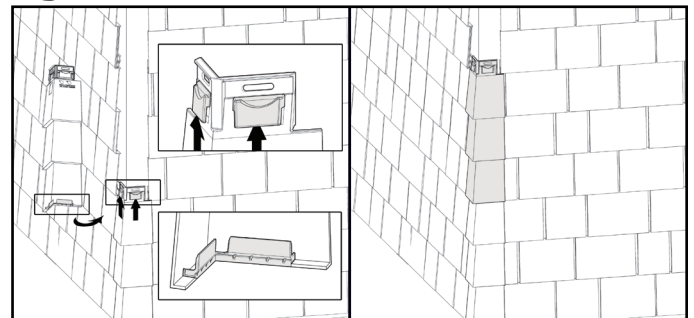


Figure H



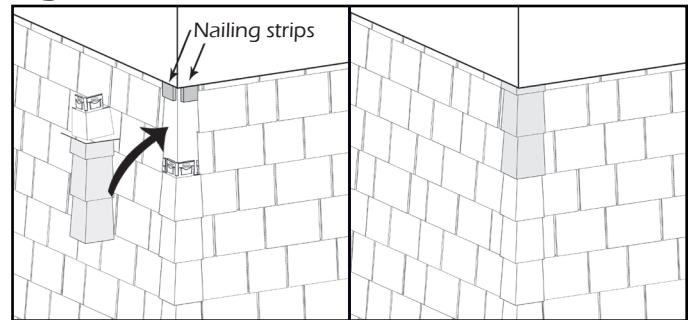
3-For all the other corners, insert the two hooks into the upper hooks of the previous corner. Ensure they are locked in place. Push corner upwards on siding shingles until proper fit (Figure H) then nail both sides of the nailing head.

NOVIKSHAKE® NP - NORTHERN PERFECTION INSTALLATION GUIDE

DECORATIVE CORNERS INSTALLATION (CONTINUATION)

4-For the last corner only, cut excess from part. On each side of the corner, make a hole wider than the shaft of the nail, but smaller than the head. Affix a nailing strip behind these locations to fasten corners firmly. Fold back the top of the corner and nail it down. (Figure I)

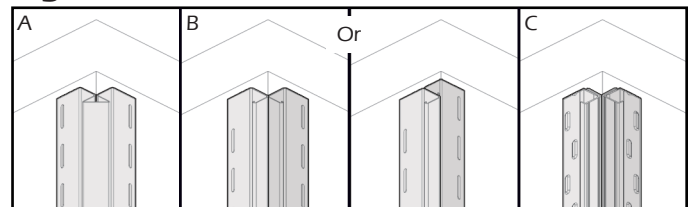
Figure I



INSTALLATION TIP

1-Many solutions are possible to finish an inside corner: inside corner post (A), two J-trims (B) or two NovikTrim1 (C) (Figure J). It is important to seal the inside corner of the wall prior to installation the trims.

Figure J



For details, see the respective installation guide of each product.

2-For all cuts on panel, it may be usefull to refer to the ruler on the back of the panel located on the bottom hook. (Figure K). For example, we recommend alternating the cutting distance of the first panel of every row from 0" (0cm) - 15" (38,1cm) - 30" (76,2cm) - 28" (71,1cm) and restart at 0" (0cm), to obtain a nicer look.

Figure K

