

4 Benefits of Fleet GPS Tracking for First Responders



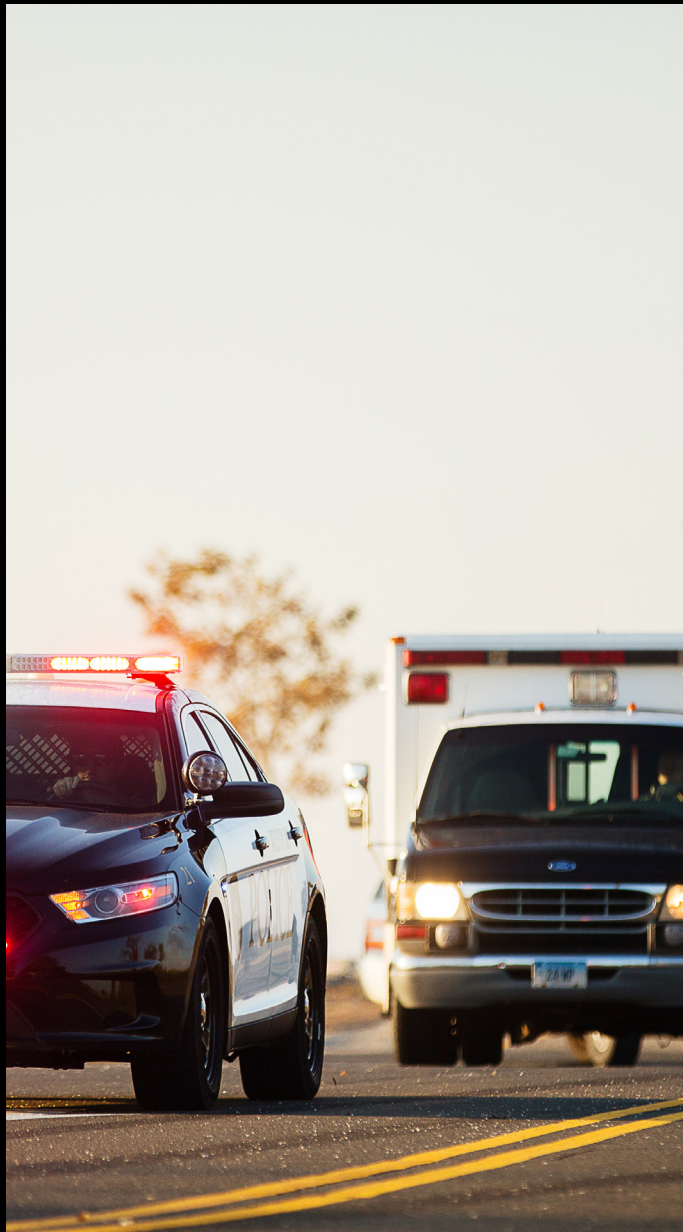


Table of Contents

Benefits of a Fleet GPS Tracking Tool:

Introduction	<u>3</u>
Provide Live Location and Traffic Data	<u>4</u>
Get Immediate Updates	<u>5</u>
Maintain a Safe Working Environment	<u>6</u>
Boost Efficiency	<u>7</u>

Introduction

For first responders, how fast they get to an emergency scene can mean the difference between life and death. Paramedics, police officers, firefighters, medical technicians, and other trained first responders can therefore benefit immensely from the latest GPS tracking technologies to ensure they reach their destinations safely and quickly.

Below, we'll go through four key benefits of a [Fleet GPS tracking tool for first responders](#) to show you how tracking technology can reduce inefficiencies and ultimately save lives.



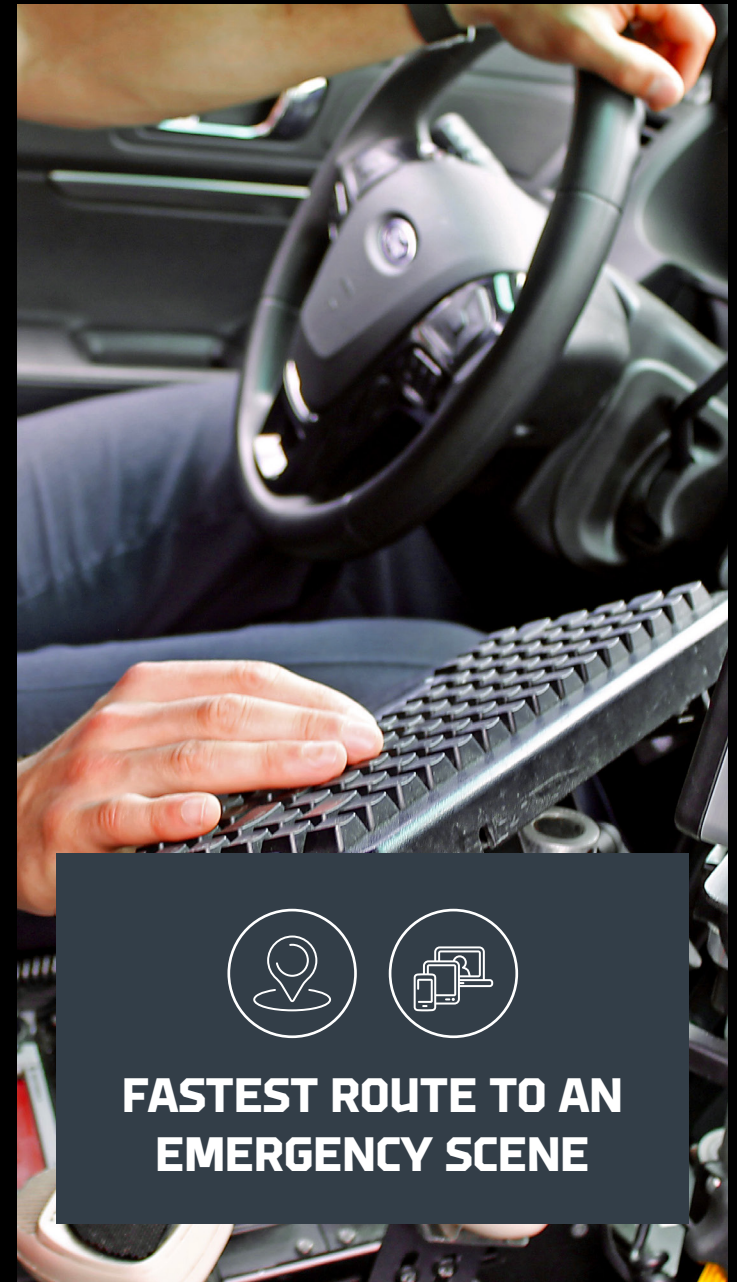
GPS TRACKING TOOL FOR FIRST RESPONDERS

1. Provide Live Location and Traffic Data

[GPS fleet tracking platform](#) gives you access to your fleet vehicle information online and enables you to manage your entire fleet from one screen. In addition to comprehensive visibility of all vehicle positions, it also provides you with auxiliary capabilities, functionalities and analytics that you can apply in real time, especially when time is of essence.

With a GPS tracking tool, first responders can easily see the fastest route to an emergency scene, using real-time location and traffic data. If there's slow traffic, GPS tracking tools can also provide drivers with alternative routes. Besides the critical function of reducing response times, these more efficient routes also reduce fuel expenses and time wastage.

Further, GPS tracking tools allow team leaders and supervisors to monitor fleet locations and performance at any time. In the event of a large-scale emergency, team leaders can assess the current situation and choose to dispatch additional first response vehicles to support existing personnel at the emergency scene.



**FASTEST ROUTE TO AN
EMERGENCY SCENE**

2. Get Immediate Updates

Getting immediate updates is crucial in emergencies. Since many variables can change in a blink of an eye, first responders need to have access to real-time information, so they can make tactical decisions.

For example, if police officers are pursuing a suspect, a GPS tracking tool can help team leaders and dispatchers monitor existing vehicles in order to make immediate strategic decisions on vehicle formations and cut off points. If there is a multi-vehicle pursuit, every team member can view where other vehicles are situated, ensuring that they've covered all the bases.

In the event of a major wildfire, a GPS tracking tool enables firefighter supervisors to view their units and dispatch more help to specific hot spots, if necessary. Here, supervisors can track and communicate with their personnel, and improve the chances of a successful recovery if a firefighter gets lost in the wilderness engulfed in dense smoke.



3. Maintain a Safe Working Environment

While historical data can help improve response times, it can also allow supervisors and staff to discuss safe driving behaviors. First responders are also vulnerable to the dangers of distracted driving from others, so being vigilant on the road is that much more pressing, given the reactive nature of the occupation.

[According to Responder Safety.com](#) in 2017, in US, 38 law enforcement officers died in traffic-related incidents, and nine firefighters/EMS personnel died by being struck by a vehicle while on duty. [In the first four months of 2019](#), 16 emergency responders were struck and killed by vehicles.

Installing a GPS tracking software allows team leaders to track speed, harsh braking, and acceleration from first responder vehicles. This opens up a door for open and transparent conversations regarding [safety behaviors](#) while driving, with first responders and the general public.



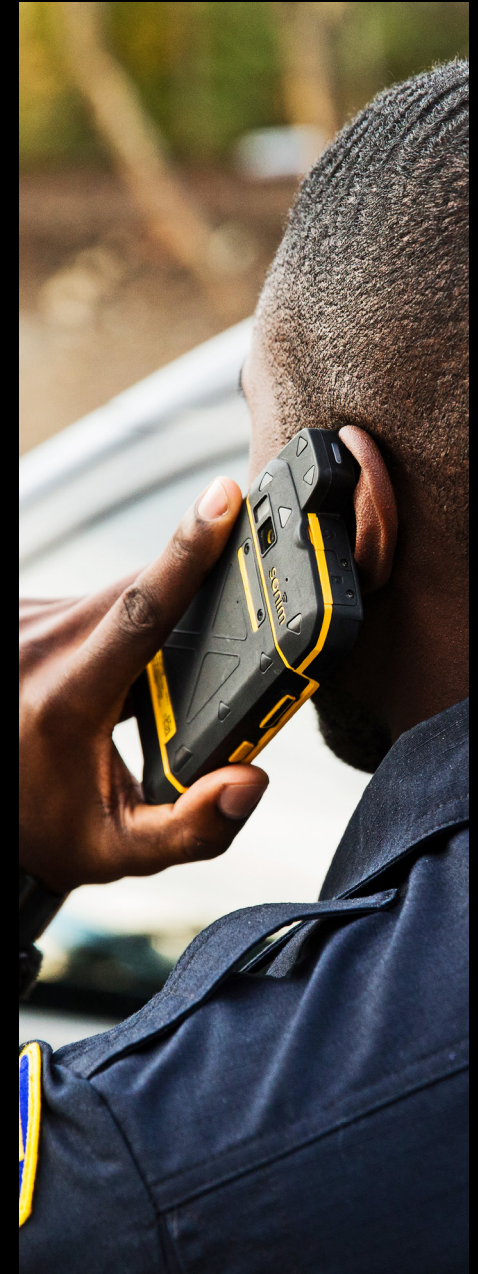
4. Boost Efficiency

Overall, GPS tracking devices streamline existing workflows by optimizing first responder routes, reducing fuel expenses, and helping team members make better-informed decisions, all while allowing supervisors to manage their team remotely. The right device can even run engine diagnostics and check sensors to monitor the vehicles' maintenance needs.

According to Chris Penrose, the President of Internet of Things Solutions, AT&T, the recent collaboration between AT&T, Fleet Complete, and Cradlepoint will give public safety agencies on FirstNet a fully-integrated end-to-end fleet management solution that improves response times and overall efficiency within first responder teams.

“Think of the ability to quickly dispatch police cars and ambulances to the scene or get nearly instantaneous insight if a school bus breaks down. With this collaboration, first responders get a holistic solution that helps them stay better connected to their workers and vehicles while keeping us all safer.”

When time is of the essence, it's crucial to equip first responders with the tools and resources they need to arrive quickly at an emergency site. Tracking technologies, like Fleet GPS tracking systems, can provide live location and traffic data. It can give teams immediate updates on the emergency and track historical data to ensure supervisors coach first responders on the importance of maintaining a safe working environment. Overall, Fleet GPS tracking will also contribute to the organization's bottom line by improving efficiency, reducing fuel wastage, and improving response times.





FleetComplete[®]

**Contact us at government@fleetcomplete.com
or 1 855 634 7292 to learn more.**