

# 2ND GEN ACUSENSE PCI SERIES

Focus on Key Events:  
Keep Unwanted Behavior Out  
Protect Your Property From Intruders  
and Theft

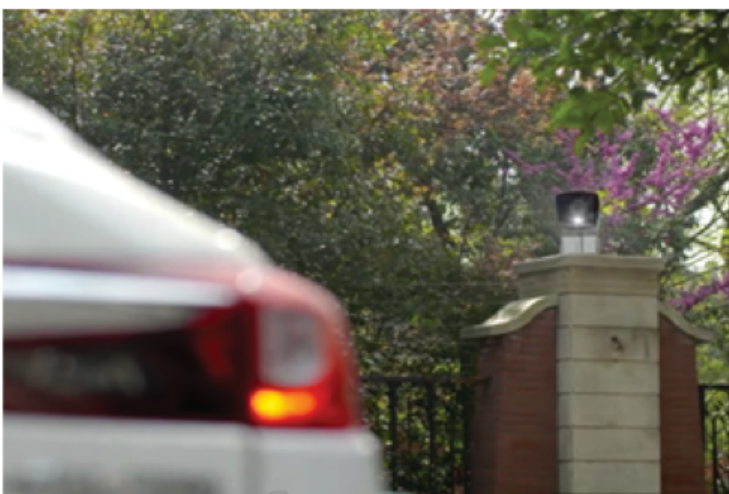


Hikvision has released its new and improved 2nd Gen AcuSense PCI Series Cameras. Offering enhanced hardware and mounting, the PCI series is easier to install, is waterproof, and features new Motion Detection that works in conjunction with human and vehicle filtering. The PCI series enhances accuracy and reduces false alarm notifications, helping to save you time and money on incident response. With new audio and visual notifications, 2nd Gen AcuSense provides real-time active deterrence from crime, intruders and unwanted behavior.

## Hikvision 2nd Gen AcuSense PCI series camera delivers:

### Strobe Light and Customizable Audio Warning, Monitor and Deter In Real-Time (SL Models Only):

2nd Gen AcuSense SL models have a strobe light and audio alarm messages that strengthen deterrence. When a potential intruder is detected, the AcuSense camera triggers a VCA (video content analysis) event, and the strobe light and audio alarm can be used to inform the intruder that they are being filmed and to leave the area. This feature reduces the risk that an intrusion event will occur. Audio volume and strobe light brightness are adjustable and can be adapted to the environment. (SL models only)



**Ultra-low Light “Powered by DarkFighter” Technology Delivers Brighter Colors and Clear Detail at Night:**

AcuSense cameras incorporate Hikvision’s “Powered by DarkFighter” ultra-low light illumination technology, which provides superior surveillance images, even at night. Combined with ultra-high definition video capabilities, DarkFighter helps identify and react to security threats effectively, and provides more extensive video evidence in the event of a security incident. DarkFighter technology eliminates the need to add costly lighting.



Conventional Camera



Powered by DarkFighter Camera

**Camera-Accessible Cloud Options to Store Video on the Cloud with Greater Flexibility and Low Operating Costs:**

2nd Gen AcuSense Camera support Hikvision embedded open platform (HEOP), allowing it to run custom, switchable onboard third-party cloud applications on devices. Users can easily enable and activate cloud service from the camera’s web interface. Cloud video storage helps customers to build short term and flexible cloud backups, making it easier to stay in compliance with video retention requirements while maintaining low operational costs. It’s beneficial for a broad range of applications, including all types of residential projects, quick service restaurants, the cannabis industry, retailers, education, and more.

**Effectively Reduces False Alarms, Increases Productivity and Enhances Operational Efficiency:**

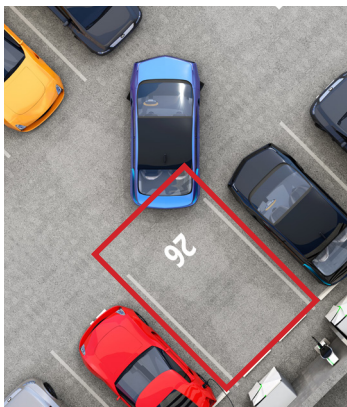
Saves time and money spent on non-threatening events with faster and more accurate intrusion detection. By selecting certain targets such as people or vehicles, the AcuSense system can filter out unselected target types to reduce false alarms, shortening time spent on unimportant events and manual video search.



Region Entrance



Region Exiting



Intrusion Detection



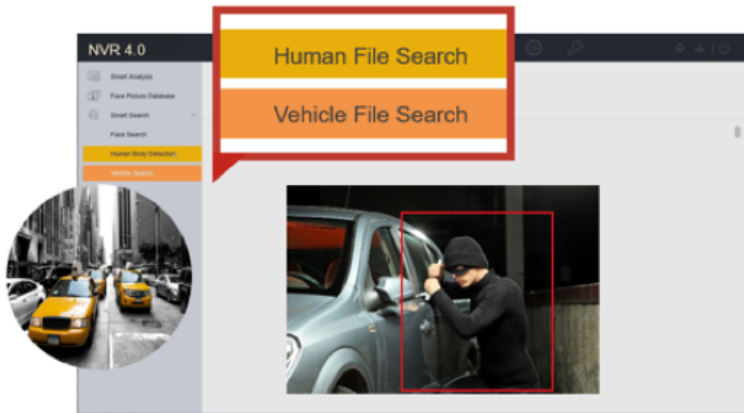
Line Crossing

People and vehicles are typically the most important factors to identify in perimeter surveillance. Conventional perimeter security systems generate false alarms when it detects movement of non-human or non-vehicle objects such as animals, tree branches, light changes, and even rain. 2nd Gen AcuSense accurately senses and distinguishes human and vehicle movements from other moving objects, reducing false alarms. Security staff receives more accurate alarm data to evaluate, enabling more efficient responses to incidents and reducing unnecessary responses to false alarms and unimportant events. The AcuSense reliability can greatly reduce overall operating costs.

### Quick Target Search:

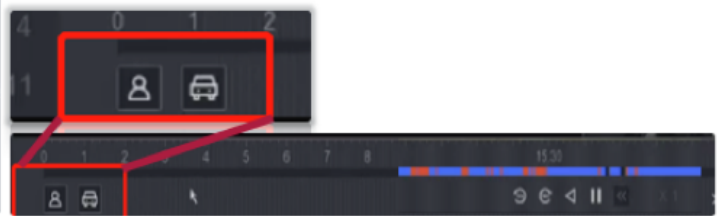
Enables staff to automatically identify footage of people and vehicles, eliminating the high costs of manual searches of video footage. Video files are pre-sorted into "Human Files" or "Vehicle Files," making it easy to access the video clip you want using these categories and time or location.

### Quick Target Search:



### Motion Detection 2.0

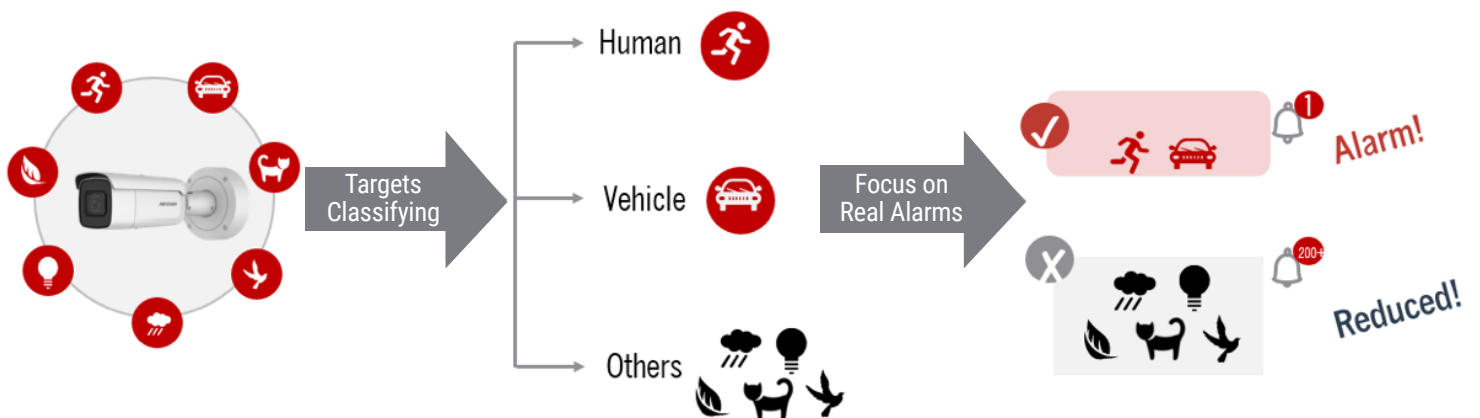
Motion event target type check by human/vehicle



### Easy Configuration:

Allows users to easily and quickly enable a video analysis rule to start enjoying the simplicity and effectiveness of AcuSense performance. This becomes important in environments bound by ever-changing regulatory requirements.

### How 2nd Gen AcuSense Works:



## Applications:



Residential/Gated Community



Retail Stores/QSR



Office Buildings,  
Warehouses and Factories



Education



Parking Lots

## Available Models:

### Non Strobe Light and Audio Alarm 2nd Gen AcuSense Cameras



#### Fixed Mini Bullet

##### 2MP:

PCI-B12F2S (2.8 mm)

PCI-B12F4S (4 mm)

PCI-B12F6S (6mm)

##### 5MP:

PCI-B15F2S (2.8 mm)

PCI-B15F4S (4 mm)

PCI-B15F6S (6mm)

##### 8MP:

PCI-B18F2S (2.8 mm)

PCI-B18F4S (4 mm)

PCI-B18F6S (6mm)



#### Fixed Mini Dome

##### 2MP:

PCI-D12F2S (2.8 mm)

PCI-D12F4S (4 mm)

PCI-D12F6S (6mm)

##### 5MP:

PCI-D15F2S (2.8 mm)

PCI-D15F4S (4 mm)

PCI-D15F6S (6mm)



#### Fixed Turret

##### 2MP:

PCI-T12F2S (2.8 mm)

PCI-T12F4S (4 mm)

PCI-T12F6S (6mm)

##### 5MP:

PCI-T15F2S (2.8 mm)

PCI-T15F4S (4 mm)

PCI-T15F6S (6mm)

##### 8MP:

PCI-T18F2S (2.8 mm)

PCI-T18F4S (4 mm)

PCI-T18F6S (6mm)



#### Fixed Long Bullet

##### 2MP:

PCI-LB12F2S (2.8 mm)

PCI-LB12F4S (4 mm)

PCI-LB12F6S (6mm)

PCI-LB12F12S (12mm)

##### 5MP:

PCI-LB15F2S (2.8 mm)

PCI-LB15F4S (4 mm)

PCI-LB15F6S (6mm)

PCI-LB15F12S (12mm)

##### 8MP:

PCI-LB18F2S (2.8 mm)

PCI-LB18F4S (4 mm)

PCI-LB18F6S (6mm)

PCI-LB18F12S (12mm)



#### VF Bullet

PCI-B12Z2S **2MP**

PCI-B15Z2S **5MP**

PCI-B18Z2S **8MP**



#### VF Dome

PCI-D12Z2S **2MP**

PCI-D15Z2S **5MP**

PCI-D18Z2S **8MP**

### (SL) Strobe Light and Audio Alarm 2nd Gen AcuSense Camera Model



#### Fixed Mini Bullet

##### 5MP:

PCI-B15F2SL (2.8 mm)

PCI-B15F4SL (4 mm)

PCI-B15F6SL (6mm)



#### Fixed Turret

##### 5MP:

PCI-T15F2SL (2.8 mm)

PCI-T15F4SL (4 mm)

PCI-T15F6SL (6mm)



#### Fixed Long Bullet

##### 5MP:

PCI-LB15F2SL (2.8 mm)

PCI-LB15F4SL (4 mm)

PCI-LB15F6SL (6mm)

FOCUS ON YOUR SUCCESS

**HIKVISION**

©2021 Hikvision USA Inc. and Hikvision Canada Inc. All rights reserved. Hikvision is a registered trademark of Hikvision Digital Technology Co., Ltd. in the US, Canada and other countries. Product specifications and availability are subject to change without notice.

Disclaimer: Hikvision USA Inc. products depicted herein are not FDA approved medical devices and are not intended for use in the diagnosis of disease or other conditions, or in the cure, mitigation, treatment, or prevention of disease. When configured correctly, the Hikvision products discussed herein can identify elevated human skin-surface temperature relative to a sample population.