



What you'll need:

- ELO Remote Desktop Name
- ELO Username
- ELO Password
- ELO Gateway Name

## Step 1 – Download Microsoft Remote Desktop onto your iPad

Open the **App Store** on your iPad



In the search bar, search for “**Microsoft Remote Desktop.**”

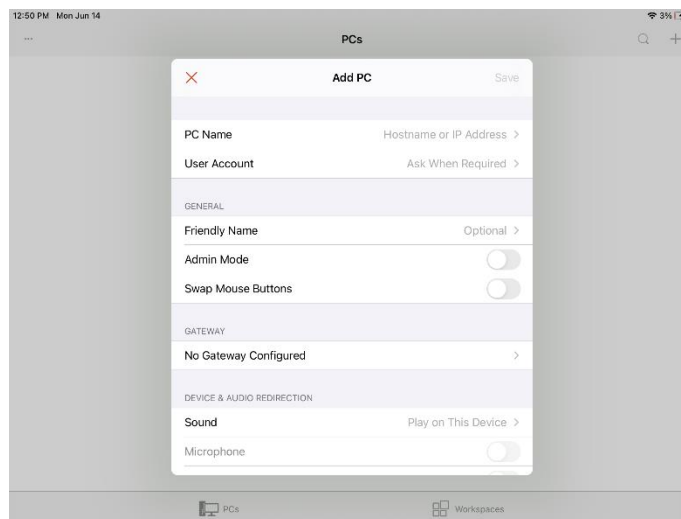


Click **Get** to start the download. Click on the **Microsoft Remote Desktop icon** to open the app.

## Step 2 – Configure Estimating Link Online PC on Microsoft Remote Desktop

While in the Microsoft Remote Desktop app, click the **red plus sign** located at the top right.

- Select **Add PC** and the following window will be displayed:





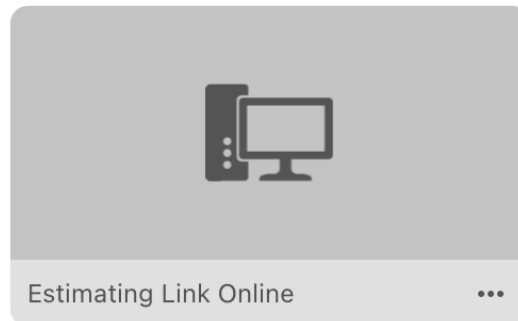
# Setup ELO on iPad



## Estimating Link

- Select **PC Name** and **enter your PC Name** (this is your “remote computer” name).
  - Click the **red carrot** in the top left of the window to go back.
- Select **User Account** and then select **Add User Account**.
  - Enter your Username
  - Enter your Password
  - Select **Friendly Name** and title it **Estimating Link Online**.
    - Click the **red carrot** in the top left of the window to go back.
  - Click **Save** on the top right of the window.
    - Click the **red carrot** in the top left of the window to go back.
- Select **No Gateway Configured** to configure the gateway.
  - Select **Add Gateway**
  - Enter your **Gateway name** (this is your “RD Gateway server” name)
    - Click the **red carrot** in the top left of the window to go back.
  - Click **Save** on the top right of the window.
  - Click the **red carrot** in the top left of the window to go back.
- Click **Save** on the top right of the window and then **close** the window.

You will now have Estimating Link Online listed as a selection. To open your Estimating Link Online, click the box and it will open.





# Setup ELO on iPad



Estimating Link

---

Need more help?  
Contact us anytime!



[Knowledge Link](#)



[Support@TCLI.com](mailto:Support@TCLI.com)



(800) 448-0741