

The Next Frontier of EHS Analytics

How to Drive Intelligent Environmental and Safety Decisions



June 2021 | Confidential

Housekeeping

- **Webinar Recording & Slides**

A copy of today's webinar recording and slides will be sent out after the event

- **Submit Questions Anytime**

Use the "Questions" panel to submit your questions, we'll either answer them live or follow-up after!

Speakers



Cassie Wallace
VP of Product, Mapistry



Courtney Wilson
Senior Sales Engineer, Mapistry



Ryan Janoch
Founder of Mapistry

Poll Questions

Market shift

In the past....

Compliance programs required less resources and less specialized skills to manage effectively



Paper Worked

Information could reside locally in files, it did not have to be used frequently



Simpler Rules

Regulations were easy enough for non-experts to comprehend



Minimal Oversight

Internal and external oversight and enforcement was limited

Today...

The speed, complexity and consequences of compliance is outpacing the bandwidth of compliance staff



More Connected

There's a need to connect to people, data and documents in real-time



More Complexity

Regulations are evolving quickly and drastically expanding in breadth and depth



Sharp Consequences

Non-compliance has serious legal and financial consequences

What's driving this change?

Market Trends: Resource Constraints

Overcoming operations & environmental staff time demands

- **COVID Impacts**
 - Staff turnover and reduction
 - Rise of remote working conditions and “virtual” audits
- **Regulatory complexity continues to grow**
 - Data reporting is a massive time investment, even when fully staffed
 - Lack technical expertise to interpret results and understand risk levels



Market Trends: Enforcement Readiness

Stricter scrutiny of companies' compliance programs

- **Enforcement is on the Rise**
 - Biden Administration's focus on environmental justice
 - Enforcement Increase by EPA/DOJ
 - 2x OSHA Investigators
- **Growing need to be “Audit Ready”**
 - Prioritizing software to create visibility and accountability
 - Need to build and a maintain an audit trail

Home » EPA Enforcement Policies Prioritize Environmental Justice And Embrace “NextGen” Compliance Tools

EPA Enforcement Policies Prioritize Environmental Justice and Embrace “NextGen” Compliance Tools



By Matthew Z. Leopold, Samuel L. Brown, P. Scott Burton, Todd S. Mikolop, Gregory R. Wall & Alexandra Hamilton on May 10, 2021

POSTED IN EPA

Mitigation of Potential Penalty Costs...

\$76,764
Per Day

\$37,500
Per Day

\$56,460
Per Day

\$102,638
Per Day

\$59,017
Per Day

**Haz Waste
(RCRA)**

SPCC

**Water
(CWA)**

**Air
(CAA)**

**Tier II
(EPCRA)**

Internal costs on consultants & attorneys are typically 2X the external cost

A person wearing a white long-sleeved shirt and a high-visibility orange safety vest with reflective stripes is standing at a construction site. They are holding a tablet in their left hand and a pen in their right hand, appearing to be taking notes or reviewing data. The background is a blurred construction site with various pieces of equipment and structures under a bright sky. The overall image has a dark, semi-transparent overlay.

Mapistry is on a mission to fuel a **sustainable economy**
by empowering organizations to make
intelligent environmental and safety decisions

Customer Needs: Proactively Manage Risk

Monitor performance, detect weaknesses, and take action



Customer Needs: Usability & Visibility

Drive intelligent environmental and safety decisions



Transparency

Real-time visibility and insight into compliance health



Collaboration

Empower access to essential field data, tasks and documents



Efficiency

Automate workflows for field & corporate teams to reduce costs



Accountability

Ensure dispersed teams meet compliance obligations

Software Strategy

Software Strategy

Mapistry's approach to Analytics

Ready-made EHS intelligence dashboards

- Purpose-built for EHS needs
- Highlights problem areas, such as sites with the most incomplete inspections and past due tasks

Actionable in real-time

- See daily activity and progress across your sites
- Track KPIs to proactively detect issues before they turn into bigger problems, regulatory fines, or even lawsuits

Highly flexible

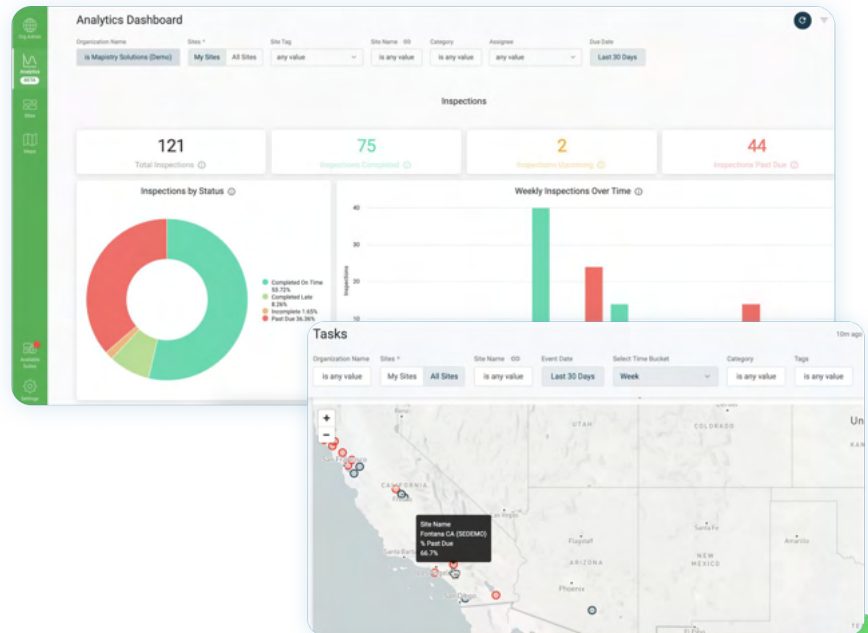
- Variety of filters and visualizations for your data
- Filter by compliance area such as Air, Safety, Water, etc.
- Drill into specific inspections, tasks, and logs



What's New

Turning EHS data into actionable insights

- See **tasks**, **inspections**, and **logs** status
- **Filter** by organization, site, tags, category, assignee, and due date to highlight areas and sites that are falling short
- Export **polished visualizations** in reports and internal communications
- **Configure alerts** for conditions like exceeding permit limits or missed mandatory inspections



Demo

Business Case

How to get the most out of Analytics

- **New Functionality**
 - Scheduled Deliveries
 - Custom Notification
 - Drill Downs
 - Exports
- **Common Questions you can Answer**
 - Are the daily safety inspection being completed
 - What types BMP corrective actions were identified
 - What deviations did we have on our visual emissions observations

What's Next

A look at our roadmap

- **Expanded dashboards for category-specific data**
 - Air Emissions
 - Stormwater Sampling
 - Wastewater Sampling
- **More visualizations and filters**
 - Days to completion
- **Tell us what you need!**
 - Feedback for future product releases and custom solutions
 - Drop a line to cassie@mapistry.com



Questions

- **Want to see a custom demo?**

Schedule one [here](#)

Email: info@mapistry.com

(800) 553-7420

- **Have product feedback?**

Email: cassie@mapistry.com

Thank you!