



TRIED AND TRUE

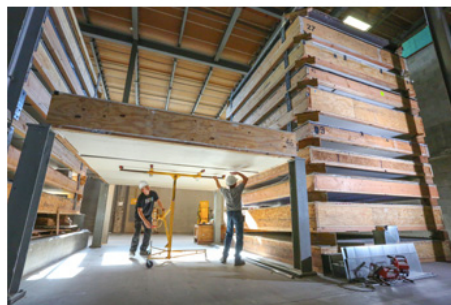
Thank you for reading our newsletter. I am always boasting about our state-of-the-art facility here: NGC Testing Services' 51-year history, its 53,000-square-foot building, the multiple full-scale test furnaces, our crane capacities, our huge thermocouple capabilities, our nine acoustical chambers and so on. But as I began writing my note to you, I started thinking about our most important attribute, our staff. As I look around at the expertise of this crew, I count more than 170 years of combined testing experience in our technical staff, plus many years of experience added with our construction and technician employees. In terms of what we can offer you, this translates to superior services and test accuracy. Those of you who have asked about our services, as well as our current clients, know Customer Services Coordinator Tom Richards will answer your inquiries in less than a day, and usually within hours. If you try us out, I think you'll be pleasantly surprised. Our focus is fast turnaround and accuracy, and we try to complete most testing within two weeks. Our test engineers offer efficient guidance throughout your test project. Because experience is so valuable, we continue training our newer staff so we can provide our high level of customer service to you for the next 51 years. In this issue, we highlight the unparalleled capabilities of our acoustical floor-ceiling chambers (with multiple movable test assemblies we build and store). We also feature a technical piece about UL 1715, or Room Corner Burn Test, as well as a snapshot of our laboratory "by the numbers" (mostly boasting about our facility again). What keeps us humble is the fact that we are here for one reason: to provide you and your company with testing services. As always, we thank you for your business and consideration to use our services.

Bob Menchetti

Director of Laboratory Facilities & Testing Services

FOCUS ON: STACKING UP ACOUSTICAL TEST ASSEMBLIES

No matter how you stack it, our facility has an abundance of Floor-Ceiling Acoustical Test Assemblies. We have more than 50 prebuilt, movable test assemblies. Many are conventional concrete and wood assembly designs and others are proprietary systems, stacks and stacks of them. We build additional assemblies all the time. Our overhead crane shuffles stacks of 12' x 16' acoustical assemblies, inserting the next assembly to test into our two-story test chambers. Outside of the test chambers, we construct and cure specimens and then crane them in to be tested when ready. With our facility and capabilities, we can test on an extremely short turnaround time with lower construction costs. Do you need something custom? We can construct and store your proprietary designs for your company, whether you need them for testing now or in the future. We can also accommodate any changes, including new floor toppings or ceilings. When you are ready, we are prepared to conduct your next acoustical test – here the odds of success are stacked in your favor.



LEARN MORE

UL 1715: FIRE TEST FOR INTERIOR FINISHING MATERIAL

We use the UL 1715 test to evaluate the flammability contribution of wall and/or ceiling materials/assemblies exposed to early fire growth under specified room/fire exposure conditions. This test evaluates the effectiveness of fire barrier materials as protection for other combustible materials or components within the assembly.

The test begins with a 30-pound wood crib, which is constructed to a specific configuration, species and conditioning. The crib is positioned in the corner of an 8' x 12' x 8' room, flanked by the test specimens in the form of 8' x 8' walls and/or ceiling surface materials. We then ignite the crib with specified accelerant-soaked wood shavings; it produces a uniform flame for direct impingement on the walls and/or ceiling. We measure how the wall or ceiling (or both the wall and the ceiling materials or assemblies) contributes to fire growth by calculating:



- a) The time history of temperature development within the room;
- b) The time from ignition to flameover; and
- c) The maximum observed flame progression.

During the test, observed surface burning shall not extend to the extremities of the test specimen, and the flame should not project through the doorway opening at any time. We videotape the test, and compile an additional extensive still photo record continuously during the 15-minute test duration.

We base pass/fail criteria on observations as described above and on observations after the test. A successful test should show that the combustive damage, such as burning and charring, of the test materials within the assembly diminishes at increasing distance from the immediate fire exposure area.

Please contact me with questions about this test or to schedule one for your interior finishing products.

BY THE NUMBERS

JUST THE FACTS

Sometimes you want to see just the facts. A quick way to convey NGC Testing Services' story is through our numerical facts. Here they are:

- 150,000 lb. floor-ceiling furnace combined live load capacity
- 110,000 lb. axial load capacity in wall furnace
- 53,000-plus square feet
- 28,000 lb. wall furnace axial load capacity
- 9,300-plus acoustical tests conducted
- 8,000-plus flame spread tests conducted
- 3,100-plus endurance fire tests conducted
- 1,000 approximate number of worldwide clients
- 295 combined thermocouple capacity for fire tests
- 170-plus years of combined direct testing experience (key technical staff)
- 51 years of testing
- 50-plus prebuilt movable acoustical floor-ceiling IIC, STC test assemblies
- 30-ton overhead crane
- 28 ft. clear interior height
- 12-ton overhead crane and 12-ton overhead trolley system
- 9 acoustical test chambers
- 8 fire test furnaces and apparatuses

- 7 structural / physical test apparatuses
- 5 large shipping / receiving overhead door entries
- 4 fire floor-ceiling test frames
- 3 firewall test frames
- 2 visitor office work areas
- 1 single testing facility providing all your fire, acoustical, structural / physical testing needs



TAKE A CLOSER LOOK!

Check out our new [brochure](#) and watch our [video](#) for the latest updates about NGC Testing Services' capabilities. We're ready to put your products to the test, and this is a great way to see all that we can do for you. Take a look and give us a call — let us know how we can help.



**DOWNLOAD
OUR BROCHURE**



**WATCH
OUR VIDEO**



Bob Menchetti | Director of Laboratory Facilities & Testing Services
rjmenchetti@ngctestingservices.com | 716.873.9750 Ext. 341

Please stay in touch!

Send any email changes or additions to info@ngctestingservices.com so you can continue to receive *NGC Testing Services Update*.