

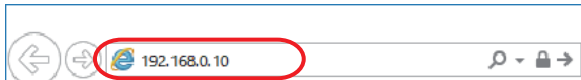
Firmware Update Procedure

This document describes how to upgrade the firmware of Z-1.

The firmware can be updated using the Web browser interface of Z-1.

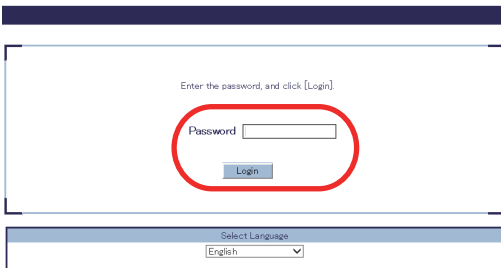
* In this document, Windows 10 is used as an example. However, the procedure will be the same if you are using an OS other than Windows 10.

1. Start a Web browser on the PC and enter the IP address of Z-1 in the address bar. Press the Enter key.



* Above IP address is a sample address.
Enter the IP address configured to Z-1.

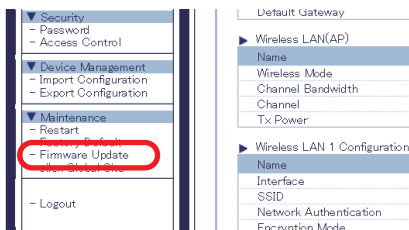
2. The login page of Z-1 is displayed. Enter the password of Z-1 and click **Login**.



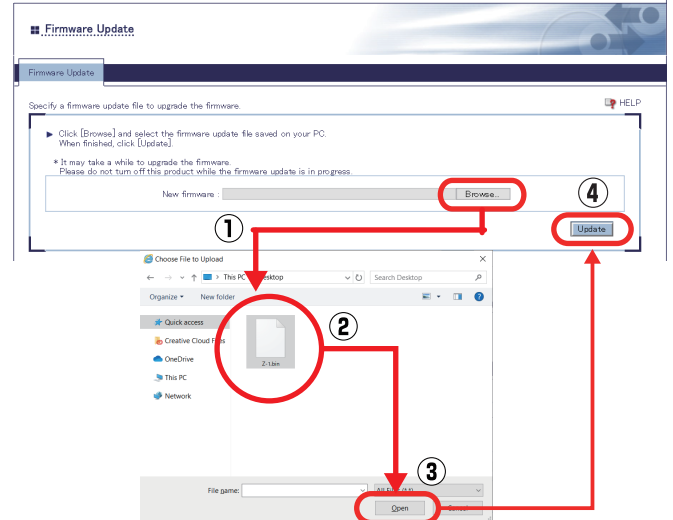
* By defaults, no password is set to Z-1. Just click **Login** then.

* When the login password configuration page appears, enter the password to configure for Z-1. After the login password is configured, enter it at the login page.

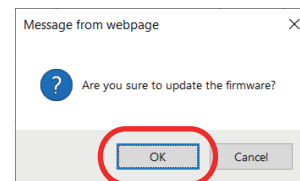
3. The Web page appears. Click **Firmware Update** from the menu.



4. The **Firmware Update** page appears. Click **Browse**, select the latest firmware (Z-1.bin) that has been downloaded to the PC, and click **Update**.



5. The update confirmation dialog appears. Click **OK** to update the firmware. Please wait until the update is complete.



6. When the login page appears, check the latest version is displayed in the bottom left corner.



7. Now, the firmware has been updated. Close the Web browser and restart Z-1 by unplugging and plugging the power cord.