



BEAMFLY

Telecom Device Management & Monitoring

- **ACS & B/OSS** Technology Integration Specialists
- Data Integration & Business Intelligence
- **Managing** 15+ Million device & 7 Billion Daily Transactions
- **Servicing** Telco, Muni-Utility, Cable, FTTx, ISP/WISPs and Satellite Providers.

- Headquarters - Atlanta, GA - USA
- Development & Support within - USA, UK, Bulgaria
- Servicing accounts of a few thousand to millions of devices



OUR JOURNEY WITH ESRI

- **2013** – Live device status via ArcGIS Desktop/Server
- **2015** – Attributions for Subscriber, Services, Network data, “In Home” Devices and Billing.
- **2016** – Integration to Esri Network Design Partners
- **2017** – Integrated Esri Dashboards
- **2019** – Leveraging cloud-based Esri for system of record, insights and engagement.

Assisting Telecom Customers

- Manage Operations **Cost & Efficiency** via remote monitoring
- Customer Satisfaction - Identify & Resolve **proactively**
- **Cloud-based**, “Single Pane of Glass” experience



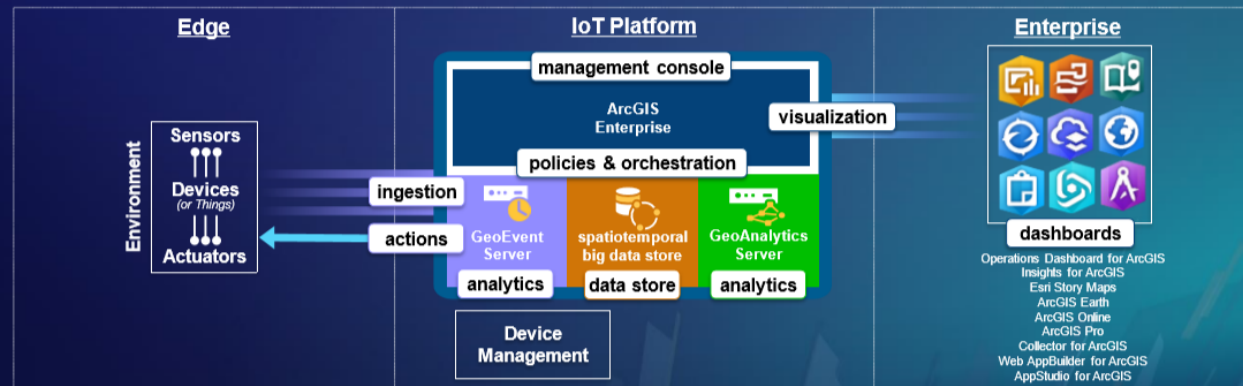
DEVELOPMENT OF ETI INTEGRATION TO ESRI



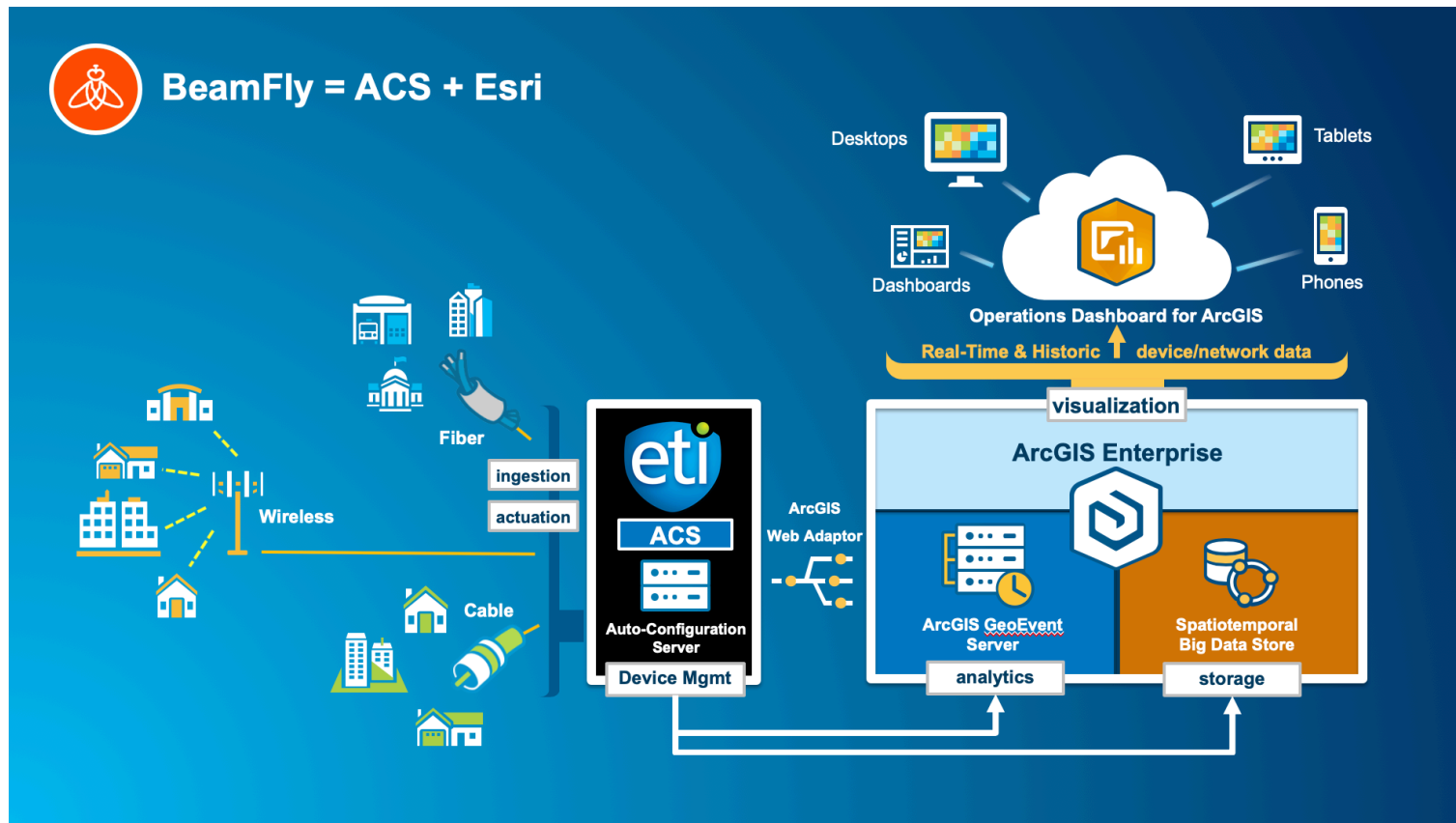
ArcGIS as an IoT Platform

enabling geospatial insights with your IoT solution

- An ArcGIS based IoT Platform & Enterprise consists of the following capabilities:
 - **Ingestion:** GeoEvent Server input connectors
 - **Batch Analytics:** GeoAnalytics Server
 - **Streaming Analytics & Policies:** GeoEvent Services
 - **Management Console:** Portal & GeoEvent Manager
 - **Actions (including Actuation):** GeoEvent output connectors
 - **Visualization:** Map & Feature Services
 - **Data Store:** spatiotemporal big data store
 - **Dashboards:** Operations Dashboard, Insights, Story Maps
 - **Device Management:** for those requiring this functionality another IoT platform can be complemented with ArcGIS.



HOW IT WORKS

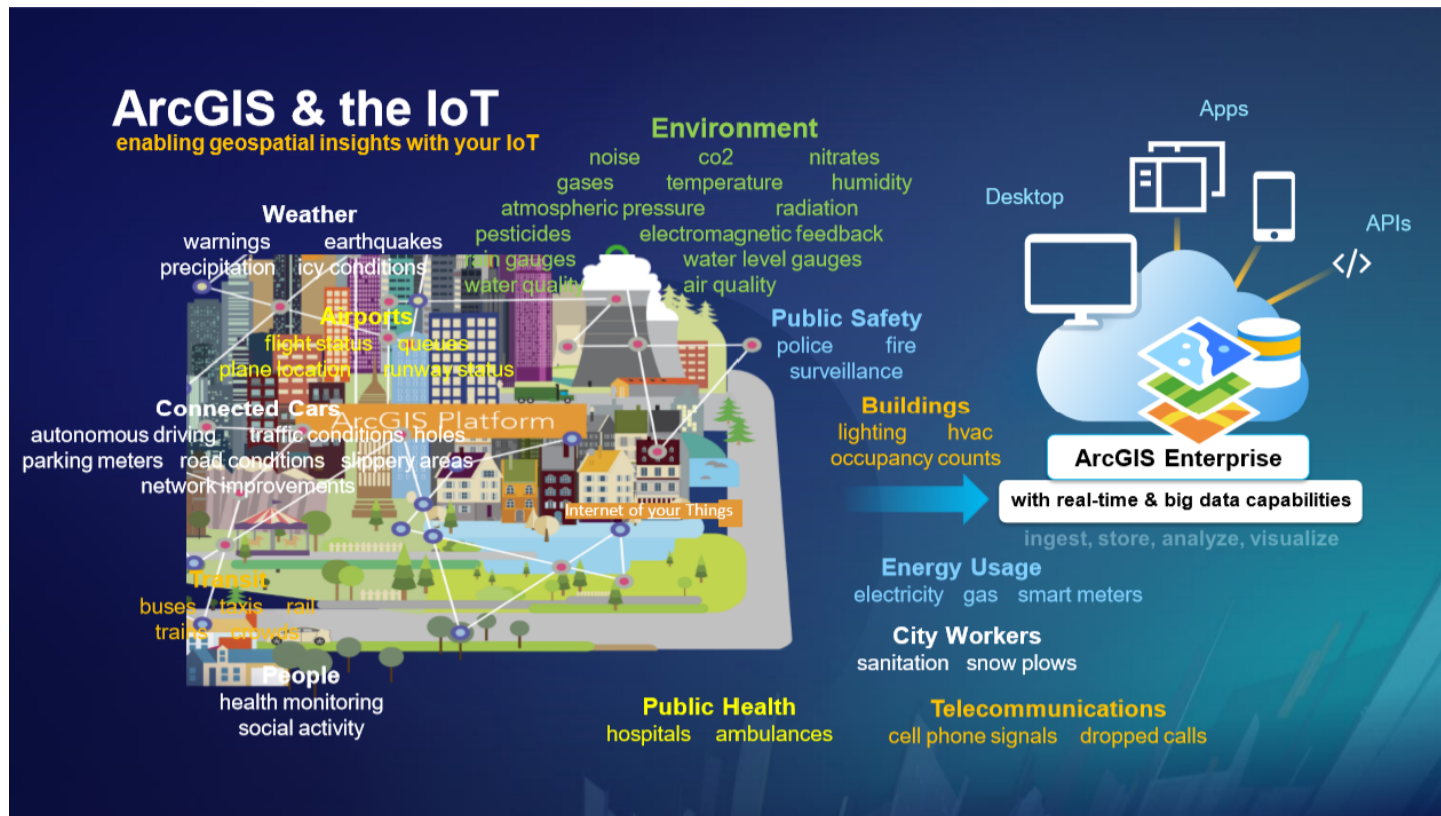


VALUE FOR ESRI DISTRIBUTORS

- Esri “door opener” into **Telecom Operational Groups**
- **Partnership** (ETI/Esri) Real-Time-Device Monitor
 - ETI has built the Integration to Esri (2019)
 - Monitor all active devices and services for Telecoms
 - Cloud-based, remotely managed or On Premise
- Allows Esri to **increase their sustainability** in Telecoms:
 - Long-Term Enterprise Licensing (ELAs)
 - GeoEvent Server Deployments
 - Spatial Temporal Big Data Store (DB)
 - ArcGIS for IoT, cloud-based Services
 - Increase User Licenses in the NOC and Field Crews



ROADMAP: MANAGING SMART CITIES





Beamfly Product Team

Greg Aston

Product Director - ACS

greg.aston@etisoftware.com

Jacob Caldwell

GIS Analyst

jcaldwell@etisoftware.com

Brad Hine

Product Director - Analytics

bhine@etisoftware.com