

Project Name	Type
Catalog #	Date

# ADJUSTABLE CABLE HANGER

## Y-TOGGLE



### APPLICATION

- Recommended for the suspension of hanging luminaires in an indoor application.

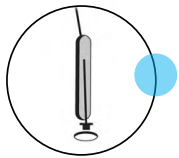
### APPROVALS:

- UL Listing - UL1598 Luminaire Fittings
- CSA - Class 3426-01 Luminaire Fittings

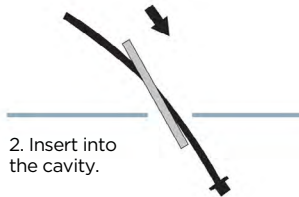
### FEATURES

- Safe-working load at 5:1 safety factor.
- Tool-less adjustment.
- Replaces threaded rod; no sawing, filing or fixing nuts.
- Reduces installation time by 80%.
- No need for additional bracketry.

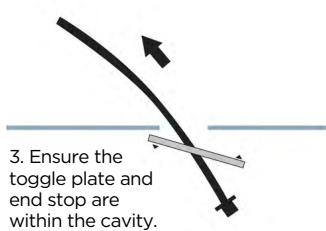
### GENERAL INSTALLATION



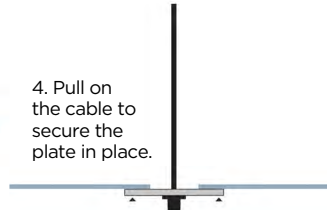
1. Push the toggle plate so that it lies almost vertical against the cable.



2. Insert into the cavity.



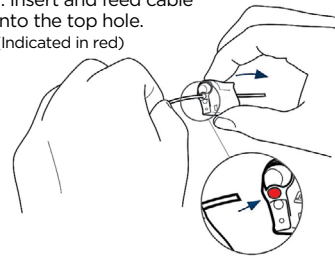
3. Ensure the toggle plate and end stop are within the cavity.



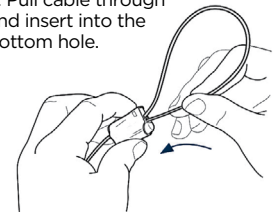
4. Pull on the cable to secure the plate in place.

### GRIP DEVICE ADJUSTMENT

1. Insert and feed cable into the top hole. (Indicated in red)



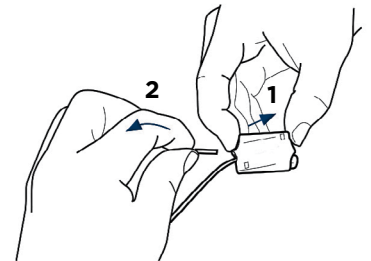
2. Pull cable through and insert into the bottom hole.



### GRIP DEVICE RELEASE

1. Push in button to release.

2. Adjust cable to necessary length.



Note: Please Specify Sizes When Ordering From Customer Service.

### MATERIAL SPECIFICATION

**Fastener:** Housing: Zinc  
 Wedges: Steel  
 Springs: Stainless Steel  
 End Cap: Acetal Copolymer  
 Push Button: Acetal Copolymer

**Cable:** Galvanized high tensile steel cable to EN12385

**Y-Assembly:** 12" legs are standard. Other lengths by request.

**Toggle & End Stop:** Zinc plated Steel

**Crimp/Ferrule:** Aluminum