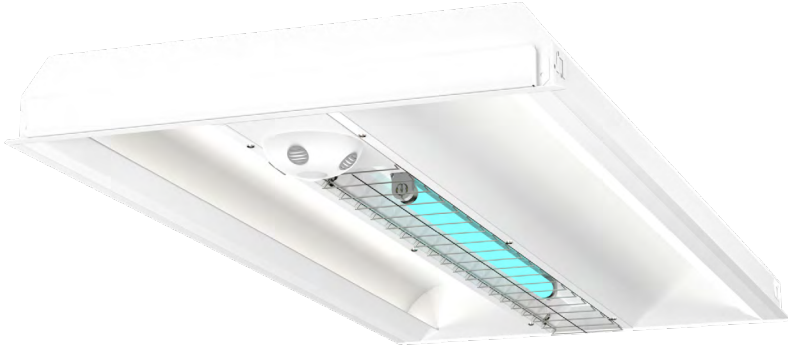


Project Name	Type
Catalog #	Date

UV-C HYBRID INDIRECT LED TROFFER

UVCTN

vega^{uv-c} specular reflector material is tuned to reflect and amplify UVC wavelengths - boosting the irradiance by 42%.



2x4 pictured with optional wire guard

APPLICATIONS

- Hospitals
- Educational Facilities
- Clinics
- Office Spaces
- Conference Rooms
- Municipal Facilities
- Financial Institutions
- Hospitality Areas
- Designed for unoccupied spaces

APPROVALS

- Tested to UL1598 and CSA C22.2#250.0.0:2008
- BAA Compliant
- RoHS Compliant
- XtraLight is an EPA registered establishment
- Appropriate parts/test guidelines were performed by ATAL www.ata-labs.com

FEATURES

- UVC lamps are activated by occupancy sensors while room is vacant. LED's are illuminated during occupancy.
- Single troffer fixture that delivers both UVC disinfection and White LED light with comfortable, low glare illumination
- vega^{uv-c} high-reflective material by Almeco is designed to accelerate the sanitizing power of UVC wavelengths
- Uses one or two quartz glass germicidal UVC lamp (254 nm wavelengths) with ceramic caps with easy lamp replacement
- Antimicrobial white polyester powder coat post painted
- Secure wire guard for lamp protection
- Tool less access to plenum

CONSTRUCTION

- Housing is 22 gauge white matte steel
- LED source is indirect
- End caps riveted to housing for strength and rigidity
- Driver & UVC ballast are accessible from plenum
- Roll form body to provide volumetric appearance
- Single switch or dual switch wiring available. Dual switch is for UVC with independent control.

UVC

- 254 nm wavelength
- Irradiance (on center): Starting at .065 mJ/cm²
- Produces no ozone or other secondary contaminants

ELECTRICAL

- Voltage: 120V-277V AC input
- LED Driver: 24VDC Class 2, constant current, electronic power supply factory calibrated to LED modules. 120V with 0-10V dimming as standard on LEDs
- Best In Class LEDs: 3000K, 3500K, 4000K, and 5000K, CCT (min 80 CRI)

ACCESSORIES

- Recessed troffer flange kit available, ordered separately (consult factory)
- Occupancy sensor lighting control with both PIR and ultrasonic sensors up to 1000 sq ft
- Optional wire guard over UVC lamps
- Tamper proof screws option available (consult factory)

WARRANTY

- Fixture backed by XtraLight's UV warranty

ORDER LOGIC

SAMPLE CATALOG NUMBER: UVCTN24-2000L- 1FT-40K-DIM-SW-WG

UVCTN	SIZE	MODEL	UVC LAMP	CCT	DRIVER	WIRING	OPTIONS
22 ¹ 2x2	2000L	1 ft ¹	30K 3000K	DIM ³ Dimmable 0-10V, 120V	SW Single Switch Wiring	WG UVC wire guard	
	3500L	2 ft ²	35K 3500K		TP ⁴ Tamper proof fasteners		
24 ² 2x4	3000L		40K 4000K		DW Dual Switch Wiring	OSC Integrated Occupancy Sensor	
	4000L		50K 5000K				
	5000L						

1. 22 only available in 2x2, 2000 or 3500L, and 1ft UVC Lamp
 2. 24 only available in 2x4, 3000L, 4000L, or 5000L and 2 ft UVC Lamp
 3. LEDs Only
 4. Available when wire guard is selected as an option

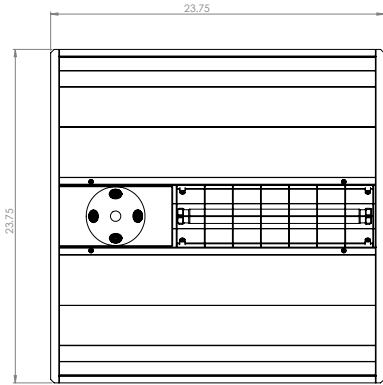
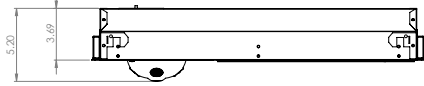


UV-C HYBRID INDIRECT LED TROFFER

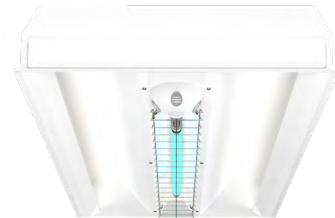
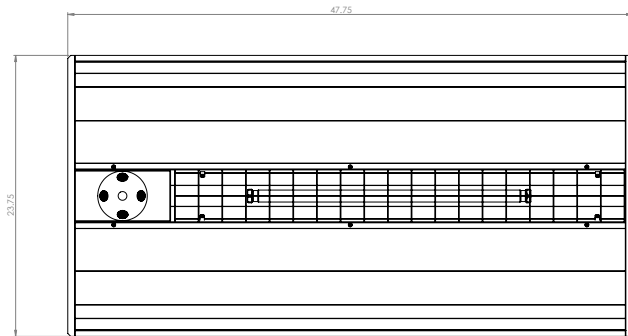
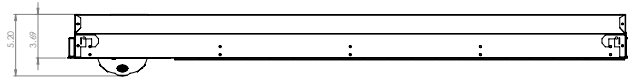
UVCTN

DIMENSIONAL DATA

2X2 SIZES SHOWN



2X4 SIZES SHOWN



PHOTOMETRIC DATA

LED PERFORMANCE

MODEL	CCT	LUMENS	SYSTEM WATTS	LM/W
2x4 3000L	4000K	3015	31	81.55 LPW
2x4 4000L		4020	42	74.38 LPW
2x4 5000L		5025	53	97.25 LPW
2x2 2000L		2365	29	95.71 LPW
2x2 3500L		3496	47	94.81 LPW

LUMEN MULTIPLIER VS CCT

CCT	MULTIPLIER
3000K	93.7%
3500K	98.3%
4000K	100.0%
5000K	98.0%



WORKING HARDER. LIGHTING SMARTER.®

UVCTN
200212

www.XLM.com • (800) 678-6960 • customerservice@XLM.com

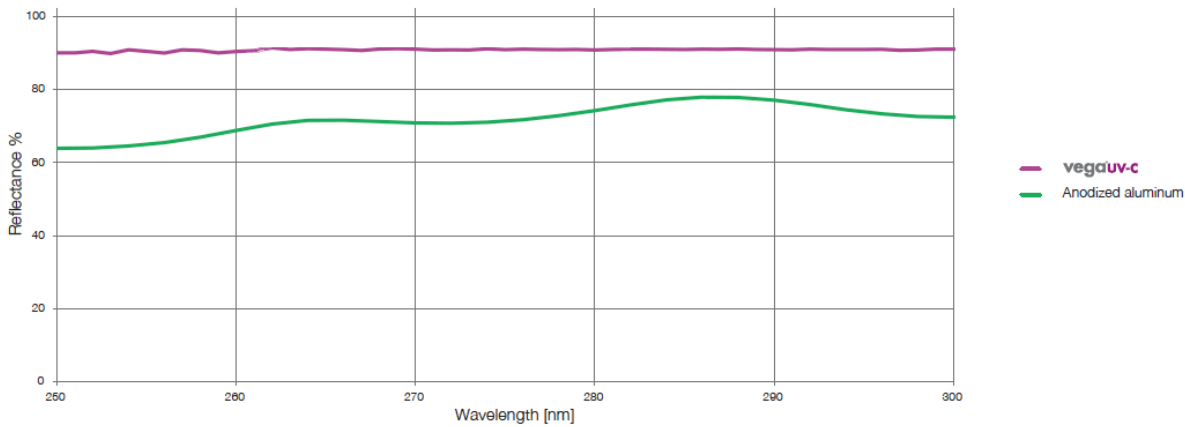
All information is believed to be accurate at the time of publication. Please contact customer service or visit www.XLM.com for the most updated product specifications. XtraLight® reserves the right to change specifications without notice.

UV-C HYBRID INDIRECT LED TROFFER

UVCTN

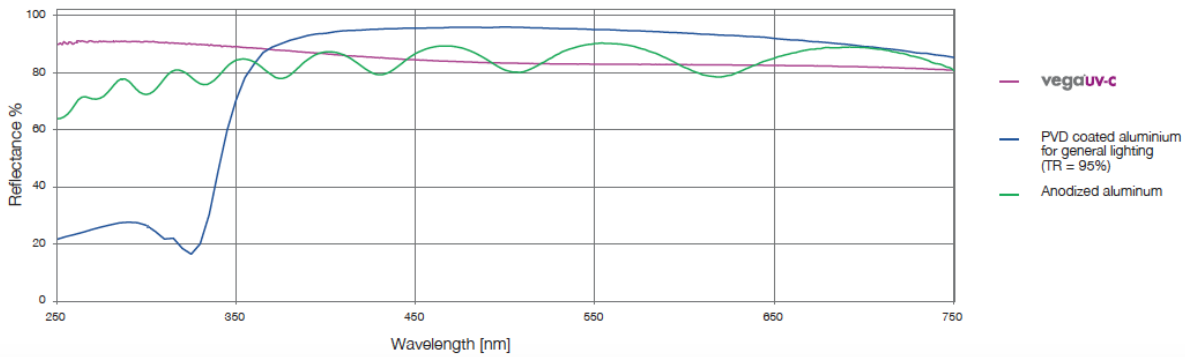
REFLECTIVE MATERIAL DATA

SPECTRUM UV-C EFFECTIVENESS



Reflective Material **performance** when compared to other reflective material

COMPARISON REFLECTANCE SPECTRA OF DIFFERENT MATERIALS



WAVELENGTH	TYPICAL	STANDARDS
vega®uv-c hemispheric reflectance @245 nm	90% ± 2%	-

PRECAUTIONS

- DO NOT USE ON HUMANS OR PETS
- INDOOR USE ONLY

CAUTION: Observe basic safety precautions including the use of personal protective equipment (PPE) while operating and handling the system. Please read and follow all instructions, warnings, and safety notices. Do not expose skin or eyes to direct or indirect UVC rays as UVC energy can be harmful to these areas.

WARNING: To guard against damage, please follow observe basic safety precautions including: Wear protective gear when operating and handling the system including the following Personal Protective Equipment (PPE): goggles, gloves, and face shields. Please read and follow all documents including: [Operational and Maintenance Guide](#), all instructions, warnings, and safety notices. Do not expose skin or eyes to direct or reflected UVC rays as they can be very harmful to these areas.

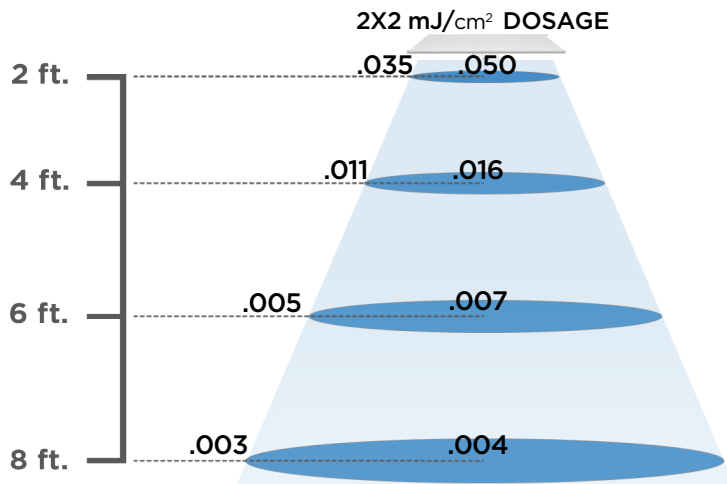
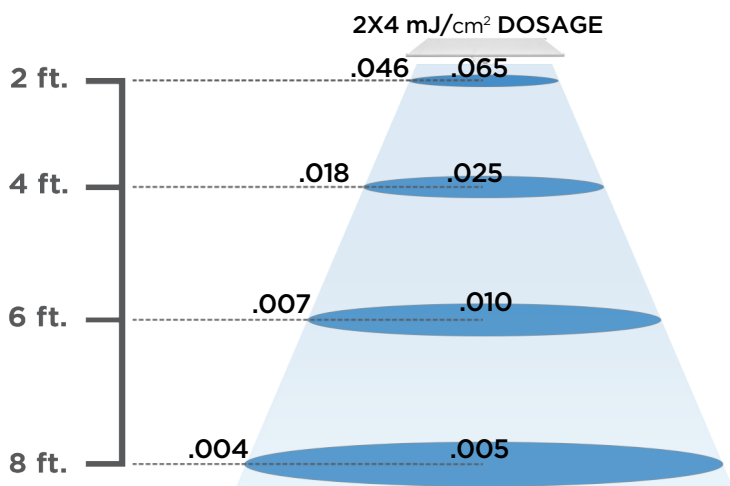
UV-C HYBRID INDIRECT LED TROFFER

UVCTN

IRRADIANCE VALUES

Radiant Exposure Dosages

MODEL	DISTANCE	CENTER	OFF-CENTER
2x4	2 ft.	.065 mJ/cm ²	.046 mJ/cm ²
	4 ft.	.025 mJ/cm ²	.018 mJ/cm ²
	6 ft.	.010 mJ/cm ²	.007 mJ/cm ²
	8 ft.	.005 mJ/cm ²	.004 mJ/cm ²
2x2	2 ft.	.050 mJ/cm ²	.035 mJ/cm ²
	4 ft.	.016 mJ/cm ²	.011 mJ/cm ²
	6 ft.	.007 mJ/cm ²	.005 mJ/cm ²
	8 ft.	.004 mJ/cm ²	.003 mJ/cm ²



For more information on
UV-C Systems

