



# Cutover's Cloud Migration Dashboard

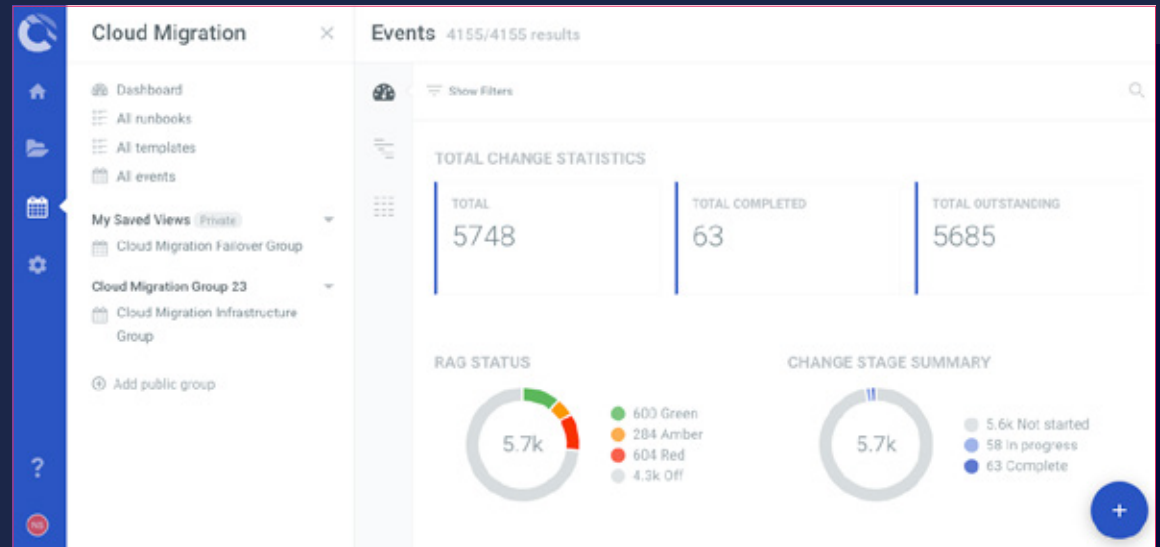
**When moving workloads to the cloud, visibility is vital to ensuring a smooth migration**

A key component of Cutover's cloud migration offering is the cloud migration dashboard, which gives you a real-time view of all your cloud migration events in Cutover, on a single screen. With the

cloud migration dashboard, users get a high level view of all migration events with the ability to drill down into each element, as well as any associated runbooks for more detail. You can stay informed by accessing live updates without disturbing operations.

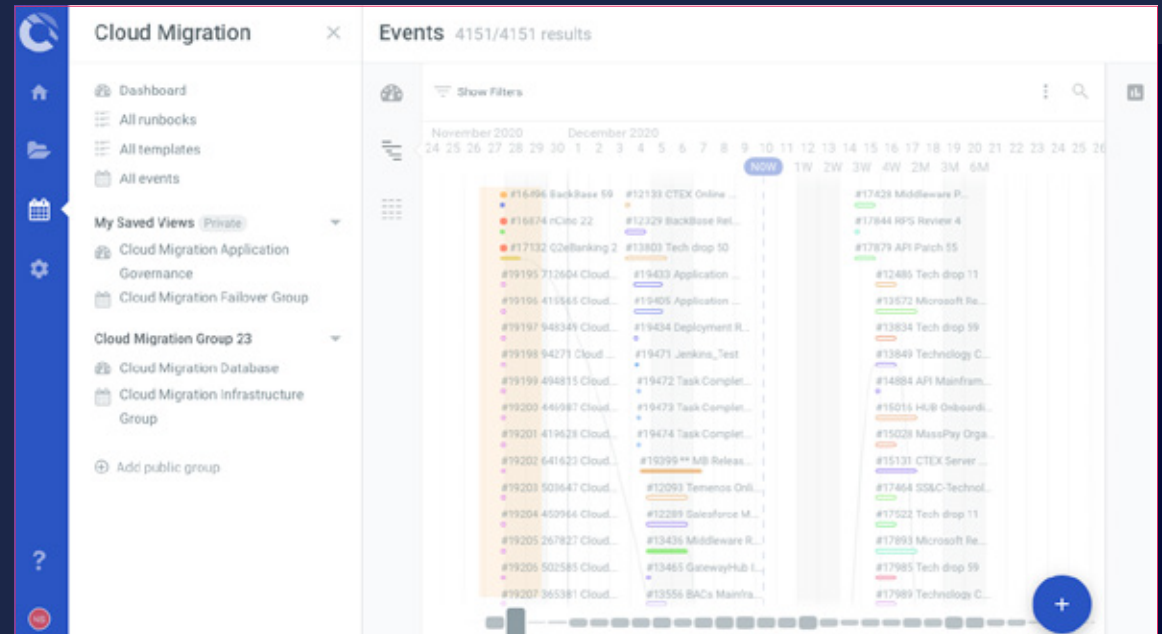
# Monitor the progress of your cloud migration

You have total transparency of your migration plan, with the visualization you need to coordinate, optimize and de-risk upcoming waves. You get a high level view of your migration schedule and can drill down into each area for more detail about pre-requisites and pre-migration checklists.



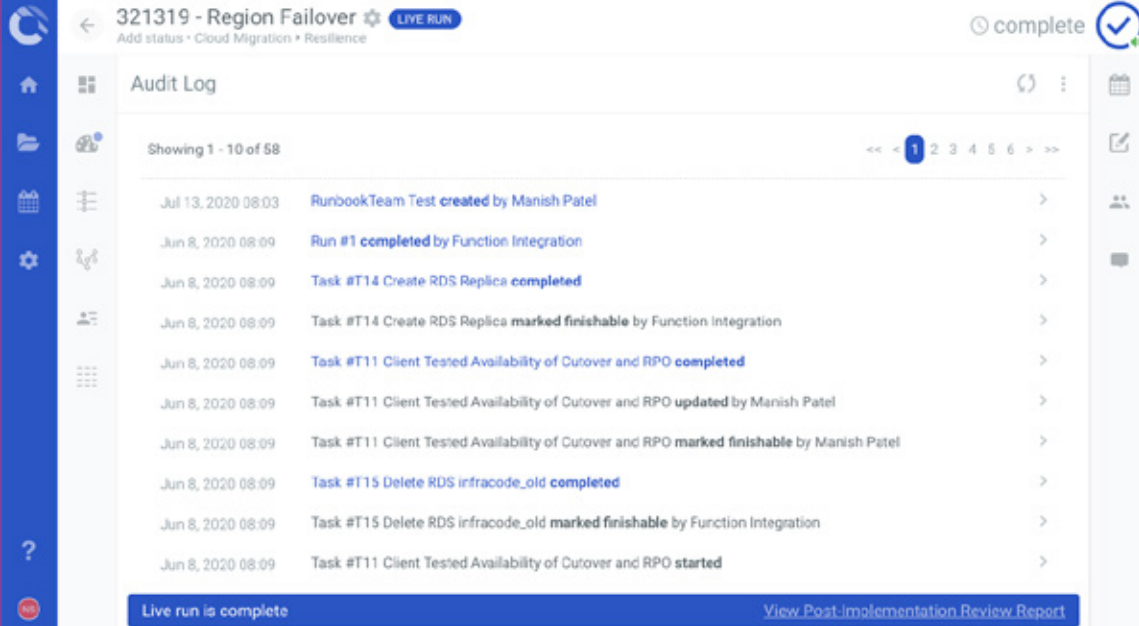
# Identify areas that require immediate attention

Monitor how your team is executing migration plans through status of tasks and progression of events to identify areas that need your attention. This enables you to proactively address issues and get back on track quickly.



# Continuously improve your internal processes

Comprehensive analysis and audit of each stage of your migration enables you to continuously improve your processes. You can look back at completed events to see the volume and efficiency over a period of time, and determine where improvements can be made.



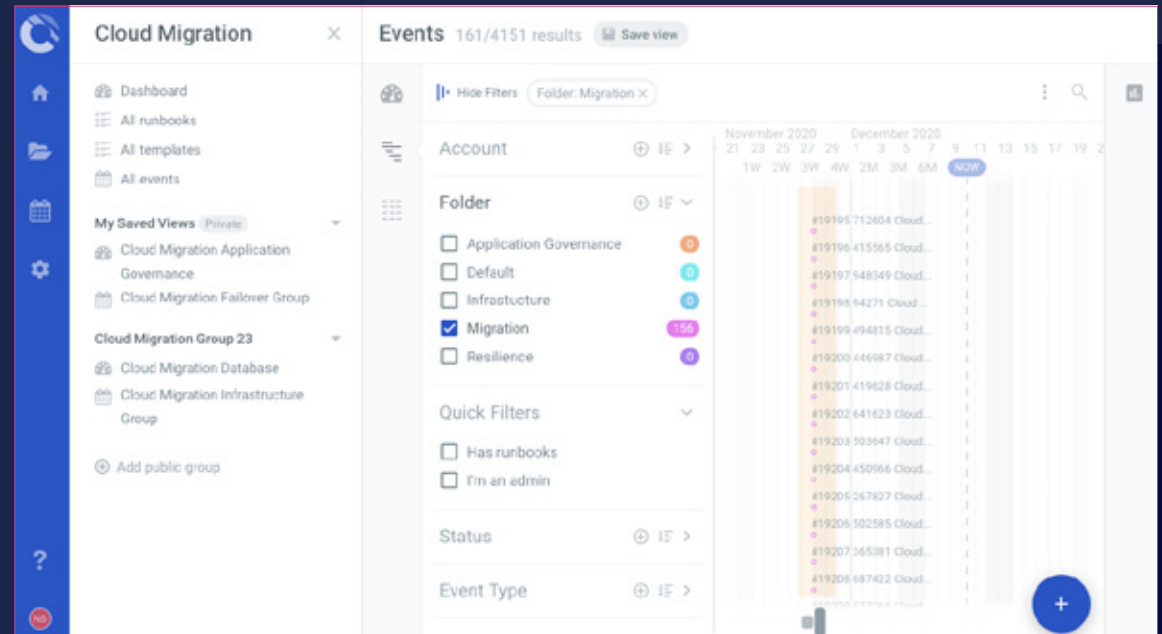
The screenshot displays the AWS Migration Hub Audit Log for a migration instance named '321319 - Region Failover'. The interface shows a list of tasks with their timestamps and completion status. A blue banner at the bottom indicates 'Live run is complete' and provides a link to 'View Post-Implementation Review Report'.

Timestamp	Task Description	Status
Jul 13, 2020 08:03	RunbookTeam Test created by Manish Patel	Created
Jun 8, 2020 08:09	Run #1 completed by Function Integration	Completed
Jun 8, 2020 08:09	Task #T14 Create RDS Replica	Completed
Jun 8, 2020 08:09	Task #T14 Create RDS Replica	Marked finishable
Jun 8, 2020 08:09	Task #T11 Client Tested Availability of Cutover and RPO	Completed
Jun 8, 2020 08:09	Task #T11 Client Tested Availability of Cutover and RPO	Updated
Jun 8, 2020 08:09	Task #T11 Client Tested Availability of Cutover and RPO	Marked finishable
Jun 8, 2020 08:09	Task #T15 Delete RDS infracode_old	Completed
Jun 8, 2020 08:09	Task #T15 Delete RDS infracode_old	Marked finishable
Jun 8, 2020 08:09	Task #T11 Client Tested Availability of Cutover and RPO	Started



# Customize your view

You can customize your view based on what matters to you. Whether you're a business stakeholder who needs to see the high level migration schedule or whether you're orchestrating a set of migration waves and want to know if they are on track, you get the visibility you need to ensure success of your work.





**cutover**

For more information on Cutover's cloud migration dashboard, contact your customer success manager



or email us at [info@cutover.com](mailto:info@cutover.com)



For news & updates connect with us on [LinkedIn](#) or follow us on [Twitter: @gocutover](#)

[www.cutover.com](http://www.cutover.com)