

G NEMA CONTROLLER CABINET

TS 2 Type 1



Cabinet shown powder coated
Forest Green outside and white inside

CABINETS

CONTROLLERS

DETECTION

PARKING

SIGNALS

SIGNS

SOFTWARE

SPECIALTY

Overview

McCain's G NEMA Controller Cabinet meets all the functional requirements of the National Electrical Manufacturers Association (NEMA) TS 2 v 02.06 cabinet specification, affording all the flexibility and advanced features of the NEMA TS 2 design. In addition, this cabinet, a Caltrans Type "G," supports the 2070L N2 controller requirements making it compatible with that controller as well. Built with two compartments, an upper cabinet and a lower pedestal cabinet, both with full size doors, the interior of this cabinet is easily accessible. In addition, Unistrut mounting channels on all interior walls of the cabinet make it a versatile choice to fit your requirements.

Benefits

- Compact size
- Upper and lower compartments
- Meets NEMA TS 2 Type 1 specification
- Compatible with NEMA TS 2 controller
- Compatible with 2070L N2 controller

Product Description

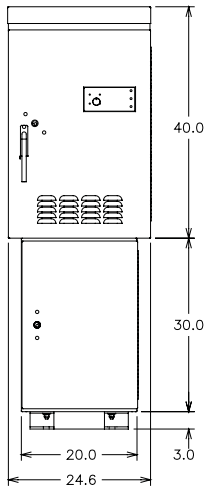
The McCain G NEMA Controller Cabinet's small size and support of both the 2070L N2 controller and the NEMA TS 2, Type 1 controller make it a compact and versatile cabinet. Complete with two compartments and a separate pedestal base, the full doors on the two compartments make setup and maintenance of this cabinet easy.

This cabinet is designed with an 8-position load bay that can be configured in any combination of traffic phases, pedestrian phases, or overlaps. Also included in this G cabinet are a 6-position detector rack (two-channel), as well as two Bus Interface Units (BIU), and a Malfunction Management Unit (MMU).

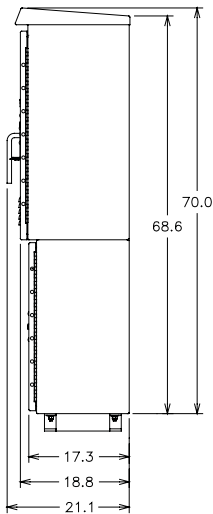
A police door and four-switch panel offer several types of operation overrides. A thermostatically controlled fan ventilates the cabinet while a filter behind the louvered upper door vents prevents dirt from permeating the cabinet's air supply.

G NEMA Cabinet TS 2 Type 1

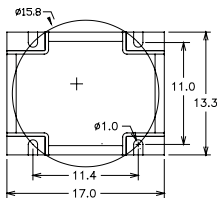
Front



Side



Bottom



Dimensions rounded to the nearest 0.1"

Standard Features

- 8-position load bay configurable in any combination of traffic phases, pedestrian phases, or overlaps
- Police door with Auto/Manual and Auto/Flash switches and manual advance switch with 6' cord
- Switch panel with Auto/Flash, Signals On/Off, Stop Time, and Controller On/Off switches
- Cabinet light on flexible arm with manual on/off switch and door switch
- Main circuit breaker, 30A, 250V
- GFI convenience outlet, 20A, in upper cabinet
- Duplex receptacle, 15A, surge protected, in pedestal cabinet
- All terminals are barrier type
- Alarm door switch

Assemblies & Components

- Detector Rack, 6-position, (4) 2-channel, (2) Opticom, with BIU (Bus Interface Unit)
- BIU (separate unit mounted on back panel)
- Load Bay, 8-position with flasher unit socket
- SDLC bus, 7-position
- MMU (Malfunction Management Unit), 16-channel
- Flash transfer relay sockets (4)
- Cabinet power supply, TS 2

General Specifications

Dimensions:	Upper Cabinet - 40" H x 24.6" W x 18.8" D Pedestal Cabinet - 30" H x 20" W x 17" D Pedestal Cabinet Base - 3" H x 17" W x 13" D (rounded to the nearest 0.1")
Material:	5052-H32 aluminum, 0.125" thick (except Unistrut channels - 6063-T5 aluminum)
Finishes:	Natural, powder coat (standard, anti-graffiti, and custom colors), anodized
Doors:	Upper Cabinet - Front door (1), full size Pedestal Cabinet - Front door (1), full size
Latching System:	Upper Cabinet - 3-point with choice of Corbin or Best lock Pedestal Cabinet - choice of Corbin or Best lock
Handles:	3/4" round, stainless steel, with padlock feature (upper cabinet only)
Door Stops:	90° and 180° ($\pm 10^\circ$), bottom (upper cabinet only)
Rack Assembly:	Vertical Unistrut type channels (2) on each of 3 interior walls in upper and pedestal cabinets, horizontally adjustable.
Ventilation:	Thermostatically controlled 100 CFM fan, louvered air intake in door, pleated filter
Mounting:	Base Mounted
Shipping Weight:	222 lbs without plug-ins or controller(s)