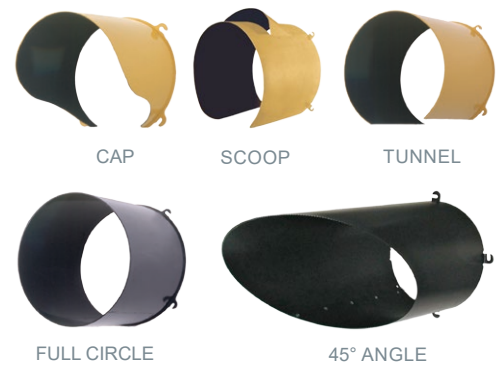


SWARCO McCain SIGNAL VISORS

ALUMINUM
POLYCARBONATE
CAP
FULL CIRCLE
SCOOP
TUNNEL
45° ANGLE



McCain Signal Visors increase signal visibility in sunlight while still allowing an unobstructed view for multiple lanes of approaching drivers, cyclists, and pedestrians. SWARCO McCain, Inc. produces a range of standard and angled visors including cap, full circle, scoop, and tunnel that offer a variety of signal viewing angles. Whether you are looking for aluminum or polycarbonate, federal yellow, signal green, black, or custom colors, SWARCO McCain, Inc. has the visors to meet any need.



KEY BENEFITS

- Increases signal visibility in sunlight
- Provides a solution for every need with a variety of materials, sizes, styles, and angle options
- Easy installation

PRODUCT DESCRIPTION

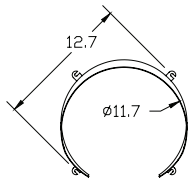
McCain Signal Visors, molded polycarbonate or stamped and formed aluminum, are available in 8 inch and 11 inch signal configurations. Integrally formed, twist-on mounting tabs make installation and maintenance a snap, and a standard three degree downward tilt facilitates signal visibility.

Specialty visors include a 45° angle and scoop visor. The 45° angle visor comes in two standard lengths, 18 inch and 27 inch and in right and left versions. It's design narrows visibility for locations such as angled intersections.

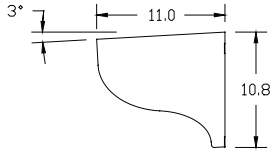
The scoop visor is designed to resist snow build-up on signal lenses in colder climates. A louvered vent on top and an open bottom contribute to the increased vertical movement of air across the face of the signal lens, thereby increasing resistance to the deposit of snow.

McCain SIGNAL VISORS

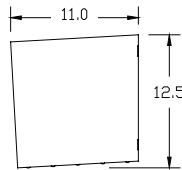
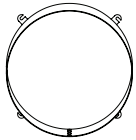
CAP
FRONT¹



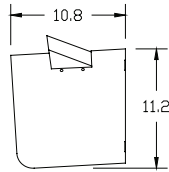
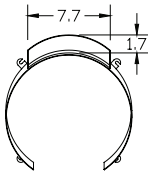
SIDE¹



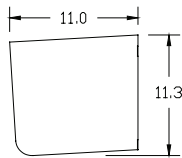
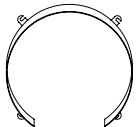
FULL CIRCLE



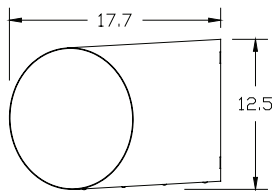
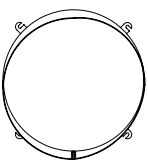
SCOOP



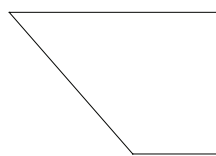
TUNNEL



45° (18" RIGHT ANGLE VIEW)



TOP



STANDARD FEATURES

- One-piece construction²
- Twist-on mounting tabs
- 3° downward tilt

GENERAL SPECIFICATIONS

	CAP	FULL CIRCLE	SCOOP	TUNNEL	45° ANGLE
Dimensions ³ :		8"DIA x 8"D 11"DIA x 11"D			8"DIA x 18"D 11"DIA x 18"D 11"DIA x 27"D
Degree of Tilt:	3° (down)				
Material:	Aluminum ⁴ : Type 3003, 0.050" thick Polycarbonate ⁵ : Ultraviolet and heat stabilized, flame retardant, permanently colored, 0.10" nominal thickness				
Finishes:	Aluminum: Powder coated Polycarbonate ⁵ : Colored resins integral to visor				
Color(s):	Exterior: Federal yellow, signal green, black, or custom Interior: Flat black				
Mounting:	Twist-on tabs				
Shipping Weight ⁶ :	1-4 lbs.				

OPTIONS

- Additional lengths available
- Degree of tilt

¹All visors shown are 11" signal versions. Dimensions shown in Cap front view and degree of tilt shown in Cap side view are typical of all 11" visors, except 45° visor

²Except scoop visor

³Dimensions listed as diameter by depth; rounded to the nearest inch

⁴Aluminum provides very good corrosion resistance

⁵Standard visors only

⁶Varies based on material, size, and style