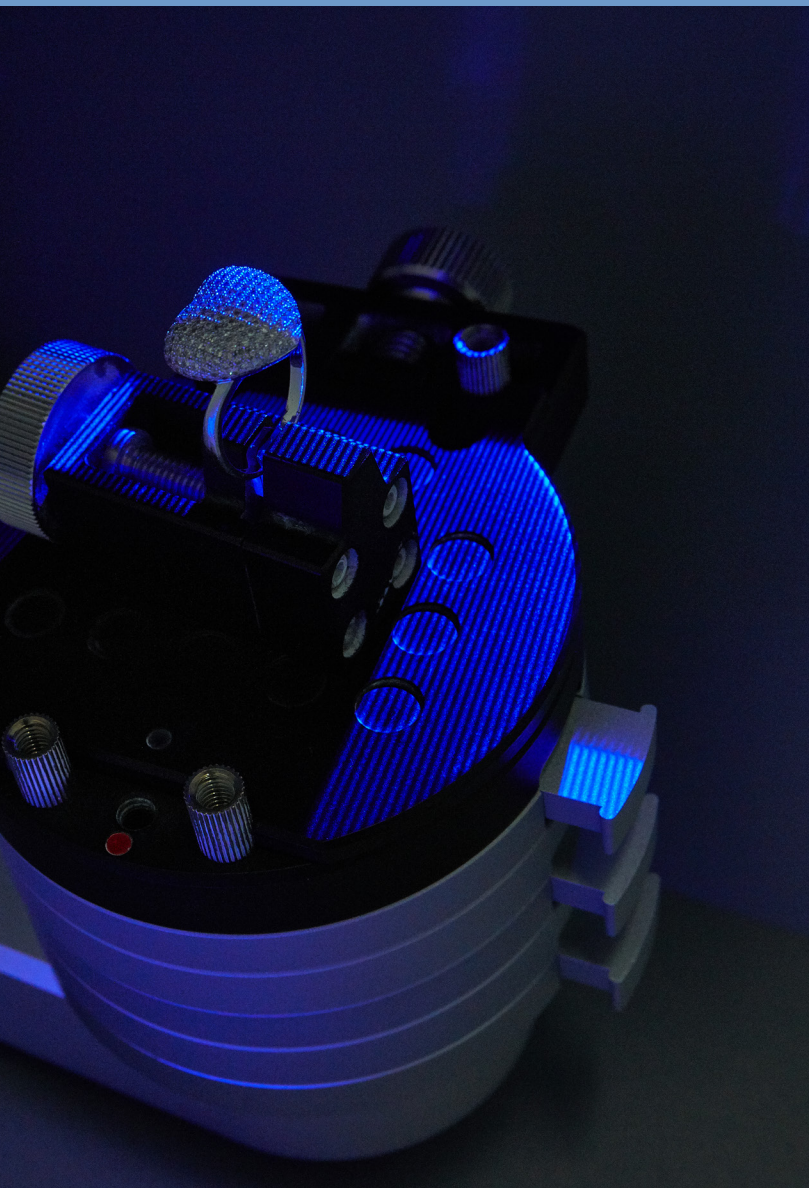


Precise, Flexible, Convenient **Solutionix D-Series**

The Solutionix D-Series is a professional 3D scanner system specifically designed to scan small objects with complex shapes that require fine details to be scanned with utmost precision.

High-Speed, High-Quality Scanning for Small Objects

The Solutionix D-series is a range of fully automated tools specifically designed to scan small models. The technical specifications of the D-series are calibrated to meet the high level of detail required by both industrial and non-industrial users in various applications ranging from jewelry to cultural artifacts.



Color Texture Mapping

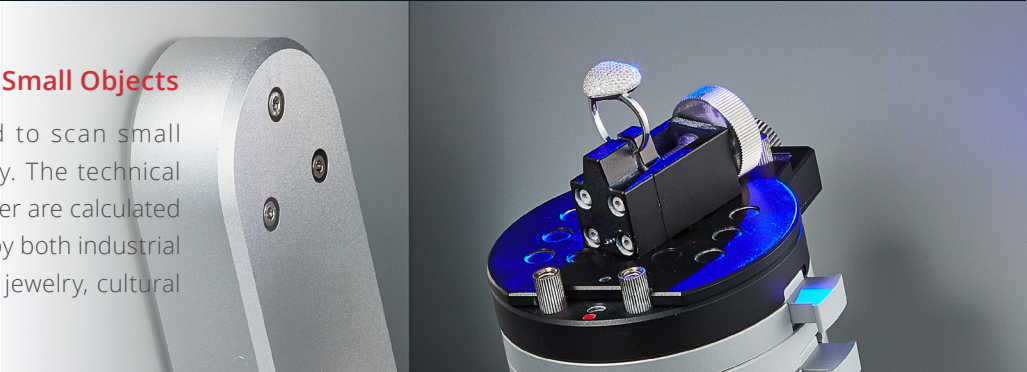
The Solutionix D-series may be used in quality inspection or reverse engineering because of its ability to acquire high-precision scan data easily and quickly. Its added functionality, to acquire high-resolution color information, makes it easy to utilize it in 3D printing, CG, and web-based real 3D data fields.

High-Quality and Easy-To-Use 3D scanners

Solutionix industrial 3D scanners provide highly accurate and precisely detailed 3D measurement data using Blue LED scan technology and high-resolution twin-cameras, enabling users to enjoy a quick and easy metrology experience.

Quality and Rapid 3D Scanning for Small Objects

The Solutionix D-Series was created to scan small models in a completely automated way. The technical specifications of the D500 & D700 scanner are calculated to meet the high level of detail required by both industrial and non-industrial applications such as jewelry, cultural artifacts and design.



Automatic Scanning and Active Synchronization

3D scanning does not always need much effort. With a single mouse click, users can get their object scanning jobs done very easily and quickly. Another mouse click actively synchronizes the model and camera views, enabling users to navigate to any scanning position, adding more scans where required.



Automatic Calibration

Once the calibration panel is installed, clicking the calibration wizard will guide you through an automated calibration process. The previous manual calibration process may have been difficult for users to follow. With automatic calibration, you will experience a genuinely user-friendly and convenient system with maximum accuracy for ease of mind.



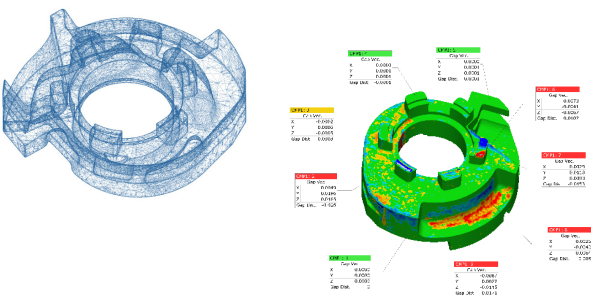
Maximum Convenience

In order to maximize convenience, the D-series was designed as a portable desktop scanner. It can be easily assembled and placed on office desks or any convenient surface. Users can perform scanning tasks without having to move away from the desk area.



Optimum Solution for Various Applications

The Solutionix D-Series is optimized for scanning small, complex geometries. With more powerful scan engines and optimized algorithms, scan speed is dramatically improved, allowing users to experience differentiated work efficiency.

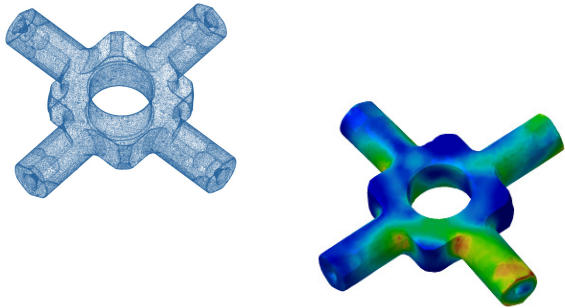


Quality Inspection

Compare measurements between the D-series and the nominal CAD model. Create color-coded deviation maps of any errors in 3D.

> Applications

- 3D correction and improvement
- Turbine blade inspection
- Geometric dimensioning and tolerancing (GD&T)

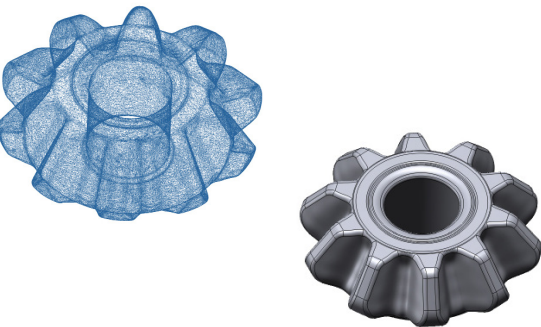


Analysis

Identify and find solutions to any potential structural or functional defect by modeling the system or product in a virtual environment.

> Applications

- Digital simulation
- Computational fluid dynamic (CFD)
- Finite element analysis (FEA)

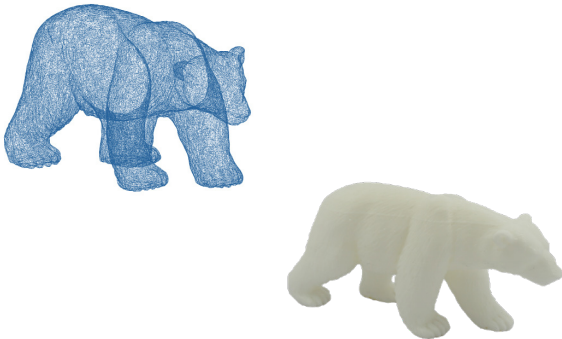


Reverse Engineering

Reverse engineer free-form surfaces and geometric objects from point cloud data back to a variety of native CAD formats.

> Applications

- 2D Drawing, 3D Modeling
- Styling and design modifications, system engineering
- Tooling design and manufacturing



Scan to 3D Printing

Produce detailed pieces using various materials with seamless data integration.

> Applications

- Rapid prototyping
- Direct manufacturing
- Healthcare
- Entertainment

ezScan 2017

Intuitive and Easy-to-Use Scan Software

ezScan provides a step-by-step process. Three easy steps, 'Scan', 'Align', and 'Merge', make for effortless 3D scanning. Its key features are represented by intuitive icons. Additionally, ezScan 2017 has enhanced data editing and processing capabilities. So many attractive options have been added that even beginners to 3D scanning can use it easily.

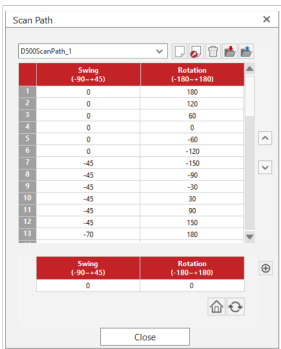
Automatic Scanning Process

With the Solutionix D-series, you can automatically set the brightness with one click of the mouse; no need to set the brightness of the scan object beforehand. The 'Batch Process' function also allows users to perform all functions from scanning to data extraction in one go, providing an easy and convenient scanning experience.



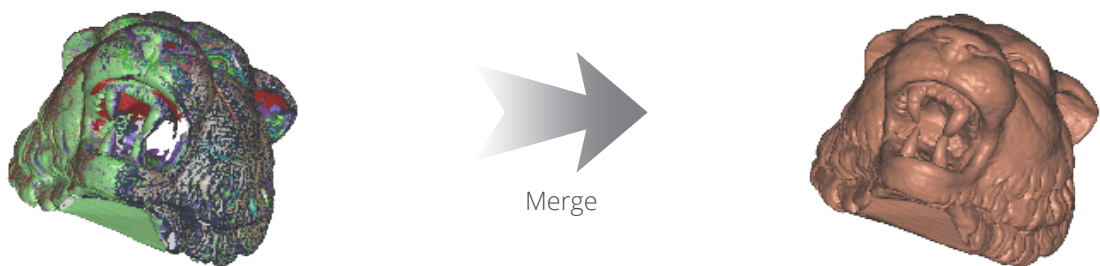
Easy Scanning Path Generation

Different scan objects require different scanning paths depending on their complexity. The flexibility of the scanner in terms of path generation makes it easy for users to create their own scanning paths, allowing repeated data collection for various object sizes and shapes.



Enhanced Scan Data Processing

Obtaining scan data from objects with deep and narrow crevices presents particular challenges. Using the 'Data Merge' function allows recovery of file details from noisy or sparse scan data in addition to intelligent detection and automatic filling of any gaps in the scan data.



API for Customized Integration

Users can use the API provided by Solutionix to control the D-Series and process its scan data. Alternatively, users have the flexibility to create their own scan application programs using various software and plug-in processes. The scanner head can also be used separately for various application fields and can be attached to the robot arm or other instrumental devices.

Simple, Smart yet Powerful

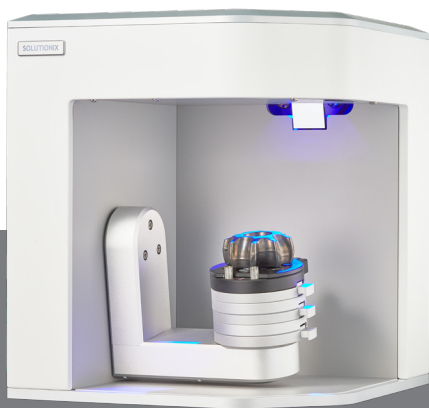
Solutionix D-Series

Making 3D scanning an Enjoyable Experience

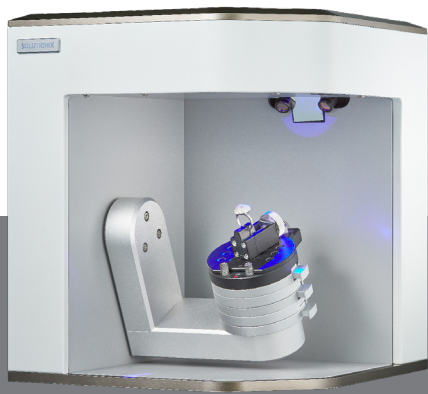
With the use of dual cameras of 2.0MP (Solutionix D500) and 6.4MP (Solutionix D700) resolution, and a 2-axis arm, users can perform multi-angle scanning which reduces the noise of scan data and minimizes blind spots.

For Small and Intricate Objects

- Advanced blue light scanning technology
- An intuitive active sync function
- Fast and easy to use scanning process-scanner specifications



Solutionix D500



Solutionix D700

3D scanner & PC specifications

PC	Installation requirements	
	Minimum	Recommended
CPU	Intel i5	Above Intel i7
RAM	16GB	Above 32GB
Graphic Card	Geforce GTX 660	Above Geforce GTX 1060
O/S	Windows 7, 8, 10 / 64 bit	

3D scanner	Solutionix D500	Solutionix D700
Camera resolution	2 x 2.0 MP	2 x 6.4 MP
Point spacing	0.056 mm	0.029 mm
3D scanning area (FOV)	120 mm	100 mm
3D scanning principle	Phase shifting optical triangulation	Phase shifting optical triangulation
Dimension	290 x 290 x 340 mm	290 x 290 x 340 mm
Weight	12 kg	12 kg
Light source	Blue LED	Blue LED
Interface	USB 3.0 B type	USB 3.0 B type
Power	AC 100 ~ 240V, 47 ~ 63 Hz	AC 100 ~ 240V, 47 ~ 63 Hz