

# 8 Questions to Ask When Diagnosed With Pancreatic Cancer

Understanding your diagnosis



## Your Guide to Managing a Pancreatic Cancer Diagnosis

- 1 What is Pancreatic Cancer?
- 2 What Are the Stages and Types of Pancreatic Cancer?
- 3 What Are the Symptoms?
- 4 What Are the Standard Treatments?
- 5 What Are the Research Treatments?
- 6 Who Should Be on My Care Team?
- 7 What Resources Are Available?
- 8 How Do I Take a Step Forward?
- ✓ Massive Bio: Who We Are and What We Do

# Overview



# What is Pancreatic Cancer?

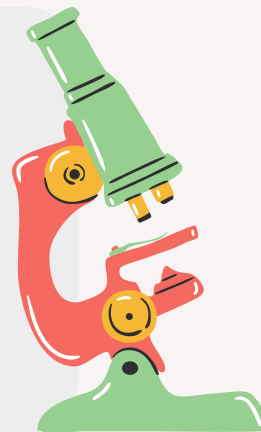
- The pancreas is a small gland located in the abdomen that helps control blood sugar and aids in digestion.
- Pancreatic cancer begins when cells within the pancreas begin to grow out of control.
- Pancreatic cancer is an aggressive disease that over 57,000 people will be diagnosed with in 2020 alone.
- 10% of pancreatic cancer cases are diagnosed in early stages while more than half have already metastasized.



The 5-year survival rate for pancreatic cancer patients is 9%, one of the lowest rates of all cancer types.



Testing for genetic mutations can help doctors learn more about the overall prognosis and predict treatment response.



# What are the Stages and Types of Pancreatic Cancer?

## Types of pancreatic cancer

- 93% of pancreatic cancers are exocrine tumors, the most common being adenocarcinoma.
- Around 7% of pancreatic tumors are neuroendocrine tumors, known as islet cell tumors, which often grow slower than exocrine tumors.

## Stages of pancreatic cancer

- Range from I-IV and progress from the least to most advanced.
- Higher stages have larger tumors and/or cancer that has spread outside of the pancreas, which leads to a less favorable prognosis.

# What Are the Symptoms of Pancreatic Cancer?

Pancreatic cancer often has no symptoms, especially in early stages. Early detection can improve the patient's overall prognosis.

If they appear, symptoms of pancreatic cancer include:

- Unintentional weight loss
- Abdominal and/or back pain
- Late development of type 2 diabetes
- Jaundice (yellowing of eyes and skin)



# What Are the Standard Treatments for Pancreatic Cancer?

Treatment for pancreatic cancer varies based on the stage of the disease and other factors. They are:

- Whipple procedure: Surgical removal for pancreatic cancers located at the head of the pancreas.
- Distal pancreatectomy: Surgical removal of the tail and/or portion of the body of the pancreas, which is much less common.
- Chemotherapy: Such as Gemcitabine and Abraxane or FOLFIRINOX.
- Radiation Therapy: Such as external beam radiation therapy (EBRT).
- Targeted Therapy: Such as EGFR or PARP inhibitors.
- Immunotherapy: Such as checkpoint or PD-1 inhibitors.



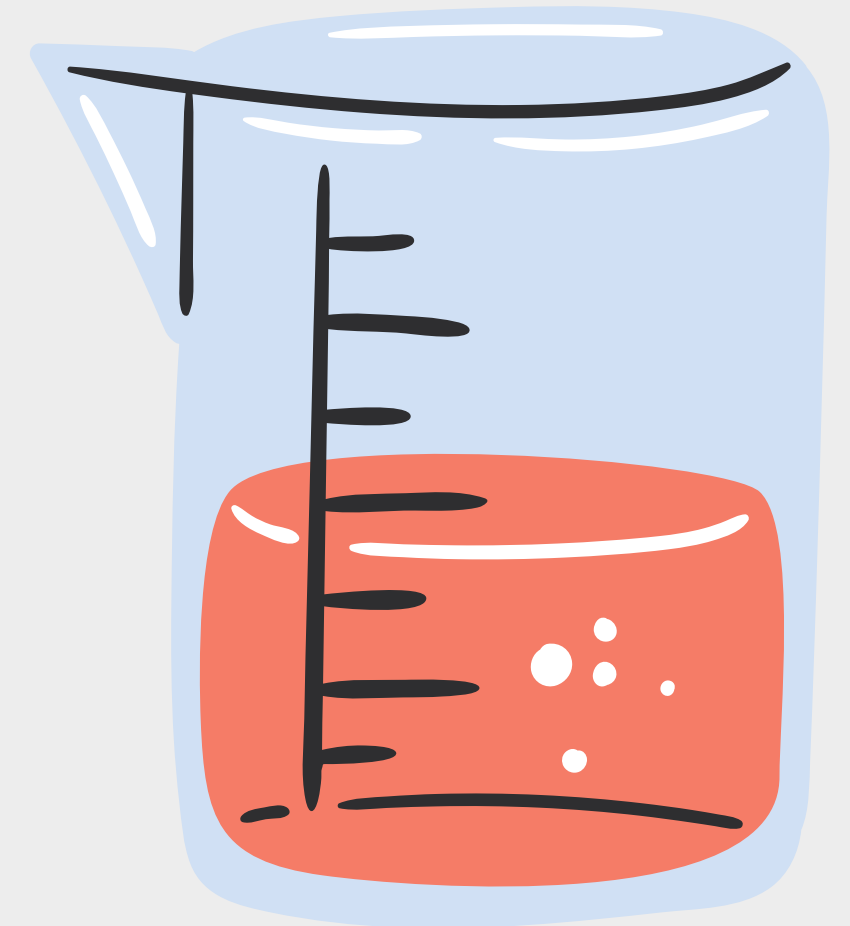
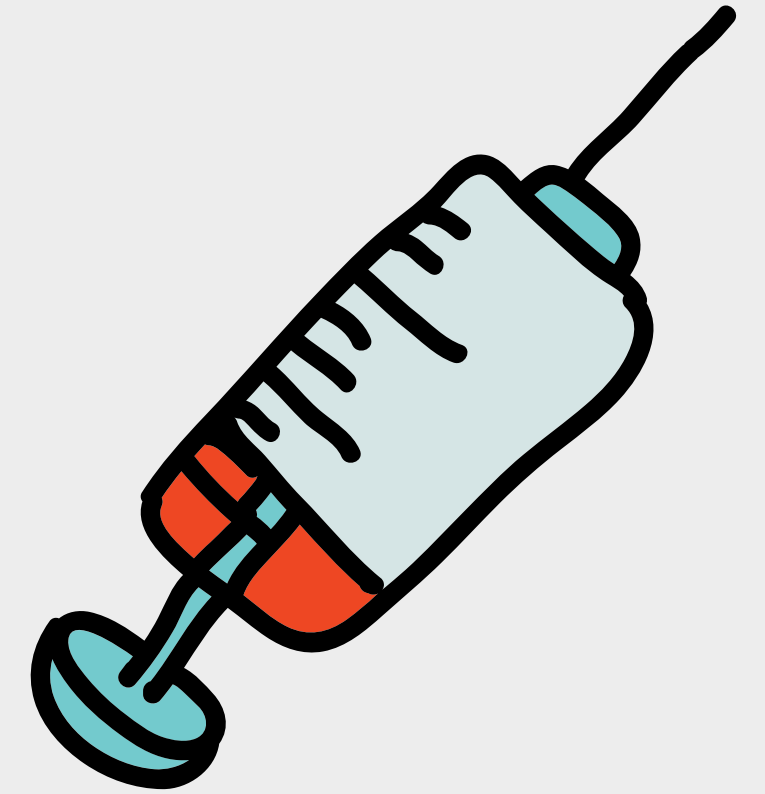
QUESTION 5: WHAT ARE THE RESEARCH  
TREATMENTS FOR PANCREATIC CANCER?

# What Are the Research Treatments for Pancreatic Cancer?

There are currently over 500 active pancreatic cancer clinical trials taking place in the United States! By participating in a clinical trial, patients receive innovative therapies years before the average population.

The new treatments investigated in today's pancreatic cancer clinical trials are:

- Targeted therapies for new biomarkers
- Immunotherapy using new monoclonal antibodies
- Combinations of chemotherapies with other drugs
- New methods of surgery



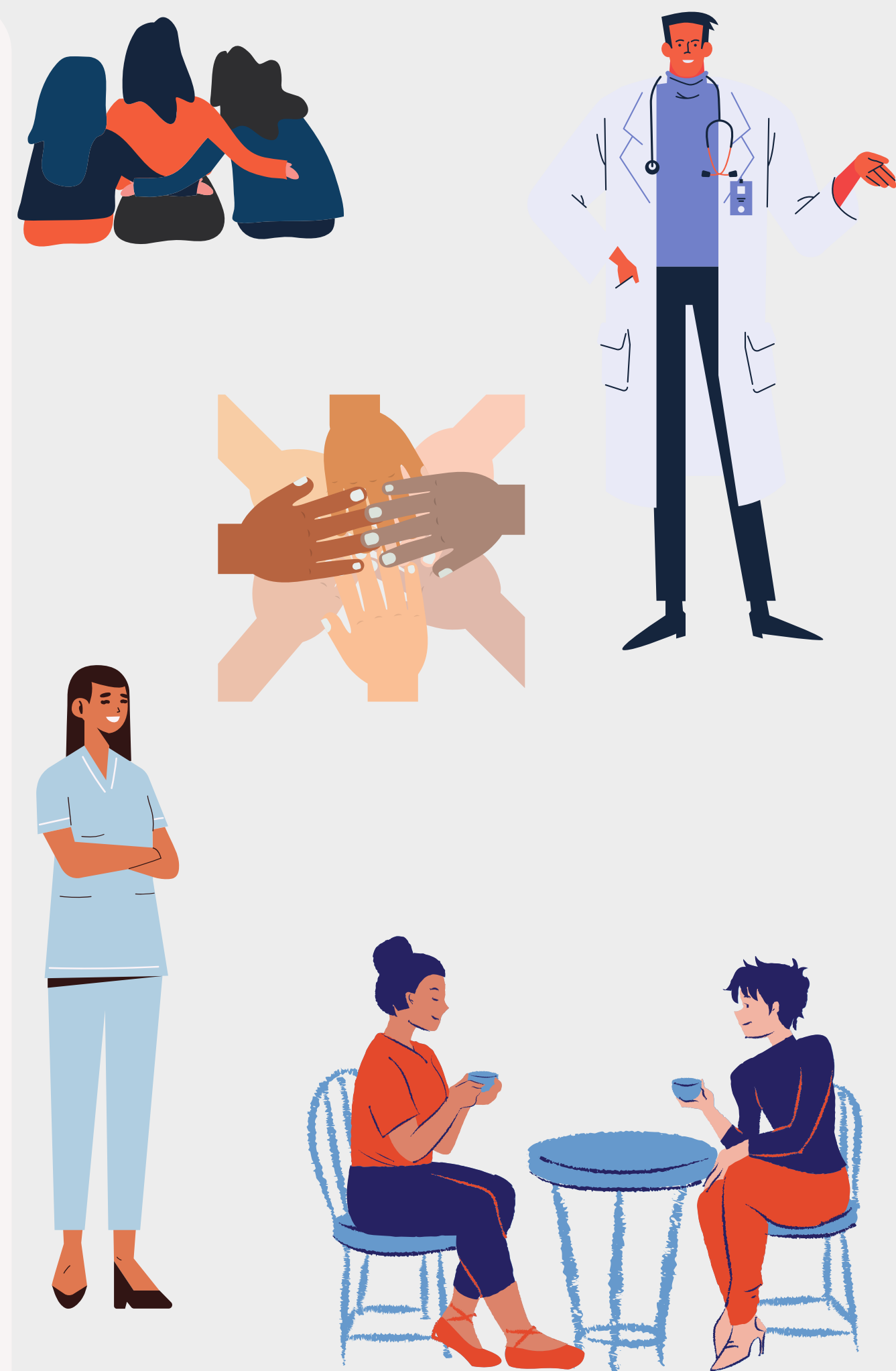


# Who Should Be on My Care Team?

Pancreatic Cancer is a serious disease, and it takes a serious team to fight.

Members of your care team can include:

- Gastroenterologists: Doctors that specialize in the gastrointestinal (GI) tract, where the pancreas is located.
- Medical Oncologists: Doctors that specialize in and treat cancer.
- Registered Dietician: Help you maintain your nutrition during your cancer journey.
- Family and Friends: Can help with everyday tasks such as cooking, babysitting during treatment, or just to talk.





# What Resources Are Available?



A pancreatic cancer diagnosis can disrupt your life in many ways. Luckily, resources are available to help!

- Social workers: Available to assist you in discharge planning, financial aid applications, advanced directive creation, and more.
- Counselors: Help you come to terms with your diagnosis and create actionable plans to maintain your mental health.
- Support groups: Available to help you connect with peers going through a similar journey so you can both support others and be supported.



## QUESTION 8: HOW DO I TAKE A STEP FORWARD?

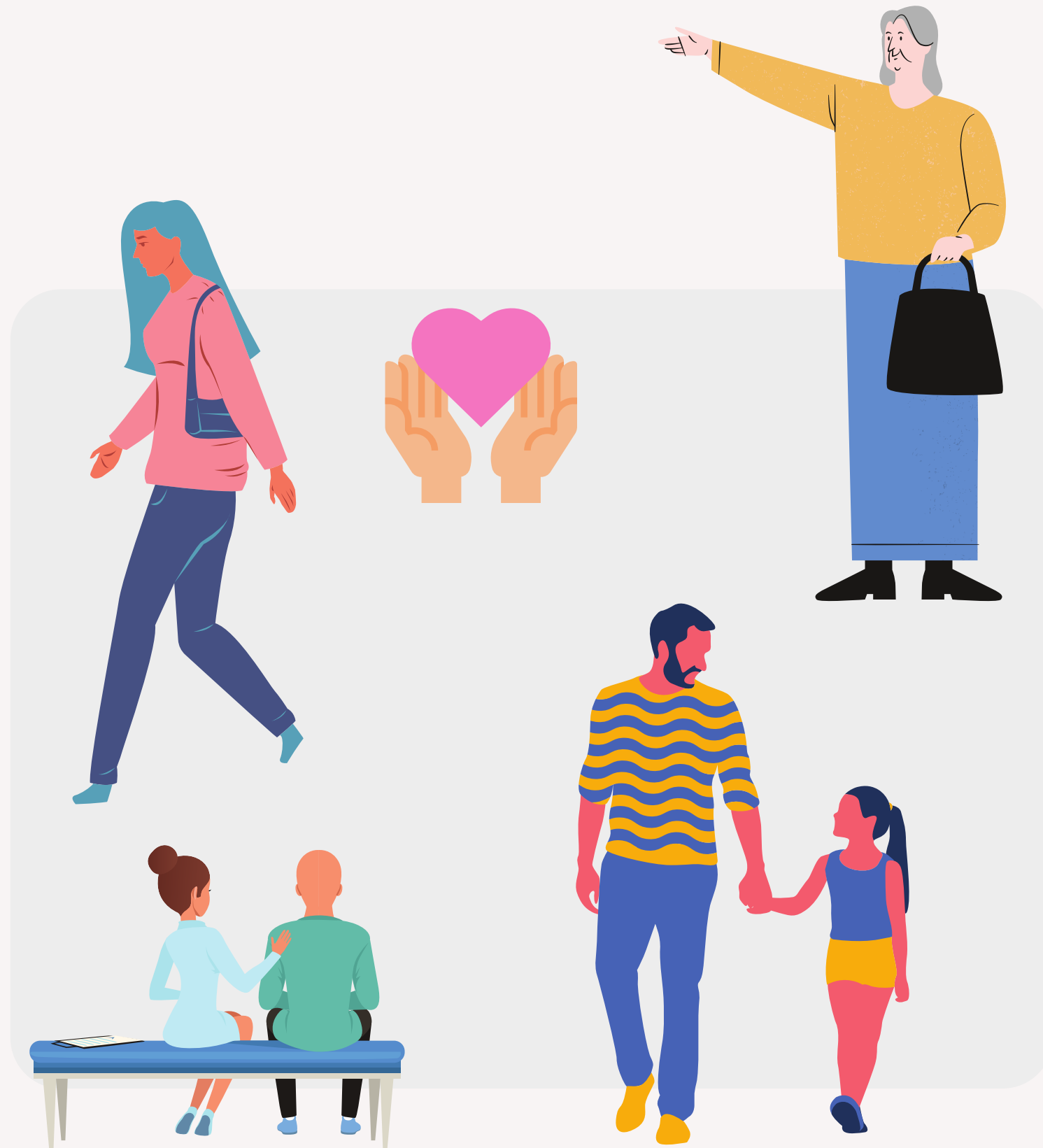
---

# How Do I Take A Step Forward?

Towards a positive outcome.

Be your own advocate and look for proactive options, such as clinical trials. Decide on a treatment plan and stay positive during your cancer journey.

Know that there are resources and people around you who are willing to help you reach a positive outcome.



MASSIVE BIO: WHO WE ARE

# Who We Are

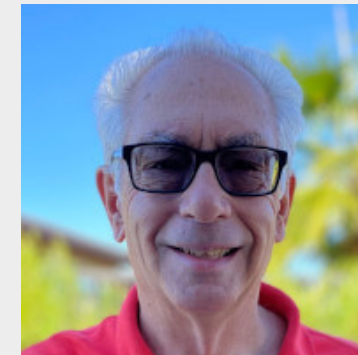
At Massive Bio, our mission is to enable cancer patients to have equal access to cutting edge therapies and new-emerging clinical trials, regardless of their location and/or financial stability.

We know each cancer diagnosis is unique and we deeply understand that each cancer type and stage require a distinct level of support and direction. Massive Bio works in collaboration with patients oncologists and cancer care teams, following the path of the patient to provide a compassionate, welcoming plan for them.



## Our Patient Advocates

Help You Access Myelofibrosis Clinical Trials



**Dr. Martin Marks, Patient Advocate**



**Fiona Evans, Lead Patient Advocate**



**Alaina Mannon, Patient Advocate**

# What We Do

Our Artificial Intelligence (AI) powered Clinical Trial Matching System connects patients and their treating oncologists to clinical trials according to their unique cancer case.

We enlist dedicated patient advocacy and oncology medical staff to collect medical records and treatment history, and match patients to eligible trials near their home to limit travel. We provide full support throughout your enrollment process to ensure logistics are handled so you can concentrate on your health.

**JOIN NOW**



**SYNERGY-AI: Artificial Intelligence  
Based Precision Oncology  
Clinical Trial Matching and Registry**

Sponsor: Massive Bio

ClinicalTrials.gov Identifier: NCT03452774

## As Featured In

**Bloomberg**



**yahoo!news**

BECKER'S  
**HEALTH IT**



**TrialSite**News

JCO® Global Oncology  
An American Society of Clinical Oncology journal

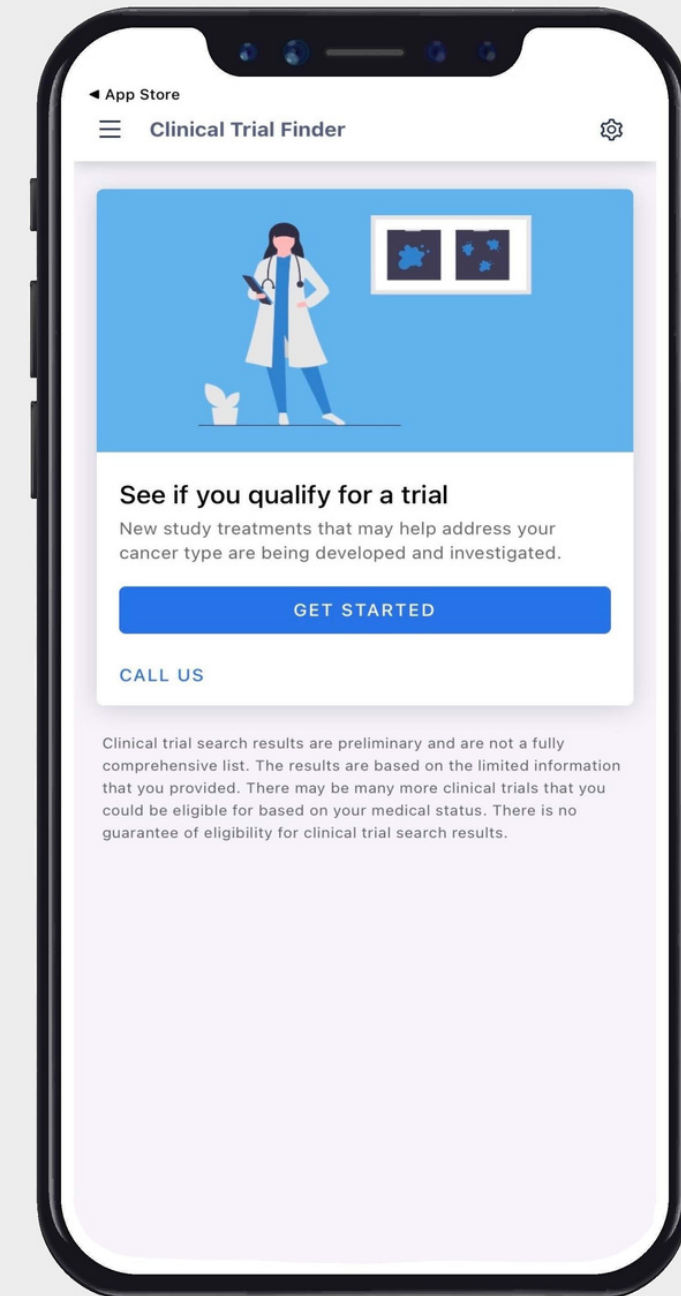




# Download the SYNERGY-AI Cancer Trial Finder Mobile App

To find clinical trials that you may be eligible to enroll in. Get real-time notifications for your trial match results.

Take a picture of the QR code to download the app on the Google Play Store or IOS App Store.



# Contact Information



How to get in touch

Phone Number

+1 (844)-627-7246

Email Address

[support@massivebio.com](mailto:support@massivebio.com)

Website

[www.massivebio.com](http://www.massivebio.com)

