



MASSIVEBIO



A Guide To Prostate Cancer Clinical Trials

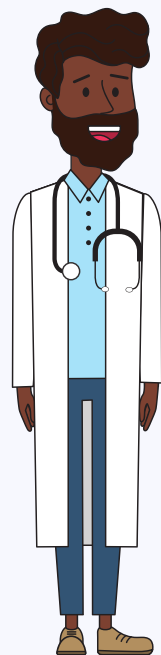
Massive Bio, Inc.

Understanding Prostate Cancer

Prostate cancer occurs when abnormal cells develop within the prostate and is the most common cancer for men in the United States. Most cases progress slowly, with early detection the chances for successful treatment increase. The prostate-specific antigen (PSA) blood test measures the level of protein in the blood made by the prostate and is used to detect any abnormalities within the prostate.

Types of Prostate Cancer include:

- Acinar adenocarcinoma
- Ductal adenocarcinoma
- Transitional cell (or urothelial) cancer
- Squamous cell cancer
- Small cell prostate cancer



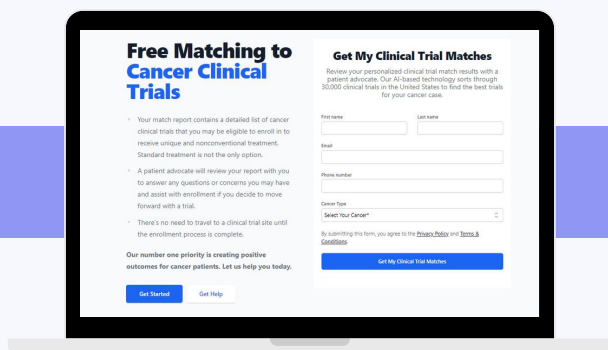
Digital rectal examinations (DRE) help doctors detect any abnormalities in the rectum caused by the prostate.

How Clinical Trials Can Help

Around 300 prostate cancer clinical trials are currently active in the United States. These trials are investigating new treatments and detection methods that could save lives in the future such as:

- Cryosurgery
- High-intensity-focused ultrasound therapy
- Proton beam radiation therapy
- Photodynamic therapy

Participating in a clinical trial not only progresses much-needed research but gives patients access to these new innovative therapies years before the general population.



**FIND TRIALS YOU'RE
ELIGIBLE FOR NOW.**

How We Can Help

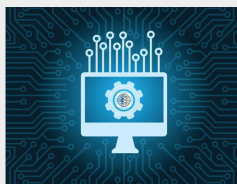
At Massive Bio, our mission is to enable cancer patients to have equal access to cutting-edge therapies and clinical trials, regardless of their location and/or financial stability.

Our Artificial Intelligence (AI) powered Clinical Trial Matching System connects patients and their treating oncologists to clinical trials according to their unique cancer case.

We enlist dedicated staff to collect medical records and treatment history and match patients to eligible trials near their home. We provide full support throughout your enrollment process to ensure logistics are handled so you can concentrate on your health.



Massive Bio Launches Industry's First NASA-Style, Oncology Clinical Trial Command Center



The National Cancer Institute Awarded Contract to Develop an Oncology Based Artificial Intelligence-Enabled Clinical Trial Recruitment Tool

Contact Information



Fiona Evans
Lead Patient Advocate
Phone: 646.586.2753
Email: fevans@massivebio.com



Jackie Bement
Patient Advocate
Phone: 646.453.7362
Email: jbement@massivebio.com

Email: Support@massivebio.com

Website: www.massivebio.com

A patient advocate will contact you in 24 hours after downloading this guide to further discuss your eligibility for clinical trials. To begin receiving your complimentary clinical trial matching results, complete the Synergy-AI agreement below.

[**SYNERGY-AI Clinical Trial Matching**](#)



OUR MOBILE APP CAN HELP YOU FIND CLINICAL TRIALS

The SYNERGY-AI Cancer Clinical Trial Finder App is available in the IOS and Google Play Stores Now.

