

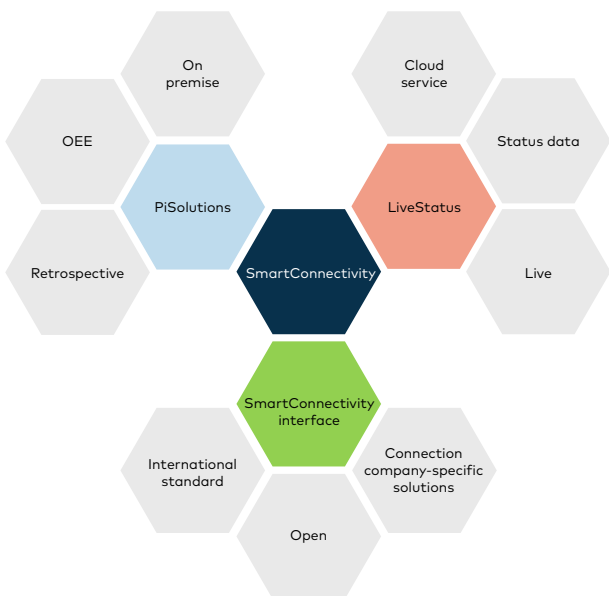
# SmartConnectivity

## The Agathon Industry 4.0 Universe



# SmartConnectivity at a glance

SmartConnectivity is the industry 4.0 universe of Agathon. It consists of three products that are proposed independently of each other, which perform different tasks and address different target groups.



## **LiveStatus**

Cloud-based IIoT solution with the focus is on displaying production and status data on mobile devices and the desktop PC in real time.

## **Extended SmartConnectivity interface (as of autumn 2018)**

Open interface with the focus is on connecting the machine park to central systems that are already in use in the company.

## **PiSolutions**

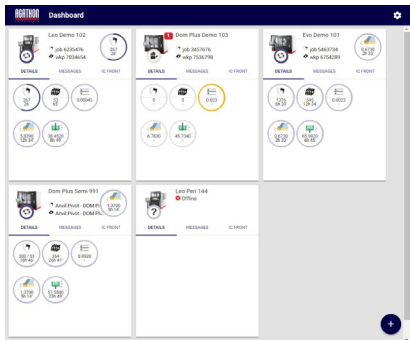
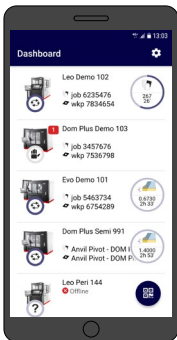
On premise MES solution with the focus is on production planning to determine and improve Overall Equipment Effectiveness (OEE).

# LiveStatus

LiveStatus is a cloud-based IIoT solution from Agathon. Data on the status of currently running grinding jobs and of the tooling used are transferred to the App on your mobile device. The data can also be displayed on a desktop PC.

## Your benefits

- You know the status of running grinding jobs and are informed in real time about events, especially during unmanned shift(s)
- You know when grinding jobs have been completed and can better plan follow-up jobs. This makes it even easier to meet deadlines
- You do not need to be on the machine to be able to supervise a grinding job. Instead, you can concentrate on other tasks or enjoy your free time
- The easy to understand display allows for more efficient transition between shifts



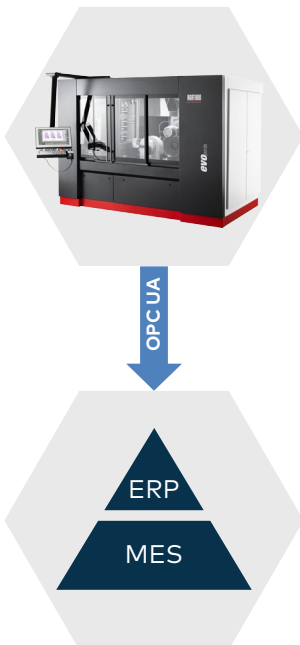
# SmartConnectivity interface

(as of autumn 2018)

The latest generation of open OPC-UA interface. The extended version of our interface connects your Agathon machines with your company-specific production planning system and other central systems.

## Your benefits

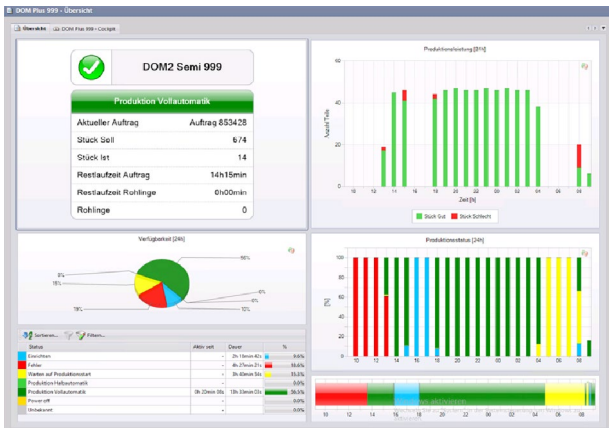
- You get a comprehensive overview of your machines' status
- You obtain reliable data for determining productivity and for statistical evaluation of production over the time
- You receive well-founded information for your production planning and for the further improvement of the Overall Equipment Effectiveness (OEE)
- The SmartConnectivity interface is based on an open, secure and internationally established standard (OPC UA)



On premise MES solution for efficient production control. PiSolutions has a modular structure. It is open for machines from other suppliers and for production processes other than grinding.

## Your benefits

- PiSolutions is scalable and therefore perfectly suited for companies with a manageable and extensive machine park
- You receive machine and job statistics for even better machine utilization
- You receive evaluable information for professional reporting
- You can optimize the OEE of the individual machines, the entire grinding machine park and the complete machine park of your company
- You benefit from a factual insight for new and replacement equipment
- PiSolutions is compatible with all common ERP systems and can therefore be easily integrated into your existing IT infrastructure





[sales@agathon.ch](mailto:sales@agathon.ch) | [www.agathon.ch](http://www.agathon.ch)