

OnsitePower[™]

State-of-the-art remote generator monitoring and control

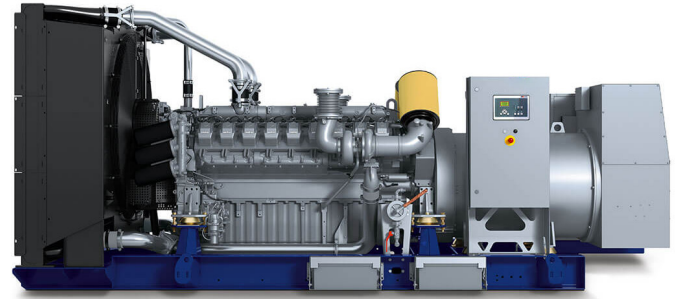
No matter which make, model, or age of generator or control panel, make sure the generator starts when needed!

Why Blue Pillar OnsitePower?

At Blue Pillar, we connect industrial equipment to the internet and serve up the data to manage, monitor, and control equipment and devices.

Blue Pillar's OnsitePower solution makes it fast and simple to deploy and maintain remote connectivity to onsite power equipment; providing 24x7 web-based access to monitor and control the generator whether you're in the building or half a world away.

Whether a single generator, an entire emergency power system, or a portfolio of onsite power equipment, OnsitePower provides instant access to the state, health, and readiness of your equipment.

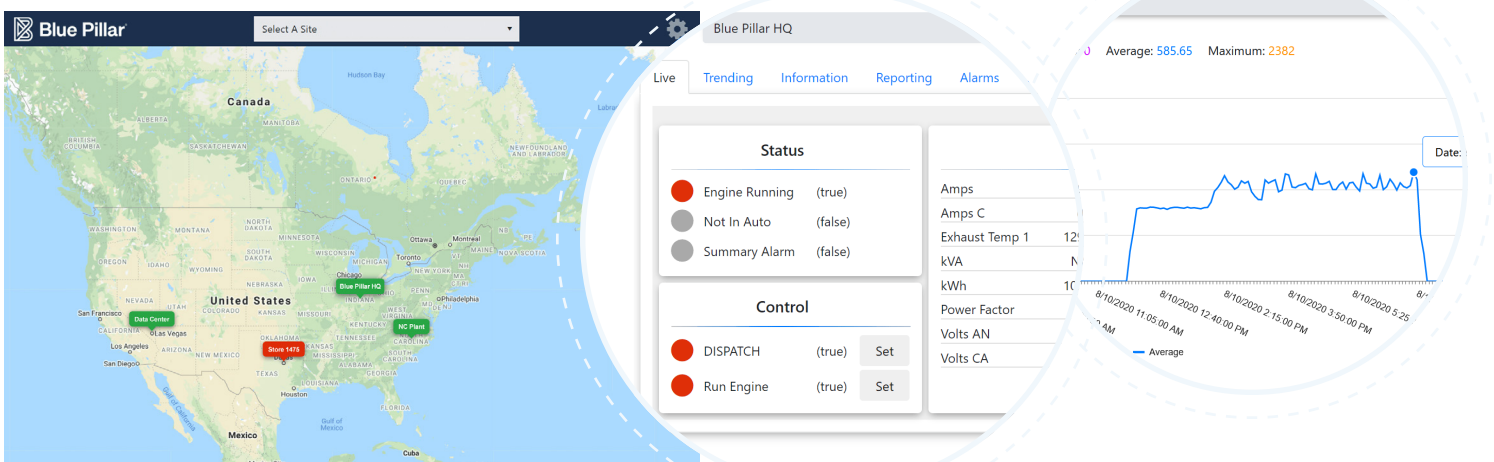


Benefits include:

- Reduce fail to start events
- Ability to be proactive about generator maintenance
- Be alerted to potential problems before they become expensive repairs or damaging power outages
- Improved response to service calls
- Eliminate manual reporting process for required compliance reporting
- Affordable, cost-effective solution that is easy to install & configure
- Built on state-of-the-art technology
- Global cellular connectivity available from major cell providers

Features

- Works with all generators regardless of make, model, or age
- User-friendly cloud-based software supported on any internet connected browser enabled device (desktop, tablet, smart phone)
- Configurable equipment level alarms for notification via email and text
- Remotely start/stop the generator for no load testing (optional)
- Remotely activate the ATS test mode for load testing (optional)
- Historical trending and analysis of critical equipment data
- Out of the box generator run reports in PDF format
- Custom reports (e.g. emissions and energy) can be added
- Journal feature allows users to log maintenance reports or notes, upload equipment manuals and any other equipment documentation
- Schedule weekly generator tests in the OnsitePower software and allow OnsitePower to start, stop, and create a report for the test automatically
- Can support cloud integration to other software systems through the Blue Pillar IoT Access API



OnsitePower Hardware Kit

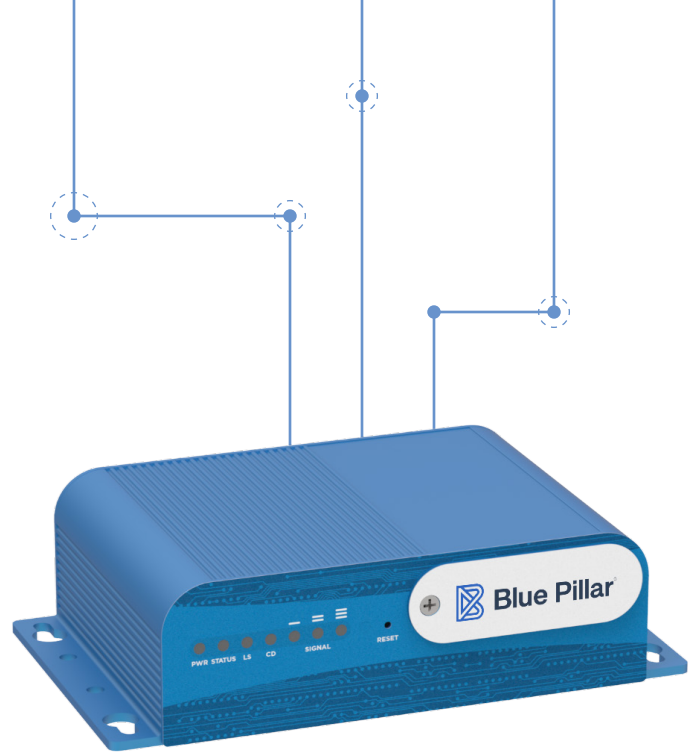
Blue Pillar leverages off-the-shelf hardware from leading suppliers of industrial gateways to ensure the highest quality for the lowest cost.

The Blue Pillar OnsitePower hardware kit includes:

- One gateway with magnetic mounts
- Two magnetic mount cellular antennas
- Two power cable options:
 - One 120 Volt AC wall power supply
 - One fused power cable for powering gateway from generator batteries
- One Modbus communication cable
- One basic bare wire I/O wire harness

The OnsitePower Gateway supports:

- Connection to one generator, one belly tank level sensor (optional), one power meter (optional), and up to three ATS switch position connections
- Serial (RS-232, 422, or 485) Modbus RTU and Ethernet Modbus TCP communication
- Cellular communication to the OnsitePower cloud platform. The cellular service is included in the annual monitoring subscription
- Customer provided hard-wired ethernet internet connection in situations where cellular service is not available



Optional Hardware

- EZ Connect™ Wire Harness with built-in 24 or 12 VDC relays to accelerate and simplify the installation process
- Ultrasonic fuel tank level sensor (max. 49.2" (1.25m) tank depth, 1" NPT (G) mount)
- Low Fuel Switch
- Electric Power Meter Kit

Installation and retrofit kits

Quick and easy to install, whether to an existing Modbus enabled generator controllers or hardwiring to an older generator includes the Blue Pillar Gateway with magnetic mounts. The optional EZ Connect wire harness is available to simplify the installation process. For generators with an existing controller, installation can be as quick 30 minutes.

Installation is supported by Blue Pillar's Industrial IoT Platform Deployment Tools; a mobile solution for installation and services partners that automates and simplifies the deployment and commissioning of solution.



Works with any manufacturer

OnsitePower's extensive equipment and device library includes connectivity to:

KOHLER
GENERATORS

W WOODWARD

DSE **Genset**[®]

CAT[®]

ComAp 

mtu 

Cummins


GENERAC[®]

B Basler Electric[®]

 **DETROIT**[®]

 **Blue
Pillar**[®]

 **DVL** BEYOND
THE
PRODUCT

We speak Industrial IoT connectivity so you don't have to.

www.DVLnet.com

BluePillar.com