



Setting up your integrations

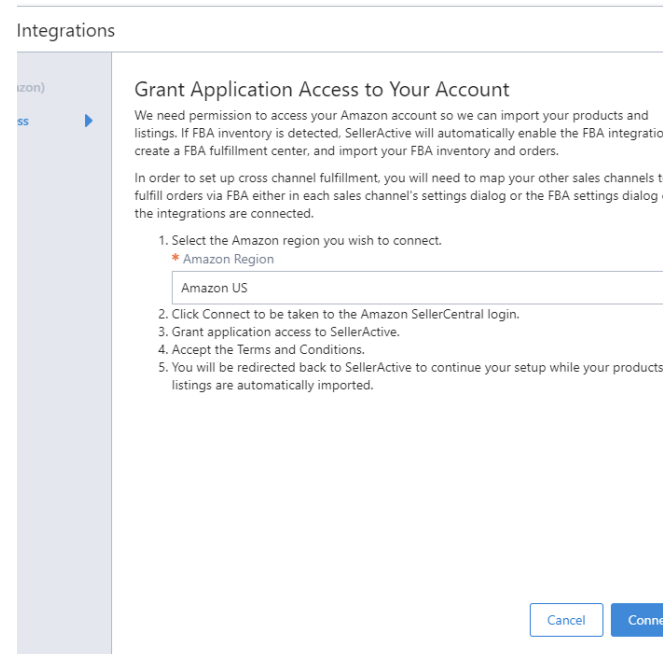
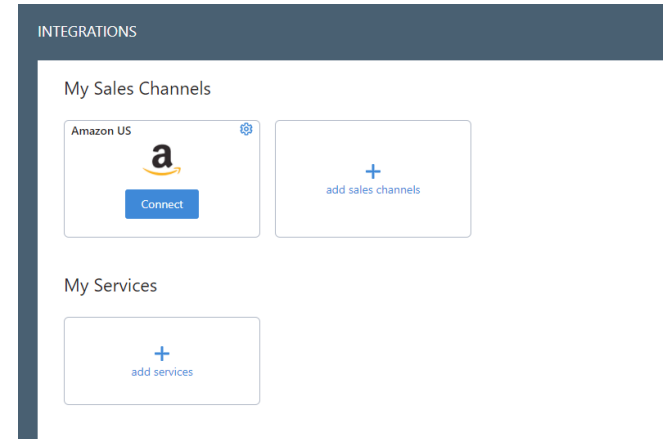
Step 1

Integrate Your Marketplaces

- ▶ All integrations live under Settings > Integrations
- ▶ Always integrate Amazon first since this will trigger the augmentation process (which is vital for listing).

Integrate Amazon

- ▶ Amazon -Select connect on the Amazon Tile. Follow all proceeding steps.





Inbound Settings

Import Listings - Allows inventory to be imported into SellerActive.

Import Orders - Allows orders to be imported into SellerActive.



OutBound Settings

Export and Manage Quantities - Allows SellerActive to push qty to marketplaces

Export and Manage Prices - Allows SellerActive to push price to the marketplace.

Managing Price and Quantities.

- ▶ Export and manage quantities and prices are powerful settings. We recommend, prior to turning these on, that you do a few things to help avoid any potential issues.
 - ▶ Set up all pricing strategy related fields
 - ▶ Prepare the items you plan on listing to marketplaces.
 - ▶ Verify all quantities and prices are correct in SellerActive
 - ▶ Once the above is completed you can turn on.
- ▶ Both Export and manage Prices and quantities must be turned on in order to publish any item to a marketplace through SellerActive.

Ebay Business Policies

- ▶ Ebay Business policies need to be filled out for listing new items to ebay.
- ▶ These live under the Listings Details tab of the ebay integration screen.
- ▶ Shipping Location and Default policies must be filled out if you intend to list to the ebay marketplace.
- ▶ If Default Policies are absent you will need to opt in to ebay's business policies following the instructions provided.

Integrate Your Services

- ▶ Amazon FBA
- ▶ Deliverr
- ▶ SkuVault
- ▶ Shipping
 - ▶ Shipstation
 - ▶ Shipworks
 - ▶ Desktopshipper

My Services

The screenshot displays a 'My Services' section with five service cards. Each card includes a service name, a logo, a status indicator, and a settings gear icon. The status indicators are: 'AUTHORIZED' for Amazon FBA, and 'DISCONNECTED' (with a red warning triangle) for ShipStation, Shipworks, and Deliverr. The fifth card is a placeholder with a plus sign and the text 'add services'.

Service	Status
Amazon FBA	AUTHORIZED
ShipStation	DISCONNECTED
Shipworks	DISCONNECTED
Deliverr	DISCONNECTED
+ add services	

Resources

- ▶ Setting up Cross Channel Fulfillment
 - ▶ [Cross-Channel Fulfillment for Amazon FBA Sellers](#)
 - ▶ [How do I make sure that my FBA quantity reaches the non-Amazon sales channel?](#)
- ▶ Walmart integration walkthrough
 - ▶ <https://www.selleractive.com/en/support/integrate-walmart-with-selleractive>
- ▶ Ebay Business Policies
 - ▶ <https://www.selleractive.com/support/ebays-new-business-policies>
- ▶ Support email - support@selleractive.com
- ▶ Support articles - www.selleractive.com/support