



**blacklinesafety**

Oil and Gas

# No matter what challenges the Oil and Gas Industry face, **Blackline** gets workers home safe and sound.

If there's one thing we understand, it's the importance of making sure every worker goes home safe, every day. That means protecting your team from things like explosions and fires, falls, confined spaces, high pressure lines and equipment, and other potentially dangerous hazards. Blackline Safety protects workers in refineries, oil fields, petroleum storage areas, processing facilities and other locations across the industry where safety is a priority.

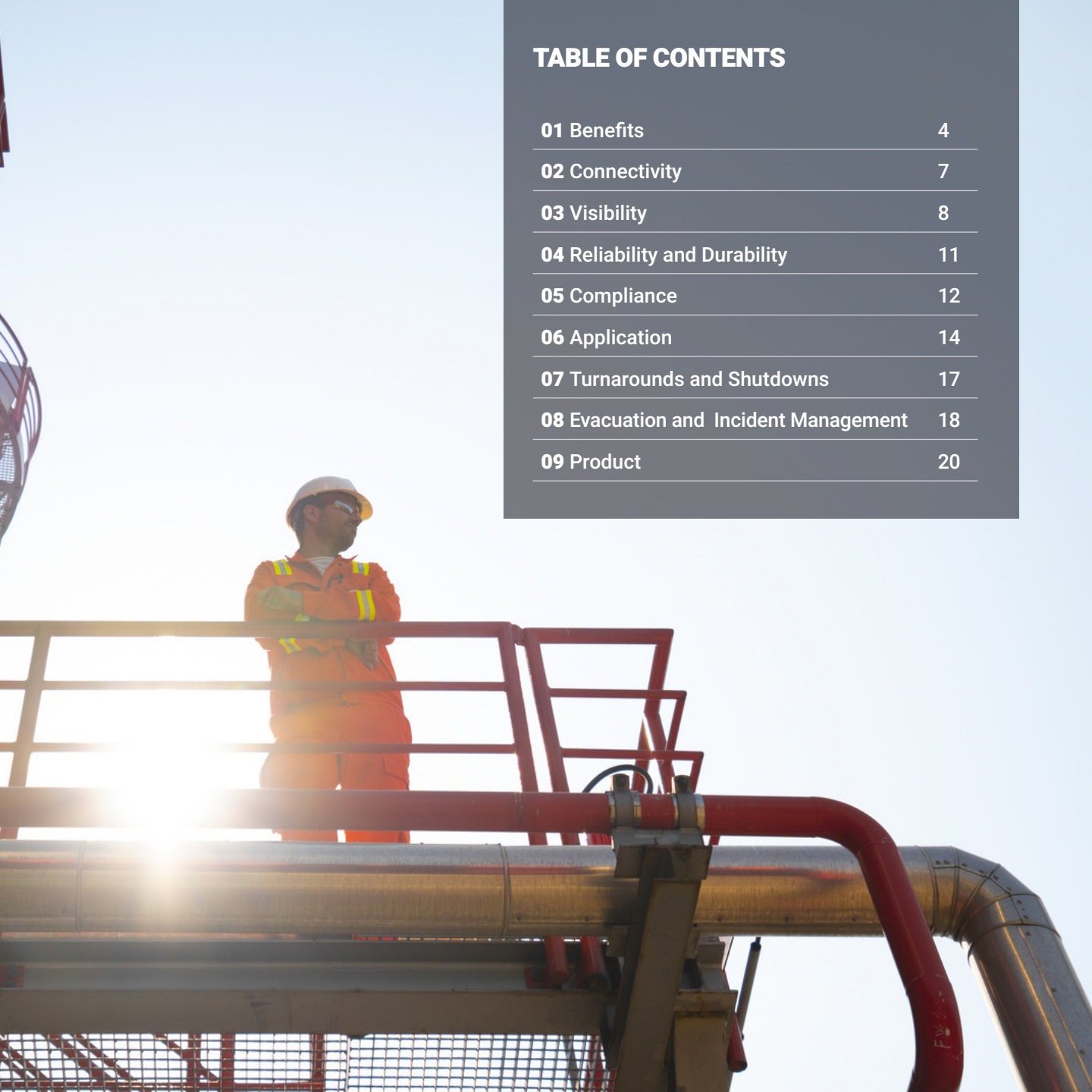
Whether it's personal or area gas monitoring, efficient confined space entry, protecting employees working alone or the need to improve your safety overall, no one has you covered better than Blackline. With a suite of the most technologically advanced and capable products on the market with included data analytics and reporting, you now have access to a connected safety ecosystem that gives you visibility into your worksite like never before.

---

**blacklinesafety**







# TABLE OF CONTENTS

01 Benefits	4
02 Connectivity	7
03 Visibility	8
04 Reliability and Durability	11
05 Compliance	12
06 Application	14
07 Turnarounds and Shutdowns	17
08 Evacuation and Incident Management	18
09 Product	20

A photograph of a modern building with large windows and a garden. In the foreground, there is a pair of work boots on the grass. The text is overlaid on the left side of the image.

Benefits

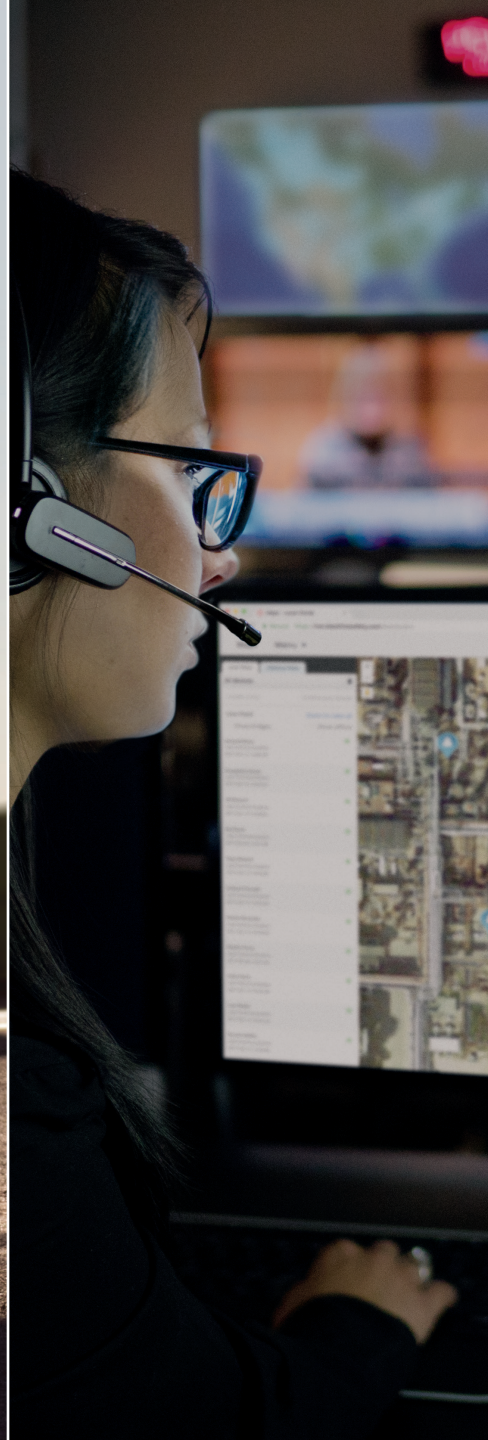
# How we do it, and more importantly **why we do it.**

At Blackline Safety, our constant drive is to develop innovative solutions to protect workers, because when lives are on the line, there simply is no room for second best.











02  
Connectivity

# Protected Because They're Connected.

Whether it's a worker entering a confined space, an entire facility needing to be monitored for potential gas hazards or an emergency response or evacuation that needs to be initiated, nothing is more important than reliable connectivity. G7 wearables' instant connectivity allows you to locate any team member, in any location, at any time. With GPS, cellular or satellite connectivity and two-way communications, G7 is a true lifeline for workers. Those archaic "beep and flash" detectors simply no longer cut it.

You and your team are ready to go as soon as G7 is turned on and automatically connects to the cloud, without the need for WiFi or networks to be set up. And the G7 EXO

area monitor delivers the same unmatched connectivity and ultimate visibility into your entire facility. Advanced analytical capabilities ensure you're constantly in the know with real-time compliance, comprehensive safety monitoring and unquestionable control of evacuation management.

For businesses without a control room or always-available supervisors, Blackline's in-house Safety Operations Center is staffed 24/7 with professionally trained monitoring agents focused exclusively on ensuring the well-being of employees' safety. Connect your team to real people, ensuring industry-leading live monitoring accompanies your workers wherever they operate.

03  
Visibility

# **Visualize the Data to Keep Your Team Safe.**

Blackline Live, our safety and productivity software platform, allows you to protect your workforce and have in-depth visibility into their well-being and surroundings in real-time. Having uncompromised awareness into every situation, from normal routines to when an incident occurs, allows you make the best decisions and take appropriate action. And a large part of dealing with incidents, is preventing them from happening in the first place.

With data analytics, Blackline has you covered there, too. When a worker is checking a well site, transporting finished product or performing regular maintenance and repairs, you'll have historical data to help you anticipate and identify potentially dangerous situations so that changes in safety measures can be taken to further protect workers in the future.



# Alert Management

**Brendon Cook**

Company: Blackline Safety  
Device ID: 3566000179  
Mobile: 403-451-0327  
Work: 4034510327  
Home: 4034510327



**SOS Alert**

2017-07-17 11:14:03 MDT

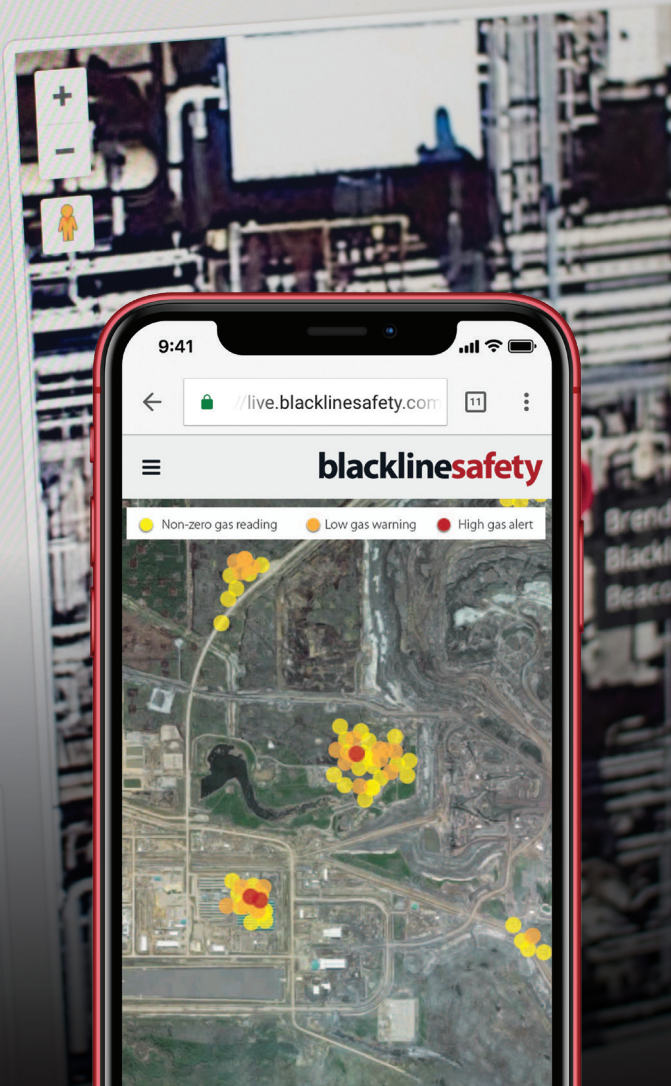
-- Choose a reason for resolving --

**Resolve Alert**

## Alerts in the last 24 hours

Select the alert below to view its history

- Unresolved | 2017-07-17 11:08:55 MDT | Fall Detected Alert









04 Reliability and Durability

# Durable. Reliable. Versatile. Unmatchable.

Whether it's the harsh environment of a refinery, a confined space entry or an extended job in the extreme cold, the last thing you need to worry about is your equipment. With Blackline, you get the most rugged, reliable and durable safety products on the market that perform brilliantly in extreme conditions. It's about saving money, time and additional headaches you don't need. But most importantly, it's about saving your team from having to worry about their safety rather than the task at hand.

With 100-day battery life and rugged design, the G7 EXO can outlast any project and stand up to any environment. Going to be on a drill site for three weeks or longer? Need to have extended access to a confined space and don't want to re-permit multiple times? G7 EXO won't need a battery replacement— it's an area monitor with built-in cost and time savings. If the situation calls for extra power,

add it via the intrinsically safe charging port or optional solar panel to continuously monitor the safety of your worksite indefinitely.

While G7 wearables lead the way for connected single-gas to five-gas detectors with or without pump, they are so much more than that - taking worker safety to the next level. With extensive man down safety features including fall detection, missed check-in alarms, an S.O.S. latch to call for immediate assistance and no-motion detection, G7 has your worker's back in potentially risky workplace situations beyond just gas detection. Add in two-way communications and push-to-talk functionality (similar to a walkie talkie but with unlimited range), your workers and their safety are always taken care of. Add in pre-calibrated sensor cartridges and other options to G7's versatility and you've got a customizable solution that enhances safety and productivity.

# 05 Safety Beyond Compliance.

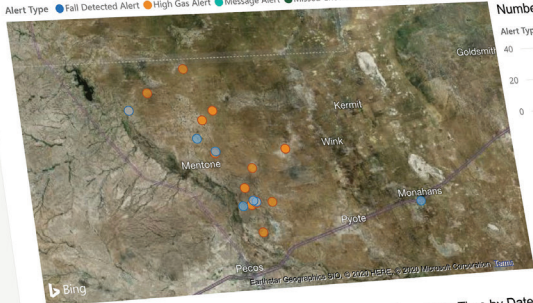
With Blackline's connected safety solutions, you can stay ahead of the curve when ensuring the safety and efficiency of your entire worksite. Blackline's data allows you to review gas exposure reports, analyze heat maps of hazardous incident locations and see compliance trends over time. Unsure of the current bump and calibration status of every device in the field for your entire operation? Blackline Live gives you real-time visibility into the current status of every connected device so you can take steps to ensure the safety of every worker.

With connected wearables that deliver data analytics for real-time compliance, you'll have full confidence that you're not only compliant, you're proactively working to improve the safety of your team.

## Alerts Report

## Alerts location

Alert Type ● Fall Detected Alert ● High Gas Alert ● Message Alert ● Missed Check-in Alert ● No Motion Alert

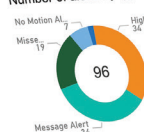


## Number of alerts

Alert Type ● Fall Detected Alert ● High Gas Alert ● Message Alert ● Missed Check-in Alert ● No Motion Alert



## Number of alerts by type



## Number of resolutions by reason



## Individual alert processing time

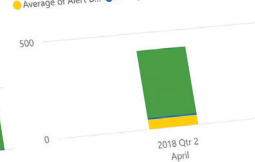
● Alert Deliv... ● Alert Ackn... ● Alert Resol...

+ 2K

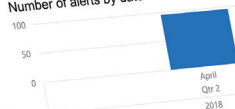


## Average Alerts Processing Time by Date

● Average of Alert D... ● Average of Alert... ● Average of Alert...



## Number of alerts by date



Reset page

Date

4/1/2018 4/13/2018

Organization

All

Group

All

Assigned User

All

Device ID

All

Alert Type

Multiple selections

Resolution Reason

All



Application

# The Comprehensive Ecosystem That's There When You Need It.













# 07 Turnarounds and Shutdowns.

At one time or another, oil and gas facilities around the world need to take assets and processes offline and suspend production for scheduled maintenance, repairs, cleaning or unexpected equipment failures. Whether it's a planned turnaround, shutdown or an unforeseen outage, there are many challenges these short-term operations face. This includes having visibility into workplace productivity and safety for regular employees but also contract workers that are less familiar with the facility and standard safety procedures. Blackline Vision can help minimize lost revenue and avoid safety incidents.

## **blackline**vision

---

Blackline Vision takes the data already being collected from your G7 connected devices and utilizes data science processes and algorithms to dig deep into that data to uncover opportunities to increase operational efficiency and productivity during a turnaround or shutdown. This can save hours or days of work required during a turnaround which, in turn, gets assets back online faster — adding potentially millions in revenue that otherwise would have been lost.

The flexibility to buy, lease or rent G7s gives added options for Operations Managers, Safety Managers and contractors to acquire products, as needed, depending on both the short- or long-term requirements. For turnarounds in particular, the ability to rent for only the days the devices are used is a smart, cost saving measure that can positively impact your bottom line.

# 08 Evacuation and Incident Management.

During an evacuation, speed and visibility are vital to the safety of your team. With G7, you have complete awareness and mass notification ability to direct teams and individuals to the nearest muster point. Push-to-talk functionality provides constant communication between on-site workers, while Blackline Live provides real-time visibility, including gas readings, team wellbeing and other information to gauge the emergency response.

Take advantage of real-time relevant communications and post evacuation assessment tools to find faster routes to ensure everyone finds safety as fast as possible. Plus, since you'll be able to see the real-time location of each connected worker, you can eliminate timely and inaccurate headcounts while also seeing the exact location of a worker if they can't make it out and need assistance – making sure no one gets left behind. These factors combined can save hundreds of thousands of dollars each year during drills and real evacuations. You never want to experience evacuations, but when you do, you'll want Blackline by your side.

The EXO logo is a teal-colored speech bubble with the word "EXO" in white capital letters inside. It is positioned on the right side of the image, over a background of an aerial view of a city with circular patterns, possibly representing a stadium or a specific urban layout.







# G7

## Product Features At-A-Glance



Gas	Sensor type	Range	Resolution
Ammonia (NH <sub>3</sub> )	Electrochemical	0–100 ppm	0.1 ppm
High-range ammonia (NH <sub>3</sub> )	Electrochemical	0–500 ppm	1 ppm
Carbon monoxide (CO)	Electrochemical	0–500 ppm	1 ppm
High-range carbon monoxide (CO)	Electrochemical	0–2000 ppm	5 ppm
Hydrogen resistant carbon monoxide (CO-H)	Electrochemical	0–500 ppm	1 ppm
Carbon dioxide (CO <sub>2</sub> )	NDIR	0–50,000 ppm	50 ppm
Chlorine (Cl <sub>2</sub> )	Electrochemical	0–20 ppm	0.1 ppm
Chlorine dioxide (ClO <sub>2</sub> )	Electrochemical	0–2 ppm	0.01 ppm
COSH	Electrochemical	0–500 ppm CO, 0–100 ppm H <sub>2</sub> S	1 ppm CO, 0.1 ppm H <sub>2</sub> S
Hydrogen cyanide (HCN)	Electrochemical	0–30 ppm	0.1 ppm
Hydrogen sulfide (H <sub>2</sub> S)	Electrochemical	0–100 ppm	0.1 ppm
High-range hydrogen sulfide (H <sub>2</sub> S)	Electrochemical	0–500 ppm	0.5 ppm
LEL-infrared (LEL-IR)	NDIR	0–100% LEL	1% LEL
LEL-MPS™	Molecular property spectrometer™	0–100% LEL	0.1% LEL
Nitrogen dioxide (NO <sub>2</sub> )	Electrochemical	0–50 ppm	0.1 ppm
Oxygen (O <sub>2</sub> )	Pumped electrochemical	0–25% vol	0.1% vol
Ozone (O <sub>3</sub> )	Electrochemical	0–1 ppm	0.01 ppm
Photoionization (PID)	PID	0–4,000 ppm	0.1 ppm (0–100 ppm), 2 ppm (100–4,000 ppm)
Sulfur dioxide (SO <sub>2</sub> )	Electrochemical	0–100 ppm	0.1 ppm

## Standard G7 Safety Alert Features

**Fall detection and No-motion detection:** Tri-axis accelerometer, tri-axis gyro, software processing, configurable sensitivity, configurable time for no-motion  
**SOS latch:** Pull latch to trigger SOS alert  
**Silent SOS:** Press and hold latch to trigger SOS alert  
**Low-battery:** Configurable threshold  
**Worker check-in:** Configurable timer (30 – 180 min, or off), automatic check-in when driving

## Additional Gas Cartridge Features

**Under limit**  
**Over limit**  
**Time-weighted average (TWA)**  
**Short-term exposure limit (STEL)**  
**High gas alert**  
**Low gas alert**  
**Bump test and calibration notification**  
**Bump test and calibration failure**

## Size & Weight

### G7 with Standard Cartridge

**Size:** 64 mm x 124 mm x 29 mm (2.52" x 4.88" x 1.06")  
**Weight:** 162 g (5.7 oz)

### G7 with Single-gas Cartridge

**Size:** 64 mm x 128 mm x 29 mm (2.52" x 5.04" x 1.06")  
**Weight:** 167 g (5.9 oz)

### G7 with Multi-gas diffusion Cartridge

**Size:** 66 mm x 150 mm x 29 mm (2.52" x 5.91" x 1.06")  
**Weight:** 192 g (6.8 oz)

### G7 with Multi-gas pump Cartridge

**Size:** 66 mm x 151 mm x 38.5 mm (2.6" x 5.95" x 1.52")  
**Weight:** 238 g (8.4 oz)

## Blackline Live Web Application

Cloud-hosted safety monitoring web application is highly customizable for every customer requirement. Includes live map, employee address book, user roles, alert management, device configurations, alert setups and reporting.

## Wireless Updates

**Device configuration changes:** Yes  
**Device firmware upgrade over-the-air (FOTA):** Yes

## User Interface

168 by 144 pixel graphical, high contrast, liquid crystal display with front lighting, menu system driven by three-button keypad, power button (on/off), check-in button (check-in/silent SOS), SOS latch (send emergency alert)  
**Multi-language support:** Yes, EN, FR, ES, DE, IT, NL, PT

## User Notification

**Green SureSafe® light:** Blinking (powered), continuous (connected)  
**Yellow top and front lights:** Yellow pending alarm and yellow warning alarm  
**Red top and front lights:** Red alert communicated  
**Blue LiveResponse™ top and front lights:** Confirmation that a monitoring team has acknowledged the alert  
**Alarm Indicators:** Speaker, LED lights and vibration motor  
**Speaker sound pressure level:** ~95 dB @ 30 cm (~95 dB @ 11.8")  
**Voice calling:** Speakerphone and phone modes (G7c model only)

## G7c Wireless Radio

**Wireless coverage:** 100 countries, 200 wireless carriers  
North America: 2G/3G radio, GSM 850 MHz, PCS 1900 MHz, 3G UMTS bands 2, 5 and 6  
**International:** 2G/3G radio, E-GSM 900 MHz, DSC 1800 MHz, 3G UMTS bands 1 and 8  
**Antenna:** Internal regionally optimized

## G7x Wireless Radio

Works with G7 Bridge satellite base station  
**Radio:** 902.0 – 928.0 MHz, 1 Watt  
AS/NZ Radio: 915.0-928.0 MHz  
**Antenna:** Internal  
**Radio link range:** 2 km (1.25 mi)

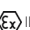
## Location Technology


**GPS Radio:** 48-channel high sensitivity  
**Assisted-GPS:** Yes (G7c model only)  
**GPS Accuracy:** ~5 m (16 ft) Outdoors  
**Indoor location technology:** Blackline Safety location beacons  
**Location update frequency:** G7c 5 min, G7x 15 min defaults

## Power & Battery

**Rechargeable Li-ion battery:** 1100 mAh Li-ion  
**Battery Life:** 18 hours at 20°C (68°F) under normal usage  
**Charge time:** 4 hours  
**Environmental**  
**Storage temperature:** -30°C to 60°C (-22°F to 140°F)  
**Operating temperature:** -20°C to 55°C (-4°F to 131°F)  
**Charging temperature:** 0°C to 45°C (32°F to 113°F)  
**Ingress Protection:** Designed to meet IP67

## Approvals

**G7c:** SAR, RoHS, CE, RCM  
**Unit ID:** 3567xxxxxx  
**FCC ID:** XPY1CGM5NNN | IC ID: 8595A-1CGM5NNN  
**Contains FCC ID:** XPY1CGM5NNN, IC: 8595A-1CGM5NNN  
OR  
**Unit ID:** 3566xxxxxx  
**Contains FCC ID:** XPY1CGM5NNN, IC: 8595A-1CGM5NNN  
**Canada and USA:** Class I Division 1 Gr A, B, C, D T4;  
Class I Zone 0 AEx da ia IIC T4; Ex da ia IIC T4 Ga  
**IECEx:** Ex da ia IIC T4 Ga  
**ATEX:** Ex da ia IIC T4 Ga  II 1 G

**G7x:** SAR, RoHS, RCM  
**FCC ID:** W77G7X | IC ID: 8255A-G7X  
**Canada and USA:** Class I Division 1 Gr A, B, C, D T4;  
Class I Zone 0 AEx da ia IIC T4; Ex da ia IIC T4 Ga   
**IECEx:** Ex ib IIC T4 Gb

**LEL:** CSA C22.2 No. 152; ISA 12.13.01

## Warranty

**G7:** two years limited warranty  
**Cartridges:** lifetime with service plan  
**Blackline Complete:** three year operating

# G7 EXO

## Product Features At-A-Glance



Gas	Sensor type	Range	Resolution
Ammonia (NH <sub>3</sub> )	Electrochemical	0–100 ppm	0.1 ppm
High-range ammonia (NH <sub>3</sub> )	Electrochemical	0–500 ppm	1 ppm
Carbon monoxide (CO)	Electrochemical	0–500 ppm	1 ppm
High-range carbon monoxide (CO)	Electrochemical	0–2000 ppm	5 ppm
Hydrogen resistant carbon monoxide (CO-H)	Electrochemical	0–500 ppm	1 ppm
Carbon dioxide (CO <sub>2</sub> )	NDIR	0–50,000 ppm	50 ppm
Chlorine (Cl <sub>2</sub> )	Electrochemical	0–20 ppm	0.1 ppm
Chlorine dioxide (ClO <sub>2</sub> )	Electrochemical	0–2 ppm	0.01 ppm
COSH	Electrochemical	0–500 ppm CO, 0–100 ppm H <sub>2</sub> S	1 ppm CO, 0.1 ppm H <sub>2</sub> S
Hydrogen cyanide (HCN)	Electrochemical	0–30 ppm	0.1 ppm
Hydrogen sulfide (H <sub>2</sub> S)	Electrochemical	0–100 ppm	0.1 ppm
High-range hydrogen sulfide (H <sub>2</sub> S)	Electrochemical	0–500 ppm	0.5 ppm
LEL-MPS (LEL-M)	Molecular property spectrometer	0–100% LEL	0.1% LEL
Nitrogen Dioxide (NO <sub>2</sub> )	Electrochemical	0–50 ppm	0.1 ppm
Oxygen (O <sub>2</sub> )	Pumped electrochemical	0–25% vol	0.1% vol
Photoionization (PID)	PID	0–4,000 ppm	0.1 ppm (0–100 ppm), 2 ppm (100–4,000 ppm)
Sulfur dioxide (SO <sub>2</sub> )	Electrochemical	0–100 ppm	0.1 ppm



## Gas Detection Features

Under and over limit alerts

Time-weighted average (TWA)

Short-term exposure limit (STEL)

Low and high gas alerts

Bump test and calibration notification

Bump test and calibration failure

## Size & Weight

**Material:** rugged housing built from aluminum, plastic and rubberized bumpers

**Size:** 385 mm x 188 mm x 220 mm  
(15.1" x 7.4" x 8.7")

**Weight:** 11.8 kg (26 lb)

## User interface

**Display:** 480 by 640 pixel, eight-color active matrix liquid crystal display

**Menu system:** driven by three-button keypad,

**Power button:** on/off

**SOS latch:** send emergency alert

**Multi-language support:** (EN, FR, ES, DE, IT, NL, PT)

## User notification

**Green connectivity light:** blinking (powered), continuous (connected)

**360-degree visible yellow and red lights**

**Yellow light:** pending and warning alarms

**Red light:** red alert communicated

**Blue LiveResponse light:** confirmation that a monitoring team has acknowledged the alert

**Alarm sound pressure:** ~110 dB @ 30 cm (11.8")

**Two-way voice calling sound pressure:**

~95 dB @ 30 cm (11.8")

## Power & Battery

**Rechargeable battery capacity:** 144 Ah (LiFePO4)

**Battery life in diffusion mode:** 100 days at 20°C (68°F), LEL-IR, H2S, CO and O<sub>2</sub> config.

**Battery life in pump mode:** 30 days at 20°C (68°F), LEL-IR, H2S, CO and O<sub>2</sub> config.

**Charge time:** TBD

**Intrinsically safe trickle-charging port:** yes, supports G7 EXO continuous operation

## Pump Module

**Number of pump channels:** four

**Sampling period per channel:** adjustable

**Tubing length per channel:** up to 30 m (100 ft)

**Duty cycle:** single-channel sample time, continuous; multi-channel sample time, configurable

## Output Ports

Intrinsically safe, highly configurable external signal ports designed to integrate with external alarms and electrical systems.

Four pins per output port:

**Pin 1:** Voc=12v, Isc=100mA, Ca=1uF, La=4mH

**Pin 2:** Voc=8v, Isc=100mA, Ca=10uF, La=4mH

**Pin 3:** ground-side switch, IS requirements TBD

**Pin 4:** ground

## Satellite Wireless Radio Module

**User-upgradeable add-on:** yes

**Network:** Iridium, global coverage

**Antenna:** pre-installed from factory

## Cellular Wireless Radio

**Coverage:** 100+ countries and 200+ carriers

**Europe:** 2G/4G

**North America:** 3G/4G

**Australia/New Zealand:** 3G/4G

**Antenna:** regionally optimized

## Wireless updates

**Device configuration changes:** yes

**Device firmware upgrade OTA:** yes

## Location technology

**GPS radio:** 48-channel high sensitivity

**Assisted-GPS:** yes

**GPS accuracy:** ~5 m (16 ft) outdoors, open sky

**Location beacon radio:** yes, Blackline's proprietary location beacon technology and floor/site plans

## Environmental

**Storage temp.:** -40°C to 60°C (-40°F to 140°F)

**Operating temp.:** -40°C to 55°C (-40°F to 131°F)

**Charging temp.:** 0°C to 45°C (32°F to 113°F)

**Ingress protection:** Designed to meet IP65

## Approvals (targeted)

RoHS, CE, RCM

**Canada & USA:** Class I Division 1 Group A,B,C,D T4; Class I Zone 0 AEx da ia IIC T3; Ex da ia IIC T4 Ga

**IECEX:** Ex da ia IIC T4 Ga

**ATEX:** Ex da ia IIC T4 Ga

**LEL:** CSA C22.2 No.152; ISA 12.13.01

## Accessories

Solar panel for continuous monitoring.

Mounting options include wall, 1 ft tripod, 3 ft tripod, magnetic and rail/scaffold mounts

## Gas Sensor Options

Ammonia, high-range ammonia, carbon dioxide, carbon monoxide, high-range carbon monoxide, chlorine, chlorine dioxide, COSH, hydrogen cyanide, hydrogen sulfide, high-range hydrogen sulfide, hydrogen-resistant carbon monoxide, LEL-infrared, LEL-pellistor, nitrogen dioxide, oxygen, ozone, photoionization detector, sulfur dioxide

## Blackline Live Web Application

Cloud-hosted safety monitoring web application is highly customizable for every customer requirement. Includes live map, employee address book, user roles, alert management, device configurations, alert setups and reporting

## Warranty

**G7 EXO area monitor:** three-year hardware warranty

**Blackline Complete lease option:** provides comprehensive warranty for full duration of the lease term

All specifications subject to change without notice.



FOR MORE INFORMATION, VISIT:  
**BlacklineSafety.com/oil-gas**

**NORTH AMERICA** Toll-free: 1-877-869-7211 | [sales@blacklinesafety.com](mailto:sales@blacklinesafety.com)

**EUROPE** Phone: +44 1787 222684 | [eusales@blacklinesafety.com](mailto:eusales@blacklinesafety.com)

**INTERNATIONAL** Phone: +1-403-451-0327 | [sales@blacklinesafety.com](mailto:sales@blacklinesafety.com)

**blacklinesafety**

» [BlacklineSafety.com](https://BlacklineSafety.com)