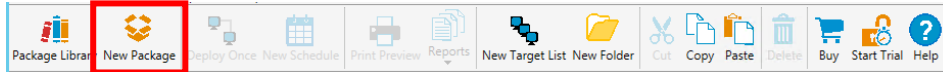
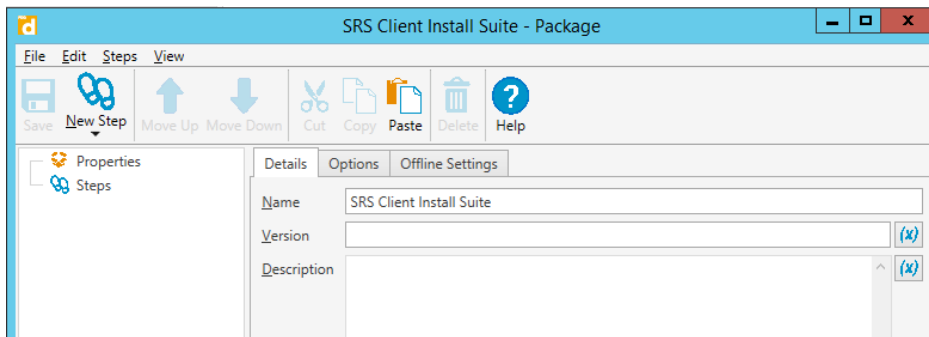


## PDQ Deploy Cheat Sheet for Client Suite

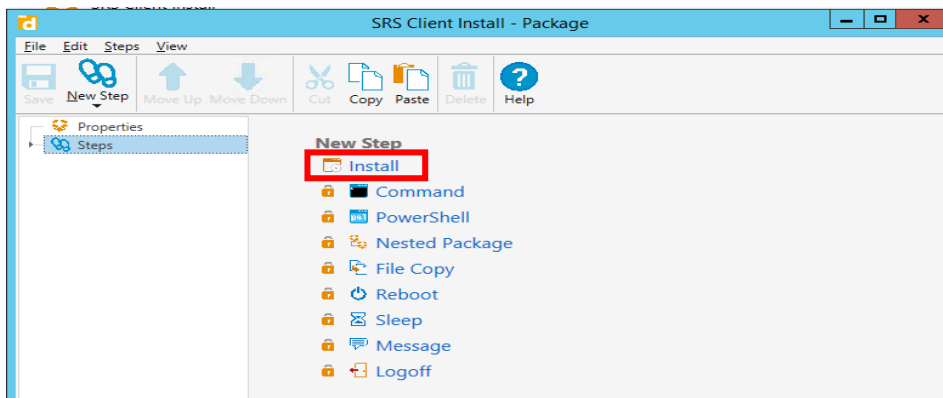
- Download and install the latest version of PDQ Deploy from <https://www.pdq.com/download/> onto the SRS App Server
- Enter credentials for an account with domain or local administrative rights to the workstation
- Create a New Package



- Give the Package a descriptive name. We recommend keeping the text in fields generic for easy reuse

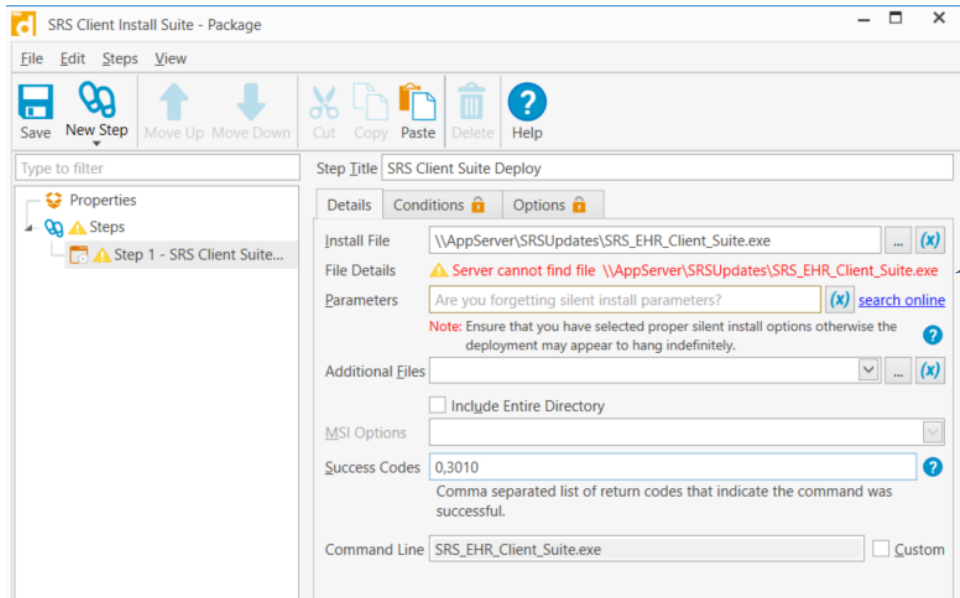


- Select Steps and click Install



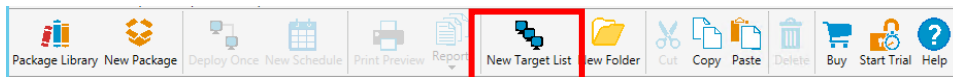
# Nextech | SRSPRO

- Step Title - Enter a descriptive
  - Install File - Browse to the SRSUpdates shared folder on your primary server as indicated in the pre-upgrade notification sent you and select the SRS\_EHR\_Client\_Suite.exe executable file
  - Success Codes - Use codes as shown below
  - Click Save
- NOTE: The Conditions and Options tabs are not available in the free version of PDQ Deploy

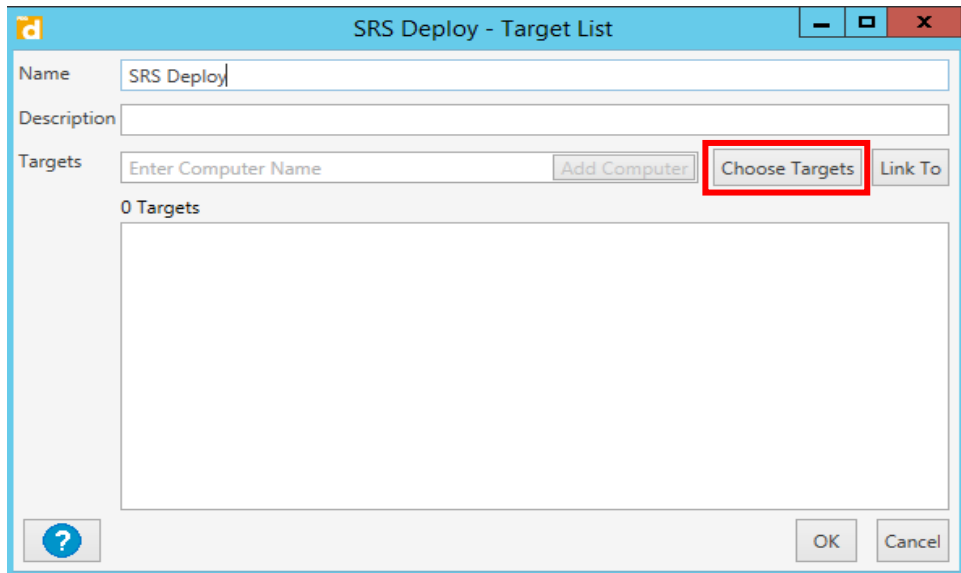


The file path here is for example only and you should not receive this error

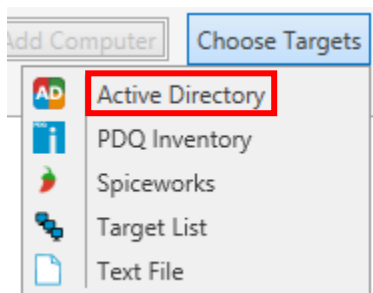
- Create a New Target List



- Enter a descriptive package name and click Choose Targets



- Select Active Directory

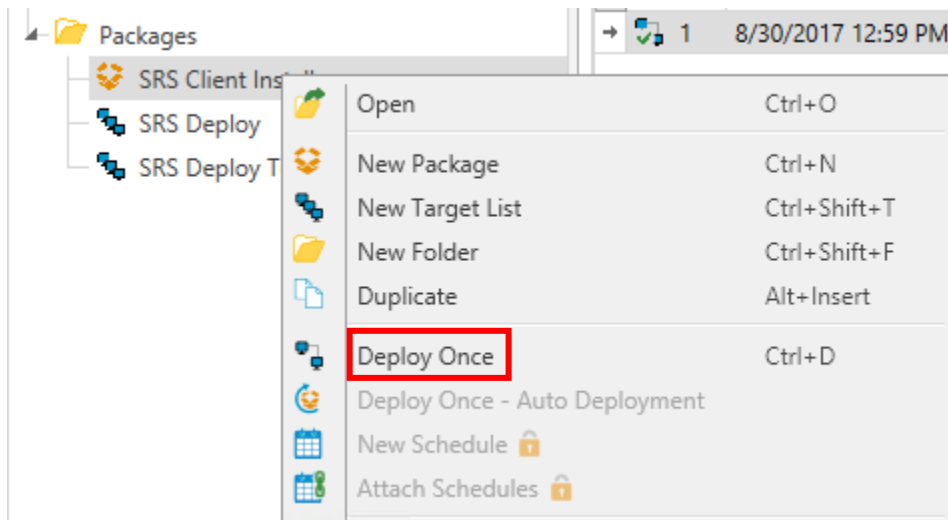


- Select from the list of Computers and click the > sign to move the selected computer(s) to the Targets list or click >> to move all computers to the Targets list

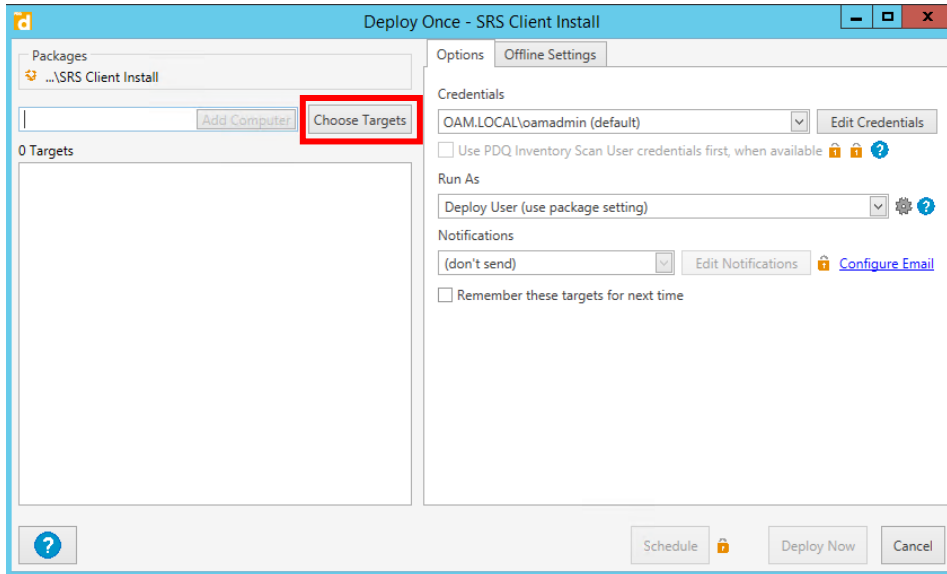


- When ready to deploy, right click on the desired package and select Deploy Once

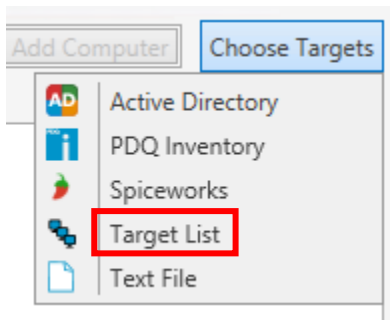
# Nextech | SRSPRO



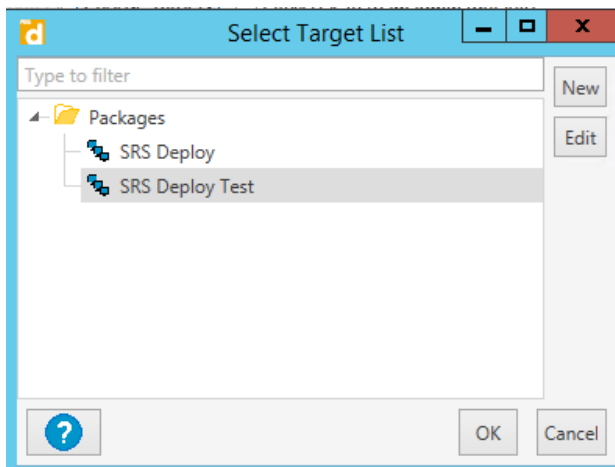
- Click Choose Targets



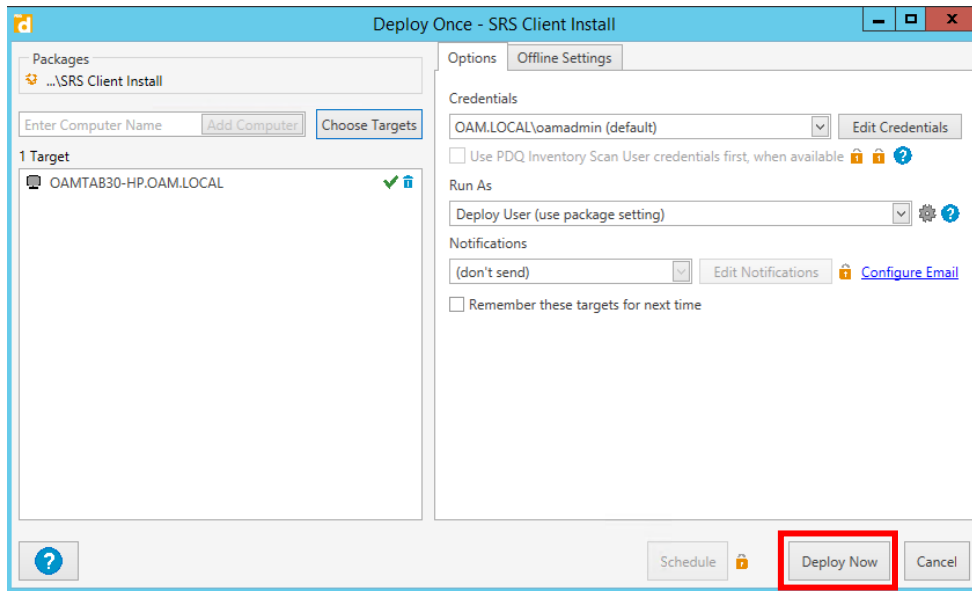
- Select Target List



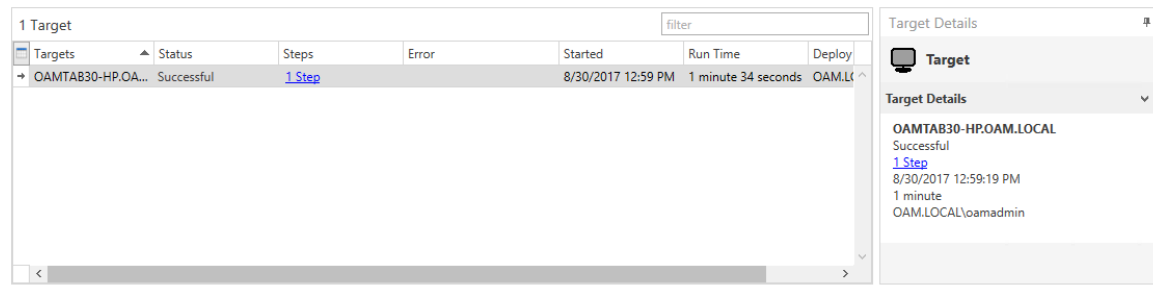
- Select desired Target List



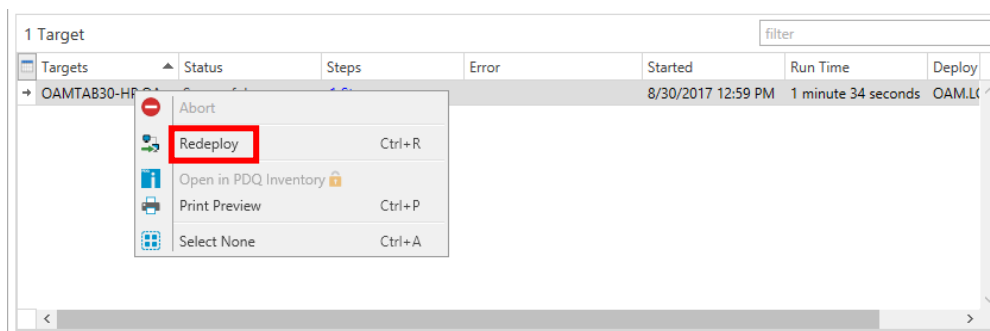
- Click Deploy Now



- Review progress and status of deployment



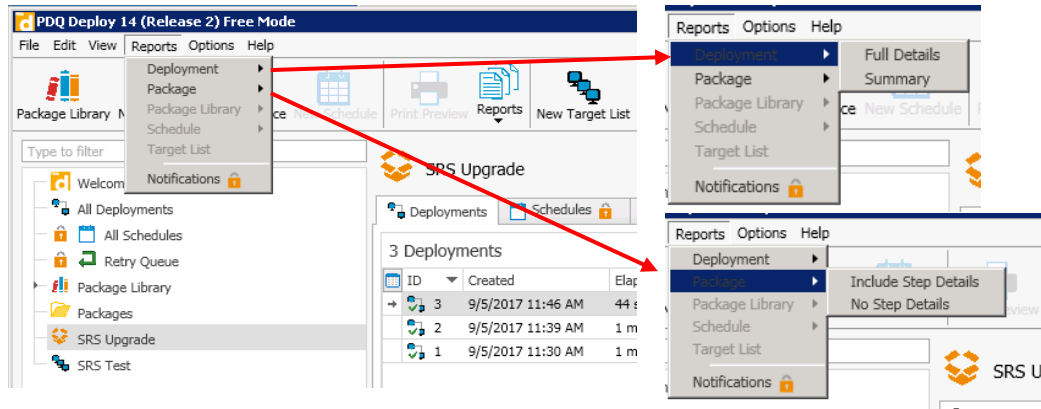
- If any of the deployments to a machine fails, right click on the machine and select Redeploy after the issue with the machine in question has been resolved. Most failures are due to machines offline.



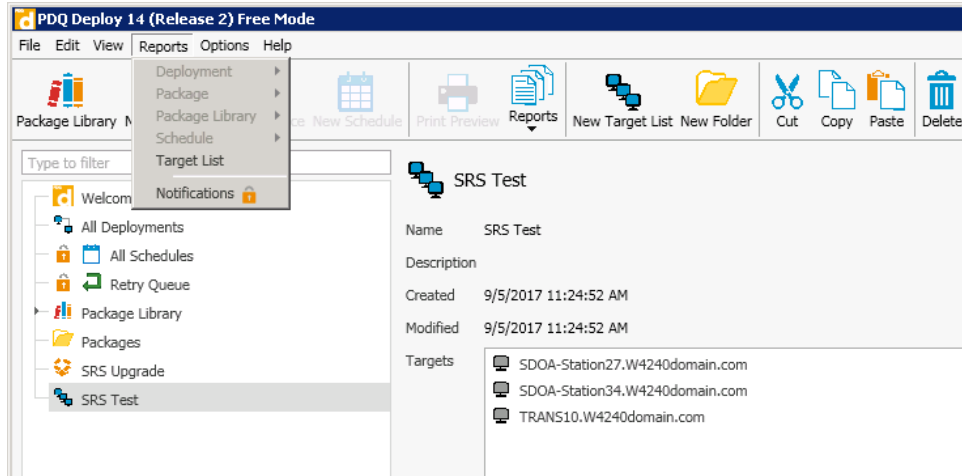
## PDQ Reports

There are a few web style reports worth mentioning which will help you to review and print your deployment strategies, and metrics. They can be presented in detail or summarized.

Available reports when a package is selected.



Available reports when a target list is selected.



An example of a summarized deployment report.

The screenshot shows a 'Print Preview' window with a toolbar at the top containing icons for print, zoom, and navigation. The profile is set to 'Summary'. A message indicates that 'Pro or Enterprise Mode' is required to edit profiles. The main content area displays the following report:

## SRS Upgrade

### Deployment Details - Summary

9/5/2017 12:22:43 PM

User	W4240DOMAIN.COM\scsadmin	Started	9/5/2017 11:46:11 AM
Schedule	-	Finished	9/5/2017 11:46:55 AM
Success Rate	100 % (1 of 1)	Elapsed	44 seconds

An example of a detailed deployment report.

The screenshot shows a 'Print Preview' window with a toolbar at the top. The profile is set to 'Full Details'. A message indicates that 'Pro or Enterprise Mode' is required to edit profiles. The main content area displays the following report:

## SRS Upgrade

### Deployment Details - Full Details

9/5/2017 12:22:43 PM

User	W4240DOMAIN.COM\scsadmin	Started	9/5/2017 11:46:11 AM
Schedule	-	Finished	9/5/2017 11:46:55 AM
Success Rate	100 % (1 of 1)	Elapsed	44 seconds

Name	Status	Steps
SDOA-Station27.W4240domain.com	Successful	1 Step

Started	Finished	Run Time	Deploy User
9/5/2017 11:46:11 AM	9/5/2017 11:46:55 AM	44 seconds	W4240DOMAIN.COM\scsadmin