

1F+D

1 Bedroom  
+ Den

Interior  
608 sf

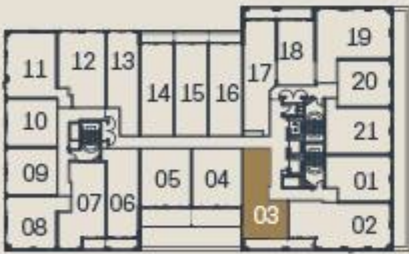
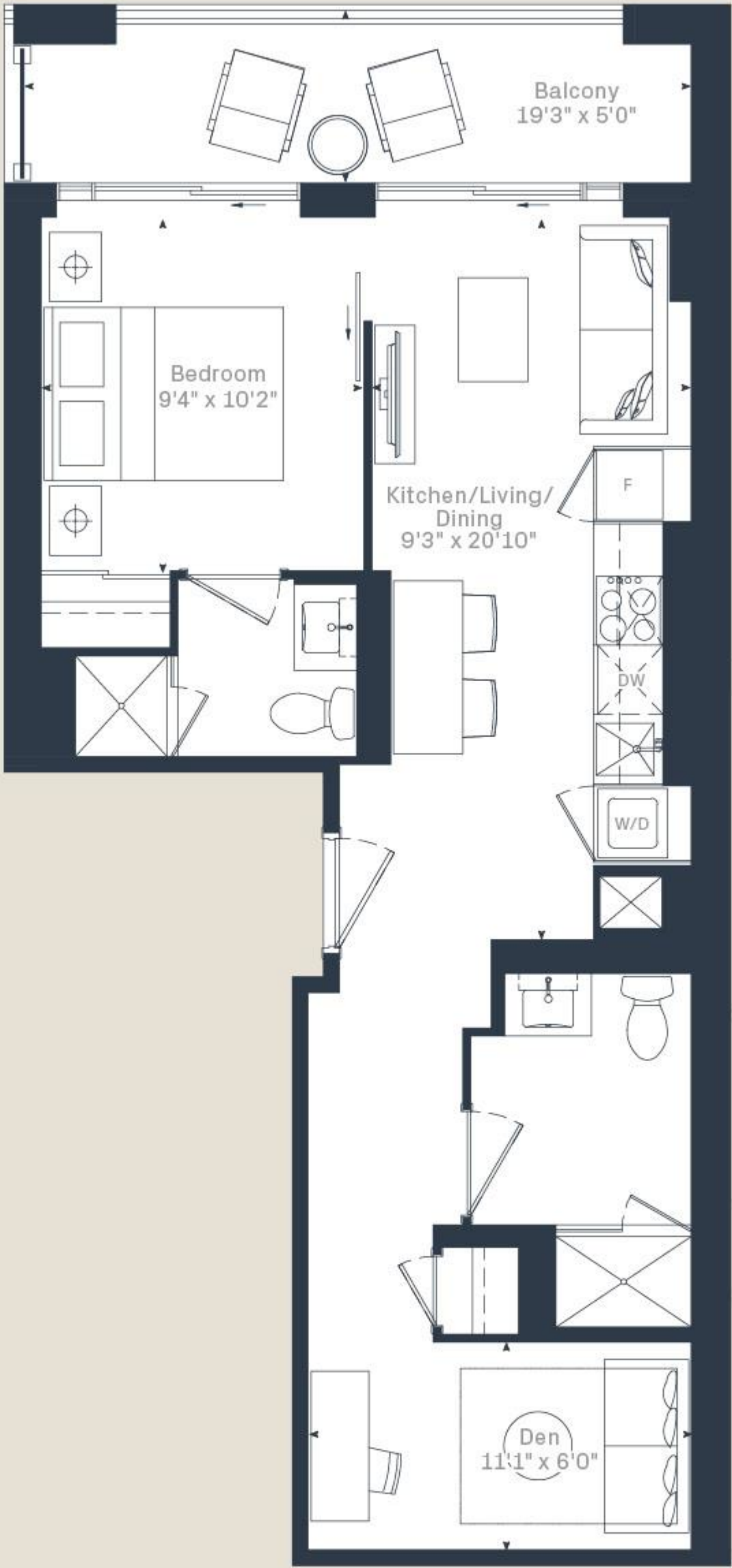
Exterior  
92 sf

Total  
700 sf

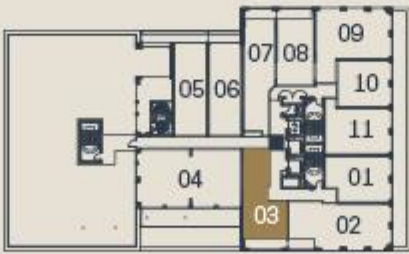
HOUSE  
*of* ASSEMBLY

At Sterling Junction

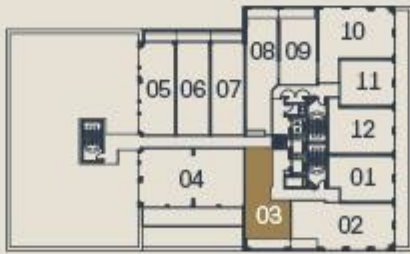
#1603 - \$795,990



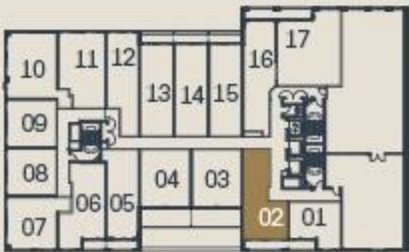
9TH - 15TH FLOOR



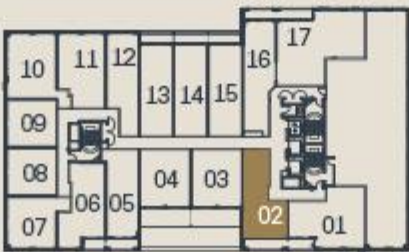
16TH FLOOR



17TH FLOOR



5TH FLOOR



6TH FLOOR



7TH FLOOR



8TH FLOOR

Dimensions, specifications, layouts and materials are approximate only and are subject to change without notice. Tile patterns may vary. Window size and location may vary. Actual usable floor space may vary from stated floor area. Balcony and terrace area is approximate and not included in net suite area. The purchaser acknowledges that the actual unit purchased may be a reverse layout to the plan shown. See Sales Representative for full details. E.&O.E.



1B+D

1 Bedroom  
+ Den

Interior  
595 sf

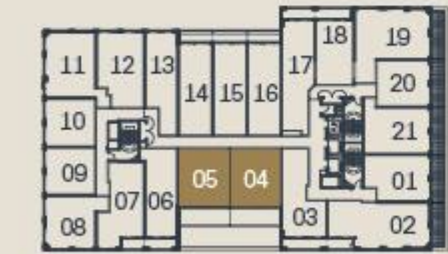
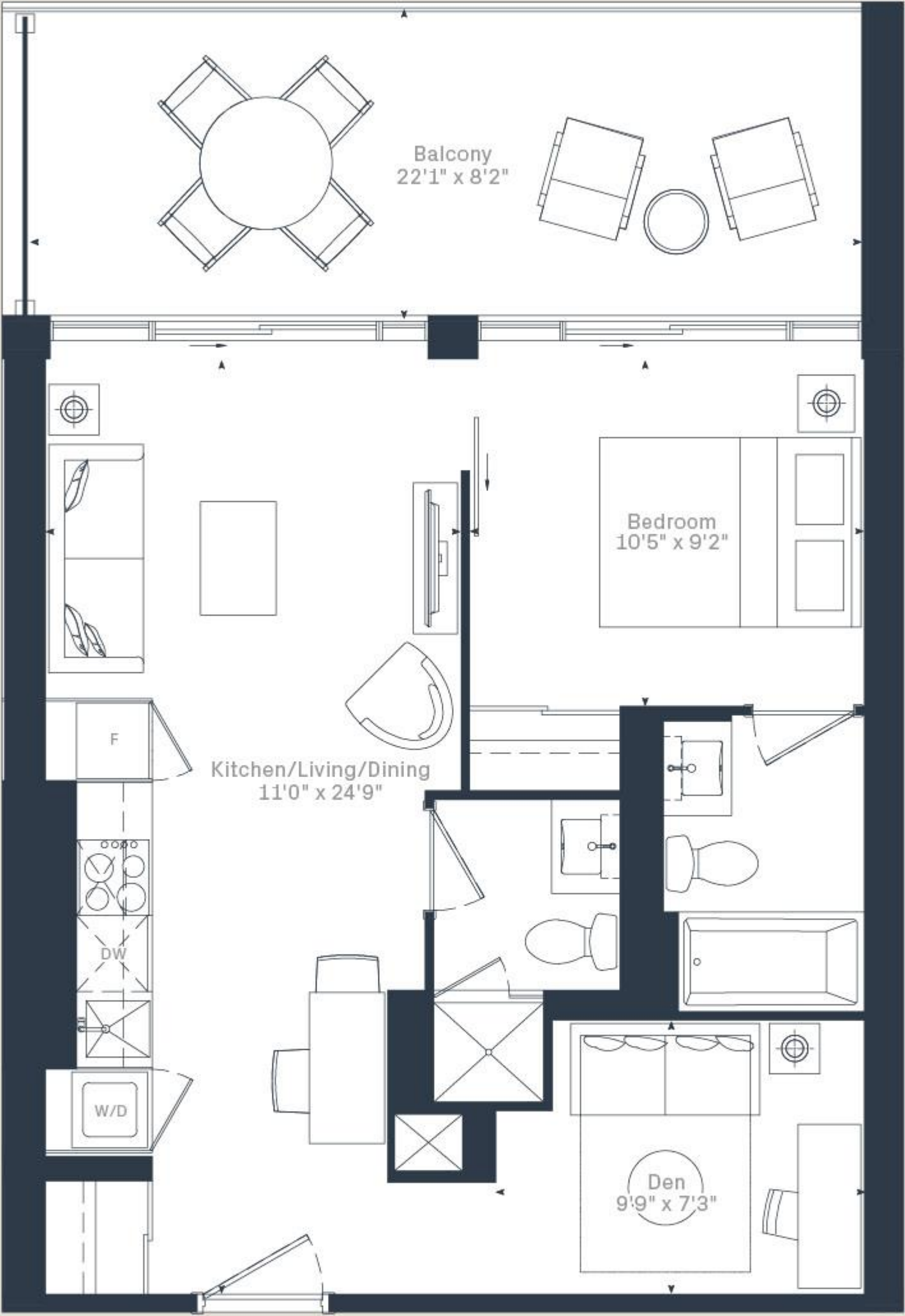
Exterior  
181 sf

Total  
776 sf

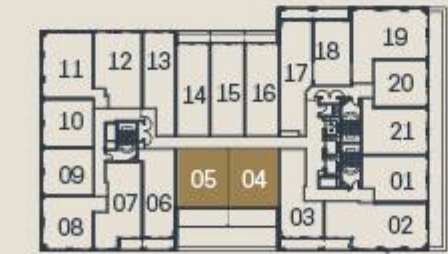
HOUSE  
*of* ASSEMBLY

At Sterling Junction

#904 - \$792,990



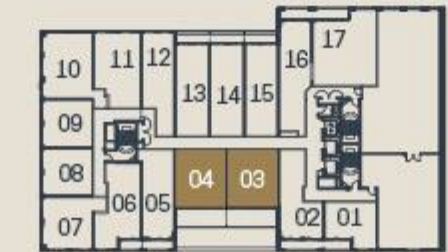
8TH FLOOR



9TH - 15TH FLOOR



4TH FLOOR



5TH FLOOR



6TH FLOOR



7TH FLOOR

Dimensions, specifications, layouts and materials are approximate only and are subject to change without notice. Tile patterns may vary. Window size and location may vary. Actual usable floor space may vary from stated floor area. Balcony and terrace area is approximate and not included in net suite area. The purchaser acknowledges that the actual unit purchased may be a reverse layout to the plan shown. See Sales Representative for full details. E.&O.E.



1A+D

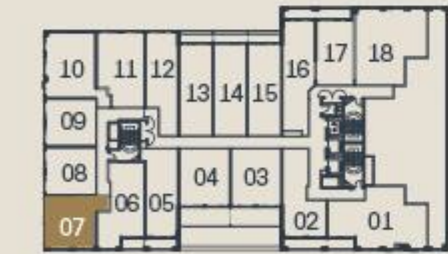
1 Bedroom  
+ Den

Interior  
590 sf

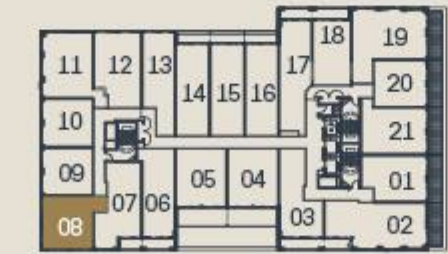
HOUSE  
*of* ASSEMBLY

At Sterling Junction

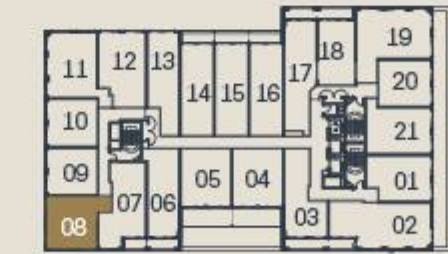
#1208 - \$733,990



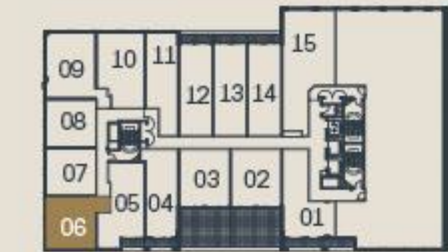
7TH FLOOR



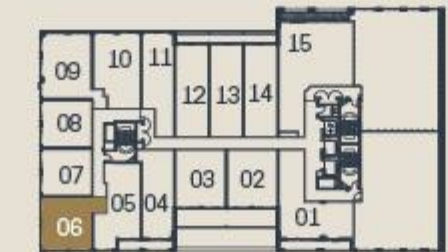
8TH FLOOR



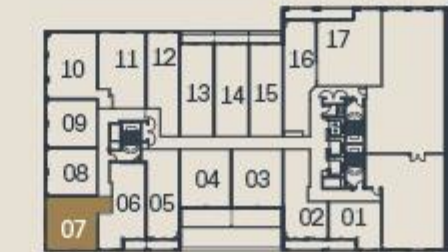
9TH - 15TH FLOOR



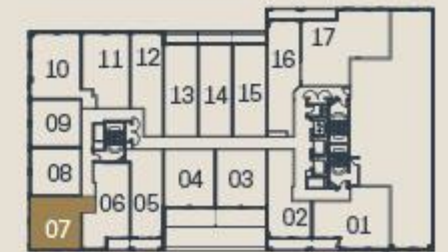
3RD FLOOR



4TH FLOOR



5TH FLOOR



6TH FLOOR

Dimensions, specifications, layouts and materials are approximate only and are subject to change without notice. Tile patterns may vary. Window size and location may vary. Actual usable floor space may vary from stated floor area. Balcony and terrace area is approximate and not included in net suite area. The purchaser acknowledges that the actual unit purchased may be a reverse layout to the plan shown. See Sales Representative for full details. E.&O.E.



2B

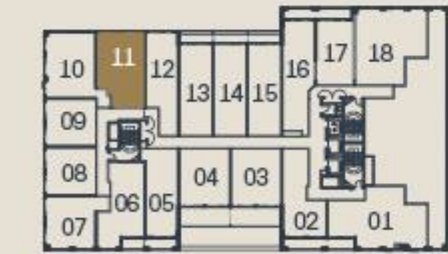
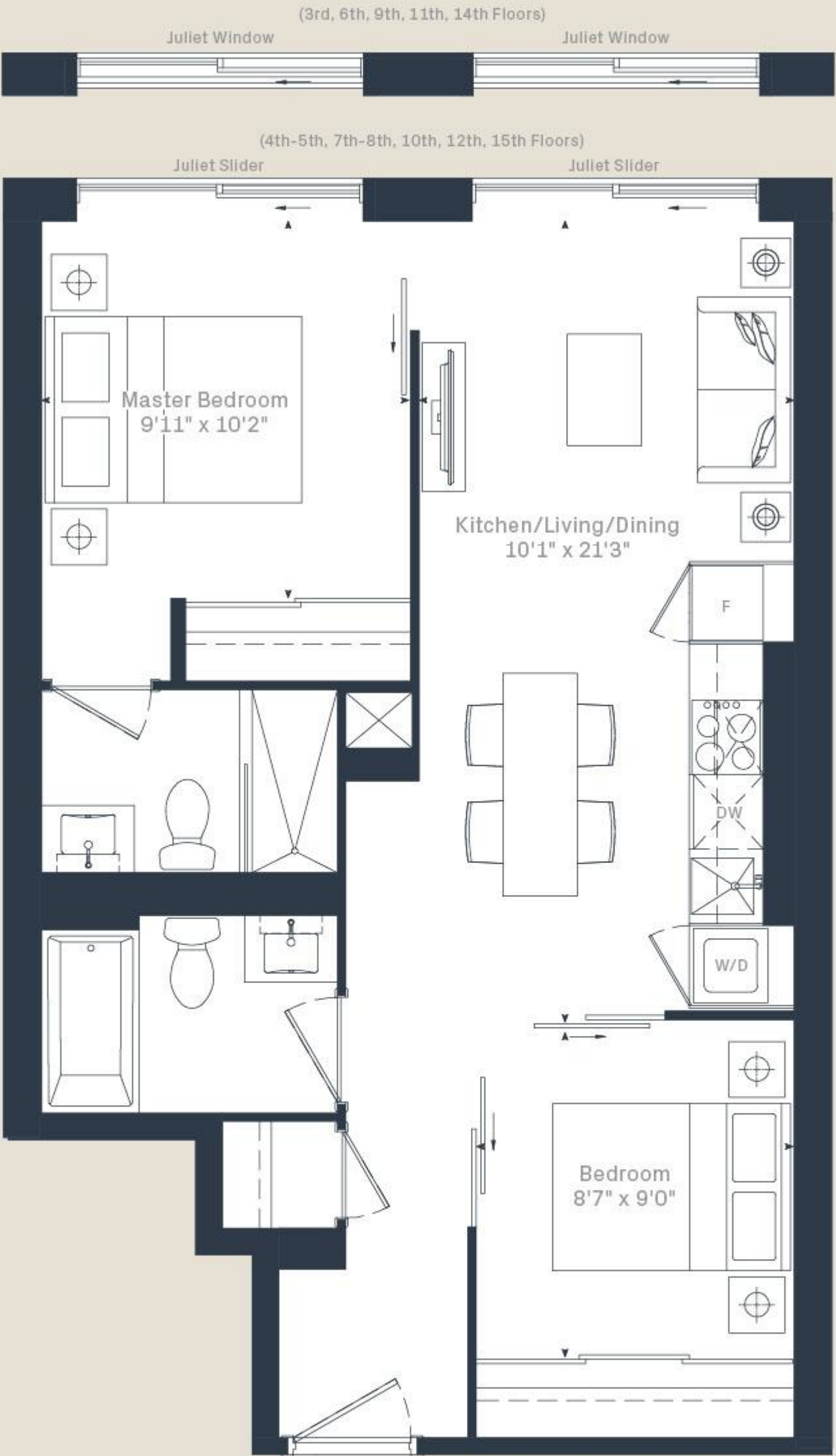
2 Bedroom

Interior  
675 sf

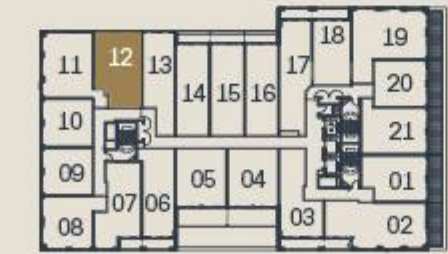
HOUSE  
*of* ASSEMBLY

At Sterling Junction

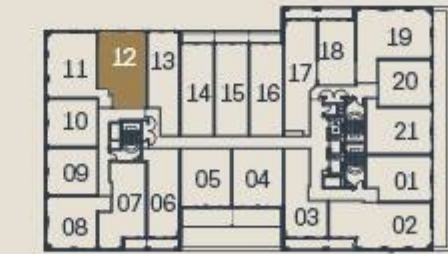
#1412 - \$839,990



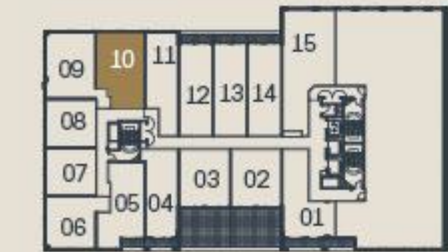
7TH FLOOR



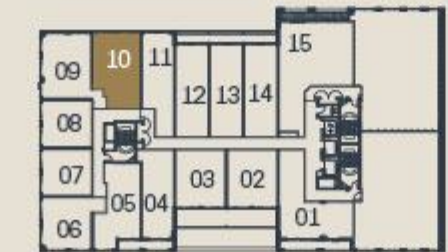
8TH FLOOR



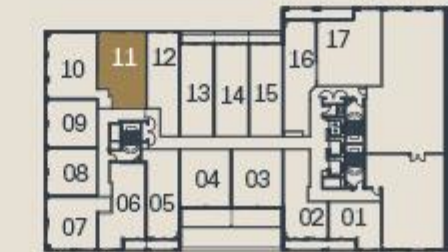
9TH - 15TH FLOOR



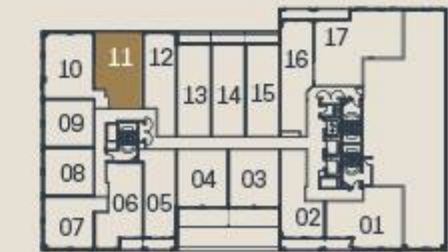
3RD FLOOR



4TH FLOOR



5TH FLOOR



6TH FLOOR

Dimensions, specifications, layouts and materials are approximate only and are subject to change without notice. Tile patterns may vary. Window size and location may vary. Actual usable floor space may vary from stated floor area. Balcony and terrace area is approximate and not included in net suite area. The purchaser acknowledges that the actual unit purchased may be a reverse layout to the plan shown. See Sales Representative for full details. E.&O.E.

MARLIN  
SPRING

g Greybrook  
Realty Partners

1C+D

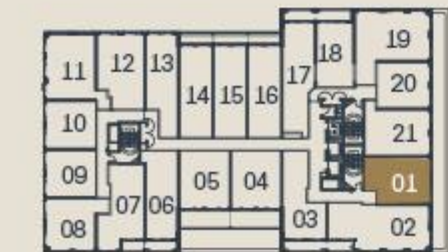
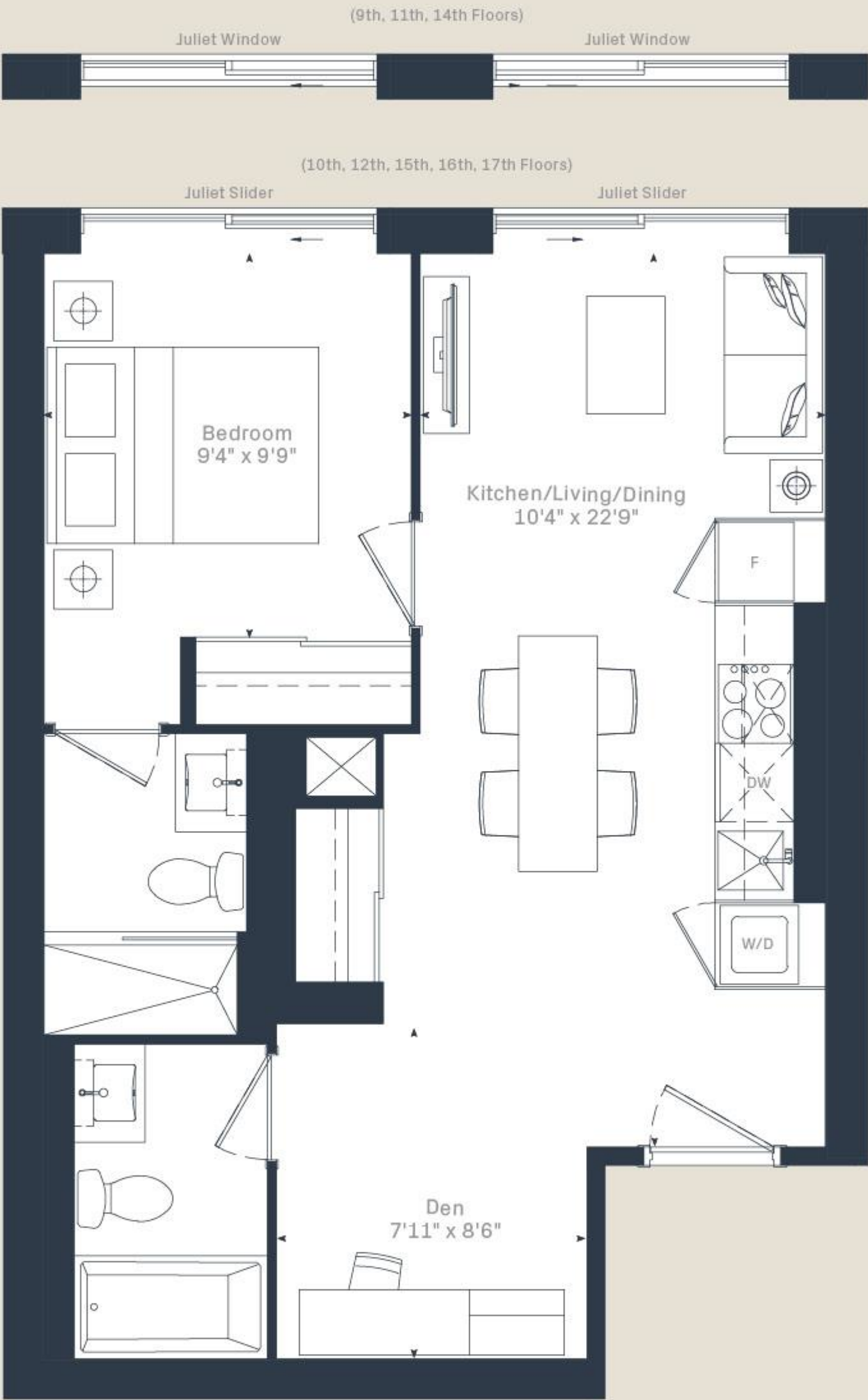
1 Bedroom  
+ Den

Interior  
596 sf

HOUSE  
*of* ASSEMBLY

At Sterling Junction

#901 - \$745,990



9TH - 15TH FLOOR



16TH FLOOR



17TH FLOOR

Dimensions, specifications, layouts and materials are approximate only and are subject to change without notice. Tile patterns may vary. Window size and location may vary. Actual usable floor space may vary from stated floor area. Balcony and terrace area is approximate and not included in net suite area. The purchaser acknowledges that the actual unit purchased may be a reverse layout to the plan shown. See Sales Representative for full details. E.&O.E.

MARLIN  
SPRING

g Greybrook  
Realty Partners



1D

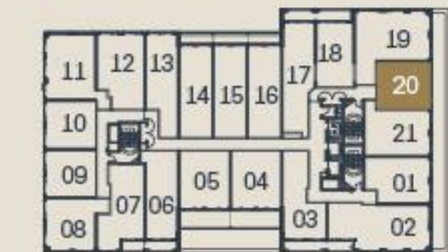
1 Bedroom

Interior  
508 sf

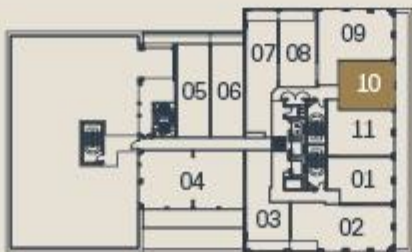
HOUSE  
*of* ASSEMBLY

At Sterling Junction

#1220 - \$661,990



9TH - 15TH FLOOR



16TH FLOOR



17TH FLOOR

Dimensions, specifications, layouts and materials are approximate only and are subject to change without notice. Tile patterns may vary. Window size and location may vary. Actual usable floor space may vary from stated floor area. Balcony and terrace area is approximate and not included in net suite area. The purchaser acknowledges that the actual unit purchased may be a reverse layout to the plan shown. See Sales Representative for full details. E.&O.E.

MARLIN  
SPRING

Greybrook  
Realty Partners

1C

1 Bedroom

Interior  
502 sf

Exterior  
77 sf

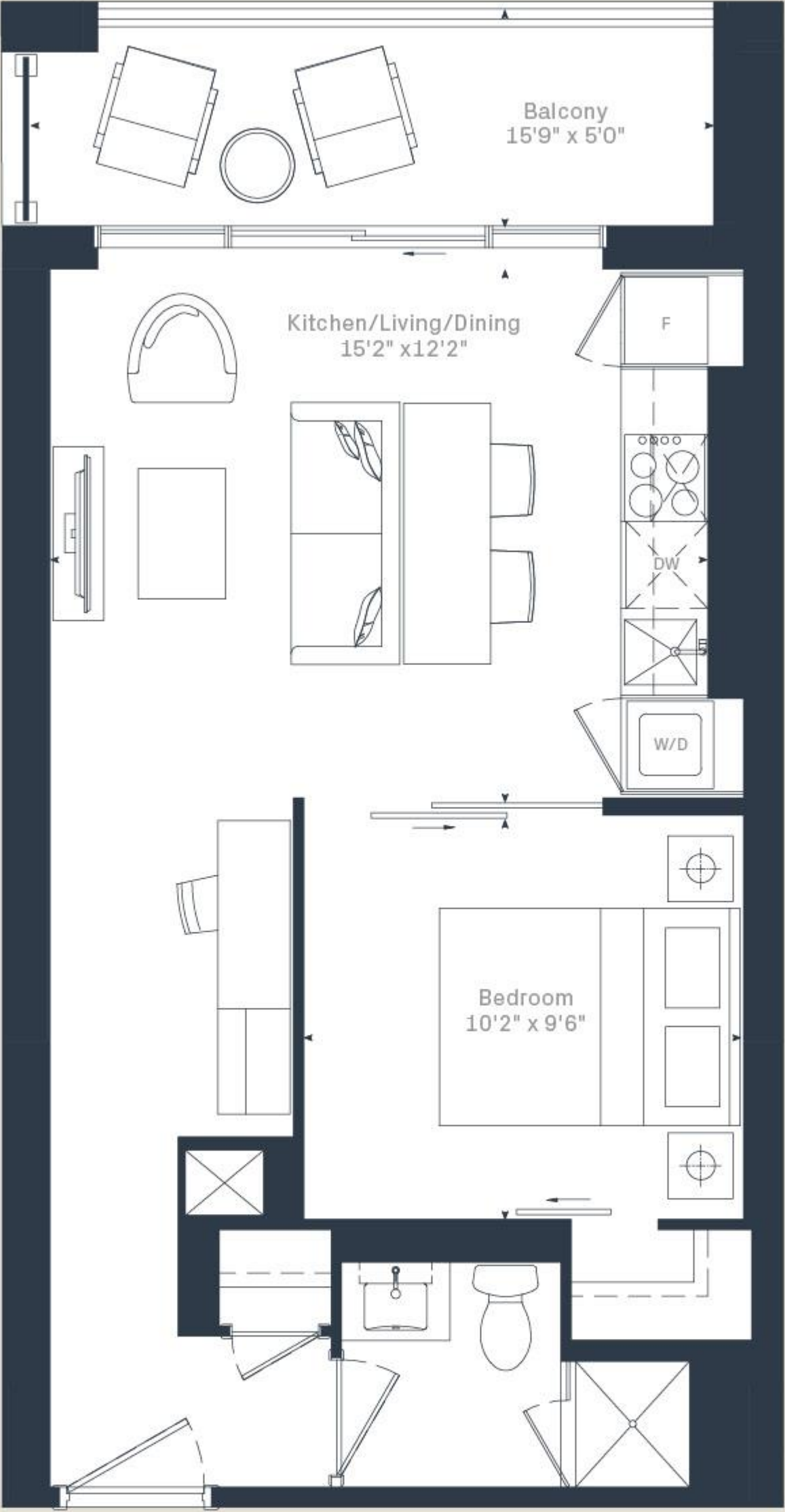
Total  
579 sf

HOUSE  
*of* ASSEMBLY

At Sterling Junction

#1218 - \$659,999

SOLD



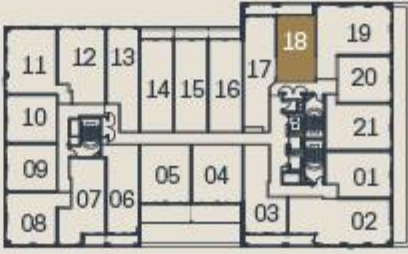
17TH FLOOR



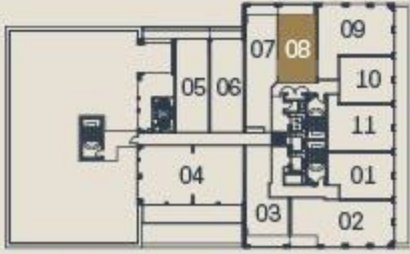
7TH FLOOR



8TH FLOOR



9TH - 15TH FLOOR



16TH FLOOR

Dimensions, specifications, layouts and materials are approximate only and are subject to change without notice. Tile patterns may vary. Window size and location may vary. Actual usable floor space may vary from stated floor area. Balcony and terrace area is approximate and not included in net suite area. The purchaser acknowledges that the actual unit purchased may be a reverse layout to the plan shown. See Sales Representative for full details. E.&O.E.



1B

1 Bedroom

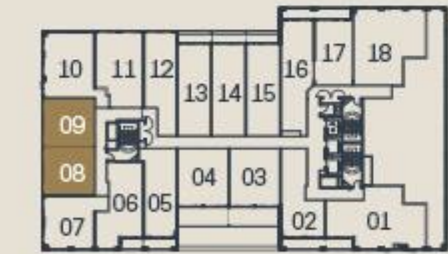
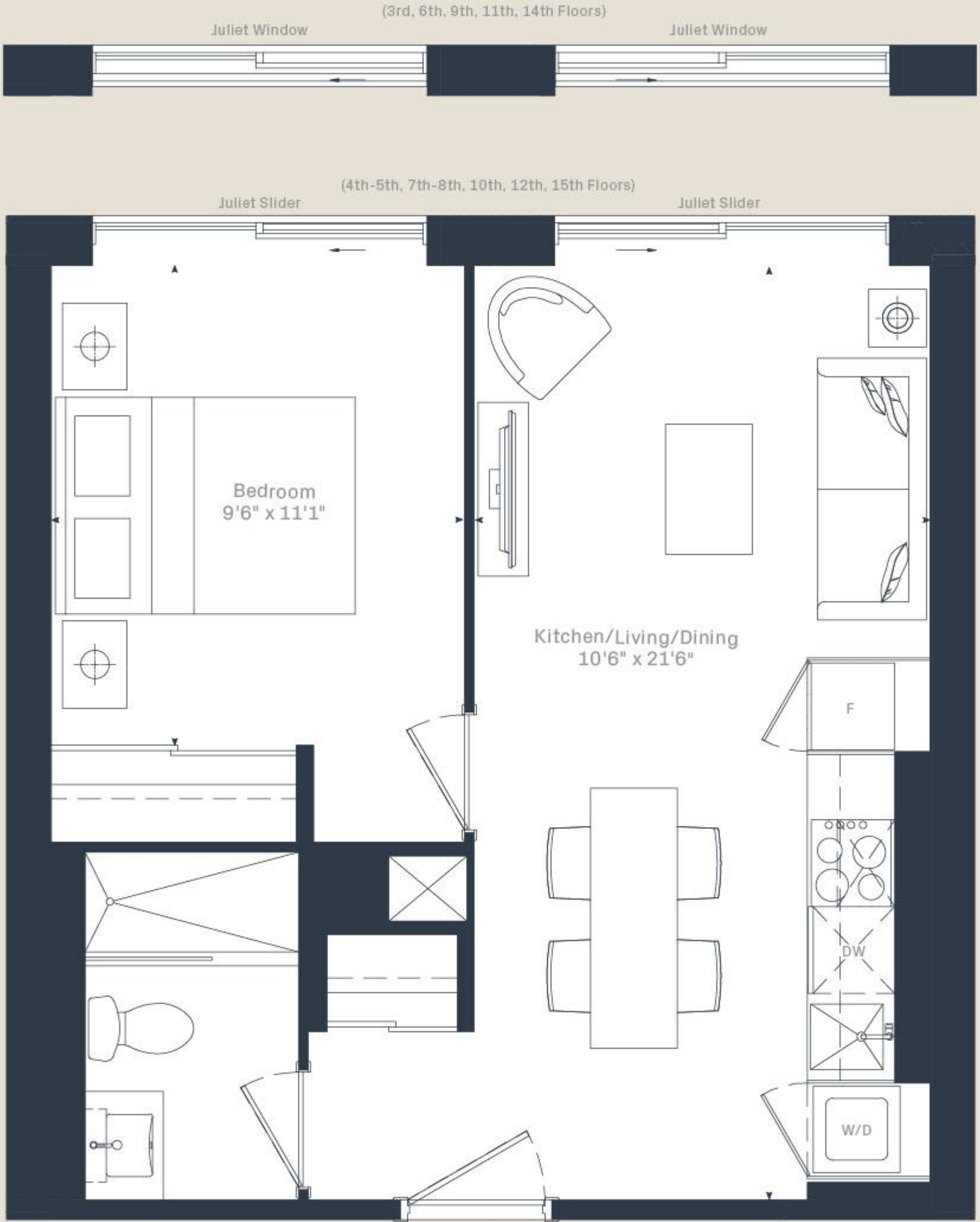
Interior  
489 sf

HOUSE  
*of* ASSEMBLY

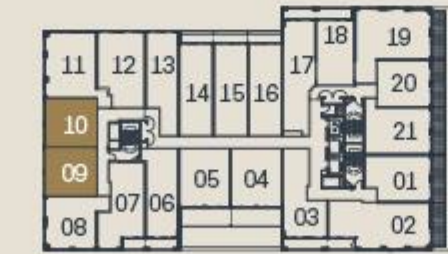
At Sterling Junction

#1409 - \$665,990

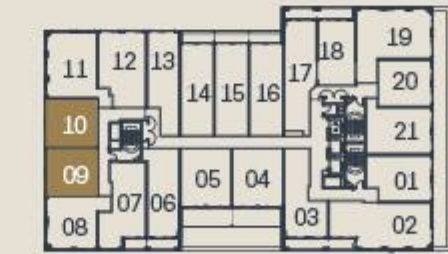
SOLD



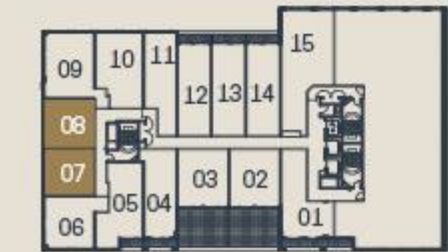
7TH FLOOR



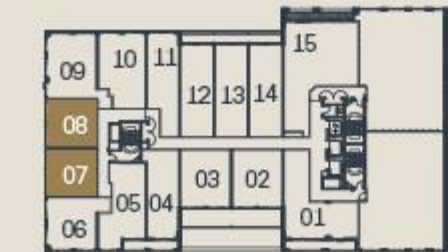
8TH FLOOR



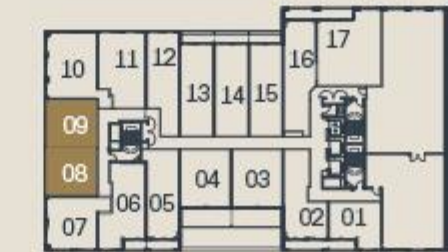
9TH - 15TH FLOOR



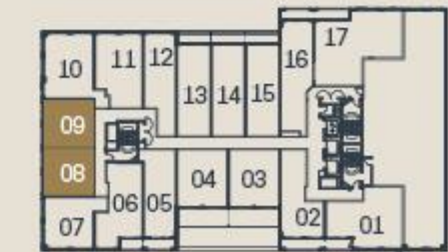
3RD FLOOR



4TH FLOOR



5TH FLOOR



6TH FLOOR

Dimensions, specifications, layouts and materials are approximate only and are subject to change without notice. Tile patterns may vary. Window size and location may vary. Actual usable floor space may vary from stated floor area. Balcony and terrace area is approximate and not included in net suite area. The purchaser acknowledges that the actual unit purchased may be a reverse layout to the plan shown. See Sales Representative for full details. E.&O.E.

MARLIN  
SPRING

g Greybrook  
Realty Partners