

A man in a blue suit and light blue face mask is looking at a smartphone. The background is blurred, showing other people in a public setting.

# Vaccination Logging & Remote Symptoms Check-ins *for* Employees

**emocha Health®**

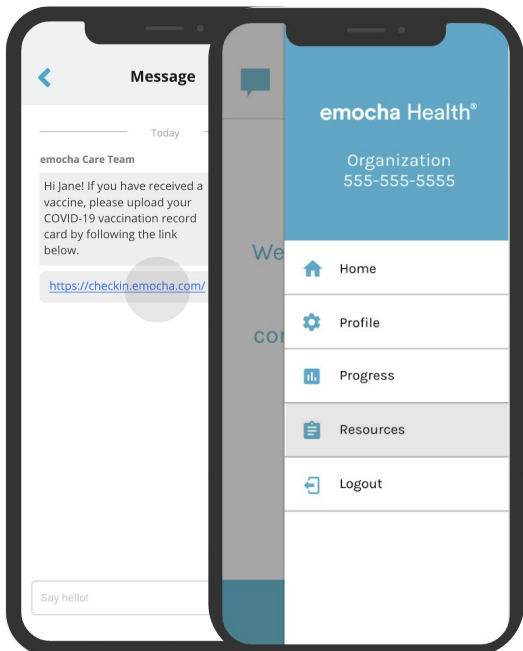
emocha.com  
info@emocha.com  
@emochaHealth

emocha was invented by world-renowned infectious disease clinicians and researchers at Johns Hopkins in 2008. Since 2015, a version of emocha has been used for monitoring public health outbreaks, including Ebola and COVID-19. emocha now serves over 300 customers across the country spanning public health, managed care organizations, health systems, and employers.

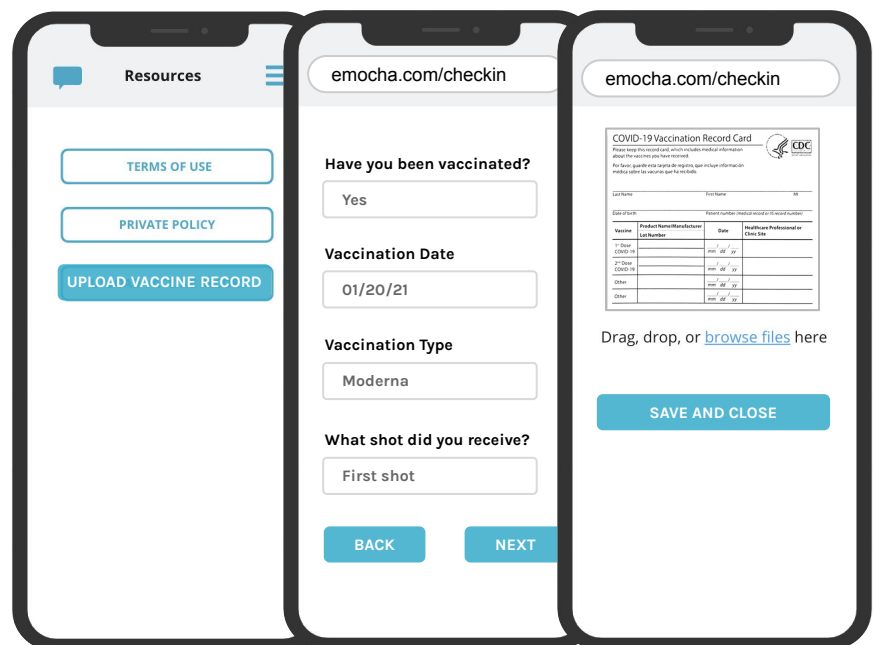
# The leading HIPAA-compliant public health platform since 2008

emocha's platform enables employees to upload proof of vaccination through our mobile app or web check-in. Users will receive in-app messages and emails asking whether they have been vaccinated, prompting them to upload an image of their vaccination card, and reminding them about second shots if necessary. In addition, we offer an optional daily symptoms monitoring service that uses short, virtual check-ins to identify, track, and manage COVID-19 symptoms. Through rapid implementation and comprehensive analytics, emocha immediately identifies symptomatic and asymptomatic users to help employers make timely decisions. With an engagement and clinical team dedicated to support and review, our vaccination and optional symptoms monitoring service focuses on human engagement: providing direct touchpoints with employees to keep your workplace and community healthy and safe.

## Encourage employees to quickly log vaccination status



Employees receive weekly in-app messages reminding them to log their vaccination status.



Upload is simple. Employees are asked to enter vaccine type and date so a an in-app reminder message and email can be sent prior to second dose.

## Generate a digital badge linked to vaccination status, reported symptoms, or exposure

Are you experiencing any of the following?

- ☐ None
- ☒ Fever or chills
- ☐ Cough
- ☒ Shortness of breath or difficulty breathing
- ☐ Fatigue
- ☐ Muscle or body aches
- ☐ Headache
- ☐ New loss of taste or smell
- ☒ Sore throat
- ☐ Congestion or runny nose
- ☐ Nausea or vomiting
- ☐ Diarrhea

BACK | NEXT

**Badge**

**Jane Doe**  
ID: 1216990

**Green Badge**  
Why is my badge green?

**Yellow Badge**  
Why is my badge yellow?

EXPIRES: 06/04/2021 11:59PM

Employees use the emocha app daily or as needed to report any symptoms or exposure to COVID-19, with an option to document vaccination status. Every participant receives a Digital Badge that communicates whether or not it is safe to return to the workplace. Vaccination status can be linked to badge status if desired.

## Offer rapid access to clinical support and triage

Messages

Hi there!

Due to your yellow badge, we ask that you stay home for your safety and the safety of others.

Please continue to check-in daily. Once you are symptom free and your badge is green we welcome you back.

If you would like to discuss your symptoms or possible exposure with a clinician click the link below: [emocha.com/triage](https://emocha.com/triage)

We are here to support you! If you need technical assistance please email us at [helpdesk@emocha.com](mailto:helpdesk@emocha.com).

For questions related to HR, please call [555-555-5555](tel:555-555-5555).

send

[emocha.com/triage](https://emocha.com/triage)

**emocha Health®**

Please call [\(410\)-555-5555](tel:410-555-5555) to connect with our clinical triage team.

Your case number: 1234

### User



"Hey there - I got a yellow badge, but I don't think my symptoms are related to COVID. Can we discuss?"

"Of course - Based on what you've told me, I'm recommending you go ahead and get tested. Let me know if you need help finding a location."

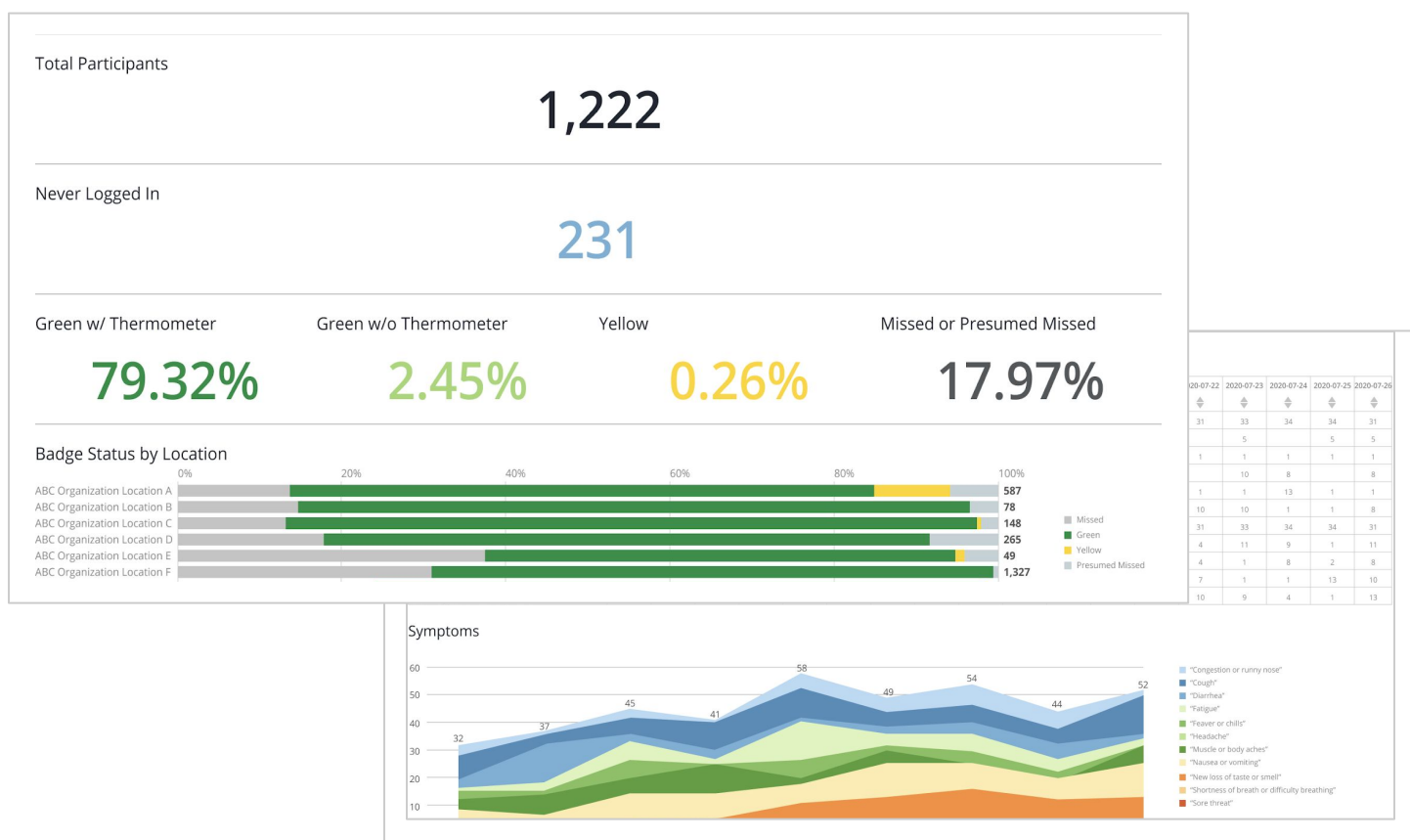


### Clinician



# Leverage individual and population level analytics for early insight on outbreaks to inform your decision making and strategy

emocha provides leadership and management with access to actionable dashboards that communicate which cohorts are have concerning levels of symptoms, positive test results, or vaccination. These dashboards allow your workplace to better allocate workplace resources, manage risk, and maximize capacity.



## Essential Data Capture

- + Individual and population-level analytics
- + Dashboards visualizing vaccination status, test results, and badge status
- + Symptoms trends by location
- + Symptomatic vs. asymptomatic roster
- + Detailed fever tracker that displays critical temperature readings across time
- + List of declined / non-adherent users

## Implementation and Service Details

- + Bulk upload of all users into emocha
- + Configuration of mobile app
- + emocha staff review of concerning symptom reports
- + Configuration of HIPAA-secure analytics portal
- + Training of key staff on all reporting dashboards
- + Turn-key launch of program

---

Helping you manage an  
effective employee safety  
strategy by reducing risk  
and enabling a healthier  
workplace.

---

**emocha Health®**