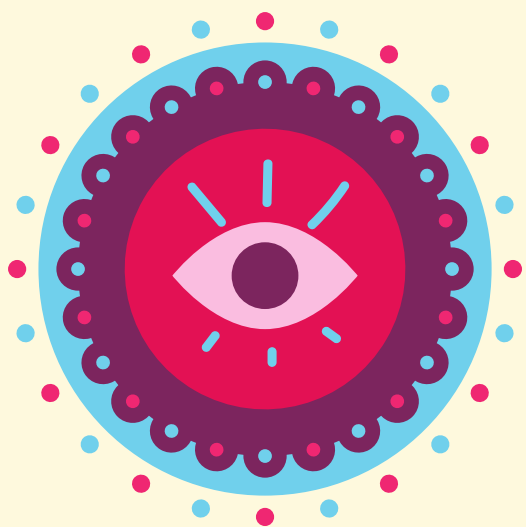
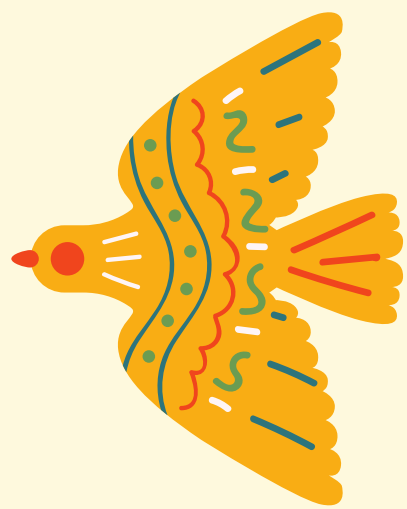


Success Guide

Differentiation



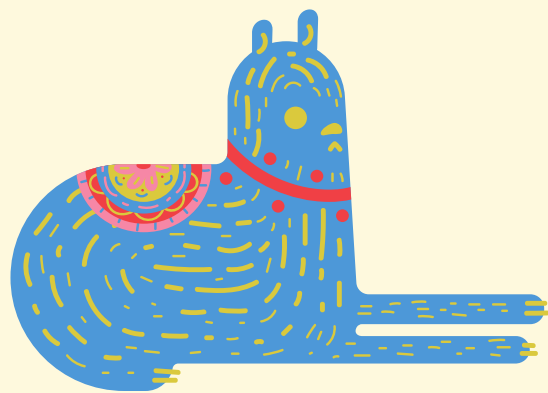
TIME recognizes the different work paces of our students. Try inviting students to share how long they work on assignments so that you can make informed decisions when you plan lessons.



READINESS is the understanding, knowledge and skill students start with. Try adjusting the content or product while maintaining the same process for all learners.



AFFECT is both mood and energy. Try gathering the larger context for individuals and the group and address detractors like health, school events, community issues, and even the weather.



INTERESTS provide an entry point for your content area. Try varying the examples and analogies you use. When uncertain, ask "what does this topic remind you of?"



LEARNING PROFILE is a non-permanent preference a student has for taking in information. Try varying your output style throughout the week or unit so increase your chances of matching different learners.