

# S-5!®

## *The Right Way*

### Protea™ Bracket

A versatile bracket for mounting solar PV to trapezoidal roof profiles

Still the most versatile trapezoidal metal roof attachment solution on the market, the S-5! Protea Bracket just got better!

The bracket features an adjustable attachment base and module attachment options to accommodate different roof profile dimensions and mounting options.

Our pre-applied EPDM gasket with peel and stick adhesive makes installation a snap, ensuring accurate and secure placement the first time.

With no messy sealants, faster installation, and a weather-proof fit, Protea Bracket offers you the most versatile solar attachment solution available.

---

**Protea Bracket\* can be used for rail mounting or "direct-attach" with S-5! PVKIT®**

---

\*When Protea Bracket is used in conjunction with the S-5! PVKIT, an additional nut is required during installation.



### Features and Benefits

- 34% lighter - saves on shipping
- Stronger L-Foot™
- Load-tested for engineered application
- Corrosion-resistant materials
- Adjustable - Fits rib profiles up to 3"
- Peel-and-Stick prevents accidental shifting during installation
- Fully pre-assembled





Protea™ Bracket is the perfect solar attachment solution for most trapezoidal rib, exposed-fastened metal roof profiles!

**Protea™ Bracket** is compatible with common metal roofing materials and comes with a pre-applied EPDM gasket on the base.

**Note:** All four pre-punched holes must be used to achieve tested strength. Fasteners are provided.

For design assistance, ask your distributor, or visit [www.S-5.com](http://www.S-5.com) for the independent lab test data that can be used for load-critical designs and applications. Also, please visit our website for more information including metallurgical compatibilities and specifications.

**S-5!® holding strength is unmatched in the industry.**

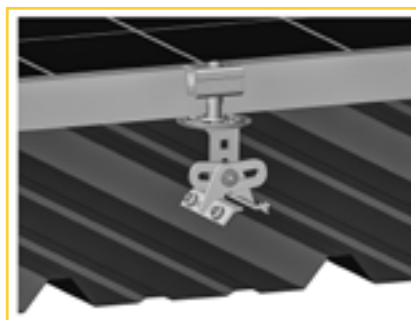
## Multiple Attachment Options:



*Side  
Mount Rail*

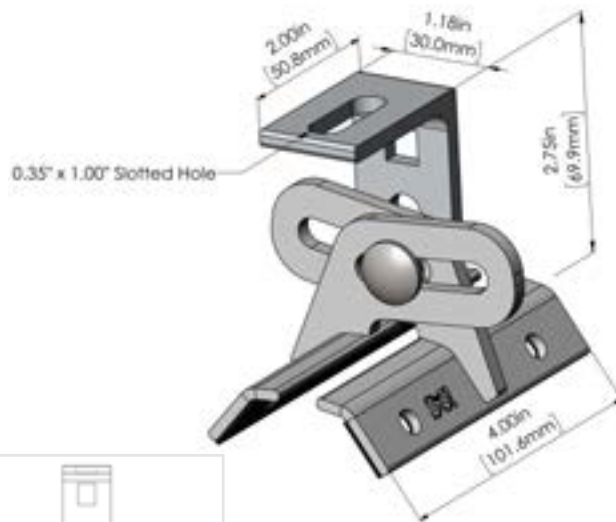


*Bottom  
Mount Rail*



*w/ S-5!  
PVKIT®  
(rail-less)*

## Protea™ Bracket



**Protea Bracket fits profiles  
up to 3 inches**

**INSTALLATION:**

**No surface preparation needed.** (1) Wipe away excess oil and debris. (2) Peel off adhesive release paper. (3) Align and mount bracket directly onto crown of panel. (4) Secure Protea Bracket through pre-punched holes, using piercing-point S-5! screws.



*Shown: S-5! PVKIT® mounted  
on the Protea Bracket for rail-less  
solar mounting on metal roofing.*

### **S-5!® Warning! Please use this product responsibly!**

Products are protected by multiple U.S. and foreign patents. For published data regarding holding strength, bolt torque, patents, and trademarks, visit the S-5! website at [www.S-5.com](http://www.S-5.com).

Copyright 2024, Metal Roof Innovations, Ltd. S-5! products are patent protected. S-5! aggressively protects its patents, trademarks, and copyrights. Version 040725

Distributed by