

# S-5!®

## The Right Way!

The right way to attach almost anything to metal roofs!

## Installation Instructions

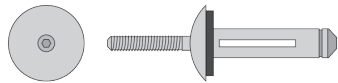
**S-5!® Warning!** Please use these products responsibly! Visit our website or contact your S-5! distributor for available load test results. The user and/or installer of these parts is responsible for all necessary engineering and design to ensure the TrapBracket™ 2.0 or TD Bracket™ has been properly spaced and configured and the proper fasteners or rivets have been selected for your specific application.

**Notice to S-5! users:** Specific layout and assembly schematics for S-5! products are the responsibility of the user or project designer. Due to the many variables involved with specific panel products, climates, snow melt phenomena, and job particulars, the manufacturer cannot and does not express any opinions as to the suitability of any S-5! assembly for any specific application and assumes no liability with respect thereto. This document is an installation guide only and the photographs and drawings herein are for the purpose of illustrating installation tools and techniques, not system designs.

## Tools Needed

- Screw Gun
- String Line
- Rag
- Tape Measure

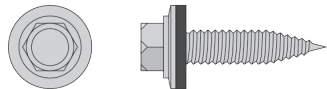
TD Bracket or TrapBracket 2.0 mounts directly onto the crown of the trapezoidal sheet using 1/4" (approx 6 mm) piercing screws (preferred) or stainless steel rivets



Not Provided

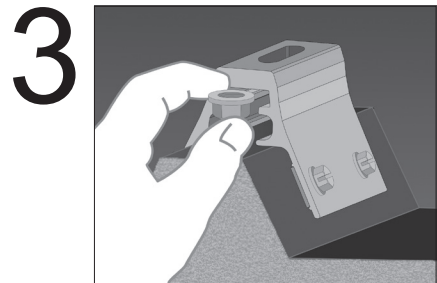
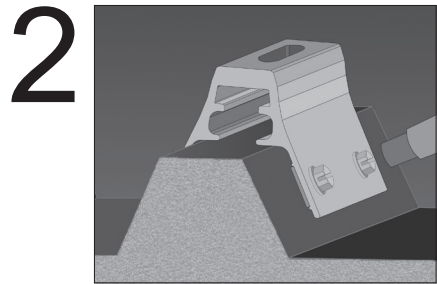
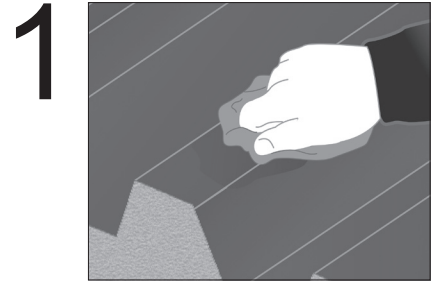
Rivet Specifications:

9/32" (7.7mm) Diameter - Alu/Alu Flat Head  
Bulb-Tite Rivet with 5/8" (16mm) EPDM Washer  
Grip: 0.032" / 0.8mm - 9.5mm



Included

Screw Specifications: 1/4" (approx 6 mm) X 1" (25mm) Length - Stainless Steel or coated steel screw - Hex Head - w/ Stainless Steel/EPDM Sealing Washer



## Bracket Placement Tips

To ensure brackets are installed in a straight line, install a single TrapBracket 2.0 or TD Bracket on each end of the roof at a measured, consistent distance from the bottom edge or ridge of the roof. Use a string line between the two brackets. Mount the remaining brackets along the string line, directly into the roof. Do not remove the EPDM rubber gasket; this is for weather-proofing.

## To Install TrapBracket™ 2.0 or TD Bracket™

1. The only surface preparation necessary is to simply wipe away excess oil and debris.
2. Secure the Bracket directly into the crown of the roof profile by driving fasteners into the four pre-punched holes, or pre-drilling the proper-sized hole through the four pre-punched holes and riveting with bulb-type rivets (as per rivet manufacturers installation instructions). To achieve tested holding strength, secure the bracket by using the tested fasteners in all four pre-punched hole locations (visit [www.s-5.com](http://www.s-5.com) for load test data and information on the tested fasteners). Drive the fastener in until it is tight and the washer is firmly seated. Do not over-drive fasteners; a slight extrusion of rubber around the washer is a good visual-tightness check. If a fastener has been over-driven, it is important to remove the fastener and replace it with a bulb rivet. To avoid stripping, use screw gun with depth-sensing nose piece or adjustable torque clutch.
3. From either end of the bracket, slide an M8-1.25 hex flange nut (flange side up) into the top groove. The bracket is now ready to install ancillaries, such as the S-5-PV Kit, using an M8 size bolt or threaded shaft through the 0.40" x 1.25" slotted top thru hole and the previously inserted hex flange nut.