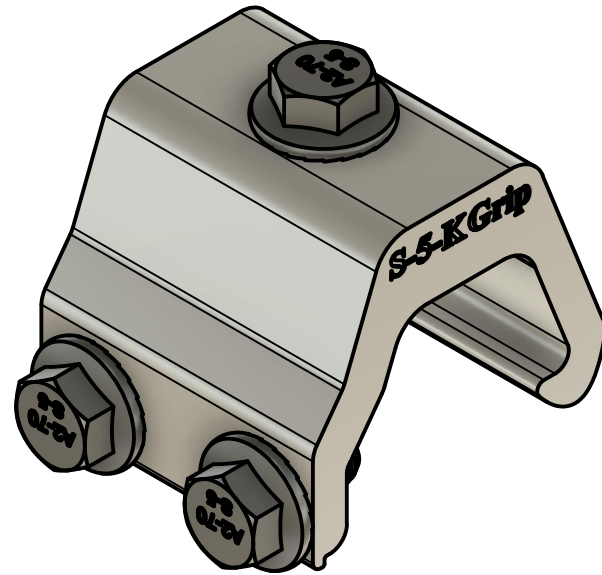
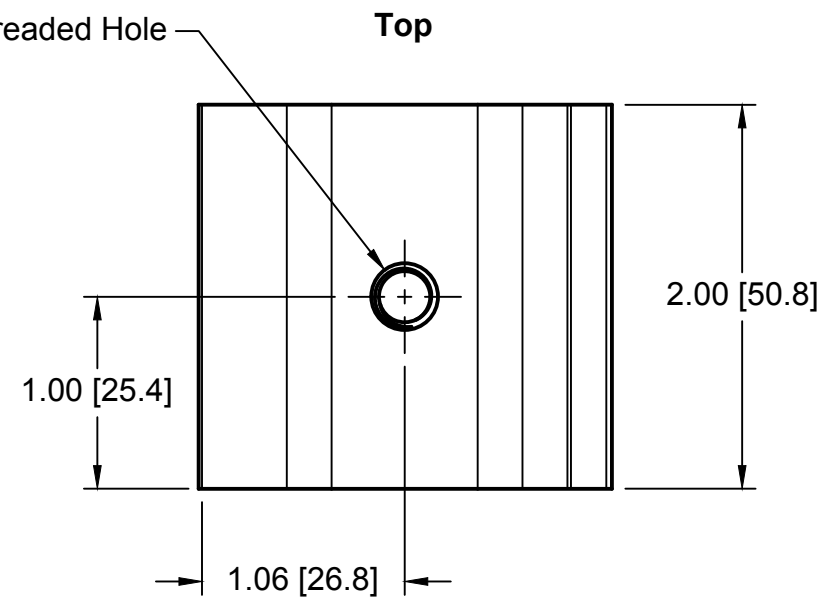


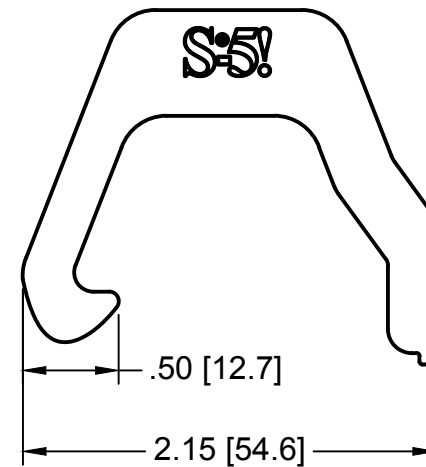
## S-5-K Grip



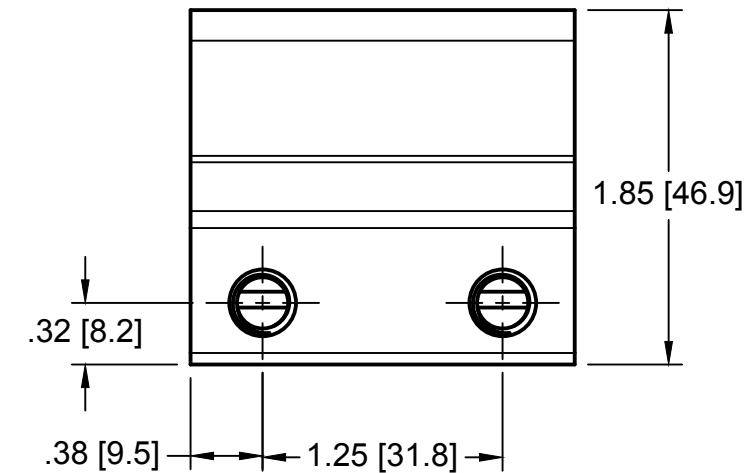
(3X) M8-1.25 Threaded Hole



**Back**

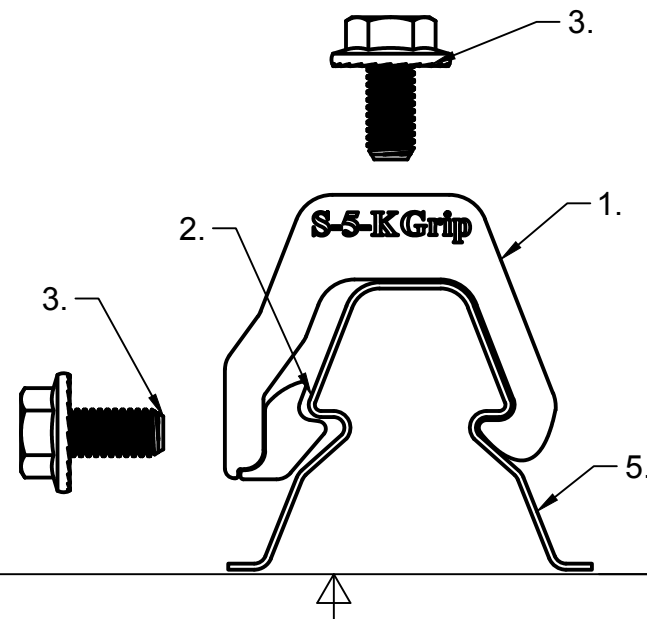


**Right**

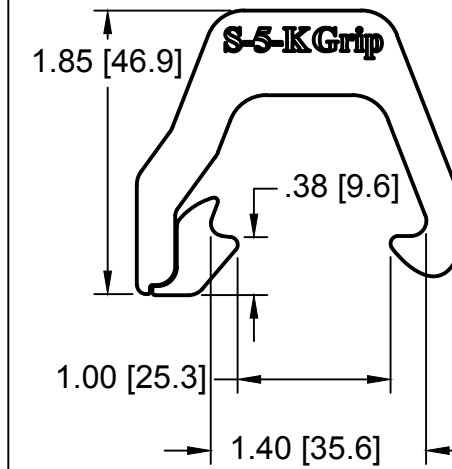


### General Notes:

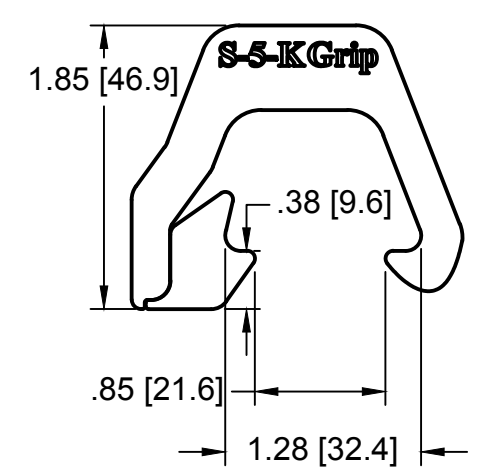
1. S-5-K Grip
2. S-5-K Grip GX 50 Insert
3. M8-1.25 16 mm Bolt
4. Example roof




S-5-K Grip with GX 50 insert



S-5-K Grip with GX 10 insert



MATERIAL:				METAL ROOF INNOVATIONS, LTD. 8750 WALKER RD COLORADO SPRINGS, CO 80908 719-495-0518 719-495-0045 (FAX)		
6000 Series AL						
EST ASSEMBLY WT:						
with GX10: 0.408 lbs, with GX50: 0.384 lbs						
HARDWARE:						
(x3) M8-1.25 16mm Bolt	TITLE S-5-K GRIP [CCD]					
	DRAWING NO. KG47-C-8-E		DRAWN BY SNLR		DATE 3/8/2022	
	SCALE 1:1	FILE NAME KG47-C-8-E (S-5-K Grip) [CCD]				
	S-5!® PRODUCTS ARE PROTECTED BY MULTIPLE U.S. AND FOREIGN PATENTS. VISIT OUR WEBSITE AT WWW.S-5.COM FOR COMPLETE INFORMATION ON PATENTS AND TRADEMARKS					