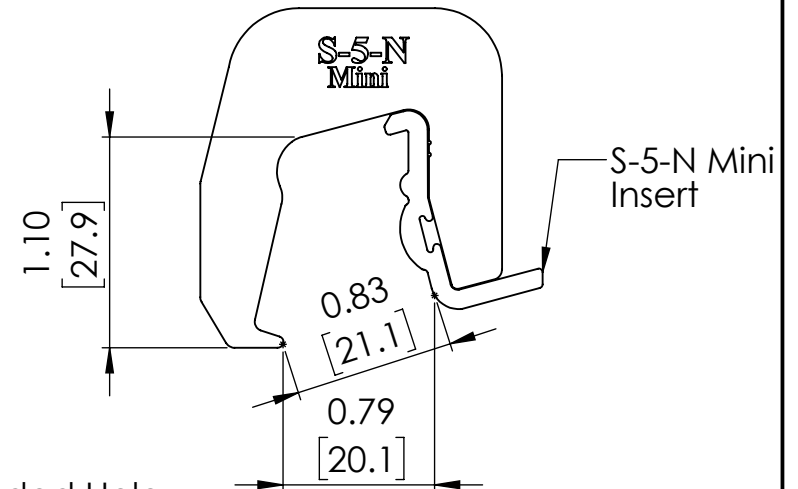
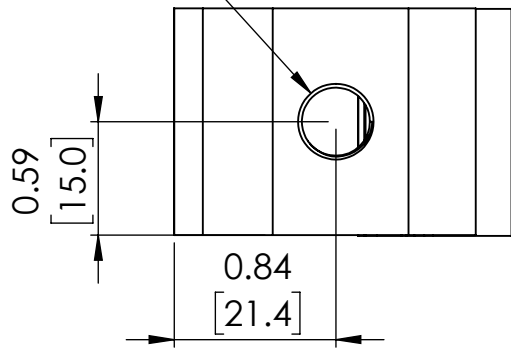
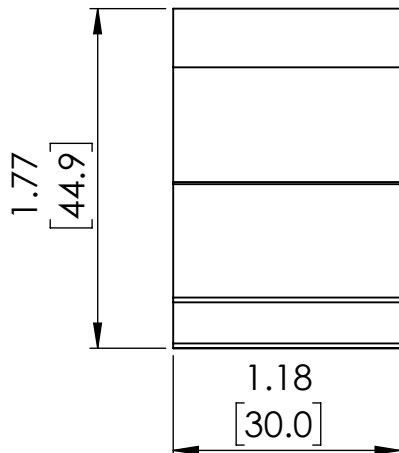


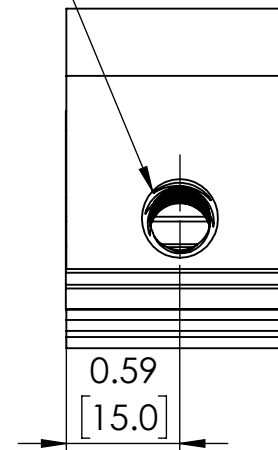
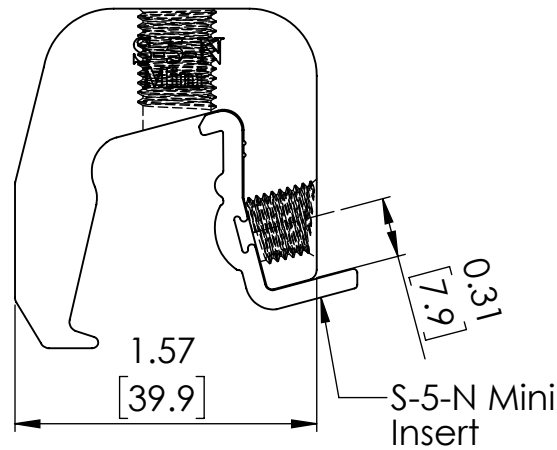
M8-1.25 Threaded Hole



3/8-24 Threaded Hole



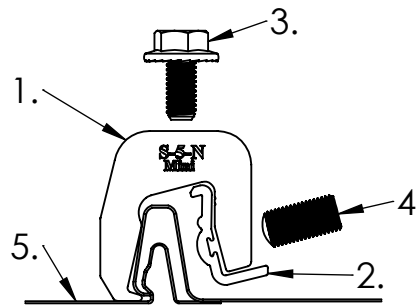
Units are in Inches with mm in brackets




**FOR STANDING SEAM SPECIFIC MECHANICAL LOAD TEST INFORMATION AND CLAMP INSTALLATION INFORMATION PLEASE VISIT: WWW.S-5.COM**

**General Notes:**

1. S-5-N Mini Clamp
2. S-5-N Mini Insert
3. M8-1.25 SS Hex Flange Bolt (13mm Socket)
4. 3/8-24 SS Round Point Setscrew (3/16 Hex Drive)
5. Example Roof



MATERIAL: 6061 T6			METAL ROOF INNOVATIONS, LTD. 8750 WALKER RD COLORADO SPRINGS, CO 80908 719-495-0518 719-495-0045(FAX)	
EST ASSEMBLY WEIGHT .2511 lbs				
SUPPLIED HARDWARE: M8-1.25 x 16 mm Bolt 3/8-24 x .800" Setscrews	TITLE S-5-N Mini CCD			
SCALE: 1:1	DRAWING NO. NG73-A-1-A	DRAWN BY JW	DATE 12/18/2018	
WEIGHTS: Clamp: .1788 lbs Insert: .0208 lbs Setscrew: 0.0170 lbs Bolt: 0.0345 lbs	S-5!® PRODUCTS ARE PROTECTED BY MULTIPLE U.S. PATENTS INCLUDING 5,228,248, 5,983,588 AND 6,164,033 (OTHERS ISSUED AND PENDING). EUROPEAN PATENTS ARE ALSO APPLIED FOR AND PENDING UNDER THE PATENT COOPERATION TREATY WITH DIVISIONAL FILING RIGHTS RETAINED. METAL ROOF INNOVATIONS, LTD. (LICENSOR OF S-5!® TECHNOLOGY) AGGRESSIVELY PROSECUTES PATENT INFRINGEMENT.			