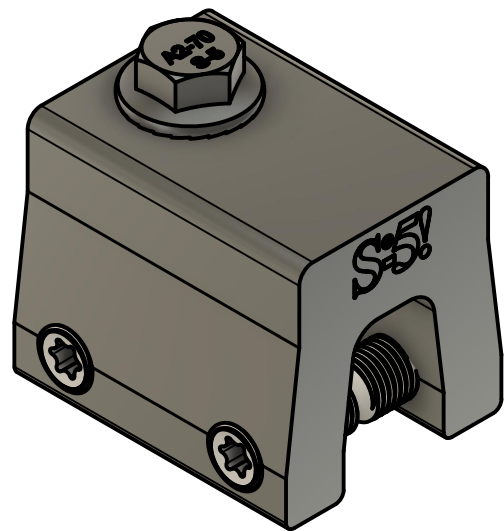
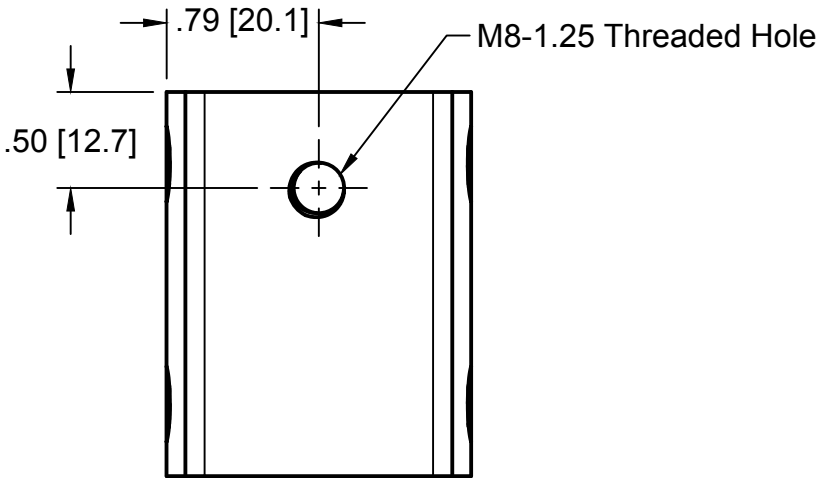


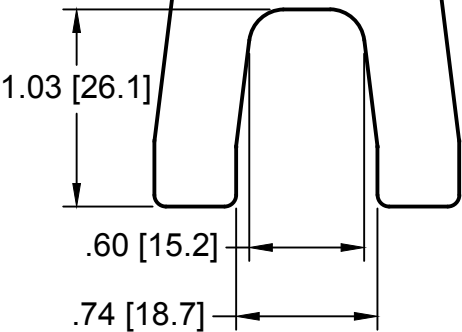
S-5-R465



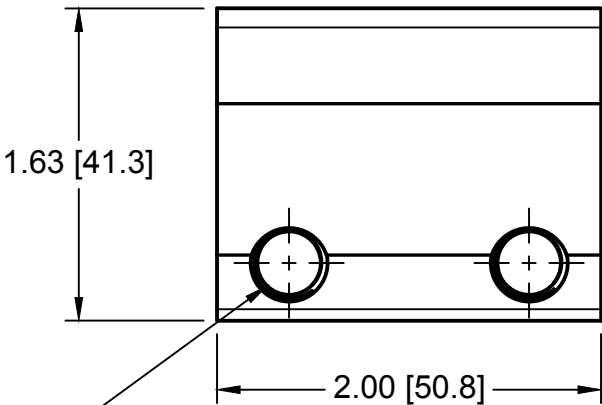
Top



S-5!

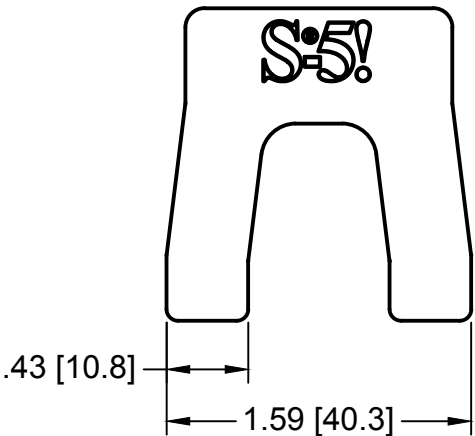


Left

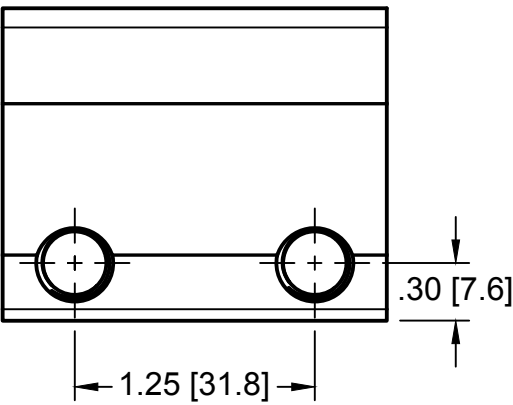


(4x) 3/8-24 Threaded Hole

Front

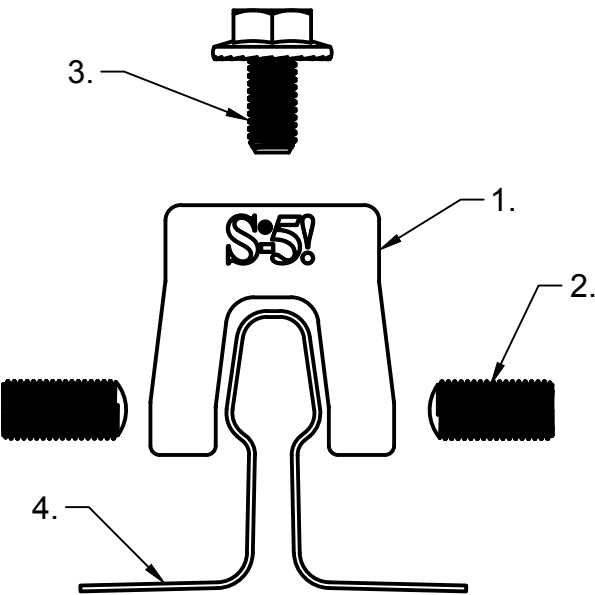



Right



General Notes:

1. S-5-R465
2. 0.9" 3/8-24 T30 Drive SetScrew
3. M8-1.25 16 mm Bolt
4. Example roof



MATERIAL: 6000 Series AL	 <b>METAL ROOF INNOVATIONS, LTD.</b> 8750 WALKER RD COLORADO SPRINGS, CO 80908 719-495-0518 719-495-0045 (FAX)		
EST ASSEMBLY WT: 0.395 lbs			
HARDWARE: (4x) 0.9" 3/8-24 T30 Drive SetScrew, M8-1.25 16 mm Bolt	TITLE S-5-R465		
	DRAWING NO. RR465-A-3-D	DRAWN BY SNLR	DATE 3/14/2022
	SCALE 1:1	FILE NAME RR465-A-3-D (S-5-R465) [FAB]	
	S-5!® PRODUCTS ARE PROTECTED BY MULTIPLE U.S. AND FOREIGN PATENTS. VISIT OUR WEBSITE AT WWW.S-5.COM FOR COMPLETE INFORMATION ON PATENTS AND TRADEMARKS		