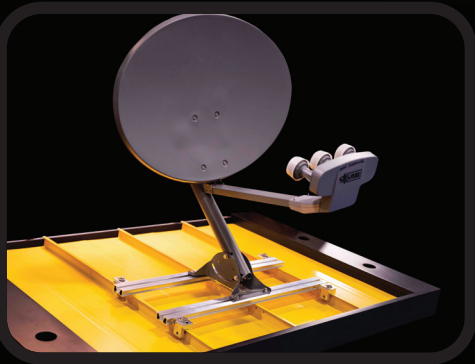


S-5!®

The Right Way

The right way to attach almost anything to metal roofs!



Satellite Dish



Junction Box



Conduit



HVAC

GRIPPERFIX®

Universal Mounting System

**Makes attaching almost anything
on metal roofs simple!**

- No penetration of standing seam roof
- No field-applied sealants needed
- Ease of installation
- Eliminates corrosion and rust
- Free flow of rainwater under struts
- No damage to roof system
- Compatible with S-5! CanDuit™ clamps for securement of piping/conduit

To build a long-lasting system, it is crucial to maintain roof warranties and avoid destructive corrosion. Improperly installing utilities on a metal roof can compromise both the equipment and the integrity of the roof itself.

Don't settle for temporary solutions like concrete blocks for ballast. Long-term solutions require durable attachment methods, and that's where GRIPPERFIX comes in. It is the perfect solution for installing HVAC, satellite dishes, light fixtures, security cameras, piping/conduit, service walkways and other rooftop utilities. Choose GRIPPERFIX and preserve the integrity of your metal roof.



888-825-3432 | www.S-5.com |

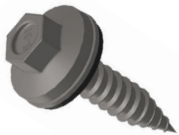
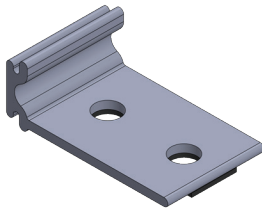
Exposed-Fastened Metal Roof



Securely attaches rooftop utilities to exposed-fastened roof while still allowing free flow of rainwater under the system. All you need is the *GRIPPERFIX* Strut, S-5! self-piercing fasteners and EF Tabs. M8 bolts in different lengths are available to use with the optional damper pad(s). The *GRIPPERFIX* Leveler allows for the leveling of rooftop utilities up to 5 degrees when needed.

EF Tab

Special design interlocks securely with strut
Factory-applied EPDM rubber gasket



Piercing Fastener

S-5! thread, stainless head and needle point design offers superior strength with no drilling;
EPDM gasketed screw together with EF Tab provides "double-seal" performance

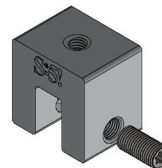
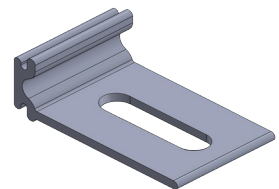
Standing Seam Metal Roof



GRIPPERFIX simplifies utility attachment without damaging your roof. For standing seam roof projects, all you need is the *GRIPPERFIX* Strut, S-5! non-penetrating clamps and CF Tabs. The *GRIPPERFIX* Leveler allows for the leveling of rooftop utilities up to 5 degrees when needed. Select the appropriate S-5! Mini clamp for specific roof profile.

CF Tab

Special design interlocks securely with strut
Slotted hole for adjustment



S-5! Mini Clamp

Select appropriate S-5! Mini clamp for specific roof profile

System Components

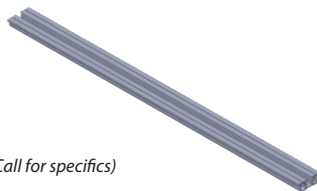
(All components sold separately)

GRIPPERFIX Strut

GF-27 (Satellite applications)

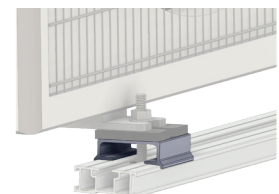
GF-52 (HVAC applications)

(Custom lengths available on quantity orders. Call for specifics)



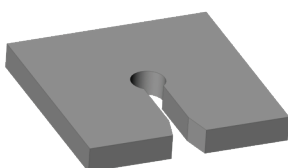
GRIPPERFIX Leveler

The *GRIPPERFIX* Leveler allows for the leveling of rooftop utilities up to 5 degrees when needed



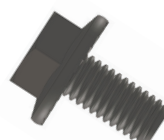
GRIPPERFIX Damper Pad

(HVAC applications)
Keyhole slot for insertion before, during or after assembly



M8 1.25 Bolt

17, 20, 40, 50, 60 mm stainless steel bolt available



M8 Hex Flange Nut



S-5!® Warning! Please use this product responsibly!

Products are protected by multiple U.S. and foreign patents. For published data regarding holding strength, fastener torque, patents, and trademarks, visit the S-5! website at www.S-5.com.

Copyright 2024 Metal Roof Innovations, Ltd. S-5! products are patent protected.
S-5! aggressively protects its patents, trademarks, and copyrights. Version US062824.

Distributed by