

S-5!®

The Right Way!

The right way to attach almost anything to metal roofs!

Installation Instructions

S-5!® Warning! Please use these products responsibly! Visit our website or contact your S-5! distributor for available load test results. The user and/or installer of these parts is responsible for all necessary engineering and design to ensure the S-5-FA has been properly spaced and configured.

Notice to S-5! users: Due to the many variables involved with specific panel products, climates, snow melt phenomena, and job particulars, the manufacturer cannot and does not express any opinions as to the suitability of any S-5! assembly for any specific application and assumes no liability with respect thereto. S-5! products are tested for ultimate holding strength on various profile types and materials. This information is available from the S-5! website: www.S-5.com. This document is an installation guide only and the photographs and drawings herein are for the purpose of illustrating installation, tools and techniques, not system designs. Information contained within is intended to apply to the document as a whole.

The S-5-FA (a flange adaptor for S-5! mini clamps) is a component of the S-5! Utility System.

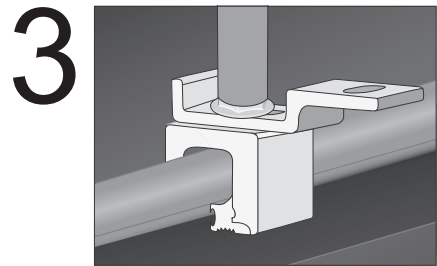
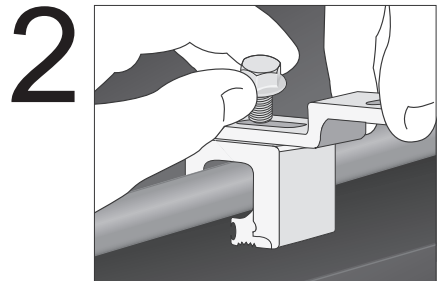
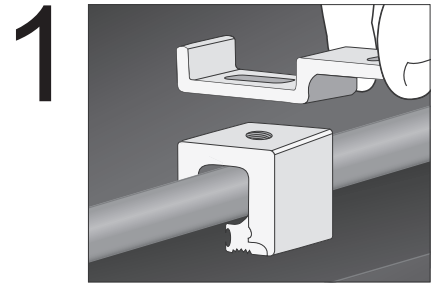
Tools Needed

- Dial-Calibrated Torque Wrench
(For accurate tension values, do NOT use a clicking torque wrench)

For time saving tool recommendations contact S-5!

To Install S-5-FA

1. Install the appropriate S-5! mini clamp according to the installation instructions included in the mini clamp's box.
2. Position the S-5-FA at the desired angle using the flanged M8 bolt provided with the mini clamp.
3. Tighten the bolt to 13 foot pounds. The wider slotted thru-hole in the flange is designed to accommodate fasteners up to 7/16" (M10).



S-5!® Warning! Please use this product responsibly!

Products are protected by multiple U.S. and foreign patents. Visit the website at www.S-5.com for complete information on patents and trademarks. For maximum holding strength, setscrews should be tensioned and re-tensioned as the seam material compresses. Clamp setscrew tension should be verified using a calibrated torque wrench between 160 and 180 inch pounds when used on 22ga steel, and between 130 and 150 inch pounds for all other metals and thinner gauges of steel. Consult the S-5! website at www.S-5.com for published data regarding holding strength.

Copyright 2014, Metal Roof Innovations, Ltd. S-5! products are patent protected. S-5! aggressively protects its patents, trademarks, and copyrights. Version 040914.

These instructions are for use by those experienced in the trade. Always follow appropriate safety precautions and use appropriate tools.

FAI-V1.0-0915