

Truck Driver Training Buyer's Guide

THE A-FLEET
Professional Safe Driver Course



LLLC
DEFENSIVE DRIVING

CDL
FINISHING SCHOOL



THE A-FLEET

Professional Safe Driver Course

The A-Fleet: Professional Safe Driver Course is a comprehensive training program designed for newly hired or experienced professional drivers.

The 8-week course provides self-directed, computer-based education, followed by closed course and behind-the-wheel training. The overall goal of the program is to improve safety behaviors and outcomes.



Learning Management System

The A-Fleet is easy to use and manage. With our complete learning management system you'll be assigning courses, tracking progress, documenting, and reporting on every course for every driver.

Total Number of Courses

44

Enrolled Courses

0

Completed Courses

Latest Badges



We're waiting for your first badge

Once you have achieved some badges they will be displayed here.

 [View Detailed Achievements](#)

Recent Activity

You were enrolled in course **09 A-Fleet: Adverse Conditions**

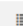
about 1 month ago



09 A-Fleet: Adverse Conditions

Not Started · Enrolled on 08 Jan 2019

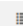
Driving conditions may become hazardous, but adverse conditions never can avoid accidents. In this module you will learn h ... [Read More](#)

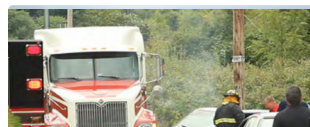
 1 Module



01 Safety Tune-Up: LLLC

In Progress · Last entered on 27 Nov 2018

 1 Module



02 Safety Tune-Up: Following Distance

Not Started · Enrolled on 08 May 2018

Course List

These courses are used as the foundation of LLLC Certification and can also be used for preventative campaigns and remedial training outside of the certification process.

The A-Fleet

Avg. run time: 25 Minutes

- Understanding Safety and Risk
- Pre-Trip Inspections
- LLLC™ Defensive Driving
- Following Distance
- Backing Basics
- Intersections
- Changing Lanes, Merging and Passing
- Railroad Crossings
- Adverse Conditions
- Human Factors and Fatigue
- Emergency Procedures
- Large Vehicle Dynamics
- Load Securement
- Injury Prevention
- CSA
- Federal Regulations

Instructor Certification: Online Courses

- Learning for Adults
- Coaching the Adult Learner

Driver Certification: Classroom Courses

- Understanding Safety and Risk
- LLLC For Drivers

Safety Tune-Ups

Avg. run time: 5 Minutes

- Drop Hook & Landing Gear
- Pre Trips
- Communicate
- Look Around
- Injury Prevention
- Blind Spot Management
- Situational Awareness
- Night Driving
- Animal Collisions
- Tail Swing
- Leave Room
- Dangers of Turns
- Jackknife & Rollover
- Intersections
- Seatbelts
- Fatigue
- Look Ahead
- GOAL
- Speeding
- Adverse Weather Condition
- Changing Lanes
- Misconduct
- Seats and Mirrors
- Distracted Driving
- Following Distance
- LLLC



LLLC Instructor and Driver Certification is a train-the-trainer model based on our world-class defensive driving system, LLLC.

LLLC uses the concepts of Look Ahead, Look Around, Leave Room and Communicate to effectively decrease accidents, injuries and claims by creating a safety culture that permeates through your fleet.

Look Ahead ▷
Look Around ↻
Leave Room ▬
Communicate ≡

LLLC Process



Become a LLLC Certified Instructor

Complete and pass:

- 8 self-directed online courses
- 3-hour classroom workshop
- 3-hour Behind-The-Wheel commentary driving



Create LLLC Certified Drivers

Your drivers complete and pass:

- 6 self-directed online courses
- 1-hour classroom workshop
- 1-hour Behind-The-Wheel commentary driving

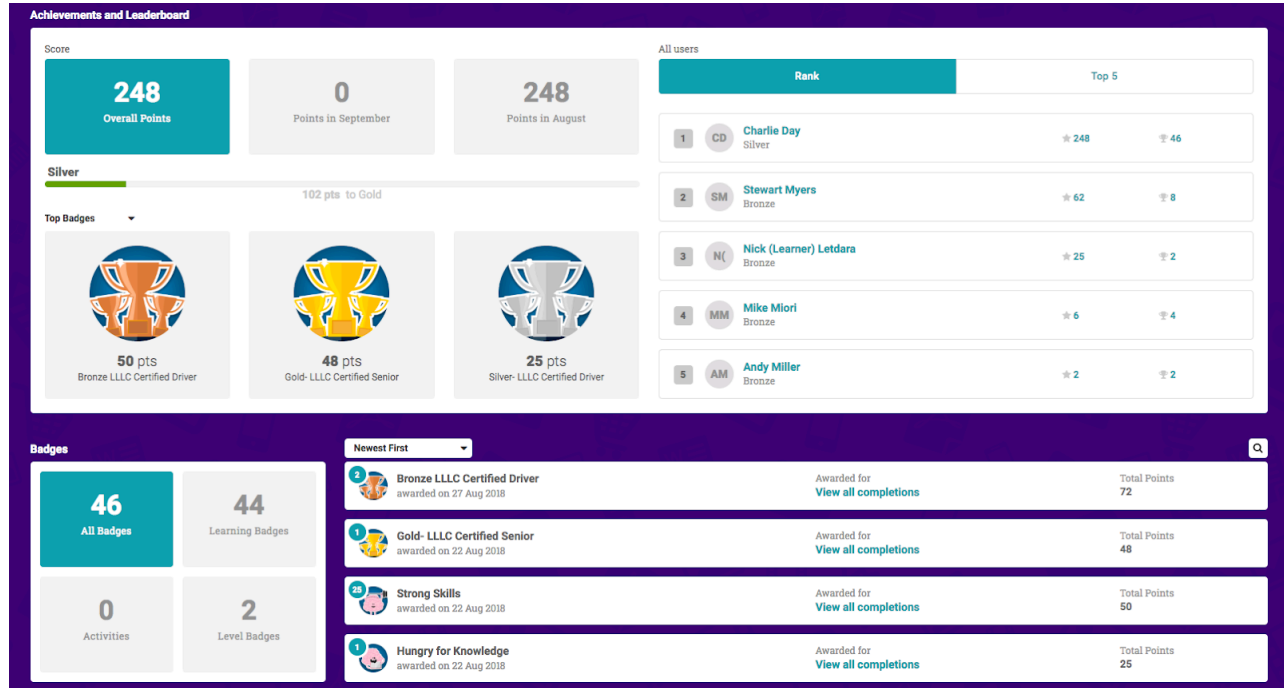


Recertification

LLLC Instructor and Driver Certification is valid for two years, regardless if you switch companies. Recertification builds on the concepts you already put into practice and advances your skills.

Driver Scoreboard

Get your drivers excited about LLLC Driver Certification by using our scoring system to create competition amongst your fleet.



LLLC Marketplace

Reward your drivers with LLLC gear from the LLLC Marketplace. Drivers can earn items such as hats, gloves, jackets or thumper for completing courses.

Visit www.lllc-marketplace.avatarfleet.com for more information.





Program Overview

The average age of an Over-the-Road truck driver is 55. If you want to have a trucking company in five years, you need a plan to safely and effectively hire and train recent CDL graduates.

Our **CDL Finishing School** program is designed to provide a structure and documented process for your green drivers. Regardless of the trainer, you'll know the content, delivery and documentation will be the same high level of effectiveness.

CDL Finishing School effectively trains and develops recent CDL graduates into safe professional truck drivers, providing a consistent process and documentation.

CDL Finishing School builds on our online driver training and our train-the-trainer program, LLLC Instructor Certification. All of your trainers must be LLLC Certified Instructors to execute the program.

Process



Online Learning

CDL Finishing School Trainees start with the A-Fleet: Professional Safe Driver Course - 16 modules of online driver training courses



Classroom

Review concepts covered in the online portion and prepare for the closed course



Closed Course

Trainees demonstrate their Behind-The-Wheel skills in controlled environment before proving they're ready for the road



Live Loads

A LLLC Certified Instructor models the proper behaviors Behind-The-Wheel and then coaches from the passenger seat using our LLLC Instructor principles and Performance Standards

Getting Started

Contact your insurance company and send them our syllabus and tracking materials

Determine the number of Driver Trainers you need and put them through the Finishing School Instructor Certification process

Begin recruiting at schools!

Materials

Online Learning

- Professional Safe Driver Course - 16 modules of online driver training courses
- LLLC Instructor - individual and classroom courses
- How to Implement CDL Finishing School

Syllabus

- Candidates will complete an eight-week syllabus detailing every hour of the program

Guide Books

- Trainee Study Guide – Mirror content of Instructor Guide designed as reference materials for trainees
- Instructor Guide – Consistent documented training process for LLLC Certified Instructors to follow

Performance Standards

- Skills-development based on 24 Explicit Performance Standards such as Truck Inspection, Following Distance and Backing

Documentation

- Daily documentation to track and report on progress, a final knowledge exam and final driving evaluation



Schedule Your Demo Today



888-758-4842



info@avatarfleet.com



avatarfleet.com

AVATARFLEET