

# PDP SERIES®

POSITIVE DISPLACEMENT PUMP  
AUTOMATION MADE SIMPLE



## REDUCE YOUR COST AND EXTEND THE LIFE OF YOUR PUMPS

Positive Displacement Pumps have been used in oil and gas applications for years, from saltwater disposal to Hydraulic Lift. These pumps are stable and proven technology.

When running without a variable frequency drive, however, PD pump operators are needlessly wasting money and hampering their own productivity. We designed the PDP Series drive to increase the efficiency of your pumping system, while lowering your costs.

In most disposal systems, the pump runs at high speeds, then turns off at predetermined levels. Running this way causes excessive stop-start cycles, premature wear and needless increases in your energy bill. In a typical flood or hydraulic lift application, the pump is set to run faster than necessary to create more pressure than needed. The excess pressure is then choked down at the bypass valve to fit the application.

With the PDP Series drive, you run at the exact speed you need to generate the required pressure to the well, saving you electrical costs, while reducing maintenance and down time on your pump and bypass valve. The PDP Series drive is set up for either pressure, flow, or tank level control, making startup programming simple and covering all your applications. It includes all the required interfaces to protect your pump.

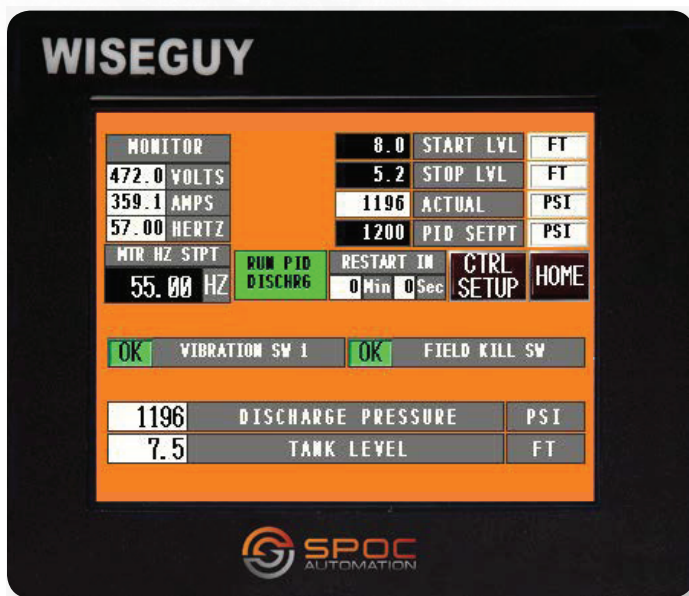
- Save as much as **25% on energy costs** and see a payback for the drive in as little as 9-12 months
- Reduce pump operating RPM, extending pump service life
- Most economical way to operate pump at setpoint pressure
- Comprehensive feature set and oilfield ready construction
- Simple setup and operation

## PROVIDE HISTORICAL AND PRODUCTION DATA

- Trending and run history
- Data logging with USB expandable memory
- Monitored pressures
- Single touch USB download
- SCADA-ready product

## COLOR CODED FIELD DEVICE STATUS MAKES TROUBLESHOOTING EFFORTLESS

- Fault indications
- Customer configurable
- Date and time stamped



The WiseGuy interface allows control of a wide range of features all from one easy-to-use touch screen.

## TECHNICAL DATA SPECIFICATIONS

HP Range	5-1000HP
Input Range 380 – 500 VAC***	Standard
Output: AC Volts maximum	Std: Input Voltage Base AFE: Input Voltage x 1.2 Max
Output Frequency Range: Hz Overload: 1 Minute (CT)	0 – 320 Hz
NEMA 3R, Harsh Environment Enclosure	Standard with Sun Shield & Heat Exhaust System
Cold Weather Heater & Thermo Switch	Standard
Extreme Cold Weather Heat Kit	Optional
Listings Available	UL, cUL Optional
WiseGuy Color Touch Screen Operator Interface	Standard
Communications	Modbus RTU, TCP Standard, others available
Altitude (Maximum without De-Rate)	3300 ft. (1000m)
Line Voltage Variation	+10/-15% Standard, +10/-20% AFE Option
Efficiency	>97%
Power Factor (Displacement)	.98
Digital Inputs	10 Programmable
Analog Inputs	4 Programmable

\*\*\* Other voltages available, please consult SPOC.

For more information, contact us at 205.661.3642  
or visit us online at [spocautomation.com](http://spocautomation.com)

## REDUCE YOUR PUMP MAINTENANCE

- Wider fluid volume range than any fixed-speed system
- Dedicated controls cabinet with no high voltage exposure reduces down time and increases safety
- State-of-the-art cooling with isolated intake and exhaust

## PRE-CONFIGURED CONTROL AND PROTECTION MAKE OPERATION SIMPLE

- Automatic Pump Speed Adjustment optimizes discharge pressure or tank level
- Hi/Lo Suction Pressure inputs
- Hi/Lo Discharge Pressure inputs
- Hi/Lo Gear Reducer Oil inputs
- Hi/Lo Triplex Oil inputs
- Two User Configurable Inputs
- One Configurable analog input for flow or inlet pressure

## INDUSTRY'S WIDEST RANGE OF DRIVES

- 5-1000HP+ available
- 240V, 480V, 600V low voltage motors
- Single phase input power options available
- Low harmonic input solutions

## PACKAGED FOR OIL & GAS INDUSTRY

- Engineered harsh duty drive enclosures
- Standard sun shields and direct exhaust system reduces cabinet temperature and reduces dust
- Artic to desert packaging
- Power voltage surge protection
- Best practices on controls and protection

## RELIABLE, DEPENDABLE, LATEST DRIVE TECHNOLOGY

- Two-year manufacturer's warranty
- Fifth generation drive technology
- Advanced drive manufacturing process

The PDP Series drive includes all required automation equipment, eliminating external PLC and SCADA systems. It links directly with your field signals and is fully compatible with Well Optix, our remote monitoring system as well as other systems. Everything is assembled and tested before it ships to the field, so you have no need for additional installation and start-up expenses with multiple vendors.

