

CruzLog Management Solution

Log & Telemetry Management and Analytics in a modern data center

Holistic visibility to data center health from bare metal through virtual functions

Consolidated visibility and processing of event, log and telemetry metrics.

Real time log alarm generation and management

Manage log volumes by selective capture and automated data retention policies.

Automated Device log deployment and ongoing management

Automate recurring operations and closed-loop error remedies

THE NEW VALUE OF LOGS

Logs are quickly becoming a key performance monitoring tool in modern data centers. Traditional log and metric management techniques combined with new and more efficient collection methods provide a comprehensive set of metrics for both application and network performance. New model-driven telemetry processes stream data from network devices continuously while optimizing data flow. While these approaches provide near real-time access to operational statistics and optimize the efficiencies and proliferation of log-based management, the varied log methods require integrated collection, analytics, and automation to manage data correlation, visualization, frequency of collection and data retention.

MANAGE AND ANALYZE LOGS FOR CISCO, OS10 and SONIC

CruzLog collects, stores, and visualizes log and telemetry data for Cisco, OS10, Sonic, and numerous other processes to significantly reduce time-to-deploy and operating costs. CruzLog lets administrators select devices, specify KPIs, automate deployment of log configurations, tune them for content and collection frequency, and manage data retention for each managed resource. You can also filter log data and create real-time events for more reactive support processes.

CruzLog adds to **Cruz Operations Center's (CruzOC)** multi-vendor, multi-technology infrastructure management for an integrated management platform for your IT deployments, whether they are traditional data center or distributed edge. CruzLog's dynamic analysis tools, integrated alarm processing, and automation, lets administrators collect filters and visualize the relevant infrastructure and process metrics for your data center. With seamless integration with CruzOC, support staff can see event, performance, and log data in a consolidated view, and together, they provide a single console management product for managing operations of today's converging infrastructures.

CRUZLOG KEY FEATURES

- Collect logs from wide variety of sources and formats
- Manage multiple log and file formats (Syslog, File, CSV, Packet, etc)
- Manage new buffered telemetry formats (GPB)
- Automatic deployment of log management processes
- Control filtering and frequency of log collection
- Create alarms from log data for near real time correlation and management
- Intelligent dashboards to dynamically analyze data
- Supports offline data archiving



Data Center Master Dashboard

SIMPLE ANALYTIC VISUALIZATION AND NAVIGATION OF DATA CENTER LOG INFORMATION

The *Data Center Dashboard* provides a consistent view of key metrics for each managed component allowing quick recognition of current or potential support issues. The dashboard lets the support staff quickly drill down for more details for each managed resource.

Visualization: Component managed, current significant alarms levels for component type, and alarm activity by top five effected managed components.

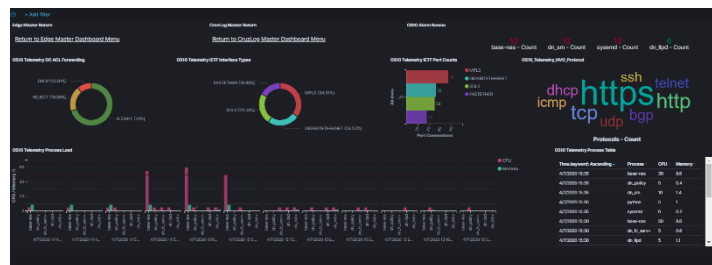
Collects telemetry data from compressed formats such as Google Protocol Buffers.

Dynamic visualization for real-time analytic filtering

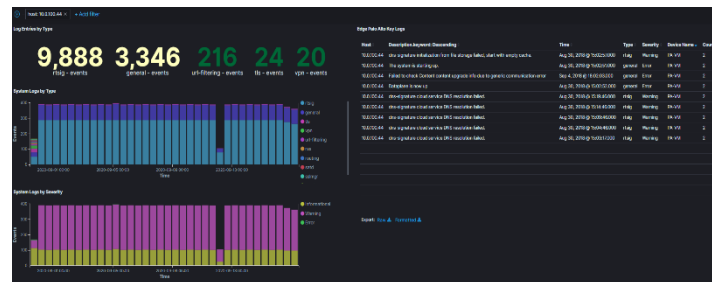
Click on current visualized object to isolate focus on that object.

Create a filter for description and select from pull down.

Manage existing filters to enable or disable; inverse or delete.



OS10 Telemetry Visualization



Cisco Switch Syslog Visualization

CRUZLOG EXHANCED AUTOMATION AND MONITORING

Single pane-of-glass

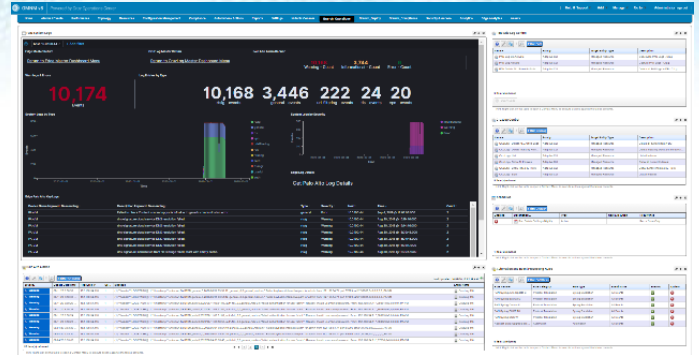
- Authorization and security features
- Automation processes

Analyze incoming logs against specified criteria and forwards log metrics for immediate visibility, management and/or automated corrective measures.

Shares, utilize and performance metrics

User Automated Actions

- Initial deploy and actively change collection filters for managed log resources.
- View and manage log data storage and retention properties.



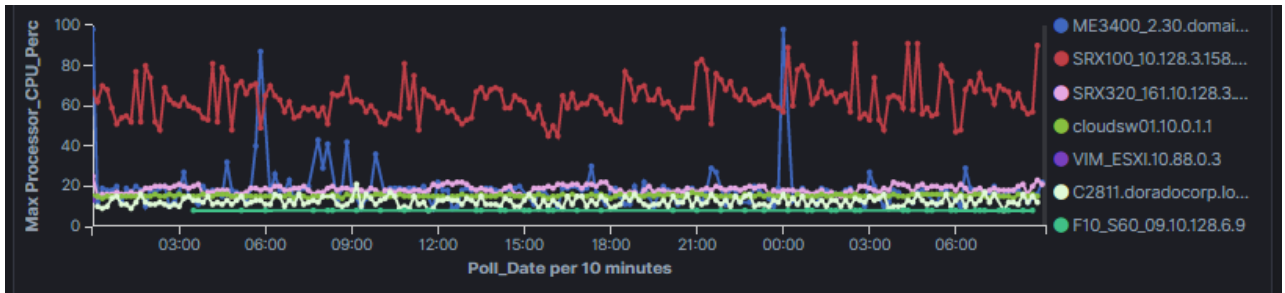
Palo Alto Console Page and Portlets

Log Alerts

Severity	Date Opened	Entity Name	Resource IP	Event Name	Count	Message
Critical	03/04/20 1:01:15 AM	CruzLog 116	192.168.54.116	syslogNotification	16	(1) Palo Alto S...
Major	08/23/19 8:00:05 PM	CruzLog 116	192.168.54.116	syslogNotification	1990	(1) Palo Alto S...
Major	12/12/19 12:53:59 PM	CruzLog 126	192.168.53.126	syslogNotification	246	(1) Palo Alto S...
Minor	08/24/19 12:12:25 AM	CruzLog 116	192.168.54.116	syslogNotification	586	(1) Palo Alto S...
Warning	08/18/20 3:53:31 AM	CruzLog 116	192.168.54.116	syslogNotification	1	(1) **header**...
Warning	08/18/20 3:53:31 AM	CruzLog 116	192.168.54.116	syslogNotification	1	(1) **header**...

87 item(s) returned

Log Alerts



CruzOC Managed Resource CPU Processor Visualization

Managed Log Controls

Name	Description
Azure Disable PS01 NSG Log	Turn Network Watcher off for this VM - CxLg
Azure Disable PS02 NSG Log	Turn Network Watcher off for this VM - CxLg
Azure Enable PS01 NSG Log	Turn Network Watcher on for this VM - CxLg
Azure Enable PS02 NSG Log	Turn Network Watcher on for this VM - CxLg
ESX-VMHost-Disable Syslog	PowerCLI - Disable Syslog collection by CruzLog -- CxLg
ESX-VMHost-Enable Syslog	PowerCLI - Enable Syslog collection by CruzLog - CxLg

18 item(s) returned

Managed Device Log Control Actions

Manage CruzLog

Name	Family	Target Entity Type	Description
CruzLog - Delete ALL Active ...	Adaptive CLI	Managed Resource	Delete all current logs in DB
CruzLog - Delete Index by P...	Adaptive CLI	Managed Resource	Delete index by prefix and by da...
CruzLog - List	Adaptive CLI	Managed Resource	List all indexes
CruzLog - Show All Indexes	Adaptive CLI	Managed Resource	Show all current indexes
CruzLog - Show Index by Pr...	Adaptive CLI	Managed Resource	Show current indexes by Prefix
CruzLog - Size	Adaptive CLI	Managed Resource	List all indexes

6 item(s) returned

CruzLog Management Actions

TECHNICAL SPECIFICATIONS

Data Center Infrastructure Support Examples

- Public Data Center
- Enterprise Private Data Center
- Distributed Data Center
- Virtual Edge Deployments

Comprehensive Multi-tech/ Multi-vendor Support

- **Technology Examples:** Networking, Wireless, Storage, SD-WAN, Servers, Hyper Visors, Clients, Hyper Converged, Backup
- **Log Formats:** Syslog, File (CSV, Text), Packets, Telemetry (GPB)
- **Vendor Examples:** Cisco, Ruckus, Aerohive, Dell, Brocade, Juniper, Netgear, Extreme, Foundry, HPE, F5, Sonicwall, Sonus, Aperi, Avaya, Lenovo, Ericsson, Siemens, Enterasys, Nortel, Alcatel, 3Com and many more.
- **For more details and a complete device listing, contact sales@doradosoftware.com**

Supported Web Browsers

- Chrome
- Safari
- Firefox
- Internet Explorer

Deployment Options

- Supports single server and high availability deployments

Trials, Pricing, Options

- Free 30-day trial
www.doradosoftware.com
- Low-risk, affordable subscription-based options in 1/3/5-year terms
- Scales from 25 devices to unlimited

Demos, Quotes, Purchase

- Dell Technologies Representative, Reseller or
sales@doradosoftware.com

Supported Operating Systems

- Microsoft Windows Server
- Linux for Redhat and CentOS
- Virtual Appliance

About Dorado Software

Dorado Software, Inc. is a leading provider of integrated resource management, performance monitoring, and service orchestration software to automate cloud operations across converged infrastructure fabrics. Dorado helps IT professionals to monitor, configure, and manage converged infrastructures (physical and virtual storage, servers, networking, applications), virtualized network functions and cloud services.
www.doradosoftware.com.

