

Citizen Network
FOR A WORLD WHERE EVERYONE MATTERS

Community as innovation

COVID-19 | Inclusion | Isolation | Exclusion

Simon Duffy | 25th June 2020

Our problem is **not** that disabled people are **excluded** from community. Our problem is that our communities do not function as **communities**. Our problem is that we do not act like **citizens**.

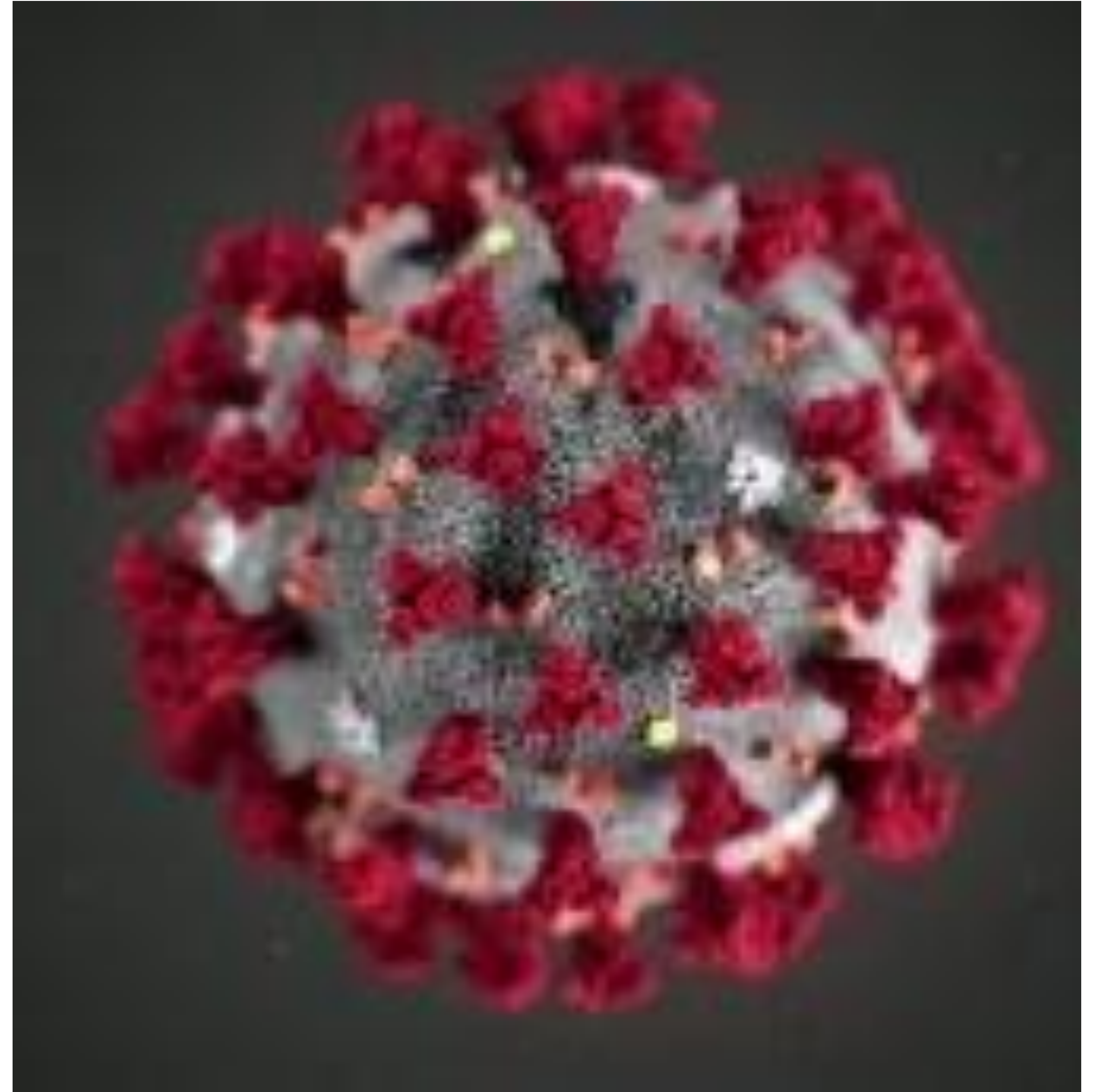
Main points

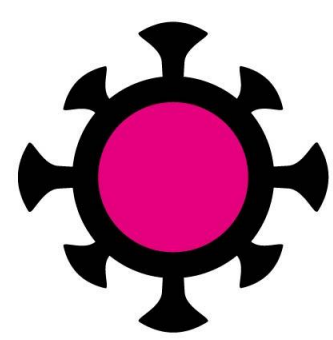
What I will talk about

1. Lessons from the COVID-19 response
2. Lessons from deinstitutionalisation
3. Lessons from peer support
4. Exploring neighbourhood democracy

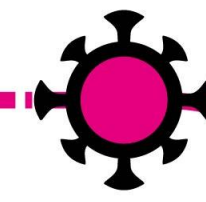
1. COVID-19

A revealing crisis

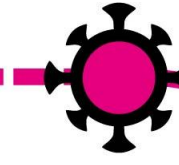




Community: the first line of defence



Services: the second line of defence



Healthcare: the last line of defence



Homes & Communities

230,000 Homes

1 : 10

23,000 Blocks

1 : 3

7,000 Streets

1 : 5



3. Every street or block has at least one champion

1,500 Neighbourhoods

1 : 10

142 Communities

1 : 5

28 Wards

1 : 28

City of 600,000 citizens



Citizens & Communities

1. Everyone knows how to stay safe

2. Every home is connected to two or more others

4. Every street is connected into the network

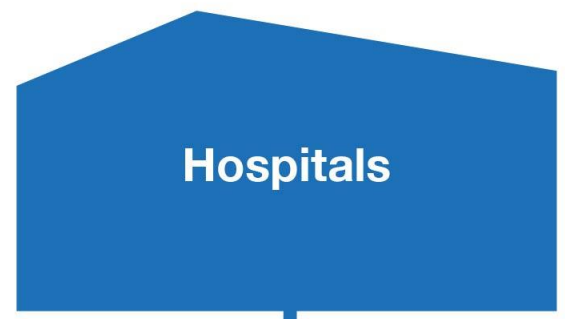
5. Volunteering starts in our own neighbourhoods

6. Citizens & organisations are trusted and secured

7. Clear & empowered central co-ordination



Locked Down



Facing the COVID19 Threat Upstream

Data on homes and citizens from Sheffield, UK

June 22, 2020

SHA COVID-19 Blog 15

by Jean Smith

We are now into the 15th weekly blog during the pandemic and confidence in the government is plummeting as the weeks roll on. The UK stands out as the **sick man of Europe** according to the Economist with the highest excess deaths per million population and with the OECD forecasting the UK as having the highest % decrease in GDP for 2020 compared to a year ago

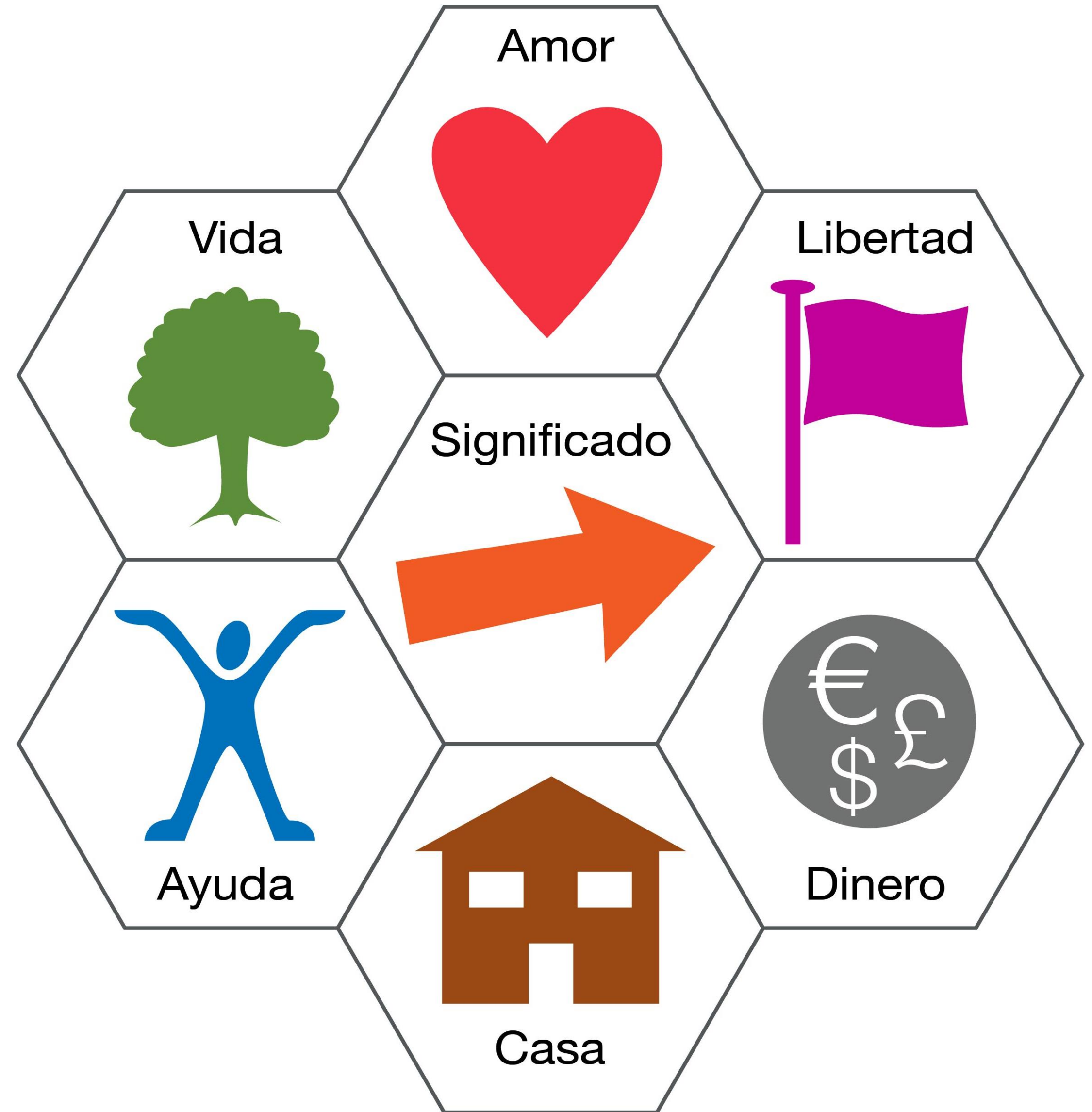
The response to COVID-19 in the UK

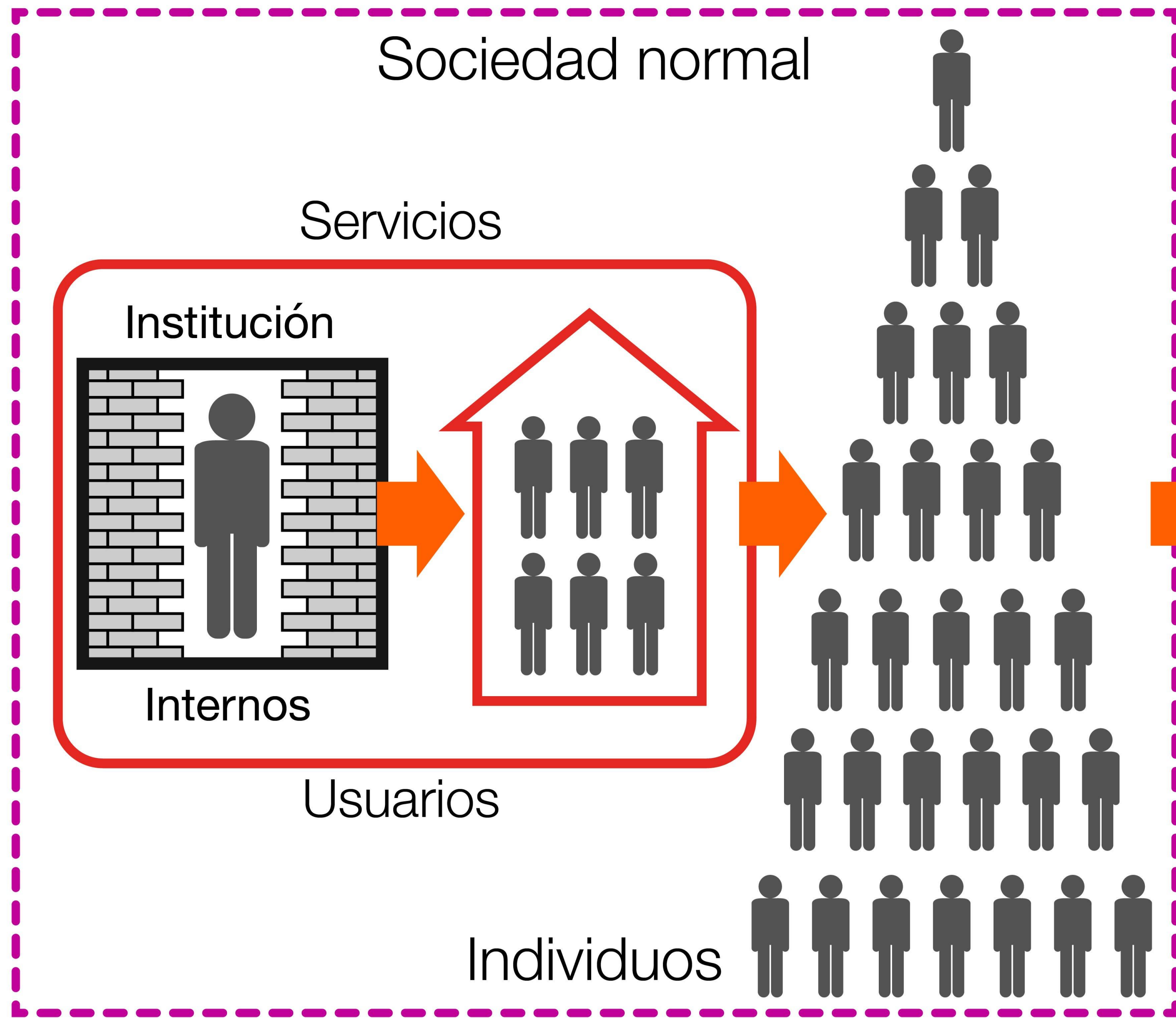
Some provisional judgement

- At 18th June 15,507 care homes have had an outbreak of COVID-19. Shielding did not work and many people were discharged unsafely from hospital. Some care homes received requests to have residents sign 'Do Not Resuscitate' agreements.
- Some people left care homes to be safer with family. People with self-directed support were able to adapt. People, families and staff often improvised solutions. Funders were forced to trust people to make sensible decisions.
- Many communities quickly developed self-organising support, often using Facebook and WhatsApp.
- Central government failed to delegate testing and public health functions to local government and has made serious procurement errors with tests, protective equipment and App development. National volunteering system also failed.

2. Inclusion

Person-centred strategies
for connecting to community

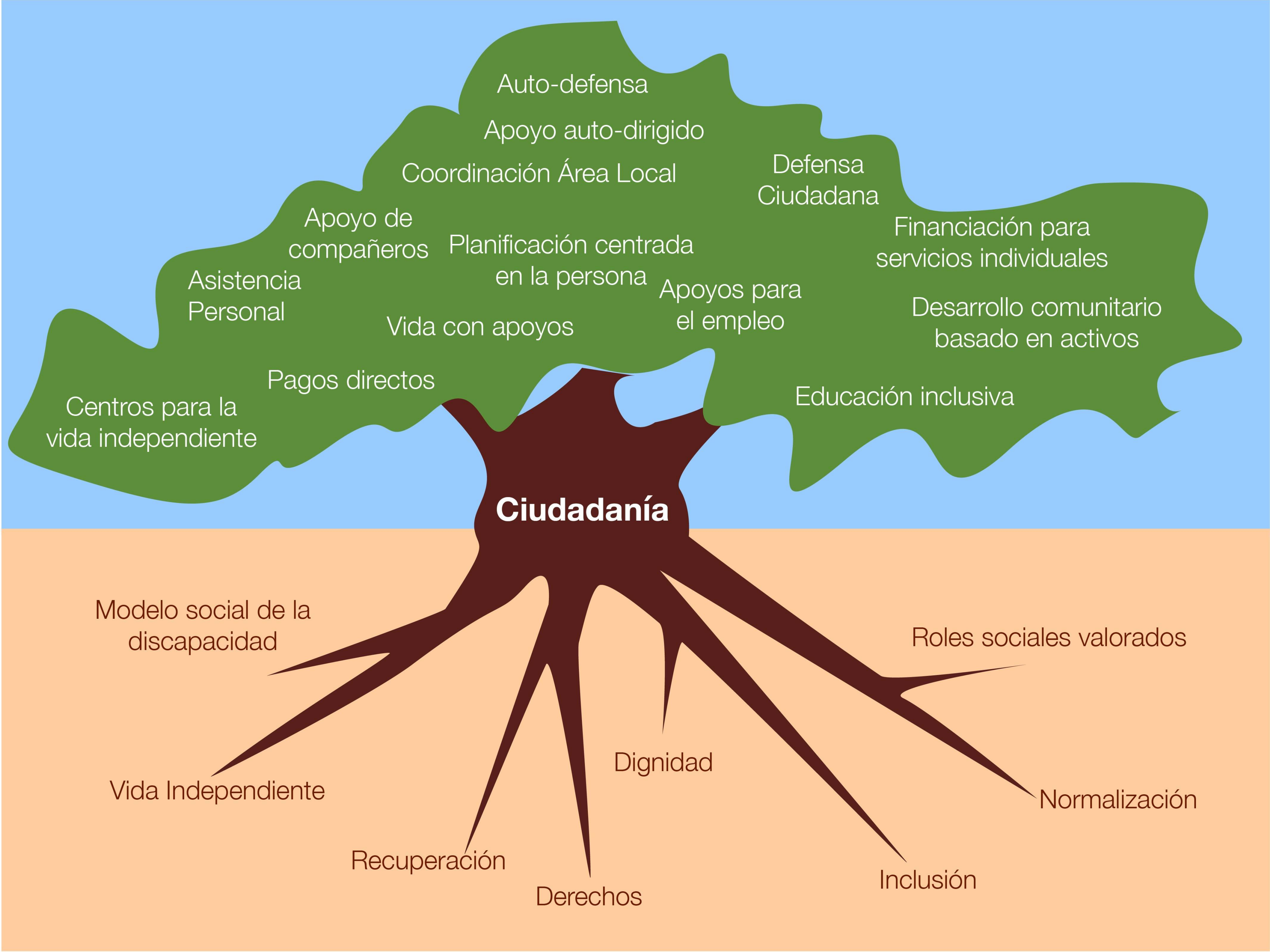




Comunidades diversas



Un mundo de ciudadanos



Ciudadanía

Auto-defensa

Apoyo auto-dirigido

Coordinación Área Local

Defensa Ciudadana

Financiación para servicios individuales

Desarrollo comunitario basado en activos

Educación inclusiva

Apoyos para el empleo

Planificación centrada en la persona

Vida con apoyos

Asistencia Personal

Apoyo de compañeros

Pagos directos

Centros para la vida independiente

Modelo social de la discapacidad

Vida Independiente

Recuperación

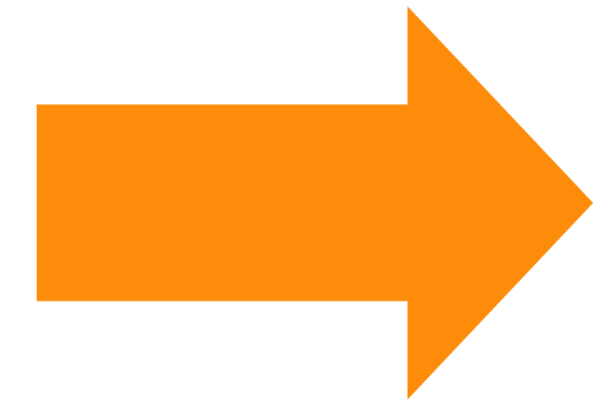
Derechos

Dignidad

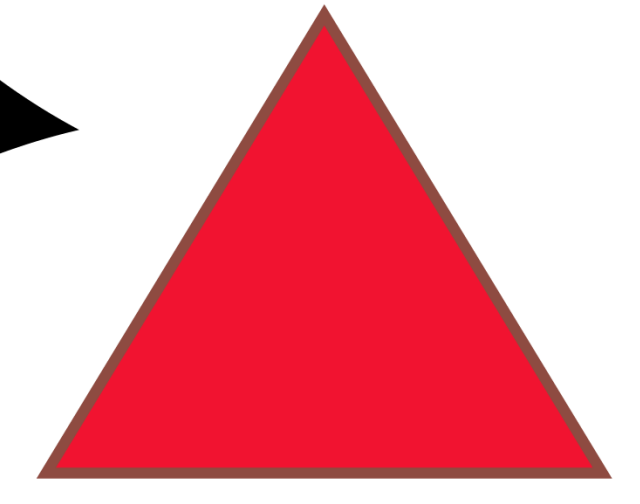
Inclusión

Roles sociales valorados

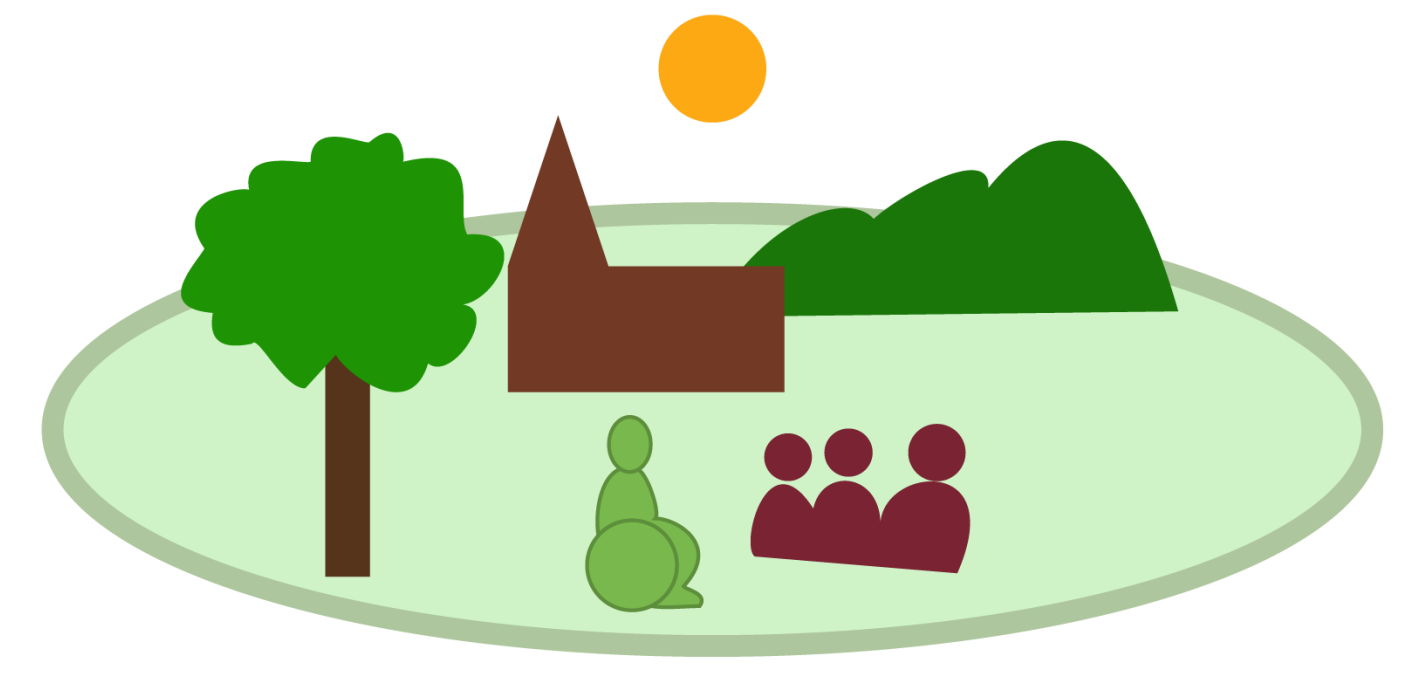
Normalización



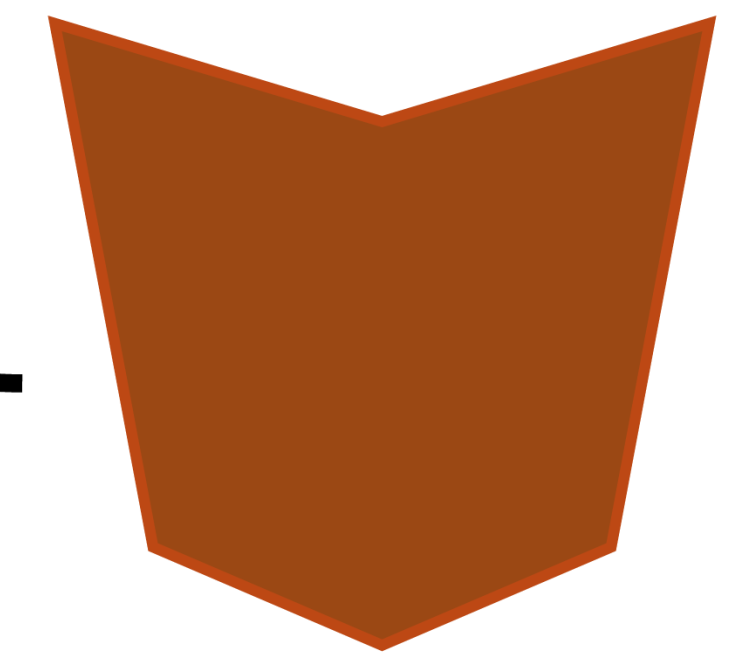
1. Discover gifts & interests



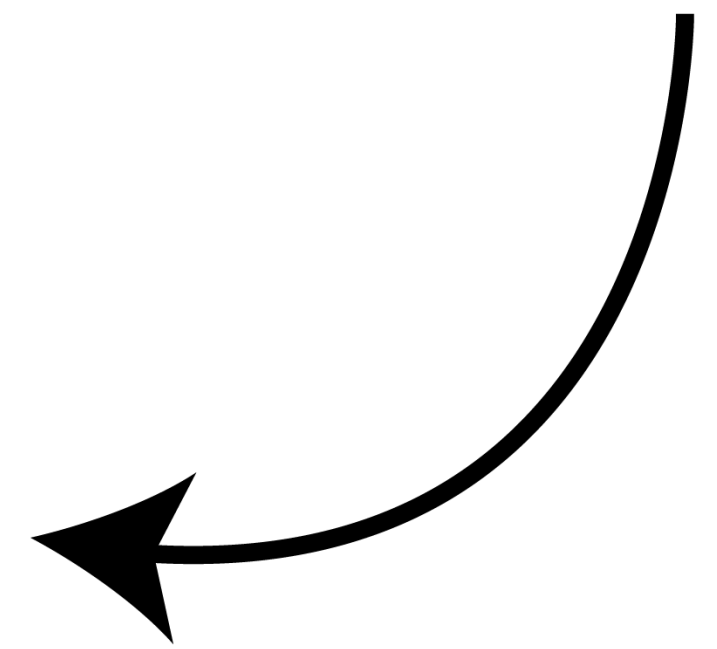
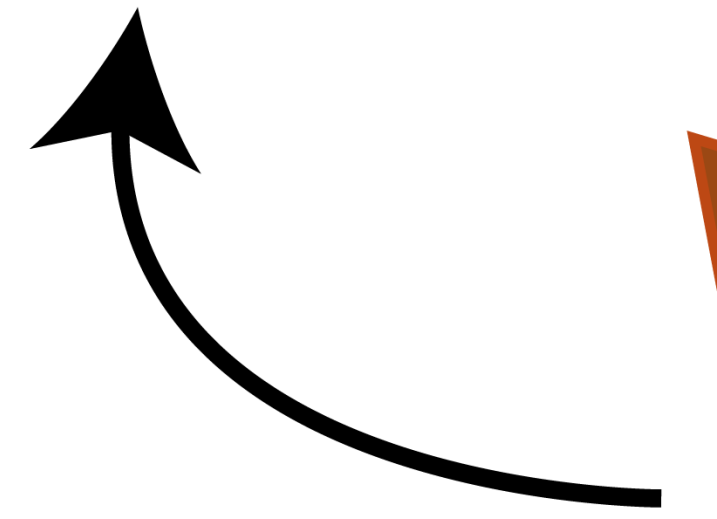
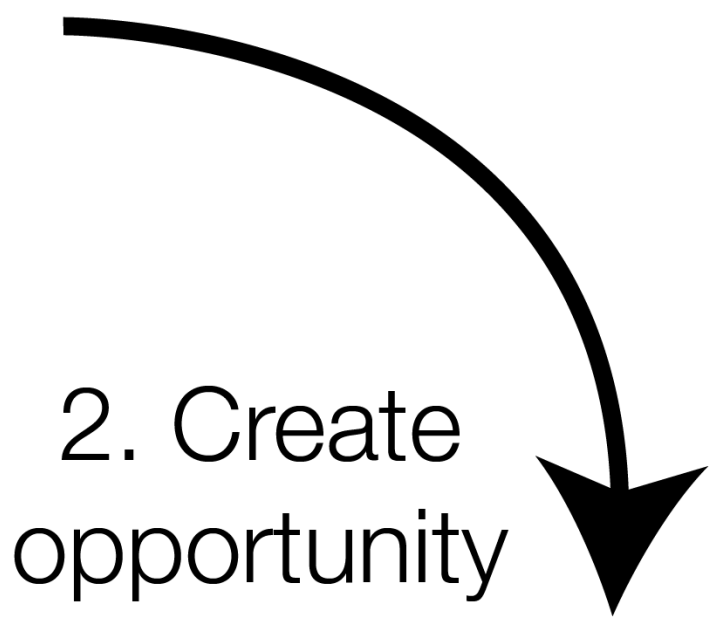
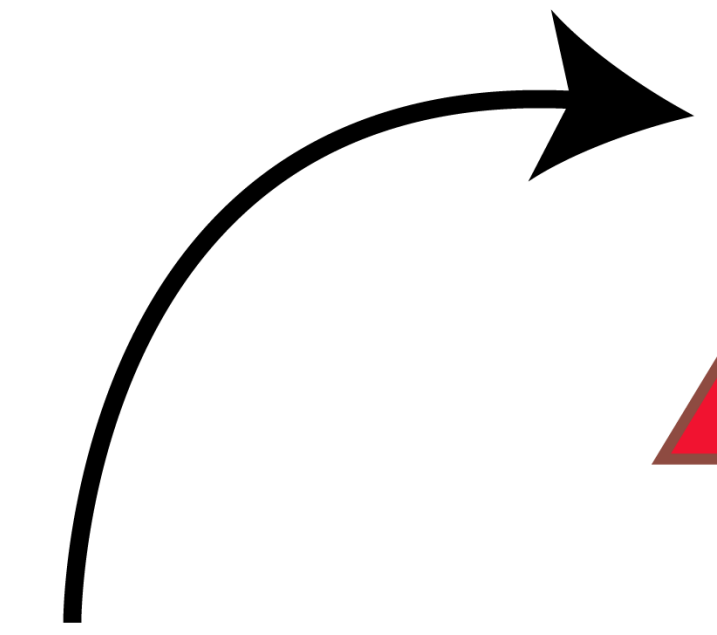
4. Assist



3. Make connections



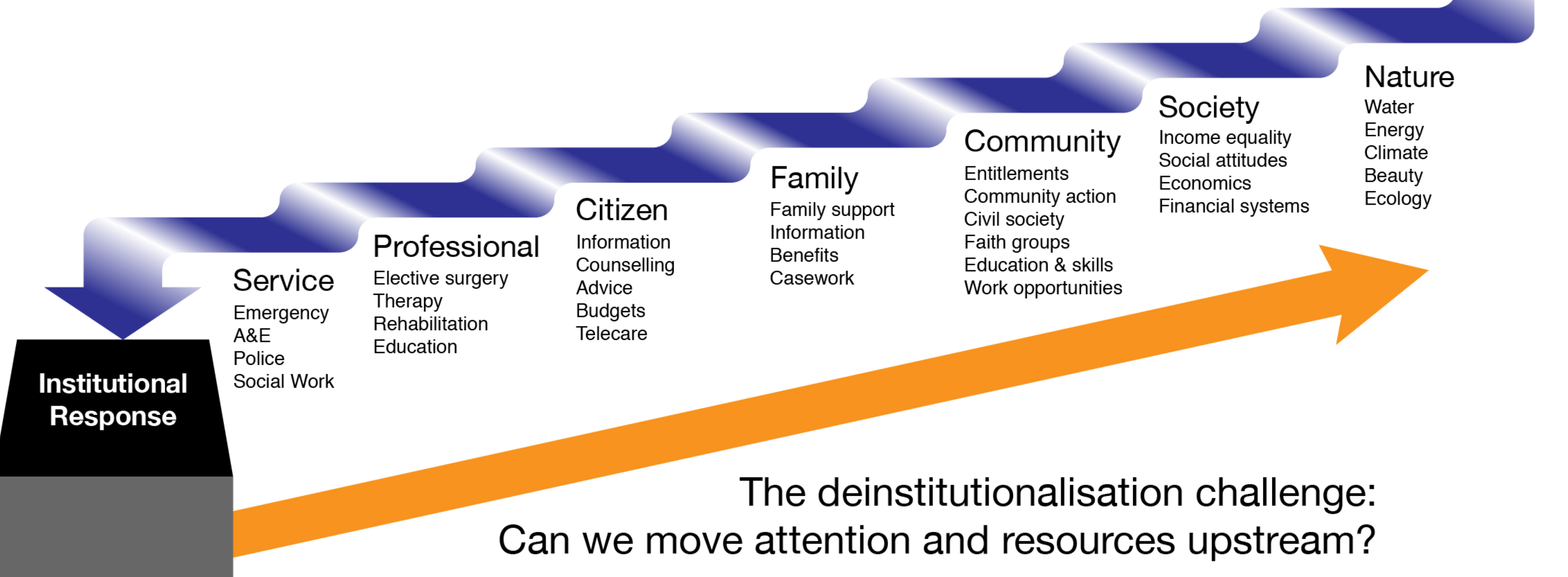
5. Safeguard



Increasing value of upstream responses



Need



Service
Emergency
A&E
Police
Social Work

Professional
Elective surgery
Therapy
Rehabilitation
Education

Citizen
Information
Counselling
Advice
Budgets
Telecare

Family
Family support
Information
Benefits
Casework

Community
Entitlements
Community action
Civil society
Faith groups
Education & skills
Work opportunities

Society
Income equality
Social attitudes
Economics
Financial systems

Nature
Water
Energy
Climate
Beauty
Ecology

Institutional Response

The deinstitutionalisation challenge:
Can we move attention and resources upstream?

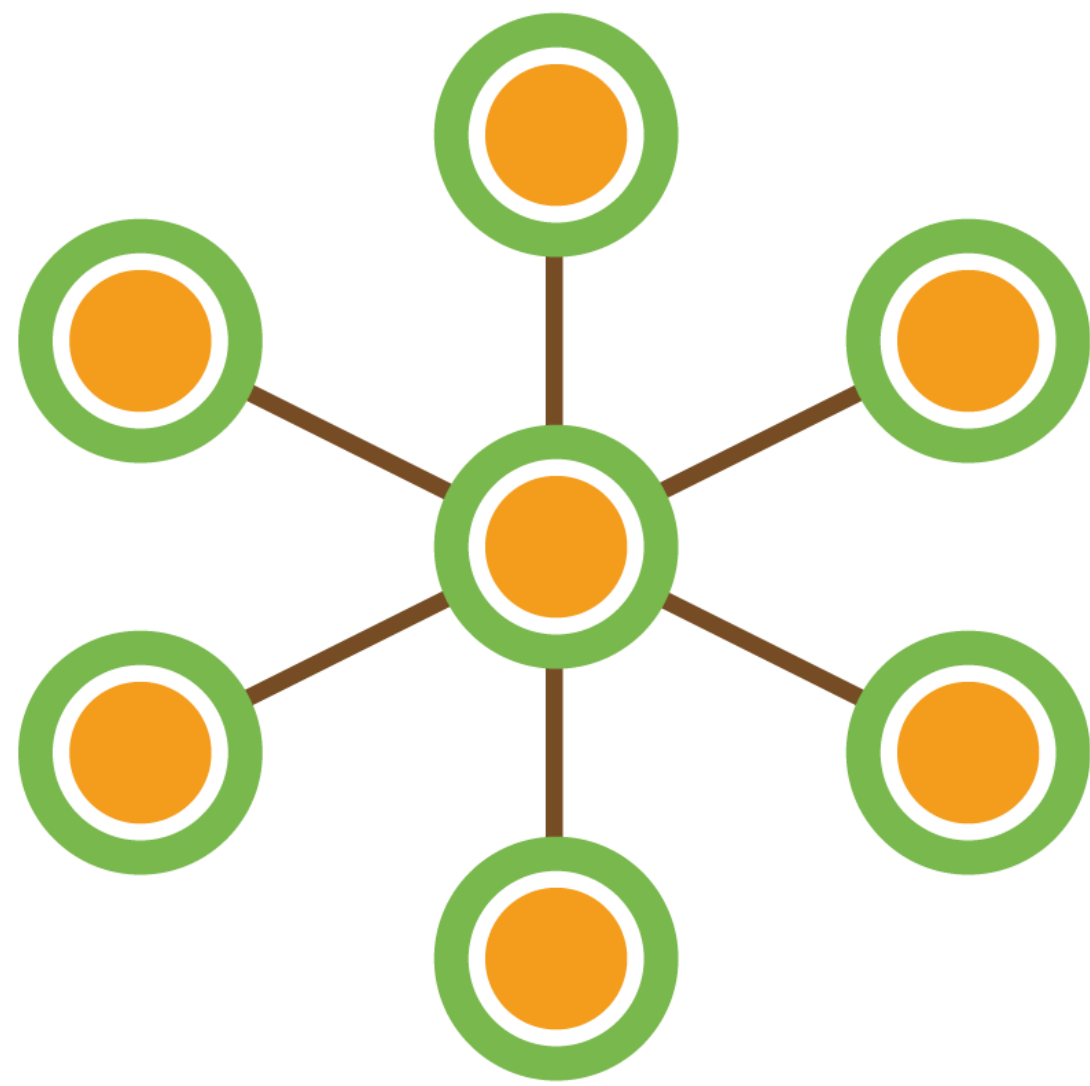


Increasing cost of downstream responses

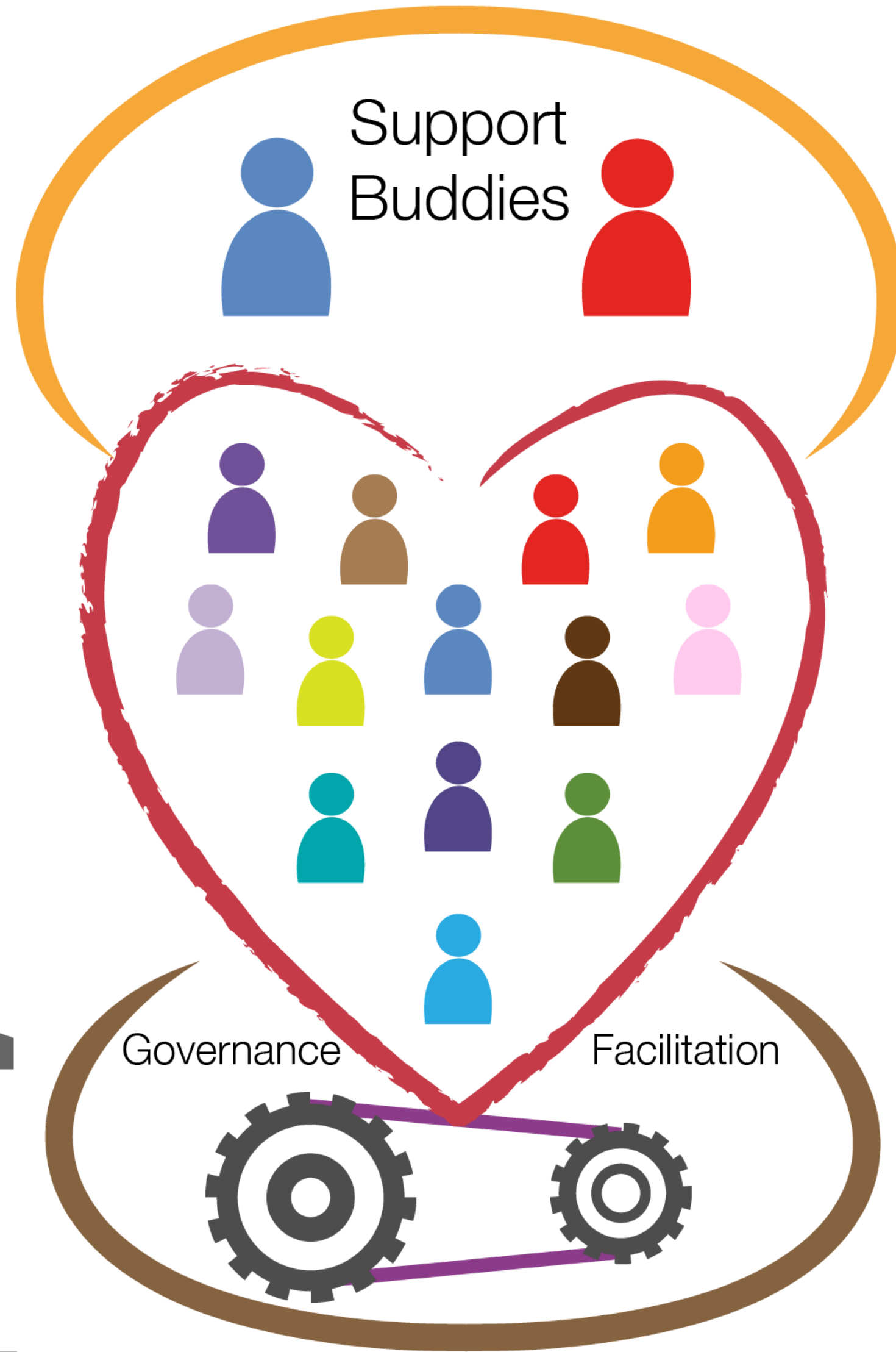
3. Loneliness

Peer support strategies for
changing community from
PFG Doncaster





Network



Support Buddies

Governance

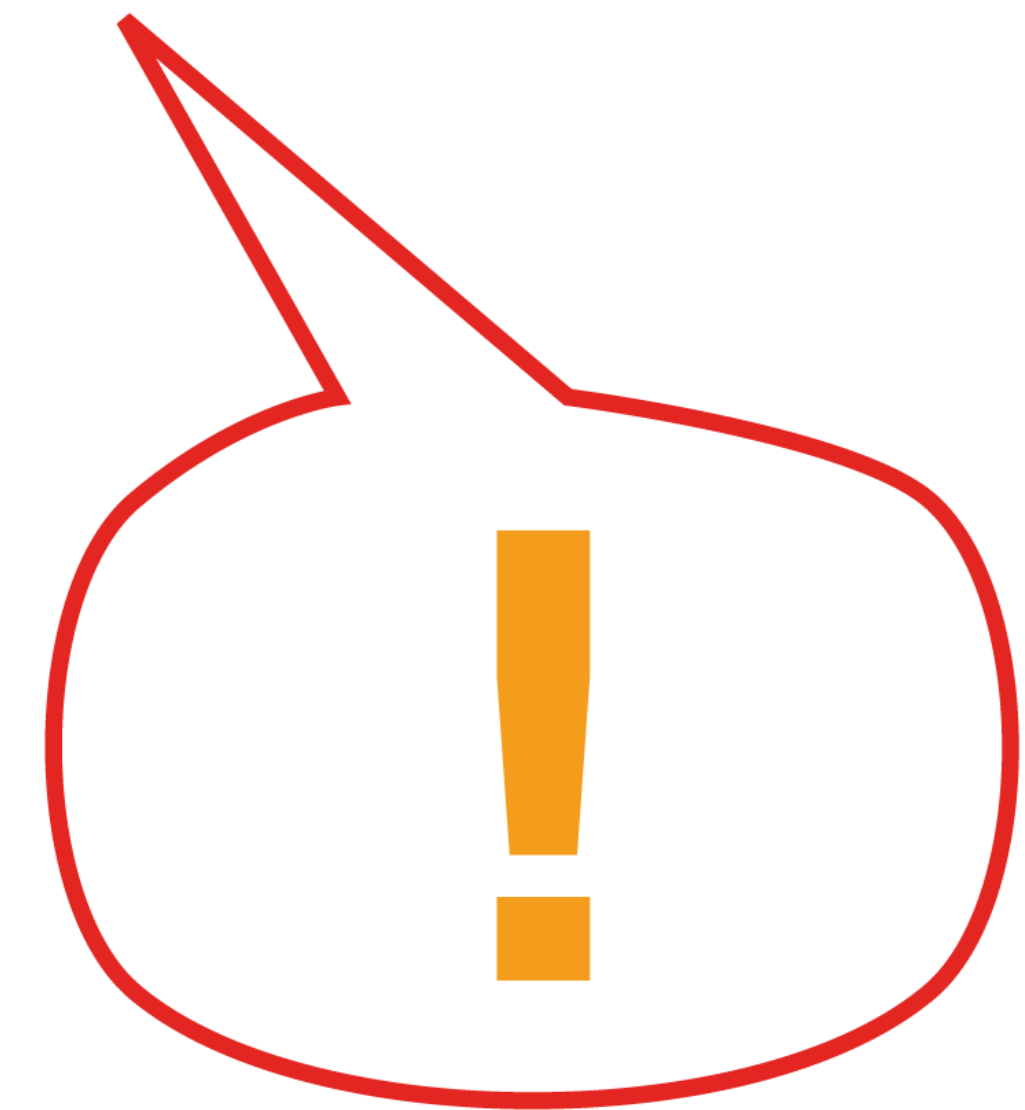
Facilitation



Champion

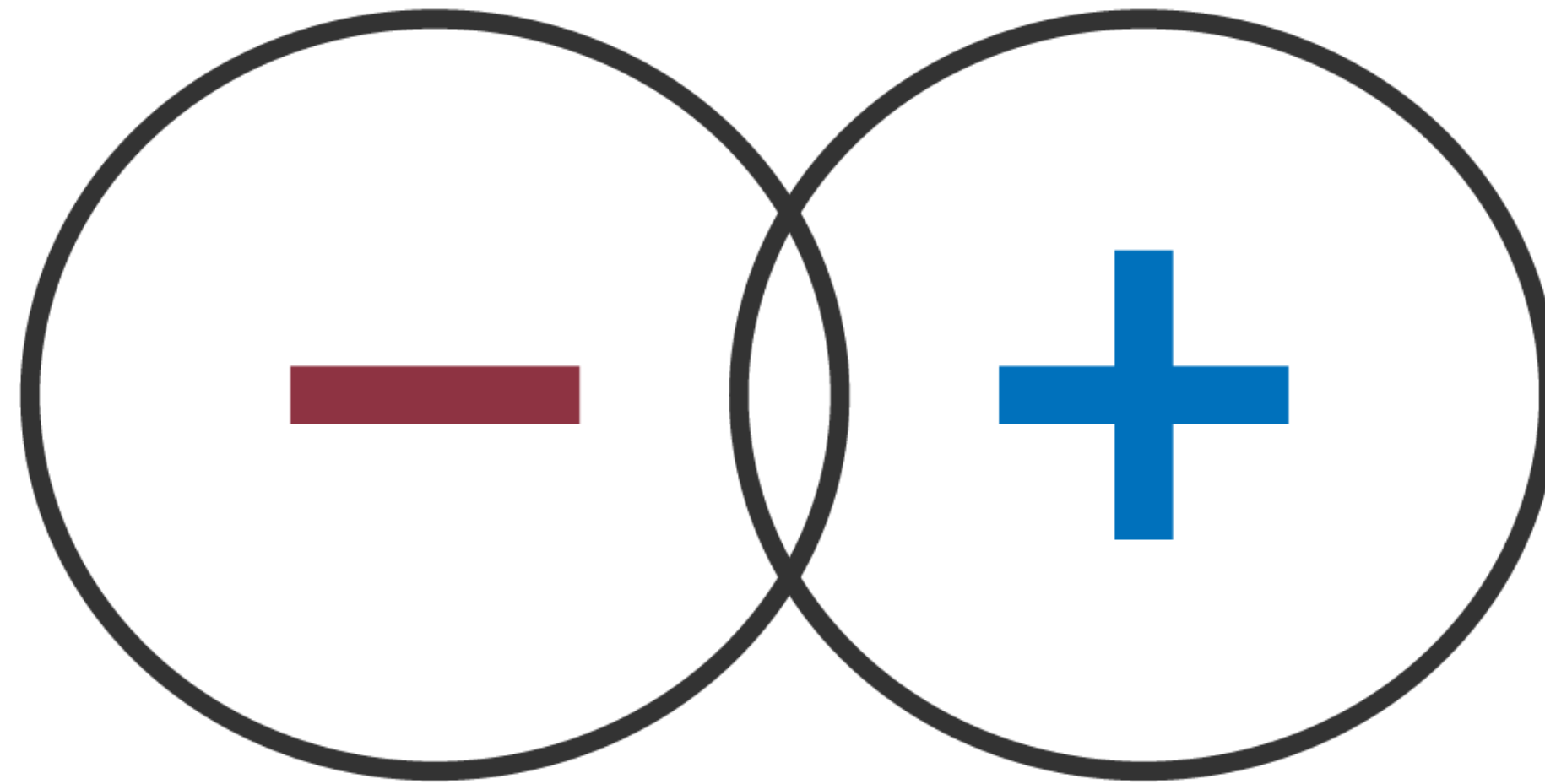


Social Enterprise



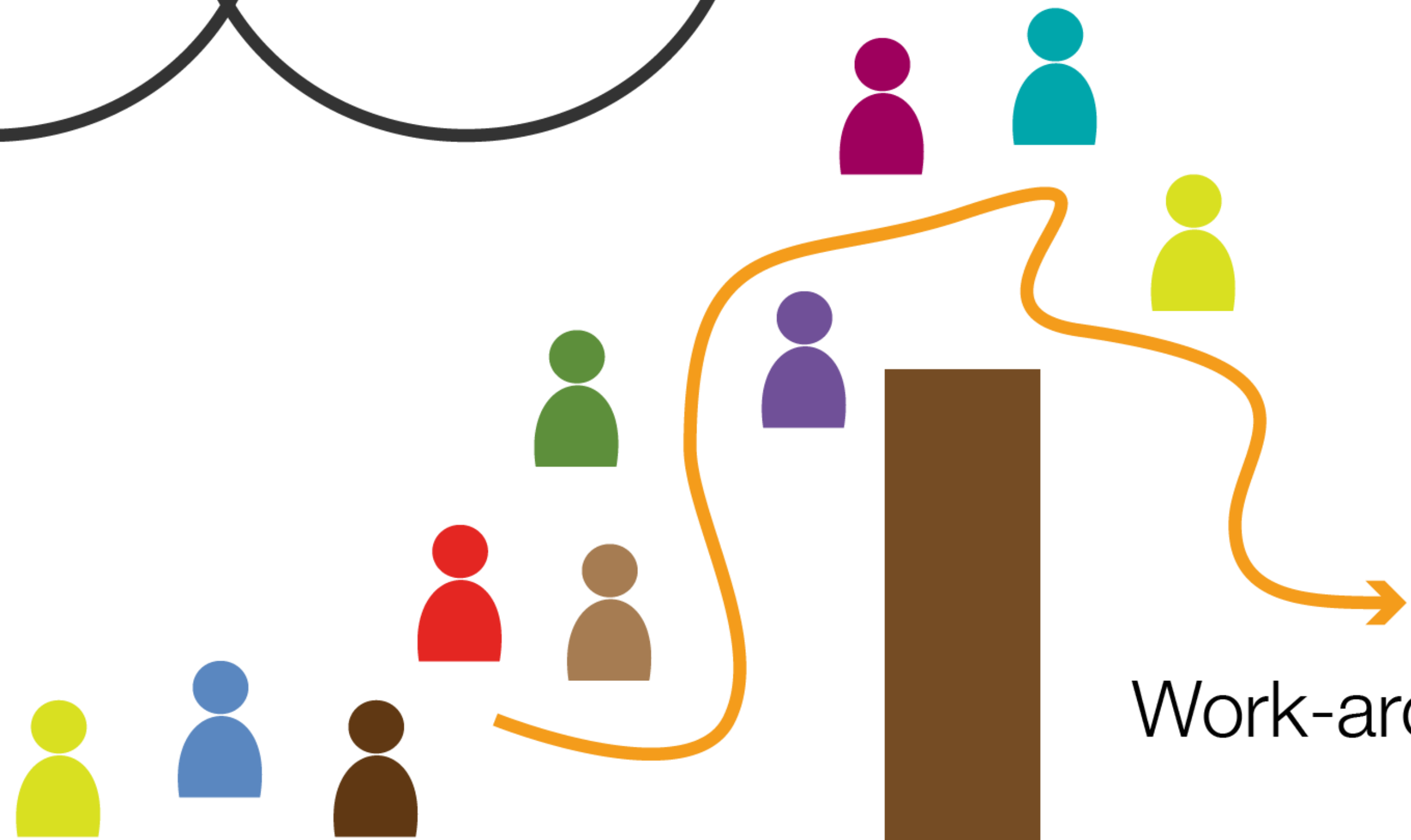
Advocate

things
to change



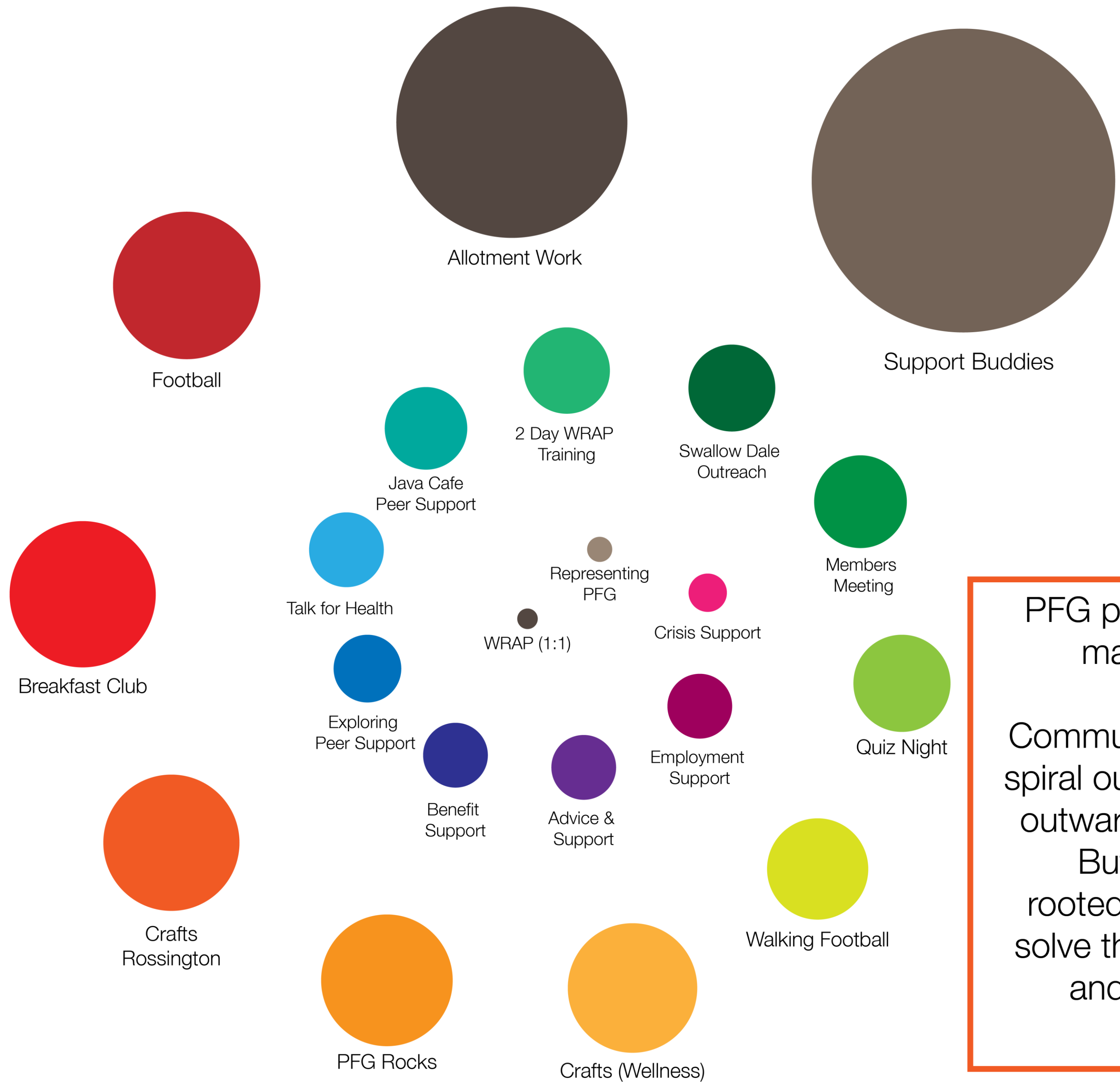
things
to build

Break-through



Work-around

...together...



PFG provides support in many different ways. Peer Support and Community Development spiral out into increasingly outward facing activities. But these are always rooted in helping people solve their own problems and identify their own paths to wellness.

We need to stop thinking that 'we' can make community inclusion happen for 'other people'. Instead we need to **support each other** to transform our communities.

4. Citizen action

We need to reclaim our neighbourhoods to create space for citizenship



The ecology of social justice

We need a deeper democracy where citizens can work together for the good society only we can create...

Green and carbon neutral | kindness and neighbourliness | justice, fairness and equality | creative and developmental



<p>Neighbourhood democracy</p>	<p>Neighbourhoods are clear and defined and local people can meet and decide themselves</p>	<p>Plans Trusts Budgets Bye Laws Deliberative Process Democratic Decisions Sorition Common Ownership</p>
<p>Vibrant civil society</p>	<p>There are local shops, groups, associations, networks for cooperation, creativity and support</p>	<p>Peer Support WomenCentres Cooperative Networks Recycling Local Food Caring Activism Independent Media, Trade & Arts</p>
<p>Community services</p>	<p>Services and support are organised to facilitate local citizen action and strengthen community life</p>	<p>Local Area Coordination Community Budgets Citizen Assemblies Community Social Work Anchor Institutions </p>
<p>Universal public services</p>	<p>Human rights are respected and support by strong and democratically accountable public services</p>	<p>Basic Income Universal Social Care Self-Directed Support inclusive Education Secure Housing for All</p>
<p>New local government</p>	<p>Regions, counties, cities, town and villages have clear, inclusive and democratic constitutions</p>	<p>Governance Reform Community Sourcing Local Economic Development Partnership with Civil Society Community Ownership</p>
<p>Social and economic justice</p>	<p>We share resources fairly to ensure no individual, family or community lacks what they need to thrive</p>	<p>New Regional Settlement End Austerity Local Energy Progressive & Green Taxation 4 Day Week Modern Monetary Theory</p>
<p>Constitutional reform</p>	<p>Society is built on foundations of human rights and democratic principles</p>	<p>Electoral Reform Reformed Second Chamber Written Constitution Bill of Rights Federalism Regional Parliaments</p>

Positive possibilities

Some things we should explore

- Basic income - economic security and freedom
- Neighbourhood-based support
- Self-directed support
- Neighbourhood democracy
- New forms of democratic action (e.g. sortition)