



Mintec

Mintec Guide to Alternative Commodity Price Data

How alternative data can supercharge financial analysis for hedge funds and investment management to deliver unique insights into the food and beverage sector.



Adding Alternative Data
into the mix can identify new
investment opportunities



Alternative perspectives require alternative price data

Traditional market data is widely available, which reduces its ability to offer unique value to hedge funds and investors.

This lack of exclusivity has encouraged hedge funds and the broader financial sector to search for new methods to identify investment indicators, the so-called alpha metric.

Alternative data has become the primary source for creating this alpha metric. Unlike conventional sources, such as earnings reports and macroeconomic data, alternative data comes from outside the traditional financial sector.

Its collection is more stand-alone, and its purpose more closely aligned with specific industry needs.

Often, it is this specific nature which makes the data so unique and rich with insight and untapped opportunity. These qualities make it ideal for hedge funds and investors to identify more unique investment ideas.

Beverages

OF DATA SERIES

324

Beer

Coffee

- Arabica
- Fundamentals
- Mixed
- Robusta

Duties/Refunds

Tea

Wine

“ With global markets like tea valued at over \$55,000 million in 2019, and projected grown by more than 6% by 2027, understanding the impact on prices and where profitability will be greatest for the sector is critical.



Acetate

- Butyl Acetate
- Butyl Glycol Acetate
- Ethyl Acetate
- Isobutyl Acetate
- Polyvinyl Acetate
- Vinyl Acetate

Acetone

Acetonitrile

Acetylene

Acids

- Acetic Acid
- Acetic Anhydride
- Acrylic Acid
- Amino Acid
- Benzoic Acid
- Boric Acid
- Carboxylic Acid
- Formic Acid
- Fumaric Acid
- Hydrochloric Acid
- Hydrofluoric Acid
- Isophthalic Acid
- Lactic Acid
- Nitric Acid
- Phosphoric Acid
- Sulphamic Acid
- Sulphuric Acid
- Tartaric Acid
- Terephthalic Acid

Acrylate

- Butyl Acrylate
- Ethyl Acrylate
- Methyl Acrylate

Acrylonitrile

Alcohols

- Butanol
- Cyclohexanol
- Diethylene Glycol
- Dimethylformamide
- Dipropylene Glycol
- Ethanol
- Ethylene Glycol
- Ethylene Vinyl
- Ethylhexanol
- Fatty Alcohol
- Isobutanol
- Isopropanol
- Methanol
- Methanol
- Neopentyl Glycol
- Propylene Glycol
- White Spirit

Aromatics

- Aniline
- Benzene
- Cyclohexane
- MDI
- Orthoxylene
- Paraxylene
- Phenol
- Sodium Metasilicate
- Styrene
- TDI
- Toluene
- Xylene

Butyl Group

- Butyl Glycol Ether

Caprolactam

Caustic Soda

Ethyl Group

- Ethylene Oxide
- Ethylene Tetrachloride
- Trimethylolpropane

Fertilisers

- Ammonia
- Ammonium Nitrate
- Ammonium Phosphate
- Ammonium Sulphate
- Calcium Ammonium Nitrate
- Diammonium Phosphate (DAP)
- Fertiliser Blends (NPK)
- Monoammonium Phosphate (MAP)
- Phosphate Rock
- Phosphoric Acid
- Phosphorus
- Potash
- Sulphur
- Urea
- Urea Ammonium Nitrate (UAN)

Inorganics

- Aluminium Chloride
- Aluminium Oxide
- Ammonium Bicarbonate
- Bromine
- Calcium Carbide
- Calcium Formate
- Calcium Oxide
- Carbon Black
- Carbon Dioxide
- Carbon Tetrachloride
- Charcoal
- Chlorine
- Chloroform
- Cyclohexanone
- Dicalcium Phosphate
- Dichloromethane
- Di-Isononyl Phthalate
- Dioctyl Phthalate
- Disodium Phosphate
- Epichlorohydrin
- Epoxy Resin
- Ferric Chloride
- Formaldehyde
- Heptane
- Hexane
- Hydrogen Peroxide
- Lanthanum Oxide
- Lithium Carbonate
- Magnesium Carbonate
- Magnesium Carbonate
- Magnesium Oxide
- Magnesium Stearate
- Magnesium Sulphate

- Maleic Anhydride
- Manganese Sulphate
- MEA
- Melamine
- Molybdenum Molybdc Oxide
- MTBE
- Nitrocellulose
- Nitrogen
- Oxygen
- Paraformaldehyde
- Pentaerythrite
- Polyvinylpyrrolidone
- Potassium Persulphate
- Refrigerant
- Silicon Dioxide
- Sodium Dichromate
- Sodium Dithionite
- Sodium Hypochlorite
- Sodium Metabisulphite
- Sodium Nitrite
- Sodium Pentahydrate
- Sodium Persulphate
- Sodium Phosphate
- Sodium Silicate
- Sodium Silicofluoride
- Sodium Sulphide
- Sodium Tripoly Phosphate
- Titanium Dioxide
- Triethanolamine
- Triethylamine
- Trisodium Phosphate
- Tungsten APT
- Urea Formaldehyde
- Zinc Oxide
- Zinc Powder
- Zinc Stearate
- Zinc Sulphate

Lactose

- Anhydrous Lactose
- Lactose Spray-Dried

Methyl Group

- Methyl Ethyl Ketone
- Methyl Isobutyl Ketone

Petrochemicals

- Bisphenol A

- Butadiene
- Ethane
- Ethylene
- Phthalic Anhydride
- Propylene

Pharmaceuticals

- Aspirin
- Chlorthalidone
- Clarithromycin
- Diclofenac Sodium
- Diltiazem
- Domperidone
- Enalapril
- Finasteride
- Fluconazole
- Fluoxetine
- Fluticasone
- Fosfomycin
- Fosinopril
- Furosemide
- Gabapentin
- Gemfibrozil
- Gentamicin
- Glycerine
- Heparin Sodium
- Hydrochlorothiazide
- Ibuprofen
- Itraconazole
- Lamotrigine
- Lansoprazole
- Levodopa
- L-Isoleucine
- Losartan
- Microcrystalline Cellulose
- Nebivolol
- Paracetamol (Acetaminophen)
- Propylene Glycol
- Sodium Fluoride

Rosins

Soda Ash

Surfactants

- Diethanolamine
- Surfactant Anionic
- Surfactant Cationic

- Surfactant Nonionic

Vitamins

- A
- B
- C
- D
- E
- K



Dairy & Eggs

OF DATA SERIES

1107

Anhydrous Milk Fat (AMF)

Butter

- Butter
- Duties
- Fundamentals
- Intervention Stock

Butter Milk Powder (BMP)

Butter Oil

Casein

Cheese

- Analogues
- Asiago
- Beaufort
- Blue
- Brick
- Brie
- Caciotta
- Camembert
- Cantal
- Carre
- Cheddar
- Comte
- Cottage
- Coulommiers
- Crescenza
- Crottin De Chavignol
- Curd
- Duties
- Edam
- Emmental
- Feta
- Fontina
- Fourme D'Ambert
- Fundamentals
- Gloucester
- Gorgonzola
- Gouda
- Grana Padano
- Gruyere

- Italico
- Laguiole
- Leicester
- Maasdam
- Mascarpone
- Monterey Jack
- Mozzarella
- Ossau Iraty
- Parmesan
- Pecorino
- Pont L'Eveque
- Processed
- Provolone
- Raclette
- Ricotta
- Romano
- Roquefort
- Saint Nectaire
- Saint Paulin
- Salers
- Swiss
- Taleggio
- Zamojski

Cream

Egg Products

Eggs

Fat Filled Milk Powder (FFMP)

- FFMP

Lactose

Milk

- Buttermilk
- Condensed
- Fundamentals
- Goat
- Kefir
- Milk
- Sheep
- UHT

Milk Protein Concentrate (MPC)

Skimmed Milk Powder (SMP)

- Fundamentals
- SMP

Whey

- Concentrate
- Fundamentals
- Liquid
- Powder

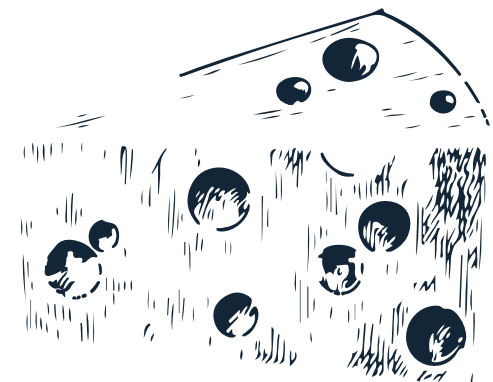
Whole Milk Powder (WMP)

- Fundamentals
- WMP

Yoghurt

“ Dairy sector needs to rapidly adapt to regain profitability.

KPMG December 2019



Economics

OF DATA SERIES

2189

Currencies

- Equity Index

Economic Indicators

- CCI
- Commercial Rent
- Consumer Confidence
- CPI
- FPI
- HICP
- Industrial Rent
- IOP
- ISM
- PMI
- PPI
- RPI
- RSI
- SPPI
- WPI

Tax/Tariff

- Landfill Tax

Financial Indicators

- Interest Rate

Labour

- Employment Level
- Employment Rate
- Jobs All
- Labour Disputes
- Labour Rate
- Minimum Wage
- Unemployment Level
- Unemployment Rate
- Unit Wage
- Vacancies

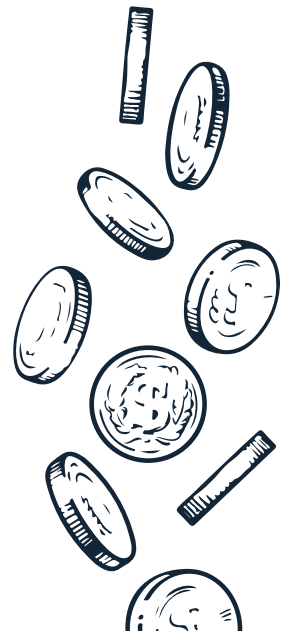
Macroeconomic Indicators

- Exports Total
- GDP
- GDP Annual
- GDP Growth
- Imports Total

Stocks/Shares

“ Understanding profitability by analyzing the historical and current price trends of raw materials can help illustrate the best investment opportunities.

Spencer Wicks, CEO of Mintec.



Energy & Transport

OF DATA SERIES

811

Biofuel

- Biodiesel
- Cooking Oil
- Ethanol
- Ethanol Anhydrous
- Ethanol Hydrous

Coal

Crude Oil

Diesel

Duties/Refunds

- Aviation
- Biodiesel/Blended
- Diesel
- Fuel
- Gas
- Natural Gas
- Petrol (Gasoline)

Electricity

Freight

Fuel

Fuel Oil

Fundamentals

- CO2 Allowance ICE
- Crude Oil Stock
- Diesel Vehicle Fuel Sales
- Emission Reduction Units
- Petrol (Gasoline) Sales

Gas

- Natural Gas

Gas/Heating Oil

- Gas Oil
- Heating Oil
- VGO

Heavy Fuel

Jet Fuel

Kerosene

LPG

Naphtha

Petrol (Gasoline)

PRN

Rail

Road

- Transport Index
- Truck Rate

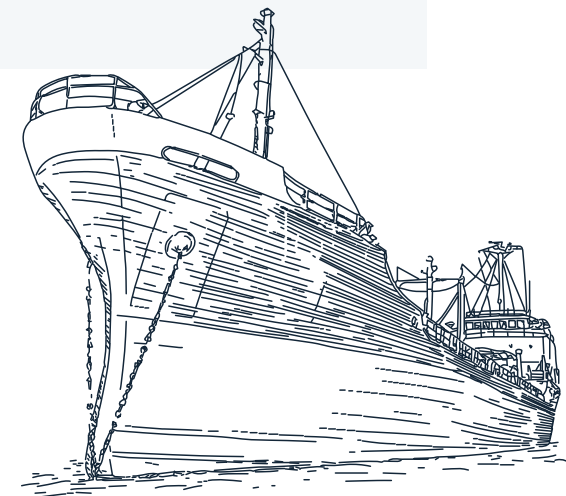
Shipping

Temperature

“ Understand the factors contributing to commodity price linkage.

Prices for certain food commodities like corn, soybeans, and wheat generally considered to trend together. This price linkage is because the crops share common factors which determine the price.

The common factors which determine price for most commodities are the price of energy and transportation costs including crude oil costs.



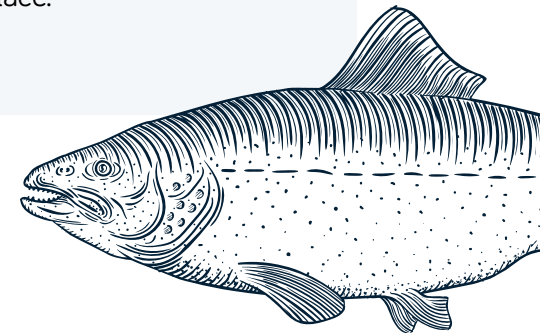
Fish & Seafood

OF DATA SERIES

762

Alaska Pollock	Grouper	Perch	Tuna
Anchovy	Gurnard	Plaice	Turbot
Bonito	Haddock	Pollock	Whiting
Brill	Hake	Pout	
Carp	Halibut	Prawn	
Catfish	Herring	Salmon	
Clam	Hoki	Sardine	
Cod	John Dory	Scallop	
Coley	Ling	Sea Snail	
Crab	Lobster	Seabass	
Crayfish	Lumpfish	Seabream	
Croaker	Mackerel	Skate	
Cusk	Mahi Mahi	Snapper	
Cuttlefish	Megrim	Sole	
Dab	Monkfish	Sprat	
Derbio	Mullet	Squid	
Dogfish	Mussel	Swordfish	
Eel	Octopus	Tilapia	
Flounder	Pangasius	Trout	

“ World demand for fish products is influenced by global population, overall economic growth, and fish consumption worldwide. Prices will be influenced by demand which is often highly linked to the demand from the foodservice sector such as restaurants where significance corruption takes place.





The breath and depth of Mintec's market data enables investment and hedge fund managers to analyse and compare the impact of changing raw material prices on an organisations costs to identify investment opportunities.

Spencer Wicks, CEO

Why choose Mintec

Mintec has been collecting food and raw material price data for over 30 years, which has enabled the multi-trillion-dollar global food sector to manage their costs through the commodities, ingredients and direct inputs they buy.

This alternative data covers more than 10,000 unique and specific price series across the major, niche and emerging food ingredients. Mintec publishes these price data points frequently using robust quality control processes to ensure consistency and conform to agreed data standards. These standards enable procurement teams within global brands to make purchasing decisions, drive efficiency and mitigate risks to their business.

WHO

GLOBAL ANALYSIS LEADERS

Serving the biggest global brands for over 35 years

WHAT

A COMPLETE SOLUTION

Data, analysis & Insight for investment & hedge fund managers

WHY

A TOTAL VIEW OF THE MARKET

Independent, expert & integrated

Food Ingredients

OF DATA SERIES

411

Acids

- Citric Acid
- Hydrochloric Acid
- Potassium Bicarbonate
- Potassium Bitartrate
- Potassium Carbonate
- Potassium Hydroxide
- Sodium Acetate
- Sodium Bicarbonate
- Sodium Bisulphate
- Sodium Silicate

Alkali/Acid Regulators

- Calcium Hydroxide
- Potassium Carbonate

Antioxidants

- Potassium Citrate

Cocoa

- Cocoa Bean
- Cocoa Butter
- Cocoa Liquor
- Cocoa Powder

Emulsifiers

- Cellulose
- Sodium Metaphosphate
- Soyabean Lecithin

Food Colourings

Food Enhancers

Food Flavourings

Guar Seed

Honey

Hops

Maple Syrup

Potato Products

Potato Protein

Preservatives

- Carbon Dioxide
- Natamycin
- Potassium Nitrate
- Propionic Acid
- Sodium Bisulphite
- Sodium Borate
- Sodium Formate
- Sodium Nitrate
- Sodium Sulphite
- Sorbic Acid
- Sulphur Dioxide

Salt

Seaweed

Starches

- Cationic Starch
- Maize Starch (Corn Starch)
- Modified Starch
- Potato Starch
- Tapioca Starch
- Wheat Starch

Sugar

- Fundamentals
- Refunds
- Sugar

Sweeteners

- Acesulfame-K
- Aspartame
- Cyclamate

- Erythritol
- Fructo-Oligosaccharide
- Fructose Syrup
- Glucose
- Glucose Syrup
- Glycyrrhizin
- Maltitol
- Maltose
- Mannitol
- Neotame
- Saccharin
- Sorbitol
- Steviol
- Sucralose
- Xylitol
- Xylo-Oligosaccharide

Thickeners

- Agar
- Alginate
- Carrageenan
- CMC
- Dextrin
- Gelatine
- Gums
- Maltodextrin
- Pectin
- Sodium Pyrophosphate

Vinegar

Yeast



Fruit & Juices

OF DATA SERIES

925

Apple

- Fruit
- Juice

Apricot

- Fruit
- Puree

Avocado

Banana

- Fruit
- Puree

Blackberry

- Fruit
- Juice

Blackcurrant

- Fruit
- Juice

Blueberry

- Fruit
- Juice

Cherry

- Fruit
- Juice

Clementine

Coconut

- Coconut
- Coconut Copra
- Fundamentals

Cranberry

- Fruit
- Juice

Figs

Gooseberry

Grape

- Fruit
- Juice

Grapefruit

- Fruit
- Juice

Guava

Jackfruit

Kiwi

Kumquat

Lemon

- Fruit
- Juice

Lime

- Fruit
- Juice

Lychee

Mandarin

Mango

- Fruit
- Juice
- Puree

Melon

- Bitter
- Cantaloupe
- Chinese
- Galia
- Honeydew
- Melon
- Watermelon
- Winter

Nectarine

Olives

Orange

- Blood
- Juice
- Navel
- Navelina
- Orange
- Pera
- Seville
- Valencia

Papaya

Passion Fruit

- Fruit
- Juice

Peach

- Fruit
- Juice
- Puree

Pear

- Fruit
- Juice

Persimmon

Physalis

Pineapple

- Fruit
- Juice

Plum

- Fruit
- Juice

Pomegranate

Pomelo

Quince

Raspberry

- Fruit
- Juice

Redcurrant

- Fruit

Rhubarb

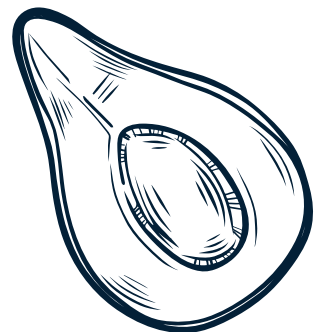
Satsuma

Starfruit (Carambola)

Strawberry

Tamarind

Tangerine



Grains & Feed

OF DATA SERIES

940

Alfalfa

- Meal

Animal Feed

- Cattle
- Chicken
- Fundamentals
- Pig
- Sheep

Barley

- Barley
- Feed
- Fundamentals
- Malt

Beans

- Feed
- Fundamentals

Beetroot (Beet)

- Feed

Blood Meal

Buckwheat

Canary Seed

Carob

Coconut

- Cake
- Husked

Distiller Grains

- Distiller Grains
- Fundamentals

Feather Meal

Fish Meal

Flour

- Flour
- Fundamentals

Grass

- Feed

Guar

- Meal

Hay

- Feed

Maize (Corn)

- Cake
- Feed
- Fundamentals
- Maize (Corn)
- Meal
- Popcorn

Malt

Meat/Bone Meal

Millet

Mixed Feed

- Fundamentals

Niger Seed

Oats

- Feed
- Fundamentals
- Oats

Peas

- Feed
- Fundamentals

Quinoa

Rice

- Basmati
- Duties/Refunds
- Fundamentals
- Japonica
- Meal
- Paddy
- Processed
- Rice
- White

Rye

- Rye

Semolina

Sorghum

- Feed
- Fundamentals

Spelt

Straw

- Feed

Sugarbeet

- Fundamentals
- Meal

Teff

Triticale

- Triticale
- Feed

Wheat

- Durum
- Feed
- Fundamentals
- Gluten
- Milling

Whey

- Feed

Yeast

- Feed



Herbs, Spices & Plants

OF DATA SERIES

273

Allspice	Fenugreek	Tarragon
Aniseed (Anise)	Flowers	Thyme
Annatto	Garlic	Tobacco
Basil	Ginger	Turmeric
Bay Leaves	Lemongrass	Vanilla
Black Pepper	Mace	White Pepper
Caraway Seed	Marjoram	
Cardamom	Mint	
Celery Seed	Mustard Seed	
Chervil	Nutmeg	
Chillies	Onion	
Chives	Oregano	
Cinnamon/Cassia	Paprika	
Cloves	Parsley	
Coriander (Cilantro)	Rosemary	
Cumin Seed	Saffron	
Curry Leaves	Sage	
Dill	Savory	
Fennel	Star Anise	



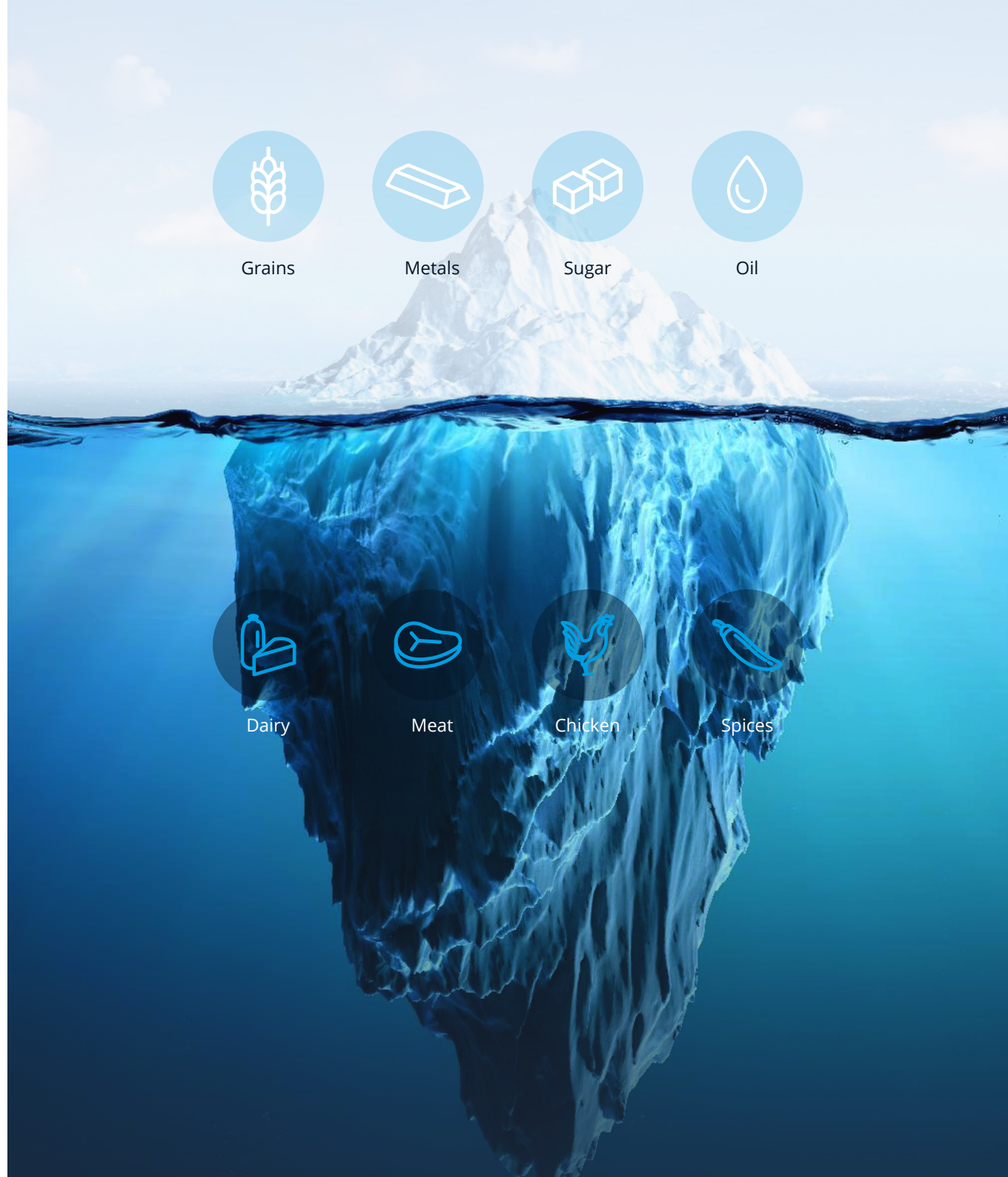


Price data on exchange-traded commodities is just the tip of the iceberg.

Hard to find data on non exchange-traded commodities often represents your biggest spend.

Mintec brings you transparency with independent insight into more than 650 Commodity types. Mintec helps you to integrate commodity price data across your organisation faster and easier, saving you time and effort.

[Request a data sample](#)



Industrial Materials

OF DATA SERIES

130

Base Oil

- Group 1
- Group 2
- Group 3

Construction

- Bitumen (Asphalt)
- Cement
- Polysilicon
- Silicone

Glass

Ink

Minerals

- Kaolin
- Potassium Silicate
- Silica

Rubber

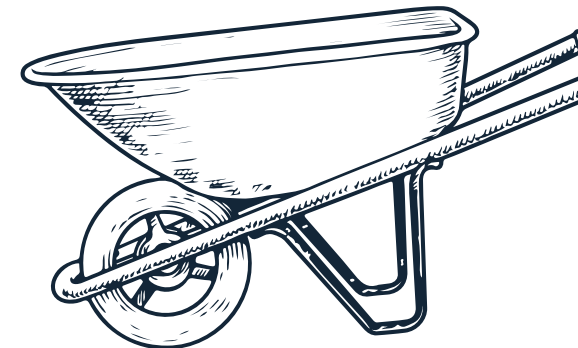
- Natural Rubber
- Synthetic Rubber

Waste

Wax

- Microcrystalline Wax
- Paraffin Wax
- Vegetable Wax

“ Environmental awareness resulting in changing consumer trends is influencing the choice and cost of food packaging and the underlying costs of key raw materials.



Meat & Poultry

OF DATA SERIES

1658

Beef

- Brisket
- Bull
- Calf
- Chuck
- Cow
- Duties
- Feeder
- Fillet (Tenderloin)
- Flank
- Forequarter
- Fundamentals
- Heifer
- Hindquarter
- Knuckle
- Loins
- Mince (Ground Beef)
- Neck
- Offal
- Ox
- Pectoral
- Processed
- Rib
- Round
- Rump
- Shank
- Shin
- Short
- Shoulder
- Skirt
- Steer
- Topside
- Trimmings

Bison

- Bull
- Chuck
- Cow
- Heifer
- Knuckle
- Offal
- Processed
- Ribeye
- Round
- Sirloin
- Striploin
- Tenderloin
- Trimmings

Chicken

- Back
- Boneless
- Breast
- Deadweight
- Drumstick
- Duties
- Fillet
- Fundamentals
- Leg
- Liveweight
- Offal
- Tenderloin
- Thigh
- Wing

Duck

- Breast
- Deadweight
- Leg
- Offal
- Thigh

Frog

Guineafowl

Hides

Lamb & Sheep

- Back
- Breast
- Chine and Ends
- Deadweight
- Flank
- Forequarter
- Foreshank
- Fundamentals
- Hindquarter
- Hindshank
- Leg
- Liveweight
- Loins
- Neck
- Offal
- Processed

- Rack
- Ribs
- Rump
- Shoulder
- Sirloin
- Trimmings

Pork

- Back
- Bacon
- Belly
- Boar
- Butt
- Chops
- Deadweight
- Fillet (Tenderloin)
- Fundamentals
- Ham
- Knuckle
- Leg
- Liveweight
- Loins
- Middle
- Mince
- Neck
- Offal
- Piglet
- Processed
- Rib
- Sausage
- Shoulder
- Sow
- Trimmings

Rabbit

Turkey

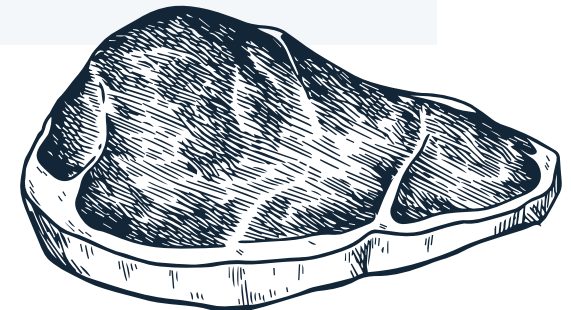
- Breast
- Cutlet
- Deadweight
- Drumstick
- Duties
- Fillet
- Fundamentals
- Leg
- Liveweight
- Neck
- Offal
- Scapula

- Tenderloin
- Thigh
- Wing

Veal

“ World demand for many crops is influenced by global population, overall economic growth, and meat consumption worldwide.

An increase in meat demand often results in a proportionally larger rise in prices for grain such as corn and wheat as well as protein crops like soybeans, which are used as animal feeds in meat production.

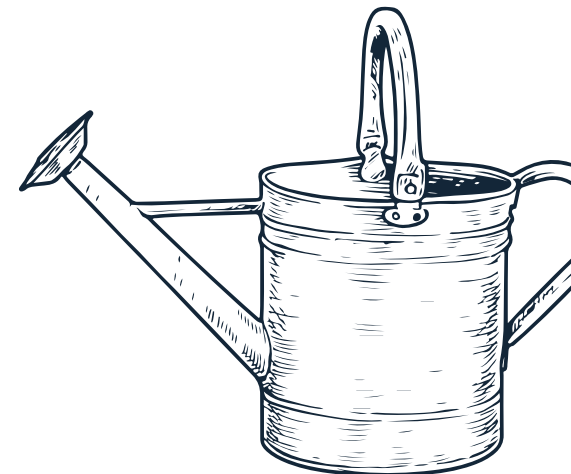


Metals & Ores

OF DATA SERIES

281

Aluminium	Molybdenum	Zinc
Aluminium Alloy	Nickel	
Antimony	Niobium	
Arsenic	Palladium	
Bismuth	Platinum	
Boron	Rare Earth Elements	
Brass	Rhenium	
Cadmium	Ruthenium	
Chromium	Scrap	
Cobalt	Silicon	
Copper	Silver	
Gold	Stainless Steel	
Graphite	Steel	
Indium	Tellurium	
Iron	Tin	
Lead	Tinplate	
Magnesium	Titanium	
Manganese	Tungsten	
Metal Index	Vanadium	



Nuts, Seeds & Dried Fruit

OF DATA SERIES

202

Almond

Sesame Seed

Apricot

Sultana

Brazil Nuts

Walnut

Cashew

Chestnut

Currants

Dates

Desiccated Coconut

Figs

Hazelnut (Filbert)

Macadamia Nut

Peanut (Groundnut)

Pecan

Pine Nuts

Pistachio

Poppy Seed

Prunes

Pumpkin Seed

Raisin

“ Demand on international food markets is being driven-u by a shift in consumer preferences towards healthier snacking and plant-based foods.

In response food manufactures and retails are adapting their product ranges and shifting suppliers to relect these new preferences.





The Benefits of Mintec

Mintec believes that although price information is widely available for exchange-traded commodities, many of the critical inputs to food products are from non-exchange traded ingredients. Which make understanding their real price opaque.

The insight developed from these less visible prices provides evidence of supply and demand trends and suggest the direction for future commodity

purchases. They also help to influence new product development and inform significant investment decisions.

Understanding future profitability is an essential component of any investment decision. Access to Mintec data reveals changing price trends affecting a company's direct food costs. A robust leading

indicator with regards to the future profitability of any business.

This rich data source provides hedge funds and investors an unprecedented level of price granularity for the food and beverage sector. While the breadth of coverage enables comparisons, dependencies and trends to be isolated.



Differentiate your strategy

Our unique price data provides you with an unrivalled perspective across the food and beverage, and CPG sectors so you can develop and implement innovative ideas.



More granular insight

The breadth and depth of our commodity market data can be crucial to help you find your next investment opportunity.



Innovate for the alpha-metric

Our extensive proprietary and 3rd party alternative data is a reliable consistent source for investment indicators.



Combine new data into your analysis

New sources of data plus our award winning SaaS based platform to give you the tools to identify price shifts and changes in raw material markets.



Optimize your workflows

Integrating our alternative data with your traditional sources can help optimize your portfolios and increase returns.

Oilseeds, Oils & Fats

OF DATA SERIES

810

Animal Fat

Castor

- Oil
- Seed

Coconut Oil

- Coconut Oil
- Fundamentals

Cottonseed

- Cake
- Fundamentals
- Meal
- Oilseed

Cottonseed Oil

Duties/Refunds

- Coconut
- Coconut Oil
- Mixed
- Palm
- Palm Kernel
- Palm Oil
- Palm Stearin

Essential Oils

- Aniseed Oil (Anise Oil)
- Cardamom Oil
- Cassia Oil
- Cinnamon Leaf Oil
- Citronella Oil
- Clove Leaf Oil
- Coriander Oil (Cilantro Oil)
- D-Limonene Oil
- Eucalyptus Oil
- Garlic Oil
- Geranium Oil
- Ginger Oil
- Grapefruit Oil
- Lavender Oil
- Lemon Oil

- Lemongrass Oil
- Lime Oil
- Litsea Cubeba Oil
- Mentha Oil
- Menthol Crystals
- Orange Pera Oil
- Patchouli Oil
- Peppermint Oil
- Peppermint Oil
- Petitgrain Oil
- Spearmint Oil
- Tea Tree Oil

Fatty Acids

- Capric Fatty Acid
- Caprylic Fatty Acid
- Coconut Fatty Acid
- Fatty Acid
- Iodine Fatty Acid
- Lauric Fatty Acid
- Myristic Fatty Acid
- Oleic Acid
- Palm Fatty Acid
- Palm Kernel Fatty Acid
- Palmitic Fatty Acid
- Ricinoleic Acid
- Soyabean Fatty Acid
- Stearic Acid
- Tall Oil Fatty Acid

Fish Oil

Glycerine

- Crude
- Glycerine
- Refined
- White

Groundnut (Peanut)

- Cake
- Fundamentals
- Oil

Hemp

Karanji

- Oil

Lard

- Unrendered

Linseed (Flaxseed)

- Linseed (Flaxseed)
- Meal
- Oil

Maize Oil (Corn Oil)

Mustard Oil

Olive Oil

- Extra Virgin
- Fundamentals
- Lampante
- Pomace
- Refined
- Virgin

Palm Kernel

- Fundamentals
- Meal
- Oilseed

Palm Kernel Oil

- Fundamentals
- Oil
- Olein
- Stearin

Palm Oil

- Fundamentals
- Oil
- Olein
- Stearin

Rapeseed (Canola)

- Cake

- Fundamentals
- Meal
- Oilseed

Rapeseed Oil (Canola Oil)

- Fundamentals
- Oil

Safflower

Sage Oil

Sesame

- Oil

Soyabean

- Cake
- Crush
- Fundamentals
- Hulls
- Meal
- Oilseed

Soyabean Oil

- Fundamentals
- Oil

Stearin

Sunflower

- Cake
- Fundamentals
- Meal
- Oilseed

Sunflower Oil

- Fundamentals
- Oil

Tallow/Grease

- Grease
- Tallow

Vegetable Oil

- Fundamentals



Plastics & Textiles

OF DATA SERIES

584

Abaca

Acrylic Fibre

Acrylonitrile Butadiene
Styrene (ABS)

- ABS
- Recycled

Coconut Coir

Cotton

- Fibre
- Yarn

Ethylene Vinyl Acetate
(EVA)

Jute

Leather

Methyl Methacrylate
Butadiene Styrene
(MBS)

Nylon

- Chips
- Recycled
- Yarn

Polyamide (PA)

- PA
- Recycled

Polybutylene
Terephthalate (PBT)

Polycarbonate (PC)

- PC
- Recycled

Polycotton

Polyester

- Chips
- Fibre
- Yarn

Polyethylene (PE)

- High Density Polyethylene (HDPE)
- Linear Low Density Polyethylene (LLDPE)
- Low Density Polyethylene (LDPE)
- Recycled

Polyethylene
Terephthalate (PET)

- PET
- Recycled

Polymethylmethacrylate
(PMMA)

Polyols

Polyoxymethylene
(POM)

- POM
- Recycled

Polypropylene (PP)

- PP
- Recycled

Polypropylene
Carbonate (PPC)

- Recycled

Polystyrene (PS)

- Expanded Polystyrene (EPS)
- PS
- Recycled

Polyvinyl Alcohol (PVA)

Polyvinyl Chloride (PVC)

- PVC
- Recycled

Polyvinylidene Chloride
(PVDC)

Polyviscose

Silk

- Raw

Spandex (Elastane)

Styrene Butadiene
Copolymer (SBC)

Styrene-Acrylonitrile
(SAN)

Thermoplastics

Viscose Rayon

- Fibre
- Yarn

Waste

Wool



Pulp, Paper & Wood

OF DATA SERIES

582

Board

Cartonboard (Boxboard)

Composites/Panels

- Chipboard
- Fibreboard
- Panels/Boards
- Plywood

Cork

Fluting (Corrugated Medium)

Fuelwood/Woodchips

Fundamentals

Kraft Paper

- Kraftliner
- Sack Kraft Paper

Logs

- Logs Hardwood
- Logs Softwood
- Pulplogs
- Sawlogs

Paper

- Envelope
- Printing
- Publication
- Recycled
- Reels
- Sheets
- Sheets
- Tissue
- Waste

Pulp

- Hardwood
- Mixed
- Recycled
- Softwood

Pulpwood

- Hardwood
- Softwood

Sawn Hardwood

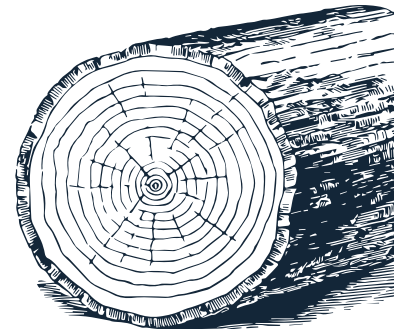
- Ash
- Beech
- Mahogany
- Meranti
- Mixed
- Oak
- Walnut

Sawn Softwood

- Fir
- Hemlock
- Mixed
- Pine

Sawnwood

Testliner



Vegetables & Pulses

OF DATA SERIES

1262

Artichoke	Chicory	Peas	Tomato
Asparagus	Chilli	<ul style="list-style-type: none">• Mangetout• Peas• Snap Peas• Snow Peas	<ul style="list-style-type: none">• Beef• Cherry• Field• Green• Plum• Processed• Round• Salad• Tomato• Vine
Aubergine (Eggplant)	Courgette (Zucchini)	Peppers	Turnip
Bamboo Shoots	Cucumber	Potatoes	Watercress
Beans	Daikon	Pulses	
Beetroot (Beet)	Endive	<ul style="list-style-type: none">• Beans• Chickpeas• Lentils• Peas• Sprouts	
<ul style="list-style-type: none">• Beetroot (Beet)• Juice	Fennel Root	Pumpkin	
Broccoli	Garlic	Radicchio	
Brussels Sprout	Gherkins (Pickles)	Radish	
Butternut Squash	Ginger Root	Rocket (Arugula)	
Cabbage	Horseradish	Salsify	
Carob	Kohlrabi	Shallot	
Carrot	Leek	Spinach	
<ul style="list-style-type: none">• Carrot• Juice	Lettuce	Spring Onion (Scallion)	
Cassava	Mushroom	Swede (Rutabaga)	
Cauliflower	Mustard Leaf	Sweet Potato	
Celeriac	Okra	Sweetcorn	
Celery	Onion		
Chard	Parsnip		





Mintec

Analysis of alternative data reveals how food prices are changing over time. Helping to spot emerging trends and identify investment opportunities in the food and beverage sector.

- **Quickly access +14,000** independent food ingredients & soft commodity prices & market analysis.
- **Automated** - Remove human error, save time and increase efficiency with automated data transfers and dynamic data updates.
- **See clearly** what's behind food raw material prices & driving current market trends.
- **Integrated** - Aggregate and integrate data with your existing systems, data sets and models more easily for deeper insights and a more efficient workflow.
- **Use actionable insight** to spot and respond to the latest price trends and emerging opportunities.
- **Dynamic** - Respond to changing business, user and system needs more readily - plus benefit from enhanced collaboration and sharing capabilities.
- **Develop investment and hedging strategies** to manage risk & maximize return.

