



NEWBERRY
TRAILS

Standard Features

Spend your time living your best life! Rush offers more standard luxury features (with out expensive upgrades) than any other Puyallup homebuilder. Rush communities are designed and built with integrity to last for years to come... a difference you'll notice from the minute you walk into a Rush home.

Neighborhood Amenities

- New homes in an ideal close in Puyallup location
- HOA maintained front yards for long-term community maintenance
- Well-designed streetscapes, lighting and landscaping throughout common areas to ensure long term community appeal (HOA managed)
- Designer selected cladding and home color choices preserve balance and neighborhood consistency
- 10 year home warranty for every new Rush home



Home Exteriors

- Fully landscaped front yards include WiFi controlled exterior lighting and irrigation systems
- Fully fenced backyards - natural stained cedar fencing
- Sophisticated siding & stone accents (per home plan)
- Exterior trim on all window and doors
- Covered outdoor living spaces include sealed cedar decks and optional gas fireplace
- Exposed aggregate driveway, porch and patios
- Two frost free exterior hose bibs
- Two convenient waterproof exterior power outlets
- Lifetime warranted roof shingles to original owner
- Windows with lifetime warranty to original owner
- Siding with 25 year transferable warranty

Home Interiors

- Modern 2-panel painted doors throughout
- Millwork is professionally installed & expertly site finished around doors, stairs, windows and flooring
- Extensive use of large windows, include exterior screens
- Extremely durable plank style engineered flooring throughout first floor, resists scratches, dulling and includes a limited lifetime warranty
- Plush carpet in carpeted areas on second floor (per plan)
- High-end open rail stairway with wood caps
- Gas fireplace tiled to ceiling with kiln fir mantle to match selected cabinetry in Great Room
- Laundry room with sink & extra cabinetry (per plan)
- Closets include organizational shelf systems



R RUSH
Residential

Building Exceptional Homes.

www.RushResidential.com

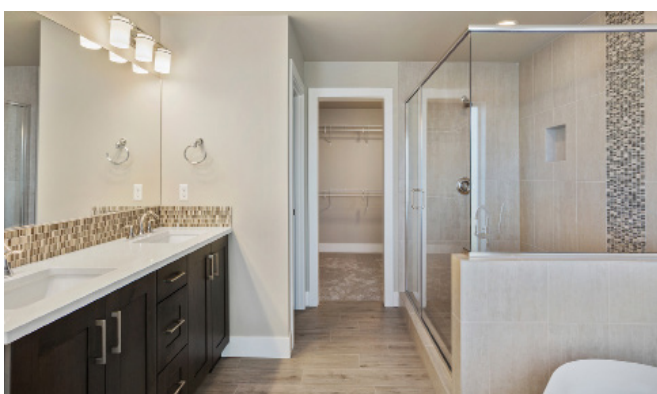
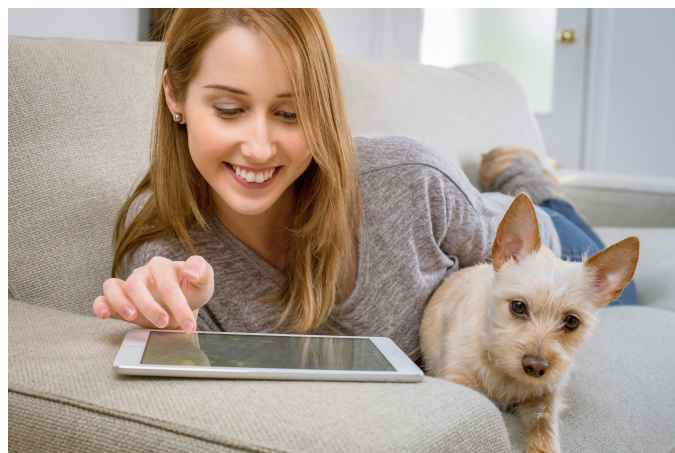


NEWBERRY TRAILS

Standard Features Continued ...

Technology & Energy Efficiency

- Second floor is pre-wired for a WiFi access hub which can enable a stronger WiFi signal throughout home
- Central media panel for ease of home connectivity
- Three CAT6 outlets (Great Room, Den & Master)
- Energy efficient furnace offers a 95% AFUE efficiency rating
- WiFi programmable thermostat, for temperature updates remotely from virtually any device
- On-Demand tank-less hot water heater reduces energy consumption significantly
- Automated whole home ventilation system for reduced humidity and increased interior comfort
- WiFi programmable front yard irrigation system
- Front yard landscape lighting fixtures with WiFi control



Kitchens

- Kitchen cabinetry with modern recessed front panels, upper crown moldings & designer knobs
- High-end Belmont cabinetry with solid construction, hidden hinges and beautiful finishes
- Tall 36" upper cabinets with crown molding offer extra storage, and include under cabinet LED lighting
- Soft close dovetail drawers throughout kitchen
- Quartz counters & full height 3x6 subway tile backsplash
- Large stainless steel under-mount sink with convenient pull-out faucet
- Stainless steel appliance package: 30" gas five-burner range & designer chimney hood, built-in microwave, modern gallery refrigerator, dishwasher & disposal
- Oversized island with eating bar
- Ribbon windows strategically placed in back-splash to increase natural light (per plan)
- Walk-in pantries with stylized satin etched glass door (per plan)

Master Suite & Bathrooms

- Upgraded cabinetry ideal for bathroom spaces
- Premium tiled counter tops & back splash
- Quartz Master Bath counter tops with designer accent deco back splash
- Huge glass shower, tiled walls with art deco tiles, fiberglass shower floor (no grout lines to clean) & large soaking tub included in Master Bathroom
- Tasteful lighted ceiling fan also in Master Suite

Building Exceptional Homes.