



BUILDING AN
EXCEPTIONAL
FUTURE,
TOGETHER.

FOR LEASE

WATERSTONE

8012 112TH ST. CT. E., PUYALLUP



FEATURES

- Class A Office Building
- Beautiful Lobby and Common Area
- Abundant Parking Available
- Convenient South Hill Location
- Easy Access from Canyon Road
- Professionally Managed by Rush Properties

CURRENT AVAILABILITY

SUITE	SIZE	AVAILABLE
220	3,644	Q1 2022
240	1,930	Now
220 & 240	5,574	Now

CONTACT

Karen Fairall, CCIM
 Director of Brokerage Services
 t 253.858.3636
 f 253.858.3188
 kfairall@therushcompanies.com

CBA # 465361

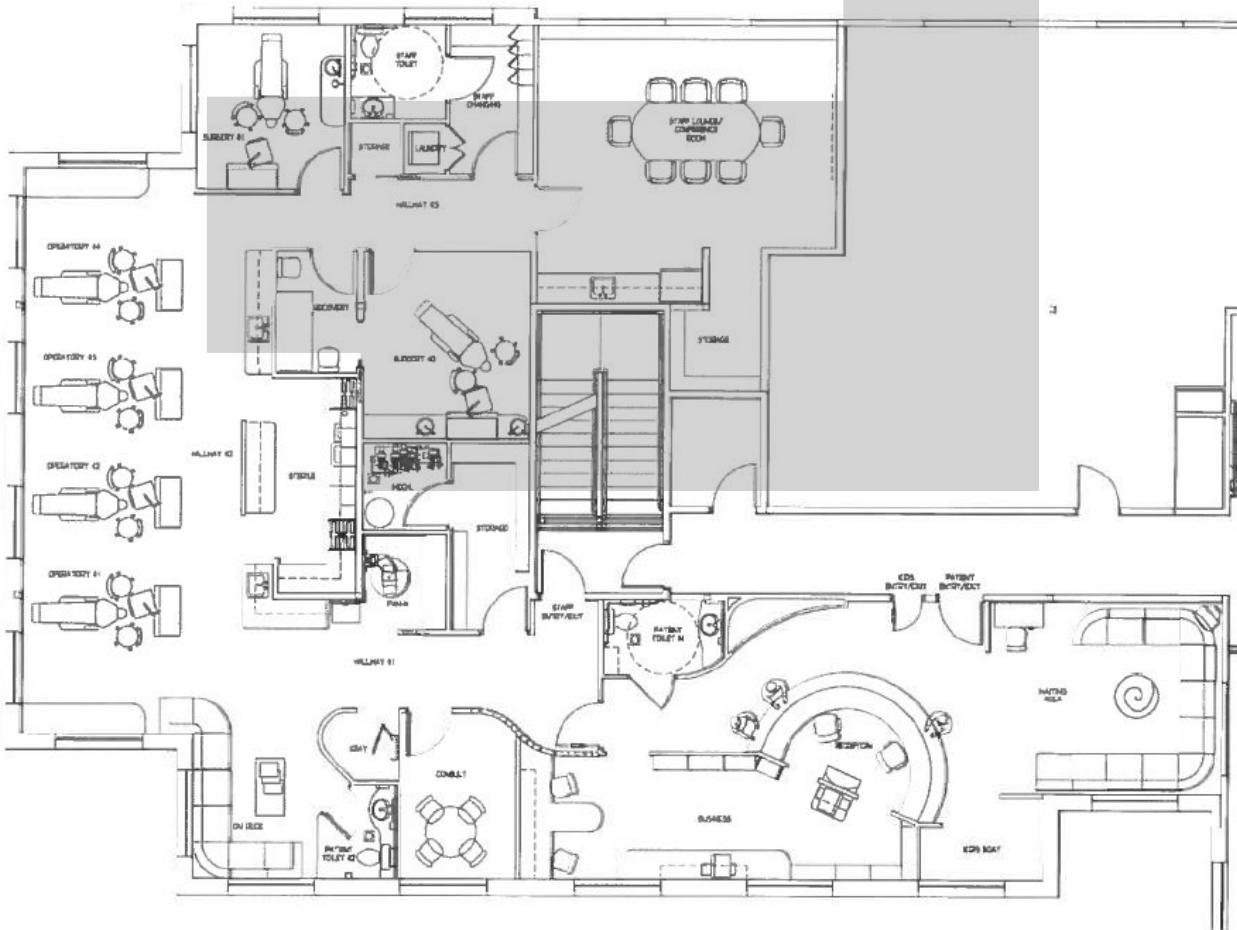


BUILDING AN
EXCEPTIONAL
FUTURE,
TOGETHER.

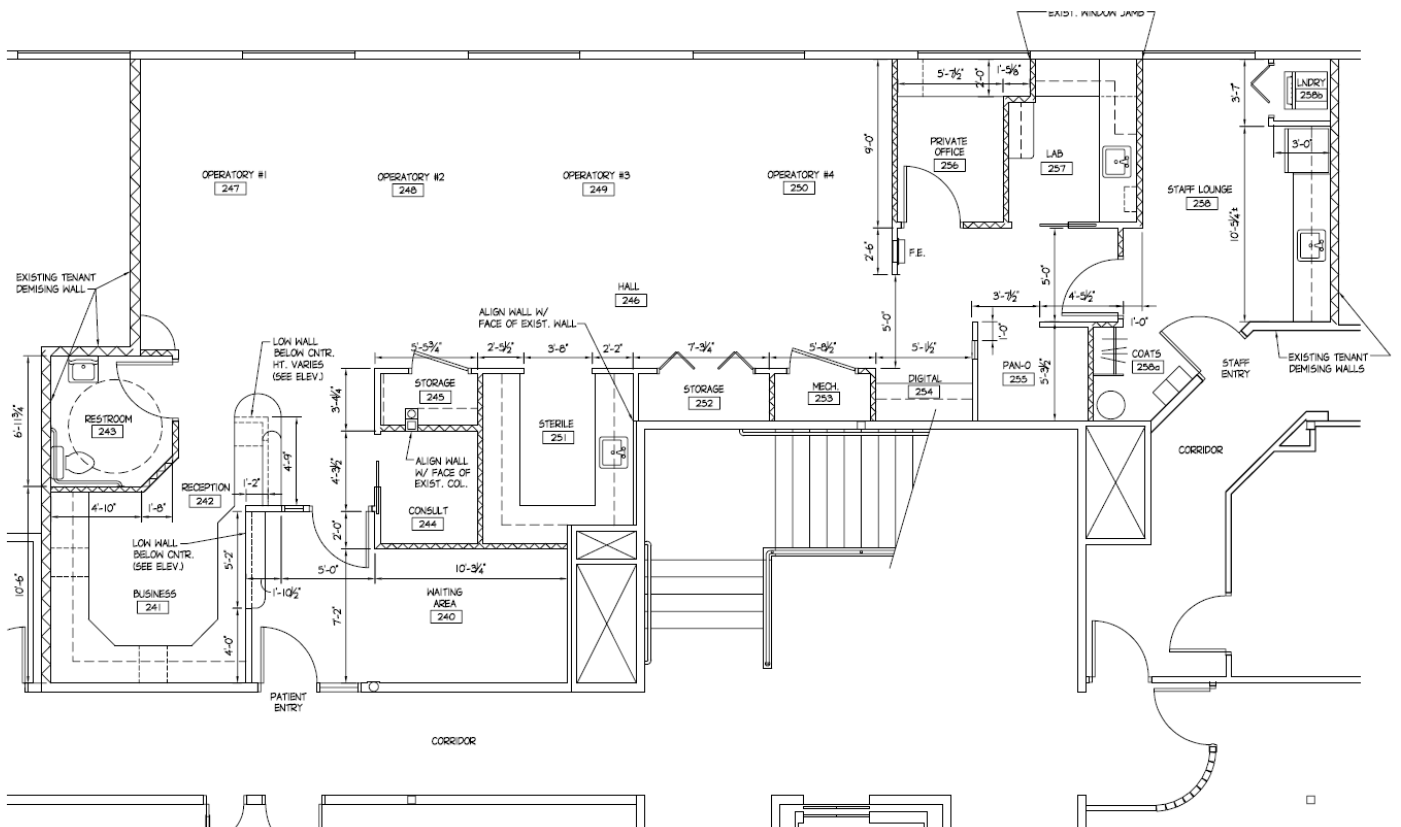
FOR LEASE

WATERSTONE

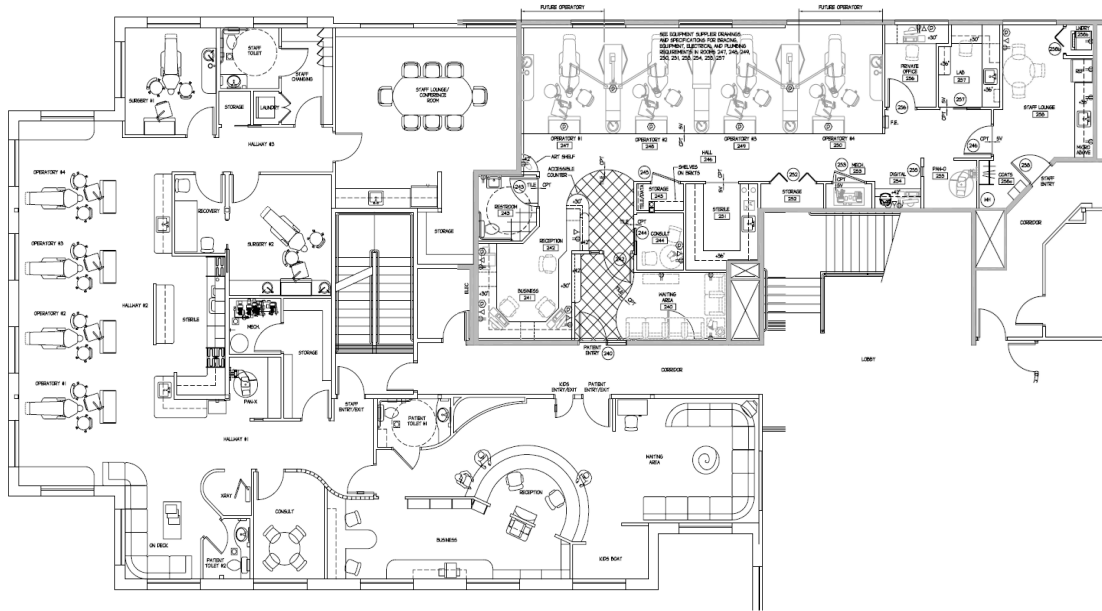
8012 112TH ST. CT. E., PUYALLUP



Suite 220- 3,644 Rentable Square Feet



Suite 240 - 1,930 Rentable Square Feet



Suite 220 & 240 Combined - 5,574 Rentable Square Feet