

**R**  
RUSH

# The Mayfield

2,899 sf  
8/14/20

*Cushman Pointe*



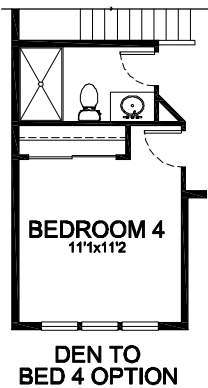
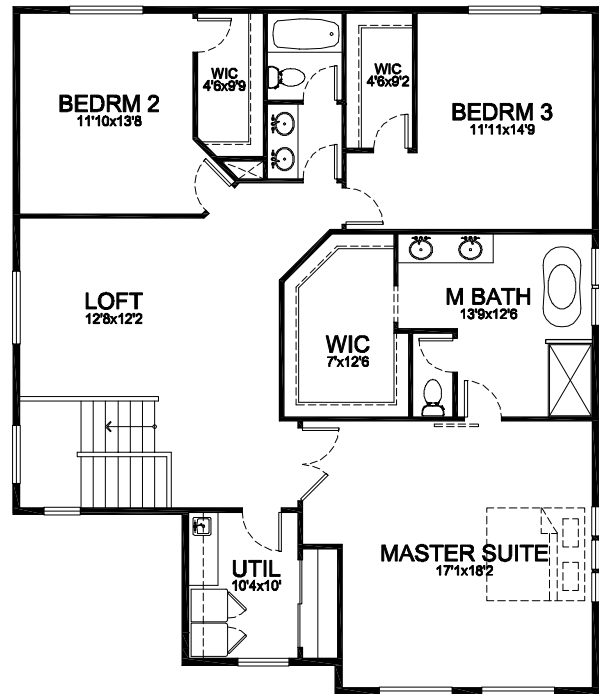
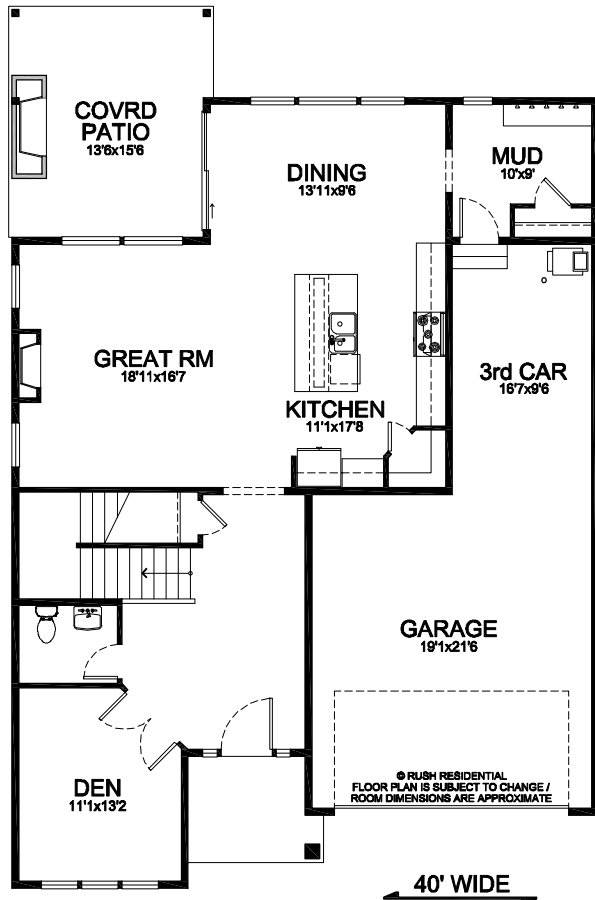
CRAFTSMAN EXTERIOR



TRANSITIONAL EXTERIOR

Building Exceptional Homes.  
[www.RushResidential.com](http://www.RushResidential.com)

Reported square footage and floor plans are approximate. Base price does not include options. Plans shown are a general representation of, and may vary from actual constructed floor plan. Standards vary depending on neighborhood. For more information, contact your Rush Residential sales representative. Rush Residential reserves the right to change the floor plan at any time.



Building Exceptional Homes.  
[www.RushResidential.com](http://www.RushResidential.com)

Reported square footage and floor plans are approximate. Base price does not include options. Plans shown are a general representation of, and may vary from actual constructed floor plan. Standards vary depending on neighborhood. For more information, contact your Rush Residential sales representative. Rush Residential reserves the right to change the floor plan at any time.