

PROJECT:	Circulators	UNIT TAG:		QUANTITY:	1
REPRESENTATIVE:	Hurley Engineering	TYPE OF SERVICE:	Recirculation	DATE:	
ENGINEER:	TBD	SUBMITTED BY:	Devin Carle	DATE:	
CONTRACTOR:	TBD	APPROVED BY:		DATE:	
		ORDER NO.:		DATE:	

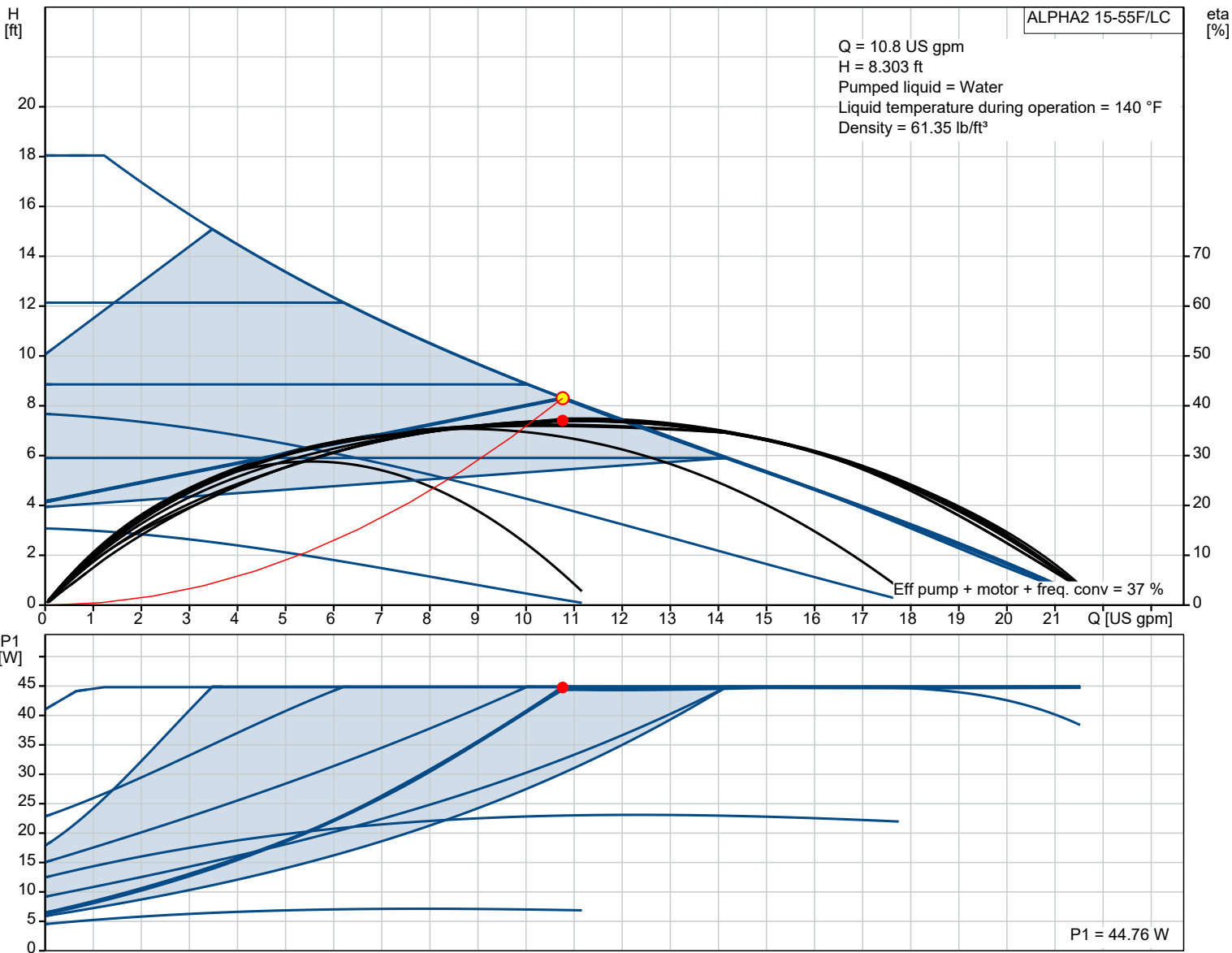


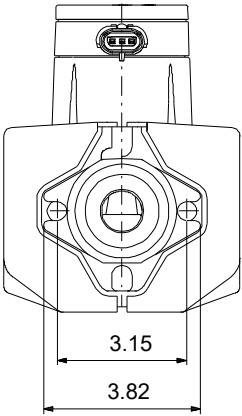
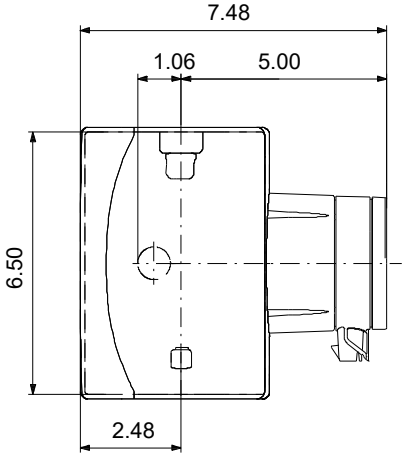
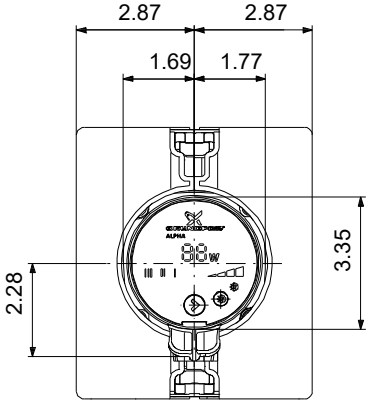
ALPHA2 15-55F/LC

Featuring AUTOADAPT and constant-pressure control modes, the Grundfos ALPHA2 provides the lowest energy consumption and greatest flexibility in a high-efficiency ECM variable speed circulator designed for a wide variety of heating and hot water recirculation applications.

Product photo could vary from the actual product

Conditions of Service	Pump Data	Motor Data
Flow: 10.8 US gpm	Maximum operating pressure: 145.04 psi	P1 max: 5 .. 45 W
Head: 8.303 ft	Liquid temperature range: 35.6 .. 230 °F	Rated voltage: 115 V
Efficiency: 37 %	Maximum ambient temperature: 104 °F	Main frequency: 60 Hz
Liquid: Water	Approvals: ETL, FCC	Enclosure class: IP42
Temperature: 140 °F	Pipe connection: 1 1/2	Insulation class: F
NPSH required: ft	Product number: On request	Motor protection: NONE
Specific Gravity: 0.985		Thermal protection: ELEC





Materials:
Pump housing: Cast iron
Pump housing: EN 1561 EN-GJL-150
Impeller: Composite

Count	Description
-------	-------------

1	ALPHA2 15-55F/LC
---	------------------



Product photo could vary from the actual product

Product No.: On request

The Grundfos ALPHA2 is a high-efficiency, variable speed circulator fitted with electronically commutated motor. Designed for circulating liquids in heating systems.

It features a constant pressure control mode and a constant curve with each three settings.

The factory default setting is AUTOADAPT which continuously adjusts the pump performance to the actual heat demand, i.e. the size of the system and the changing heat demand during the year.

The function will find the setting that provides optimal comfort with minimal energy consumption.

It contributes to fast, safe and easy commissioning.

The intuitive one-button operation and LED display makes the selection of the settings easy. The large LED display shows the current energy consumption in Watts and estimated flow in gallons per minute.

ALPHA2 materials and design are resistant to blockage from magnetite found in hydronic systems.

The robust startup enables ALPHA2 to continuously attempt to restart – indefinitely – in blocked rotor conditions.

ALPHA2 is complete with an integrated check-valve, and nut captures for flanges.

For power connection two options are available with either line cord or terminal box for conduit connections.

Liquid:

Pumped liquid:	Water
Liquid temperature range:	35.6 .. 230 °F
Selected liquid temperature:	140 °F
Density:	61.35 lb/ft³

Technical:

Actual calculated flow:	10.8 US gpm
Resulting head of the pump:	8.303 ft
TF class:	110
Approvals on nameplate:	ETL, FCC

Materials:

Pump housing:	Cast iron
	EN 1561 EN-GJL-150
Impeller:	Composite

Installation:

Range of ambient temperature:	32 .. 104 °F
Maximum operating pressure:	145.04 psi
Type of connection:	GF
Pipe connection:	1 1/2
Pressure stage:	PN 10
Port-to-port length:	6 1/2 in

Electrical data:

Power input - P1:	5 .. 45 W
Main frequency:	60 Hz
Rated voltage:	1 x 115 V
Maximum current consumption:	0.1 .. 0.65 A
Enclosure class (IEC 34-5):	IP42
Insulation class (IEC 85):	F

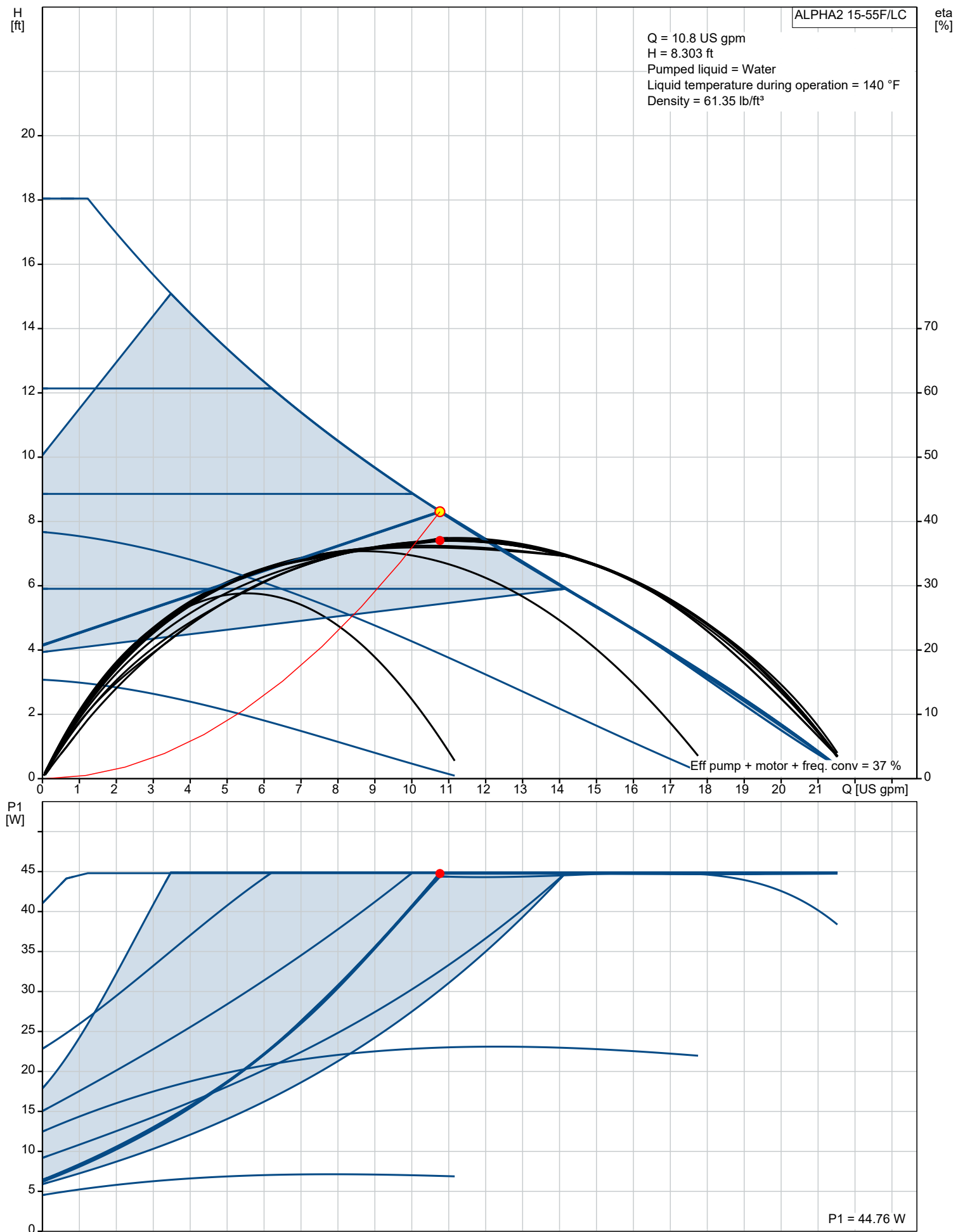


Company name: Hurley Engineering
Created by:
Phone:

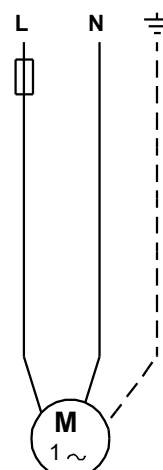
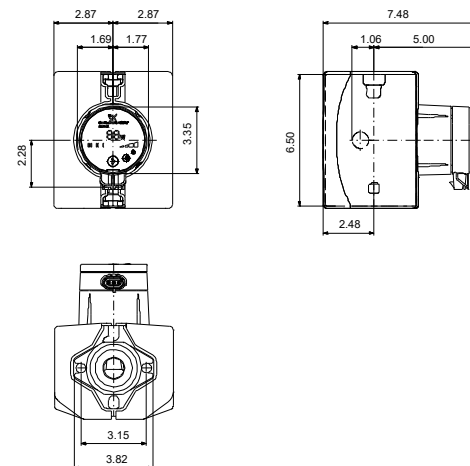
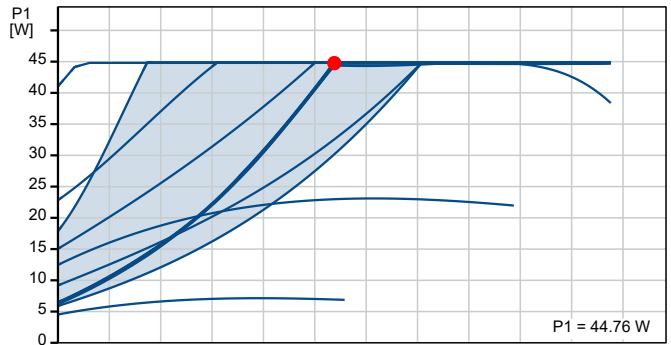
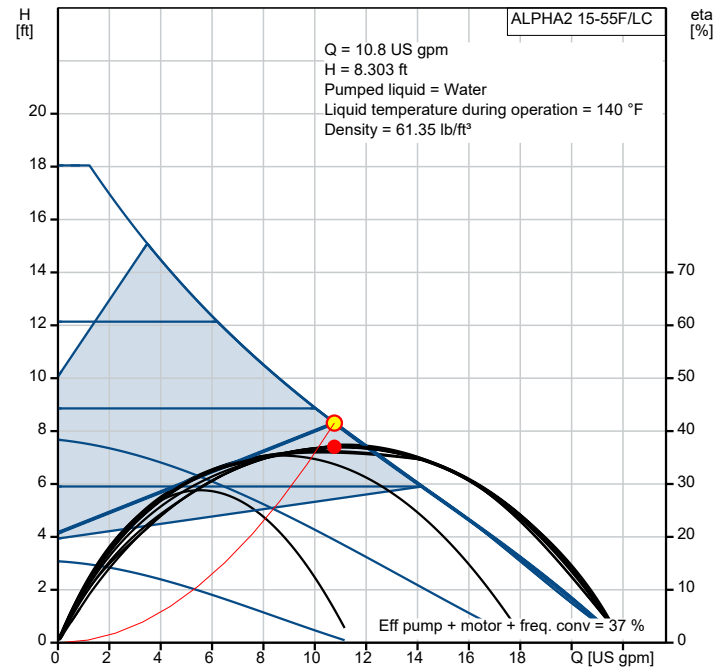
Date: 4/22/2021

Count	Description
	Others:
	Net weight: 6.91 lb
	Gross weight: 7.53 lb
	Shipping volume: 271 ft³
	Country of origin: US
	Custom tariff no.: 8413.70.2005

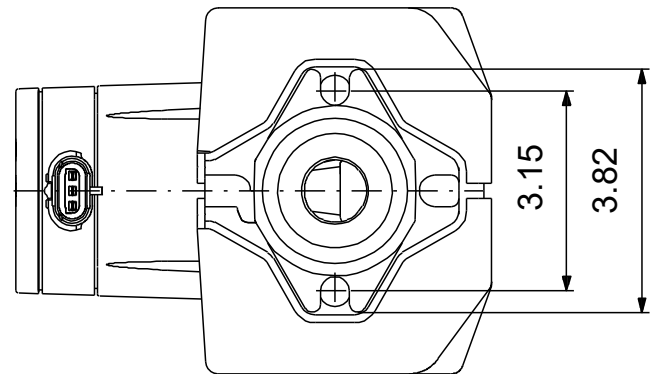
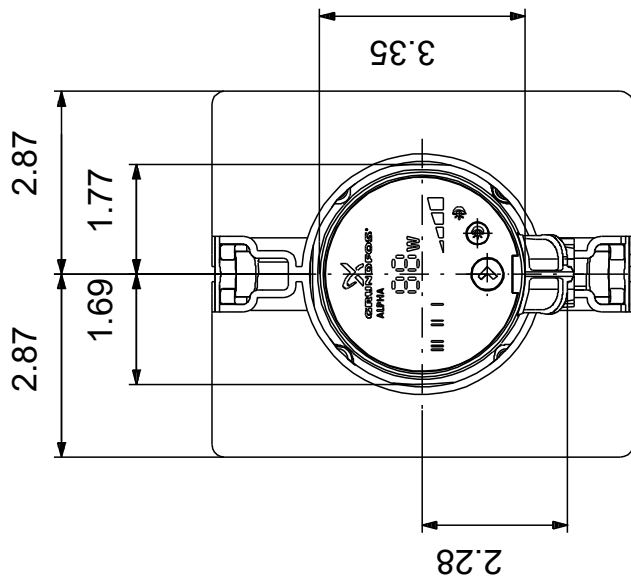
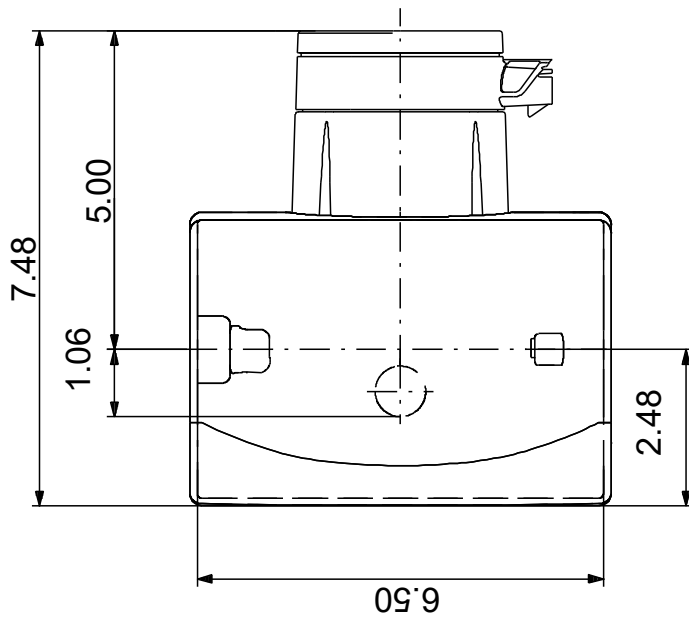
On request ALPHA2 15-55F/LC 60 Hz



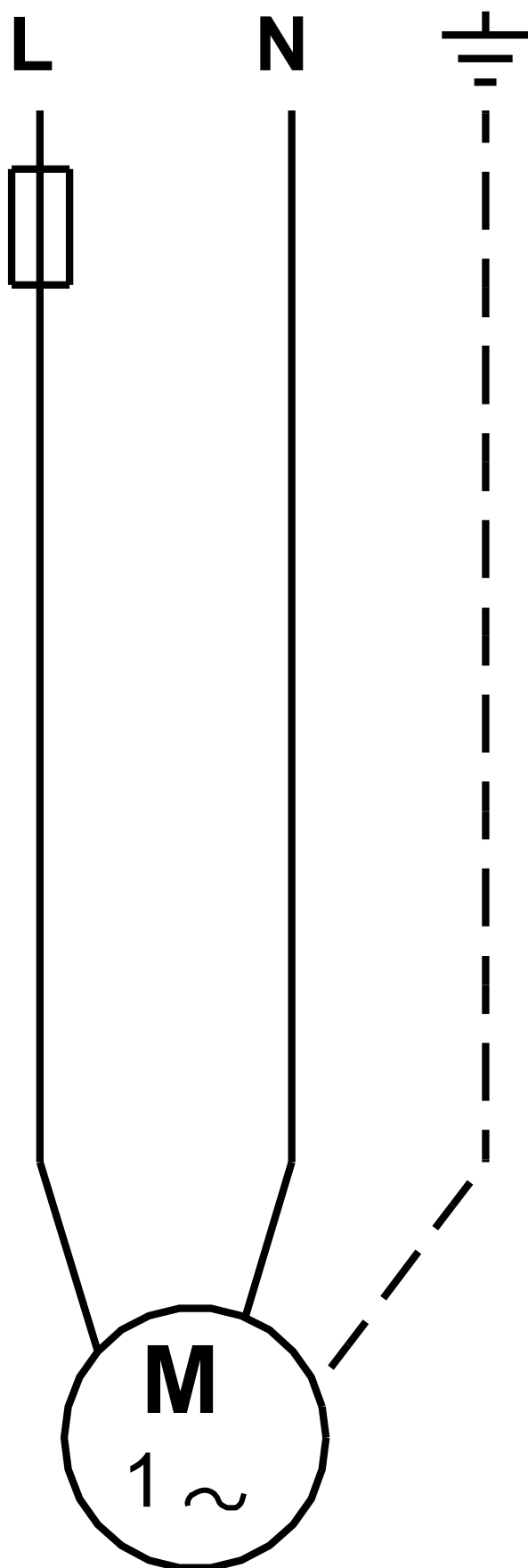
Description	Value
General information:	
Product name:	ALPHA2 15-55F/LC
Product No.:	On request
EAN:	On request
Technical:	
Actual calculated flow:	10.8 US gpm
Resulting head of the pump:	8.303 ft
Head max:	18.05 ft
TF class:	110
Approvals on nameplate:	ETL, FCC
Materials:	
Pump housing:	Cast iron
Pump housing:	EN 1561 EN-GJL-150
Impeller:	Composite
Installation:	
Range of ambient temperature:	32 .. 104 °F
Maximum operating pressure:	145.04 psi
Type of connection:	GF
Pipe connection:	1 1/2
Pressure stage:	PN 10
Port-to-port length:	6 1/2 in
Liquid:	
Pumped liquid:	Water
Liquid temperature range:	35.6 .. 230 °F
Selected liquid temperature:	140 °F
Density:	61.35 lb/ft³
Electrical data:	
Power input - P1:	5 .. 45 W
Main frequency:	60 Hz
Rated voltage:	1 x 115 V
Maximum current consumption:	0.1 .. 0.65 A
Enclosure class (IEC 34-5):	IP42
Insulation class (IEC 85):	F
Motor protection:	NONE
Thermal protec:	ELEC
Controls:	
Pos term box:	6H
Others:	
Net weight:	6.91 lb
Gross weight:	7.53 lb
Shipping volume:	271 ft³
Sales region:	USA
Country of origin:	US
Custom tariff no.:	8413.70.2005



On request ALPHA2 15-55F/LC 60 Hz



On request ALPHA2 15-55F/LC 60 Hz





Company name: Hurley Engineering
Created by:
Phone:

Date: 4/22/2021

Order Data:

Product name: ALPHA2 15-55F/LC
Amount: 1
Product No.: On request

Total: Price on request
