

Southeast Pump & Equipment, Inc.

02/01/21

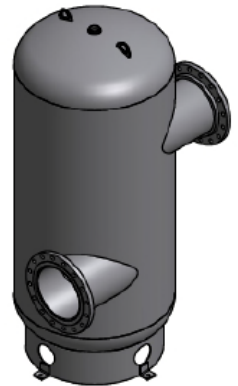
SweepCLEAR/Standard TAS/AV Pricing - 125/150#

PART NUMBER	AS tank SIZE	Tank Diameter, Inches	Tank Height, Inches	TOTAL SALE PRICE			TOTAL WEIGHT, #
TAS-STD-150#-02	2	12	19	\$1,361			51
TAS-STD-150#-02.5	2.5	12	19	\$1,520			56
TAS-STD-150#-03	3	12	19	\$1,913			66
TAS-STD-150#-04	4	14	29	\$2,617			109
TAS-STD-150#-05	5	14	29	\$3,010			133
TAS-STD-150#-06	6	20	41	\$3,756			240
TAS-STD-150#-08	8	20	41	\$5,180			338
TAS-STD-150#-10	10	30	58	\$8,084			689
TAS-STD-150#-12	12	30	58	\$10,806			811
TAS-STD-150#-14	14	36	76	\$14,012			1159
TAS-STD-150#-16	16	48	100	\$20,358			2777
TAS-STD-150#-18	18	54	116	\$27,929			3339
TAS-STD-150#-20	20	60	130	CF			4990
TAS-STD-150#-24	24	72	152	CF			8434

CF - CONSULT FACTORY

Notes:

- 1.) Pressure Drop - 2' TDH or less
- 2.) Can be piped "Inline" or Offset
- 3.) Prices Subject to Change Without Notice
- 4.) PRICE INCLUDES TAS, SWEEPCLEAR MEDIA, AUTO AIR VENT
- 5.) PRICE DOES NOT INCLUDE INSTALLATION
- 6.) ASME CODE TANKS, 125# RATING, FLANGED CONNECTION, SOLID TOP
- 7.) Manufactured in accordance with Section VIII of the ASME Boiler and Pressure Vessel Code



www.southeastpump.com
sales@southeastpump.com
 678.990.1388

www.sweepclear.com
sales@sweepclear.com
 (678) 458-6906