

**CRANE**

®

**PUMPS & SYSTEMS**

# **Weinman**

## **G & K Series - Sections 310 & 500**

January 1, 2020

### **CONFIDENTIAL PRICE LIST**

**Prices Subject to Change Without Notice.**

**All prices in U.S. Dollars, F.O.B. Piqua, Ohio.**

**All Terms & Conditions are subject to Crane Pumps & Systems Terms & Conditions.  
Please visit [www.cranepumps.com](http://www.cranepumps.com) for comprehensive details of our Terms & Conditions.**

**IMPORTANT NOTE: Please consult the catalog for important warnings, specifications and other vital information for the product(s) in which you are interested.**

**CRANE**

*A Crane Co. Company*

**PUMPS & SYSTEMS**

USA: (937) 778-8947 • Canada: (905) 457-6223 • International: (937) 615-3598

Weinman G K

310 500

Page 1

DATE	Page(s)	Change / Correction
08/01/16	All	Adjusted pricing due to new efficiency regulations - all motors over 56J are premium eff.
12/01/16	All	Price increase
01/13/17	310 Kit Page, 500 Kit Page	Corrected mechanical verbiage and choices
01/25/17	310 Kit Page	Corrected pricing for adapters
12/01/17	All	Price increase
07/23/18	All	Price increase
01/01/19	All	Price increase
02/21/19	500-5	Corrected price for 2BA-67F
07/30/19	8	Changed 6K Ductile Iron Adder to N/A
08/09/19	8-May	200V / 575V Adder Note
01/01/20	All	Price increase

**CONFIDENTIAL**

*All prices in U.S. dollars, F.O.B. Piqua, Ohio.  
Prices subject to change without notice.*

SECTION	DESCRIPTION	PAGE
	300 SERIES	4 - 11
	300 SERIES - LIQUID END KITS	12
	500 SERIES	13 - 17
	500 SERIES - LIQUID END KITS	18

**CONFIDENTIAL**

**Close Coupled End Suction Flanged Connections**

All prices in U.S. dollars, F.O.B. Piqua, Ohio.  
Prices subject to change without notice.

**Single stage, end suction centrifugal pumps with close coupled motor, flanged suction and discharge, mechanical seal (B/C/CE - Y2) and gauge connections. All motors are rated for continuous duty at maximum ambient temperature of 40° C and are premium efficient. Pumps are bronze fitted, right hand rotation.**

Service Factor: - Open Drip Proof and Totally Enclosed Fan Cooled ..... 1.15 S.F.

**Standard Construction**

Casing	Cast Iron
Impeller	Bronze
Case Wear Ring	Bronze
Shaft Sleeve	Bronze
Shaft (Motor)	Steel
Gland	Cast iron
Gland Studs and Nuts	Steel

**Flange pressure rating**

Flange size Case material	125lb Flange (Max WP-PSIG) C.I. Casing		300lb Flange (Max WP-PSIG) Ductile Casing	
	Temperature	to: 100°F	to: 250°F	to: 100°F
Pressure	175 psi	150 psi	450 psi	400 psi

- 125 lb. flanges have same drilling as 150 lb. steel flanges.
- 300 lb. flanges have same drilling as 300 lb. steel flanges.
- Standard connections are 125 lb. flanged rated at 175 psi working pressure.

**CONFIDENTIAL**

All prices in U.S. dollars, F.O.B. Piqua, Ohio.

Prices subject to change without notice.

**Single stage, end suction, close coupled centrifugal pumps with flanged suction and discharge, RH rotation, bronze fitted, with mechanical seal B/C/CE (Y2), gauge connections and JP frame motors 230/460V, 3 phase, 60 Hz**

PumpSize Model#	Curve #	Motor (hp)	RPM	List Price		Shaft Group	Weight (lb)	300# Ductile Iron List Adder
				ODP	TEFC			
1G * 1X1.25X7	1G-182	1	1750	\$2,259	\$2,574	1	100	\$475
		11/2	3500	\$2,338	\$2,624	1	115	
	1G-362	2	3500	\$2,405	\$2,737	1	125	
		3	3500	\$2,410	\$3,195	1	145	
		5	3500	\$2,566	\$3,453	1	165	
1.5G 1.5X2X7	1.5G-186	1	1750	\$2,393	\$2,432	1	110	\$533
		11/2	1750	\$2,432	\$2,755	1	125	
	1.5G-365	2	3500	\$2,541	\$2,872	1	135	
		3	3500	\$2,545	\$3,332	1	145	
		5	3500	\$2,703	\$3,588	1	165	
		7 1/2	3500	\$2,846	\$4,506	1	200	
10	3500	\$3,200	\$4,561	1	250			
1.5G1 1.5X2X7B W/DbI wear ring as std.	1.5G-181	1	1750	\$2,786	\$3,101	1	110	N/A
		1.5	3500	\$2,869	\$3,154	1	125	
	1.5G-362	2	3500	\$2,934	\$3,264	1	135	
		3	3500	\$2,938	\$3,724	1	145	
5	3500	\$3,094	\$3,982	1	165			
1.5GT * 1.5X3X7	1.5GT-187	1	1750	\$2,475	\$2,789	1	115	\$504
		1.5	1750	\$2,515	\$2,837	1	130	
		2	1750	\$2,539	\$2,885	1	140	
	1.5GT-366	3	3500	\$2,626	\$3,413	1	150	
		5	3500	\$2,783	\$3,671	1	170	
		7.5	3500	\$2,927	\$4,586	1	200	
		10	3500	\$3,282	\$4,643	1	270	
		15	3500	\$3,699	\$6,545	1	330	
1.5K 1.5X2X9	1.5K-186	1	1750	\$2,327	\$2,642	1	130	\$624
		11/2	1750	\$2,366	\$2,689	1	145	
		2	1750	\$2,390	\$2,738	1	155	
		3	1750	\$2,463	\$3,162	1	165	
		5	1750	\$2,581	\$3,362	1	195	
	1.5K-365	7 1/2	3500	\$2,779	\$4,438	1	220	
		10	3500	\$3,134	\$4,494	1	270	
		15	3500	\$3,551	\$6,397	1	330	
		20	3500	\$3,920	\$6,609	2	400	
		25	3500	\$4,810	\$6,757	2	450	
1.5K1 1.5x2x9B	1.5K-187	1	1750	\$2,327	\$2,642	1	130	\$624
		11/2	1750	\$2,366	\$2,689	1	145	
		2	1750	\$2,390	\$2,738	1	155	
		3	1750	\$2,463	\$3,162	1	165	
	1.5K-366	5	3500	\$2,636	\$3,523	1	200	
		7 1/2	3500	\$2,779	\$4,438	1	220	
		10	3500	\$3,134	\$4,494	1	270	
		15	3500	\$3,551	\$6,397	1	330	
		20	3500	\$3,935	\$6,628	2	400	

\* - No double wear ring option

	Shaft Group 1	Shaft Group 2
200V / 575V Motor Adder	\$130	\$257

## CONFIDENTIAL

All prices in U.S. dollars, F.O.B. Piqua, Ohio.

Prices subject to change without notice.

**Single stage, end suction, close coupled centrifugal pumps with flanged suction and discharge, RH rotation, bronze fitted, with mechanical seal B/C/CE (Y2), gauge connections and JP frame motors 230/460V, 3 phase, 60 Hz**

PumpSize Model#	Curve #	Motor (hp)	RPM	List Price		Shaft Group	Weight (lb)	300# Ductile Iron List Adder
				ODP	TEFC			
1.5KH 1.5x2x12	1.5KH-182	3	1750	\$3,814	\$4,511	1	195	\$741
		5	1750	\$3,930	\$4,712	1	225	
		7 1/2	1750	\$4,338	\$4,761	1	250	
		10	1750	\$4,496	\$5,132	2	300	
2G 2X3X7	2G-181	1	1750	\$2,539	\$2,853	1	140	\$624
		1 1/2	1750	\$2,578	\$2,900	1	155	
		2	1750	\$2,602	\$2,948	1	165	
	2G-361	2	3500	\$2,685	\$3,018	1	155	\$624
		3	3500	\$2,690	\$3,477	1	160	
		5	3500	\$2,847	\$3,734	1	185	
		7 1/2	3500	\$2,991	\$4,652	1	220	
		10	3500	\$3,345	\$4,707	1	270	
2K 2X3X9	2K-181	1.5	1750	\$2,423	\$2,745	1	175	\$685
		2	1750	\$2,448	\$2,795	1	185	
		3	1750	\$2,521	\$3,219	1	205	
		5	1750	\$2,639	\$3,418	1	240	
	2K-361	15	3500	\$3,607	\$6,452	1	345	
		20	3500	\$3,975	\$6,665	2	400	
		25	3500	\$4,866	\$6,815	2	465	
2.5G 2.5X3X7	2.5G-181	1	1750	\$3,099	\$3,414	1	160	\$664
		1 1/2	1750	\$3,137	\$3,461	1	175	
		2	1750	\$3,162	\$3,509	1	186	
		3	1750	\$3,235	\$3,933	1	205	
	2.5G-361	3	3500	\$3,250	\$4,038	1	185	
		5	3500	\$3,408	\$4,296	1	205	
		7 1/2	3500	\$3,551	\$5,210	1	240	
		10	3500	\$3,906	\$5,267	1	290	
		15	3500	\$4,324	\$7,168	1	355	
		20	3500	\$4,691	\$7,382	2	420	
		25	3500	\$5,582	\$7,530	2	485	
2.5K 2.5X3X9	2.5K-181	2	1750	\$3,893	\$4,240	1	205	\$768
		3	1750	\$3,967	\$4,664	1	225	
		5	1750	\$4,083	\$4,864	1	240	
		7 1/2	1750	\$4,490	\$4,913	1	280	
	2.5K-361	15	3500	\$5,053	\$7,899	1	375	
		20	3500	\$5,421	\$8,111	2	440	
		25	3500	\$6,312	\$8,259	2	485	
		30	3500	\$7,079	\$9,508	2	550	

\* - No double wear ring option

	Shaft Group 1	Shaft Group 2
200V / 575V Motor Adder	\$130	\$257

## CONFIDENTIAL

All prices in U.S. dollars, F.O.B. Piqua, Ohio.

Prices subject to change without notice.

**Single stage, end suction, close coupled centrifugal pumps with flanged suction and discharge, RH rotation, bronze fitted, with mechanical seal B/C/CE (Y2), gauge connections and JP frame motors 230/460V, 3 phase, 60 Hz**

Pump Size (in)	Curve #	Motor (hp)	RPM	List Price		Shaft Group	Weight (lb)	300# Ductile Iron List Adder	
				ODP	TEFC				
2.5KH 2.5X3X12	2.5KH-182	7 1/2	1750	\$4,237	\$4,660	2	320	\$925	
		10	1750	\$4,397	\$5,032	2	415		
		15	1750	\$5,069	\$6,777	2	480		
2.5KH1 2.5X3X12B	2.5KH-181	7 1/2	1750	\$4,237	\$4,660	2	320		
		10	1750	\$4,397	\$5,032	2	415		
		15	1750	\$5,069	\$6,777	2	480		
3G 3X4X7	3G-181	1	1750	\$3,083	\$3,396	1	180		\$768
		1 1/2	1750	\$3,122	\$3,444	1	195		
		2	1750	\$3,147	\$3,491	1	205		
		3	1750	\$3,220	\$3,919	1	225		
		5	1750	\$3,338	\$4,118	1	245		
	3G-361	5	3500	\$3,390	\$4,278	1	225		
		7 1/2	3500	\$3,535	\$5,194	1	260		
		10	3500	\$3,890	\$5,251	1	310		
		15	3500	\$4,307	\$7,152	1	375		
		20	3500	\$4,827	\$7,517	2	440		
		25	3500	\$5,717	\$7,664	2	505		
		30	3500	\$6,484	\$8,911	2	575		
3K 3X4X9B	3K-182	3	1750	\$3,361	\$4,059	1	245	\$803	
		5	1750	\$3,480	\$4,261	1	265		
		7 1/2	1750	\$3,884	\$4,308	1	300		
		10	1750	\$4,412	\$5,046	2	330		
		15	1750	\$5,082	\$6,792	2	395		
3K1 3X4X9	3K-361	20	3500	\$5,182	\$7,873	2	460		
		25	3500	\$6,072	\$8,020	2	525		
		30	3500	\$6,841	\$9,270	2	595		
		40	3500	\$7,905	\$10,535	2	665		
3KH 3X4X12B	3KH-183	7 1/2	1750	\$3,998	\$4,422	2	330		\$1,079
		10	1750	\$4,158	\$4,792	2	360		
		15	1750	\$4,830	\$6,539	2	425		
		20	1750	\$5,148	\$6,763	2	490		
		25	1750	\$6,221	\$7,412	2	555		
3KH1 * 3X4X12	3KH-181	7 1/2	1750	\$3,998	\$4,422	2	330		
		10	1750	\$4,158	\$4,792	2	360		
		15	1750	\$4,830	\$6,539	2	425		
		20	1750	\$5,148	\$6,763	2	490		
		25	1750	\$6,221	\$7,412	2	555		

\* - No double wear ring option

	Shaft Group 1	Shaft Group 2
200V / 575V Motor Adder	\$130	\$257

### CONFIDENTIAL

All prices in U.S. dollars, F.O.B. Piqua, Ohio.

**Single stage, end suction, close coupled centrifugal pumps with flanged suction and discharge, RH rotation, bronze fitted, with mechanical seal B/C/CE (Y2), gauge connections and JP frame motors 230/460V, 3 phase, 60 Hz**

PumpSize Model#	Curve #	Motor (hp)	RPM	List Price		Shaft Group	Weight (lb)	300# Ductile Iron List Adder
				ODP	TEFC			
4G 4X5X7B	4G-182	2	1750	\$3,329	\$3,676	1	250	\$914
		3	1750	\$3,405	\$4,102	1	265	
		5	1750	\$3,521	\$4,302	1	285	
		7 1/2	1750	\$3,927	\$4,349	1	320	
4G1 4X5X7	4G-362	15	3500	\$4,694	\$7,538	2	415	\$914
		20	3500	\$5,062	\$7,752	2	480	
		25	3500	\$5,954	\$7,900	2	545	
		30	3500	\$6,720	\$9,148	2	615	
		40	3500	\$7,785	\$10,413	2	685	
4GL 4X5X7L	4GL-181	1	1750	\$3,266	\$3,581	1	210	\$925
		1 1/2	1750	\$3,305	\$3,629	1	225	
		2	1750	\$3,329	\$3,676	1	245	
		3	1750	\$3,405	\$4,102	1	265	
	4GL-361	7 1/2	3500	\$3,720	\$5,378	1	320	
		10	3500	\$4,074	\$5,433	1	350	
		15	3500	\$4,491	\$7,335	1	415	
		20	3500	\$5,062	\$7,752	2	480	
4K * 4X5X12	4K-181	10	1750	\$4,845	\$5,479	2	390	\$1,188
		15	1750	\$5,517	\$7,224	2	455	
		20	1750	\$5,836	\$7,450	2	520	
		25	1750	\$6,909	\$8,100	2	585	
		30	1750	\$7,965	\$9,212	2	655	
		40	1750	\$8,104	\$10,655	2	725	
4KL 4X5X9	4KL-181	7 1/2	1750	\$5,052	\$5,476	2	360	\$1,058
		10	1750	\$5,212	\$5,846	2	390	
		15	1750	\$5,884	\$7,464	2	455	
		20	1750	\$6,201	\$7,816	2	520	
4KS * 4X5X13	4KS-181	30	1750	\$7,965	\$9,212	2	665	\$1,243
		40	1750	\$8,104	\$10,655	2	735	
		50	1750	\$9,449	\$11,935	2	855	
5G 5X6X9	5G-181	7 1/2	1750	\$5,452	\$5,875	2	460	N/A
		10	1750	\$5,613	\$6,248	2	490	
		15	1750	\$6,284	\$7,994	2	555	
		20	1750	\$6,601	\$8,217	2	620	
		25	1750	\$7,676	\$8,865	2	685	
6G * 6X8X9	6G-181	15	1750	\$6,503	\$8,211	2	655	N/A
		20	1750	\$6,821	\$8,435	2	720	
		25	1750	\$7,894	\$9,085	2	785	
		30	1750	\$8,951	\$10,198	2	855	
		40	1750	\$9,089	\$11,641	2	925	
6K * 6X8X12	6K-182	20	1750	\$7,168	\$8,782	2	770	N/A
		25	1750	\$8,241	\$9,433	2	835	
		30	1750	\$9,298	\$10,546	2	905	
		40	1750	\$9,438	\$11,990	2	975	
		50	1750	\$10,782	\$13,270	2	1100	

\* - No double wear ring option available

	Shaft Group 1	Shaft Group 2
<b>200V / 575V Motor Adder</b>	<b>\$130</b>	<b>\$257</b>



### CONFIDENTIAL

All prices in U.S. dollars, F.O.B. Piqua, Ohio.

Prices subject to change without notice.

### Mechanical Seals

Single Unbalanced Seals		Shaft Group 1		Shaft Group 2	
		Type	List Adder	Type	List Adder
Standard Water 150 Max. psi - 180°F Max. Temperature	Y2	21	Standard	1	Standard
Hot Water 150 Max. psi - 250°F Max. Temperature	Y6	21	No charge when specified	1	No charge when specified
Standard Water 150 Max. psi - 180°F Max. Temperature	Y34	21	\$88	1	\$116
Standard Water 150 Max. psi - 250°F Max. Temperature	Y25	21	\$88	1	\$627
Standard Water 150 Max. psi - 180°F Max. Temperature	Y10	21	\$831	1	\$1,004
Standard Water 150 Max. psi - 250°F Max. Temperature	Y17	21	\$856	1	\$1,027
- When a ductile iron casing option is used for pressures above 150 psi, you must use a balanced mechanical seal from the options below					
Single Balanced Seals		Shaft Group 1		Shaft Group 2	
		Type	List Adder	Type	List Adder
High Pressure 250 Max. psi - 180°F Max. Temperature	Y2	1B	\$880	1B	\$927
High Pressure 250 Max. psi - 250°F Max. Temperature	Y6	1B	\$1,028	1B	\$1,090
High Pressure 250 Max. psi - 180°F Max. Temperature	Y34	1B	\$904	1B	\$952
High Pressure 250 Max. psi - 250°F Max. Temperature	Y25	1B	\$998	1B	\$1,055
High Pressure Application 400 Max. psi - 180°F Max. Temperature	Y10	1B	\$1,256	1B	\$2,464
High Pressure - High Temperature 400 Max. psi - 250°F Max. Temperature	Y17	1B	\$1,429	1B	\$3,408
<b>Kynar Separator Kit - Unmounted, PN AS-DK4-KIT</b>			\$1,001		
Weinman Code	Elastomer Parts	Rotating Face	Metal Parts	Seal Seat	
Y2 - B/C/CE	Buna	Carbon	Stainless Steel	Ceramic	
Y34 - B/C/NR	Buna	Carbon	Stainless Steel	Ni-Resist	
Y6 - V/C/NR	Viton	Carbon	Stainless Steel	Ni-Resist	
Y25 - V/C/CE	Viton	Carbon	Stainless Steel	Ceramic	
Y10 - B/C/TC	Buna	Carbon	Stainless Steel	Tungsten Carbide	
Y17 - V/C/TC	Viton	Carbon	Stainless Steel	Tungsten Carbide	
B =	Buna	C =	Carbon	NR =	Ni-Resist
V =	Viton	CE =	Ceramic	TC =	Tungsten Carbide

**CONFIDENTIAL**

**Close Coupled End Suction Flanged Connections**

All prices in U.S. dollars, F.O.B. Piqua, Ohio.

Prices subject to change without notice.

**List Adder for Single Phase Motors**

**NEMA JP, TCZ Open drip proof Single Phase S.F. = 1.15**

Motor (hp)	Frame Size	RPM	Efficiency (nominal)	Power Factor	List Adder
1	143JP	1750	-	-	\$372
1 1/2	143JP	3500	-	-	\$448
	145JP	1750	-	-	\$680
2	145JP	3500	-	-	\$532
	182JP	1750	72.5	71.6	\$1,114
3	182JP	3500	72.2	84.0	\$1,150
	184JP	1750	77.0	78.0	\$1,209
5	184JP	3500	75.0	80.0	\$1,155
	213JP	1750	73.0	76.0	\$1,442
7 1/2	213TCZ	3500	77.0	81.0	\$1,279
	215TCZ	1750	85.0	89.0	\$1,838
10	215TCZ	3500	83.0	86.0	\$1,453

- Specify operating voltage required.

- 1hp - 3hp Motors 115/230v.

- 5hp - 10hp Motors 230v only.

<b>Double Bronze Wear Rings</b>	
Shaft Group 1	\$393
Shaft Group 2	\$558

Single bronze case wear ring is standard

<b>Shaft Sleeves</b>			
<b>416 Stainless Steel Sleeve</b>		<b>316 Stainless Steel Sleeve</b>	
Shaft Group 1	\$390	Shaft Group 1	\$415
Shaft Group 2	\$717	Shaft Group 2	\$740

**Certified Performance Tests (Must Be Ordered with Pump)**

- All Section 310 pumps are hydrostatic tested to 1 1/2 times the discharge pressure as standard

- Certified Performance Test with certified curve: See Test Section.

### CONFIDENTIAL

All prices in U.S. dollars, F.O.B. Piqua, Ohio.  
Prices subject to change without notice.

## Liquid End Kits

For a close coupled unit you need:

Liquid end, motor adapter, mechanical seal, shaft sleeve and a motor from the JP frame motor pages.

Pump Model Reference	Kit P/N	Shaft Group	Liquid End List Each
1G	1G3SWE	1	\$ 1,282
1.5G	1.5G3SWE	1	\$ 1,325
1.5G1	1.5G3SWE2	1	\$ 1,325
1.5GT	1.5GT3SWE	1	\$ 1,597
1.5K	1.5K3SWE	1	\$ 1,754
1.5K	1.5K4SWE	2	\$ 2,241
1.5KH	1.5KH3SWE	1	\$ 2,219
1.5KH	1.5KH4SWE	2	\$ 2,211
2G	2G3SWE	1	\$ 1,479
2K	2K3SWE	1	\$ 1,781
2K	2K4SWE	2	\$ 1,825
2.5G	2.5G3SWE	1	\$ 1,739
2.5G	2.5G4SWE	2	\$ 1,943
2.5K	2.5K3SWE	1	\$ 1,903
2.5K	2.5K4SWE	2	\$ 1,916
2.5KH	2.5KH4SWE	2	\$ 2,654

Pump Model Reference	Kit P/N	Shaft Group	Liquid End List Each
2.5KH1	2.5KH4SWE2	2	\$ 2,654
3G	3G3SWE	1	\$ 1,823
3G	3G4SWE	2	\$ 1,855
3K	3K3SWE	1	\$ 2,094
3K	3K4SWE	2	\$ 2,227
3KH1	3KH4SWE2	2	\$ 3,653
4G	4G3SWE	1	\$ 2,219
4G	4G4SWE	2	\$ 2,344
4G1	4G4SWE2	2	\$ 2,504
4GL	4GL3SWE	1	\$ 2,504
4GL	4GL4SWE	2	\$ 2,535
4K	4K4SWE	2	\$ 2,438
4KL	4KL4SWE	2	\$ 2,670
5G	5G4SWE	2	\$ 3,007
6G	6G4SWE	2	\$ 3,416
6K	6K4SWE	2	\$ 4,608

### Liquid ends contain the following components:

Cast iron casing, bronze impeller, case gasket, bronze case wear ring, and neoprene deflector, spacer sleeve, ball valve, copper tubing, hardware - **Pump multiplier applies to liquid ends**

Cast Iron Motor Adapter	Frame Size	List Price	Shaft Group	Sleeve Size	Sleeve and Seal P/N	List Price
C5522-A2	143JP-184JP	\$525	1	1.25" Seal	Q26-395-Yxx	See below
C5523-A2	213-215TCZ	\$525	1	1.25" Sleeve	A5204-C9	\$96
C6385-1-A2	213JP-256JP	\$604	2	1.75" Seal	Q26-217-Yxx	See below
C6679-A2	284-326JP	\$1,289	2	1.75" Sleeve	H1993-1-C9	\$156

**Mechanical seals, adapters and sleeves would be added from distributor's stock,  
Use parts discount of .60**

**Yxx = Choose the required choices below to finish the seal PN that is required, ie:**

**Q26-395-Y25 is the finished PN for a Viton/Carbon/Ceramic seal - Use parts price pages or CP&S Connect for all parts pricing**

Y2 - B/C/CE	Buna	Carbon	Stainless Steel	Ceramic
Y34 -B/C/NR	Buna	Carbon	Stainless Steel	Ni-Resist
Y6 - V/C/NR	Viton	Carbon	Stainless Steel	Ni-Resist
Y25 - V/C/CE	Viton	Carbon	Stainless Steel	Ceramic
Y10 - B/C/TC	Buna	Carbon	Stainless Steel	Tungsten Carbide
Y17 - V/C/TC	Viton	Carbon	Stainless Steel	Tungsten Carbide

#### CONFIDENTIAL

All prices in U.S. dollars, F.O.B. Piqua, Ohio.

Prices subject to change without notice.

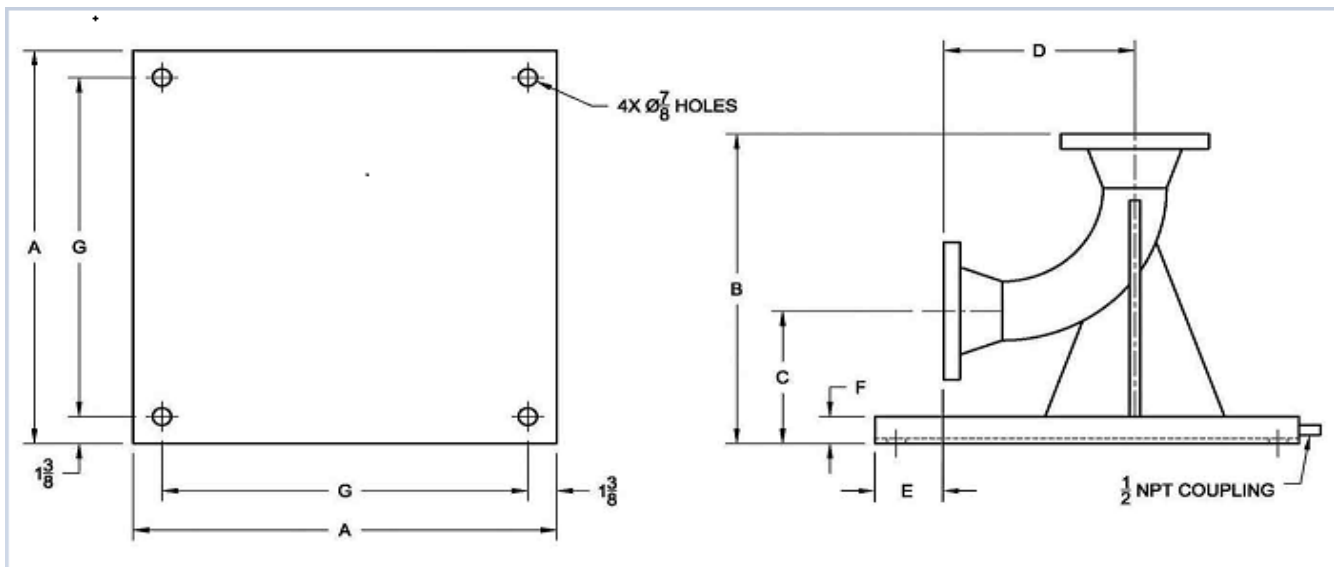
#### Vertical Pump Support - Suction Elbow

Suction Size (in)	Part Number	Flange (psi)	Price	Weight (lb)
3	33137	150	\$860	70
4	33138	150	\$1,104	109
5	33139	150	\$1,393	154
6	33140	150	\$1,561	205
8	33141	150	\$5,278	250
3	33142	300	\$1,051	85
4	33143	300	\$1,283	120
5	33144	300	\$1,398	175
6	33145	300	\$1,727	225
8	33146	300	\$6,343	275

- Nut, bolt and gasket sets- not included.

- Export Boxing - Refer to factory

Part No.	Size	A	B	C	D	E	F	G
33137	3	18	13.125	5.875	7.25	1.75	1.375	15.25
33138	4	20	15.75	6.75	9	1	1.375	17.25
33139	5	24	18.5	7.5	11	1	1.5	21.25
33140	6	28	20.75	8.25	12.5	1.5	1.5	25.25
33141	8	34	25.5	9.5	16	1	1.5	31.25
33142	3	18	13.125	5.875	7.625	1.375	1.333	15.25
33143	4	20	15.75	6.75	9.375	.625	1.25	17.25
33144	5	24	18.5	7.5	11.375	.625	1.20	21.25
33145	6	28	20.75	8.25	12.875	1.125	1.167	25.25
33146	8	34	20.75	9.5	16.375	.625	1.143	31.25



## CONFIDENTIAL

## Frame Mounted End Suction

All prices in U.S. dollars, F.O.B. Piqua, Ohio.  
Prices subject to change without notice.

**Single stage, end suction, frame mounted centrifugal pumps with flanged suction and discharge, RH rotation, bronze fitted, mechanical seal B/C/CE (Y2) and gauge connection.**

### Standard Construction

Casing	Cast Iron
Impeller	Bronze
Case Wear Ring	Bronze
Shaft Sleeve	Bronze
Shaft	Steel (SAE 1045)
Seal Gland	Cast Iron
Gland Screws	Steel
Base Plate	Fabricated Steel

### Horsepower and Frame Size Limitations

Bearing Frame	1750 RPM	3500 RPM
2A	20 HP (256T)	40 HP (286TS)
4A	60 HP (364TS)	60 HP (364TS)

### Flange pressure rating

Flange size Case material	125lb Flange (Max WP-PSIG) C.I. Casing		300lb Flange (Max WP-PSIG) Ductile Casing	
Temperature	to: 100°F	to: 250°F	to: 100°F	to: 250°F
Pressure	175 psi	150 psi	450 psi	400 psi

- 125 lb. flanges have same drilling as 150 lb. steel flanges.
- 300 lb. flanges have same drilling as 300 lb. steel flanges.
- Standard connections are 125 lb. flanged rated at 175 psi working pressure.

**CONFIDENTIAL**

**Frame Mounted End Suction**

All prices in U.S. dollars, F.O.B. Piqua, Ohio.  
Prices subject to change without notice.

**Single stage, end suction, frame mounted centrifugal pumps with flanged suction and discharge, RH rotation, bronze fitted, mechanical seal B/C/CE (Y2) and gauge connections on suction and discharge flange**

Pump Size Model #	RPM	Curve #	Bearing Frame Size	Pump Only List Price	316SS Sleeve List Adder	416 SS Sleeve List Adder	416 SS Shaft List Adder	Bz Double Wear Ring List Adder	300# Ductile Iron List Adder	Weight (lb)
1G 1x1.25x7	1750	1G-182	2A	\$1,941	\$415	\$390	\$533	N/A	\$475	80
	3500	1G-362	2A							
1.5G 1.5x2x7	1750	1.5G-186	2A	\$1,979	\$415	\$390	\$533	\$393	\$533	90
	3500	1.5G-365	2A							
1.5G1 1.5X2X7B	1750	1.5G-181	2A	\$1,979	\$415	\$390	\$533	DBL Wear Ring is Std	N/A	90
	3500	1.5G-362	2A							
1.5GT 1.5x3x7	1750	1.5G-187	2A	\$2,412	\$415	\$390	\$533	N/A	\$504	100
	3500	1.5G-366	2A							
1.5K 1.5x2x9	1750	1.5K-186	2A	\$2,373	\$415	\$390	\$533	\$393	\$624	120
	3500	1.5K-365	2A							
	1750	1.5K-186	4A	\$2,831	\$740	\$717	\$769	\$558	\$624	170
	3500	1.5K-365	4A							
1.5K1 1.5X2X9B	1750	1.5K-187	2A	\$2,373	\$415	\$390	\$533	\$393	\$624	120
	3500	1.5K-366	2A							
	1750	1.5K-187	4A	\$2,831	\$740	\$717	\$769	\$558	\$624	170
	3500	1.5K-366	4A							
1.5KH 1.5x2x12	1750	1.5KH-182	2A	\$2,905	\$415	\$390	\$533	\$393	\$741	180
	3500	1.5KH-182	4A							
2G 2x3x7	1750	2G-181	2A	\$2,118	\$415	\$390	\$533	\$393	\$624	110
	3500	2G-361	2A							
2K 2x3x9	1750	2K-181	2A	\$2,438	\$415	\$390	\$533	\$393	\$685	160
	3500	2K-361	2A							
	1750	2K-181	4A	\$2,930	\$740	\$717	\$769	\$558	\$685	210
	3500	2K-361	4A							
2.5G 2.5x3x7	1750	2.5G-181	2A	\$2,360	\$415	\$390	\$533	\$393	\$664	120
	3500	2.5G-361	2A							
	1750	2.5G-181	4A	\$2,828	\$740	\$717	\$769	\$558	\$664	170
	3500	2.5G-361	4A							
2.5K 2.5x3x9	1750	2.5K-181	2A	\$2,508	\$415	\$390	\$533	\$393	\$768	160
	3500	2.5K-361	2A							
	1750	2.5K-181	4A	\$3,057	\$740	\$717	\$769	\$558	\$768	210
	3500	2.5K-361	4A							
2.5KH 2.5x3x12	1750	2.5KH-182	4A	\$3,735	\$740	\$717	\$769	\$558	\$925	320
2.5KH1 2.5x3x12B	1750	2.5KH-181	4A	\$3,735	\$740	\$717	\$769	\$558	\$925	320

**CONFIDENTIAL**

**Frame Mounted End Suction**

All prices in U.S. dollars, F.O.B. Piqua, Ohio.  
Prices subject to change without notice.

**Single stage, end suction, frame mounted centrifugal pumps with flanged suction and discharge, RH rotation, bronze fitted, mechanical seal B/C/CE (Y2) and gauge connections on suction and discharge flange**

Pump Size Model #	RPM	Curve #	Bearing Frame Size	Pump Only List Price	316SS Sleeve List Adder	416 SS Sleeve List Adder	416 SS Shaft List Adder	Bz Double Wear Ring List Adder	300# Ductile Iron List Adder	Weight (lb)
3G 3x4x7	1750	3G-181	2A	\$2,468	\$415	\$390	\$533	\$393	\$768	150
	3500	3G-361	2A							
3K 3x4x9B	1750	3K-182	4A	\$2,970	\$740	\$717	\$769	\$558	\$768	200
			4A							
3K1 3x4x9	3500	3K-361	2A	\$2,690	\$415	\$390	\$533	\$393	\$803	180
			4A	\$3,372	\$740	\$717	\$769	\$558	\$803	230
3KH 3x4x12B	1750	3KH-183	4A	\$4,657	\$740	\$717	\$769	\$558	\$1,079	280
3KH1 3x4x12	1750	3KH-181	4A	\$4,657	\$740	\$717	\$769	N/A	\$1,079	280
4G 4x5x7B	1750	4G-182	2A	\$2,802	\$415	\$415	\$533	N/A	N/A	180
	1750	4G-182	4A	\$3,180	\$740	\$717	\$769	N/A	N/A	230
4G1 4x5x7	3500	4G-362	2A	\$2,802	\$415	\$390	\$533	\$393	\$914	180
	3500	4G-362	4A	\$3,180	\$740	\$717	\$769	\$558	\$914	230
4GL 4x5x7L	1750	4GL-181	2A	\$2,859	\$415	\$390	\$533	\$393	\$925	180
	3500	4GL-361	2A							
4K 4x5x12	1750	4K-181	4A	\$3,633	\$740	\$717	\$769	\$558	\$925	230
			4A							
4K 4x5x12	1750	4K-181	4A	\$4,705	\$740	\$717	\$769	\$558	\$1,188	280
4KL 4x5x9	1750	4KL-181	4A	\$3,910	\$740	\$717	\$769	\$558	\$1,058	260
4KS 4x5x13	1750	4KS-181	4A	\$5,245	\$740	\$717	\$769	N/A	\$1,243	285
5G 5x6x9	1750	5G-181	4A	\$4,259	\$740	\$717	\$769	N/A	N/A	320
6G 6x8x9	1750	6G-181	4A	\$4,671	\$740	\$717	\$769	N/A	N/A	380
6K 6x8x12	1750	6K-182	4A	\$5,594	\$740	\$717	\$769	N/A	N/A	440

<b>Baseplate, Coupling, Standard Coupling Guard List Price</b>					
Motor Frame	2A Frame List Price	4A Frame List Price	Drip Pan Adder	OSHA Guard List Adder	Weight (lb)
56	\$460	N/A	\$273	\$464	70
143T-145T	\$460	N/A	\$273	\$464	80
182T-184T	\$505	\$636	\$273	\$464	85
213T-215T	\$551	\$675	\$273	\$464	95
254T-256T	\$749	\$911	\$273	\$464	100
284T-286T	\$768	\$991	\$273	\$464	130
324TS-326T	N/A	\$1,148	\$273	\$536	160
364TS-365T	N/A	\$1,152	\$273	\$536	200



### CONFIDENTIAL

All prices in U.S. dollars, F.O.B. Piqua, Ohio.

Prices subject to change without notice.

<b>Mechanical Seals</b>					
<b>Single Unbalanced Seals</b>		<b>Shaft Group 1 - 2A</b>		<b>Shaft Group 2 - 4A</b>	
		<b>Type</b>	<b>List Adder</b>	<b>Type</b>	<b>List Adder</b>
Standard Water 150 Max. psi - 180°F Max. Temperature	Y2	21	Standard	1	Standard
Hot Water 150 Max. psi - 250°F Max. Temperature	Y6	21	No charge when specified	1	No charge when specified
Standard Water 150 Max. psi - 180°F Max. Temperature	Y34	21	\$88	1	\$116
Standard Water 150 Max. psi - 250°F Max. Temperature	Y25	21	\$88	1	\$627
Standard Water 150 Max. psi - 180°F Max. Temperature	Y10	21	\$831	1	\$1,004
Standard Water 150 Max. psi - 250°F Max. Temperature	Y17	21	\$856	1	\$1,027
<b>- When a ductile iron casing option is used for pressures above 150 psi, you must use a balanced mechanical seal from the options below</b>					
<b>Single Balanced Seals</b>		<b>Shaft Group 1 - 2A</b>		<b>Shaft Group 2 - 4A</b>	
		<b>Type</b>	<b>List Adder</b>	<b>Type</b>	<b>List Adder</b>
High Pressure 250 Max. psi - 180°F Max. Temperature	Y2	1B	\$880	1B	\$927
High Pressure 250 Max. psi - 250°F Max. Temperature	Y6	1B	\$1,028	1B	\$1,090
High Pressure 250 Max. psi - 180°F Max. Temperature	Y34	1B	\$904	1B	\$952
High Pressure 250 Max. psi - 250°F Max. Temperature	Y25	1B	\$998	1B	\$1,055
High Pressure Application 400 Max. psi - 180°F Max. Temperature	Y10	1B	\$1,256	1B	\$2,464
High Pressure - High Temperature 400 Max. psi - 250°F Max. Temperature	Y17	1B	\$1,429	1B	\$3,408
<b>Kynar Separator Kit - Unmounted, PN AS-DK4-KIT</b>			\$1,001		
<b>Explanation of Seal Codes</b>					
<b>Weinman Code</b>	<b>Elastomer Parts</b>	<b>Rotating Face</b>	<b>Metal Parts</b>	<b>Seal Seat</b>	
Y34 - B/C/NR	Buna	Carbon	Stainless Steel	Ni-Resist	
Y6 - V/C/NR	Viton	Carbon	Stainless Steel	Ni-Resist	
Y2 - B/C/CE	Buna	Carbon	Stainless Steel	Ceramic	
Y25 - V/C/CE	Viton	Carbon	Stainless Steel	Ceramic	
Y10 - B/C/TC	Buna	Carbon	Stainless Steel	Tungsten Carbide	
Y17 - V/C/TC	Viton	Carbon	Stainless Steel	Tungsten Carbide	
B =	Buna	C =	Carbon	NR =	Ni-Resist
V =	Viton	CE =	Ceramic	TC =	Tungsten Carbide



**CONFIDENTIAL**

All prices in U.S. dollars, F.O.B. Piqua, Ohio.  
Prices subject to change without notice.

## Liquid End Kits

For a frame mounted unit you need:  
Liquid end, bearing frame and a mechanical seal

Pump Model Reference	Kit P/N	Liquid End List Price
1G-2A	1G3SWE	\$ 1,282
1.5G-2A	1.5G3SWE	\$ 1,325
1.5G1-2A	1.5G3SWE2	\$ 1,325
1.5GT-2A	1.5GT3SWE	\$ 1,597
1.5K-2A	1.5K3SWE	\$ 1,754
1.5K1-2A	1.5K3SWE2	\$ 2,250
1.5K-4A	1.5K4SWE	\$ 2,241
1.5KH-2A	1.5KH3SWE	\$ 2,219
1.5KH-4A	1.5KH4SWE	\$ 2,211
2G-2A	2G3SWE	\$ 1,479
2K-2A	2K3SWE	\$ 1,781
2K-4A	2K4SWE	\$ 1,825
2.5G-2A	2.5G3SWE	\$ 1,739
2.5G-4A	2.5G4SWE	\$ 1,943
2.5K-2A	2.5K3SWE	\$ 1,903
2.5K-4A	2.5K4SWE	\$ 1,916
2.5KH-4A	2.5KH4SWE	\$ 2,654

Pump Model Reference	Kit P/N	Liquid End List Price
2.5KH1-4A	2.5KH4SWE2	\$ 2,654
3G-2A	3G3SWE	\$ 1,823
3G-4A	3G4SWE	\$ 1,855
3K-2A	3K3SWE	\$ 2,094
3K-4A	3K4SWE	\$ 2,227
3KH-4A	3KH4SWE	\$ 3,653
3KH1-4A	3KH4SWE2	\$ 3,653
4G-2A	4G3SWE	\$ 2,219
4G-4A	4G4SWE	\$ 2,344
4G1-4A	4G4SWE2	\$ 2,504
4GL-2A	4GL3SWE	\$ 2,504
4GL-4A	4GL4SWE	\$ 2,535
4K-4A	4K4SWE	\$ 2,438
4KL-4A	4KL4SWE	\$ 2,670
5G-4A	5G4SWE	\$ 3,007
6G-4A	6G4SWE	\$ 3,416
6K-4A	6K4SWE	\$ 4,608

**Liquid ends contain the following components:**

Cast iron casing, bronze impeller, case gasket, bronze case wear ring, and neoprene deflector, spacer sleeve, ball valve, copper tubing, hardware - **Pump multiplier applies to liquid ends**

Bearing Frame			
Part Number	Size	List Price	Seal Size
2BA-67F	2A	\$ 882	1.25"
4BA-67F	4A	\$ 1,765	1.75"

Bearing frame assembly has a cast iron frame, steel shaft, bronze shaft sleeve and neoprene deflector.  
Use your standard pump multiplier

Mechanical Seal Required		Bearing Frame Size
Seal P/N	Seal Size	
Q26-395-Yxx	1.25"	2A
Q26-217-Yxx	1.75"	4A

Mechanical seals would be added from distributor's stock - use parts pricing and discount multiplier of .60

Yxx =

Choose the required choices below to finish the seal PN that is required, ie:

Q26-395-Y25 is the finished PN for a Viton/Carbon/Ceramic seal - Use parts price pages or CP&S Connect for all parts pricing

Y2 - B/C/CE	Buna	Carbon	Stainless Steel	Ceramic
Y34 - B/C/NR	Buna	Carbon	Stainless Steel	Ni-Resist
Y6 - V/C/NR	Viton	Carbon	Stainless Steel	Ni-Resist
Y25 - V/C/CE	Viton	Carbon	Stainless Steel	Ceramic
Y10 - B/C/TC	Buna	Carbon	Stainless Steel	Tungsten Carbide
Y17 - V/C/TC	Viton	Carbon	Stainless Steel	Tungsten Carbide