

Take Control of Your Maintenance Operations

# Integrations

 ServusConnect

www.servusconnect.com  
connect@servusconnect.com

We get it, you've got a lot invested in your Property Management Software (PMS) and need to use it to its fullest potential. Unfortunately, when it comes to Maintenance Operations, it's likely your PMS comes up short!

## FEATURED INTEGRATIONS

### Single-Source of Truth

We're big believers that your PMS should be the single source of truth for your company. That is why we build all of our PMS integrations with the mindset that we're not replacing them, we just making them better!



### Service Request Creation

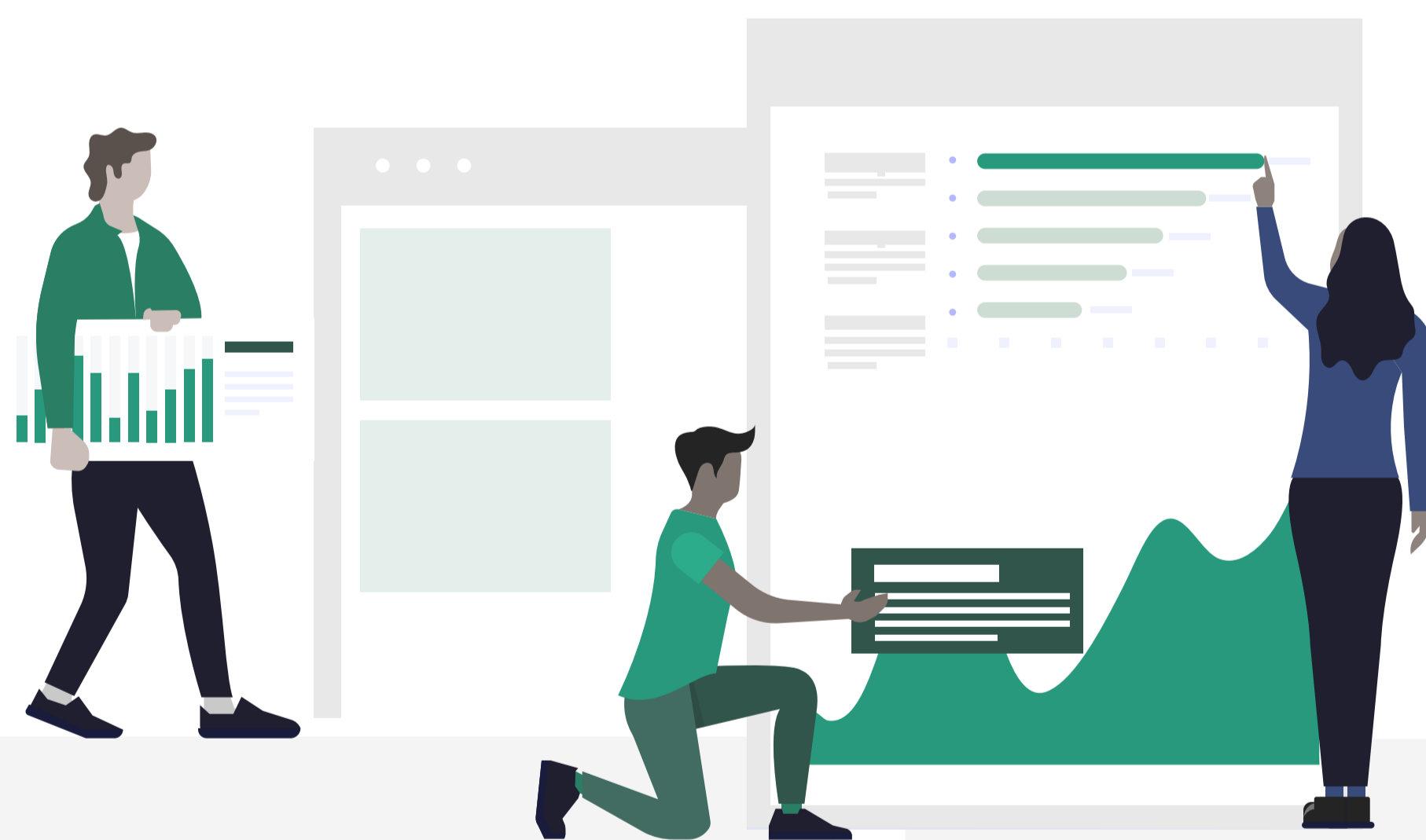
With ServusConnect's innovative approach to PMS integrations, there is no need to re-train residents or team members on where to create service requests (SRs). ServusConnect intelligently monitors all vectors of SR creation and synchronizes with your PMS behind the scenes, keeping it updated throughout the workflow.

“This integration has lifted our stress. We've been able to get rid of other systems, save money, and have everything in a centralized location.”

- VP of Operations (Yardi User)

### Unit Details & Status

There is a lot of useful data buried in your PMS that is helpful in Maintenance-Ops. ServusConnect monitors changes in unit status to power make-ready activities. Other helpful context, like square-footage, floorplans, amenities & layouts is also automatically synchronized.



### Resident Information

ServusConnect uses existing resident information stored in your PMS to power service notifications, surveys & messages, eliminating the need to curate your Resident's contact info in more than one spot!

### Automated Close-Outs

A huge timesaver for property teams, ServusConnect automatically closes the service request record in the PMS, adding notes, timestamps, comments - even a link to where the SR lives in ServusConnect.

### And much more...

Did you know a typical PMS integration for ServusConnect requires over a dozen API's? It's seamless and happens behind the scenes with little to no configuration required from our clients!