



# Organizational Chart

Equipment, Service, Parts, Controls,  
Balancing, and System Solutions for your  
HVAC applications

2020

As a leading provider of specialty commercial and industrial HVAC equipment, controls, and services, Energy Transfer Solutions, LLC works daily to provide unparalleled technical products and services by representing manufacturers who share our commitment to exceeding our customers' expectations. Located in West Chester, PA, ETS services customers throughout the tri-state area.

# OVERVIEW

## WHY ETS...

*Continually meeting and exceeding our customers expectations.*

1. *Leading Provider of HVAC Equipment, Parts, Balancing, Controls, and Service*
2. *Single source accountability*
3. *Combined 200 years experience*
4. *Servicing PA, NJ, & DE*
5. *Commitment to customer satisfaction*

# EXECUTIVE TEAM



**TODD GOODSTEIN**  
CEO  
TODDG@ETSHVAC.COM



**MIKE HAGGARTY, JR.**  
PRESIDENT  
MIKEH@ETSHVAC.COM



**PETE WOLF**  
VICE PRESIDENT, SALES  
PETEW@ETSHVAC.COM



**SHAWN DOHERTY**  
VICE PRESIDENT, OPERATIONS  
SHAWND@ETSHVAC.COM



**AMY MCCOY**  
VICE PRESIDENT, FINANCE  
AMYM@ETSHVAC.COM

**Established in June 2003 primarily as an equipment manufacturer representative, ETS has built upon these valued relationships to allow our clients to partner and utilize us as their HVAC solutions specialists.**

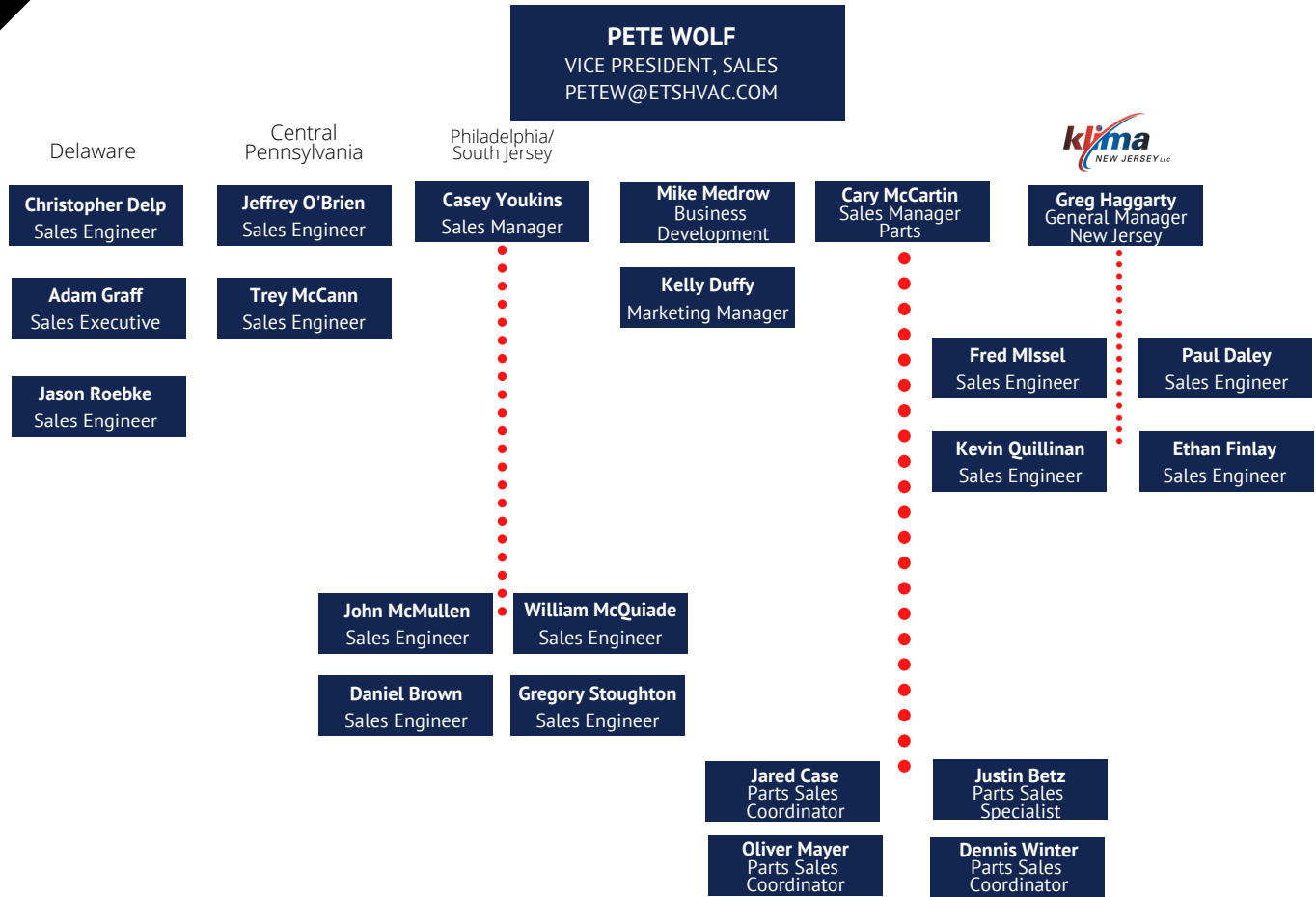
## VISION

*Through a commitment to shared values of honesty, integrity, respect, personal and professional growth, and mutual financial enrichment, ETS will be our customers' trusted partner while firmly advocating their best interests.*

## MISSION

*ETS is an HVAC sales and service organization providing premier products, innovative turn-key solutions, and uncompromising quality which will contribute to our customers' success and profitability.*

# Sales



## ETS OFFERS CAPABILITIES IN EQUIPMENT & PARTS SALES

Supplier of commercial and industrial HVAC products and parts manufactured for standard and specialty applications such as office, educational, healthcare, manufacturing, and critical environments





## SHAWN DOHERTY

VICE PRESIDENT, OPERATIONS  
SHAWNDO@ETSHVAC.COM

**Timothy Moss**  
Program Manager  
Mr. Goodtower

**Rob Deferdinando**  
Service Sales  
Associate

**Jeffrey Collins**  
HVAC Service  
Manager

**Charlene Chandler**  
Service Sales  
Associate

**Celeste Dwyer**  
Service Coordinator

VRF  
**Bruce Leibig**  
VFR Solutions  
Manager

**Cory Girtton**  
Mr. Goodtower  
Mechanic

**David Jarrell**  
Sr. Service Tech

**Shawn Hatton**  
Sr. Service Tech

**Jim Crowley**  
VFR Solutions  
Manager

**Brian Westcott**  
Sr. Service Tech

**Justin McEwing**  
Service Technician

**Ronald Engle**  
Service Technician

**Brendan Kennedy**  
Service Technician

**Eric Letts**  
Service Technician

**Kevin Kelly**  
Service Intern

**Johnathan Baul**  
Service Technician

**Katherine Pappas**  
Service Scheduler

**Danny Wooten**  
Service Technician

# SERVICE

## FIELD SERVICE

Provider of field technician services ranging from equipment start-up to preventative maintenance programs. Specialty services include refrigeration piping design and installation, cooling tower retrofit, and mechanical systems commissioning.

**AIR CONDITIONING / COOLING TOWERS / CHILLERS / CUSTOM AIR  
HANDLING / AUTOMATIC TEMPERATURE CONTROLS / LABORATORY  
CONTROLS**

**SHAWN DOHERTY**  
VICE PRESIDENT, OPERATIONS  
SHAWNDO@ETSHVAC.COM

## BALANCING

**Michael Warner**  
Certified Balancing  
Professional

**Sam Rovine**  
Balancing Application  
Specialist

**Casey Kennady**  
Certified Balancing  
Technician

**Kevin Kerrigan**  
Balancing  
Technician

**Jared McGill**  
Balancing  
Technician

**Dave Loughheed**  
Balancing  
Technician

## CONTROLS

**Paul Waxman**  
Controls  
Specialist

**Brian Chlan**  
Controls  
Engineer

# BALANCING & CONTROLS

**Controls:** Energy Transfer Solutions is a certified Honeywell Automation & Controls Solutions (ACS) provider. The ETS controls department engineers and designs complete Building Automation Systems.

On average, HVAC operation accounts for nearly half of a commercial facility's energy consumption. Having the proper HVAC controls system in place can generate significant energy and cost savings for building owners. More importantly, HVAC control is responsible for the comfort and health of a building's occupants as it provides temperature control, fresh air circulation, and filtration. We maximize energy efficiency, comfort, and facility management for customers of all sizes with scalable building automation systems and connectivity solutions.

**Balancing:** Building owners and tenants should be concerned that the environmental performance of their buildings be optimal while the operating cost should be minimal. These goals can only be accomplished when a building's HVAC and hydronic systems are properly balanced. Three major steps used to achieve the proper operation of the HVAC and hydronic systems and a desirable climate are Testing, Adjusting, and Balancing (TAB).

Energy Transfer Solutions, LLC is proud to be National Environmental Balancing Bureau (NEBB) Certified in Testing, Adjusting, and Balancing of Environmental Systems. Established in 1971, NEBB is the premier international certification association for firms that deliver high-performance building systems.

# Inside Applications & Finance Department

REPORT TO MICHAEL HAGGARTY, PRESIDENT

## Estimating      Inside Applications      Finance

**JORDAN BELLAMO**  
ESTIMATING MANAGER

**Nicolas Fresconi**  
Application  
Engineer

**JUDY FAN**  
APPLICATIONS MANAGER

**Jacob Biggs**  
Application  
Engineer

**Benjamin Lopresti**  
Application  
Engineer

**Daniel Eichner**  
Application  
Engineer

**AMY MCCOY**  
VICE PRESIDENT, FINANCE  
AMYM@ETSHVAC.COM

**Nick Evangelista**  
Staff Accountant

**Christina Crouse**  
Accounting Assistant

**Alexis Kelly**  
Staff Accountant

**Rosita Doerr**  
Sales Support  
Manager

**Karen Ballard**  
Admin Assistant

**Colleen Streeper**  
Sales Support

## OVERVIEW

Everyone today is forced to produce more due to the innovations in technology and the speed of communications. Our customers are no exception and they demand more of our time and effort. We align the efforts of our inside applications with our outside sales to enable them to work together as a customer-facing team to exceed their expectations. Our estimating team prepares the pricing and scope of commercial and industrial projects, and search for estimating opportunities for ETS. Our application engineering team provides a focused engineering support team to generate submittals, selections, and technical support for our sales team and customers.



**25+**

Manufacturers

**200**

Years combined  
experience

**60+**

Employees